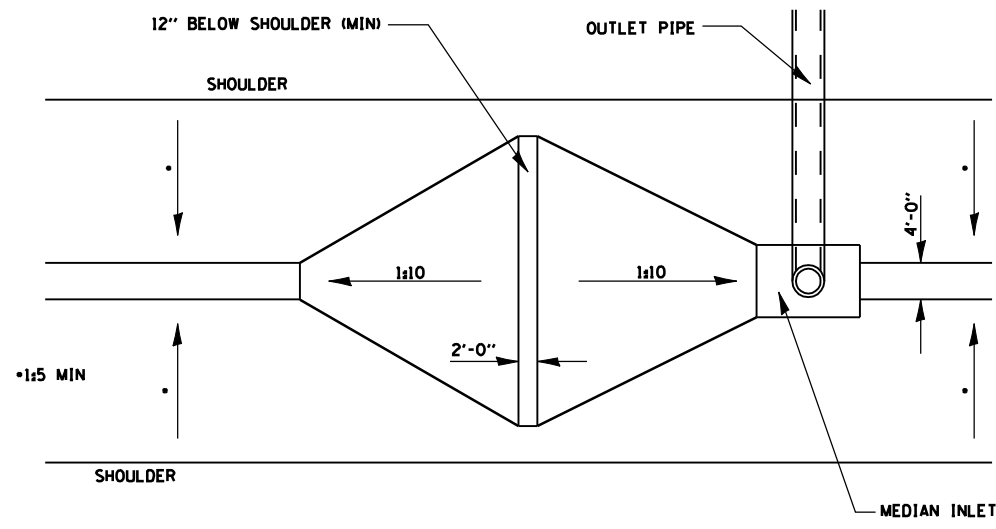
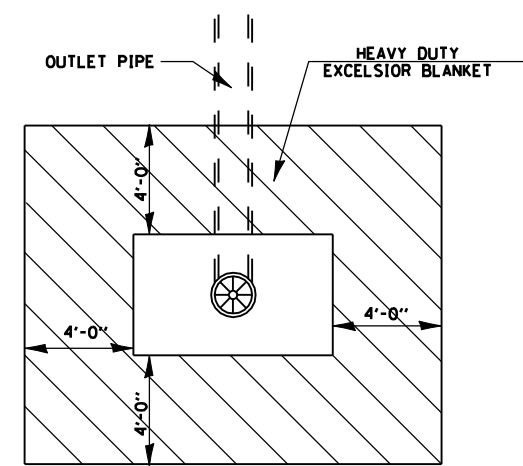


F.A.P. RTE.	SECTION	COUNTY	TOTAL SHEETS	SHEET NO.
315	34-4	HANCOCK	452	275
FED. ROAD DIST. NO.		ILLINOIS	FED. AID PROJECT	
D-98-591-02				

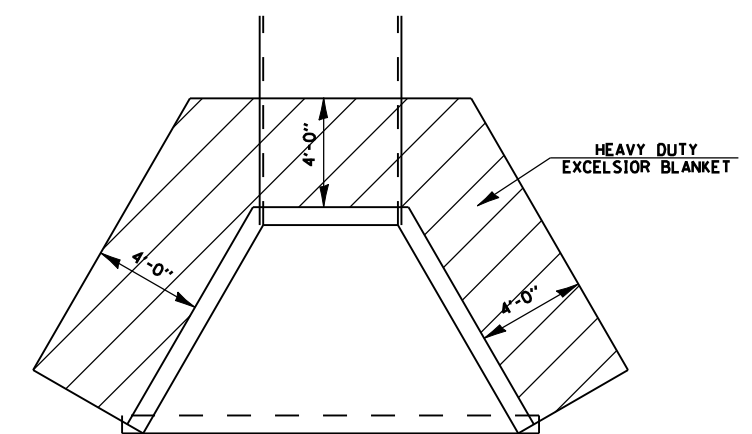
**CONTRACT NO. 72680**



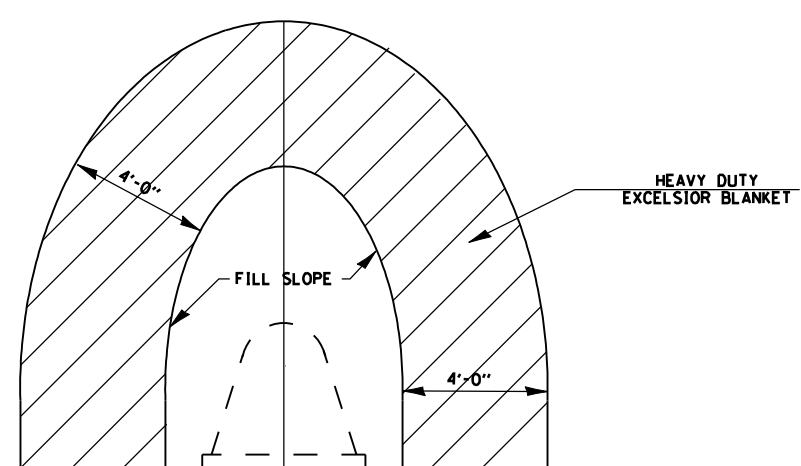
EARTH DITCH CHECK @ MEDIAN INLET



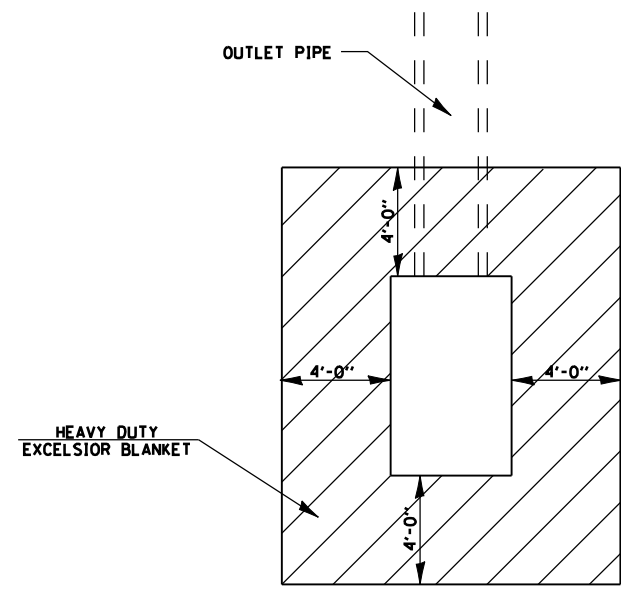
HEAVY DUTY EXCELSIOR BLANKET AROUND MEDIAN INLETS STD 604101 & STD 604106



HEAVY DUTY EXCELSIOR BLANKET AROUND HEADWALLS & CULVERT WINGWALLS



HEAVY DUTY EXCELSIOR BLANKET AROUND FLARED END SECTION STD 542301



HEAVY DUTY EXCELSIOR BLANKET AROUND HEADWALL FOR PIPE UNDERDRAIN STD 601101

REVISIONS	
NAME	DATE

ILLINOIS DEPARTMENT OF TRANSPORTATION

**FAP ROUTE 315  
SPECIAL DETAILS  
EXCELSIOR BLANKET  
EARTH DITCH CHECK**

DATE 1/31/06  
DRAWN BY JCG  
CHECKED BY JRB