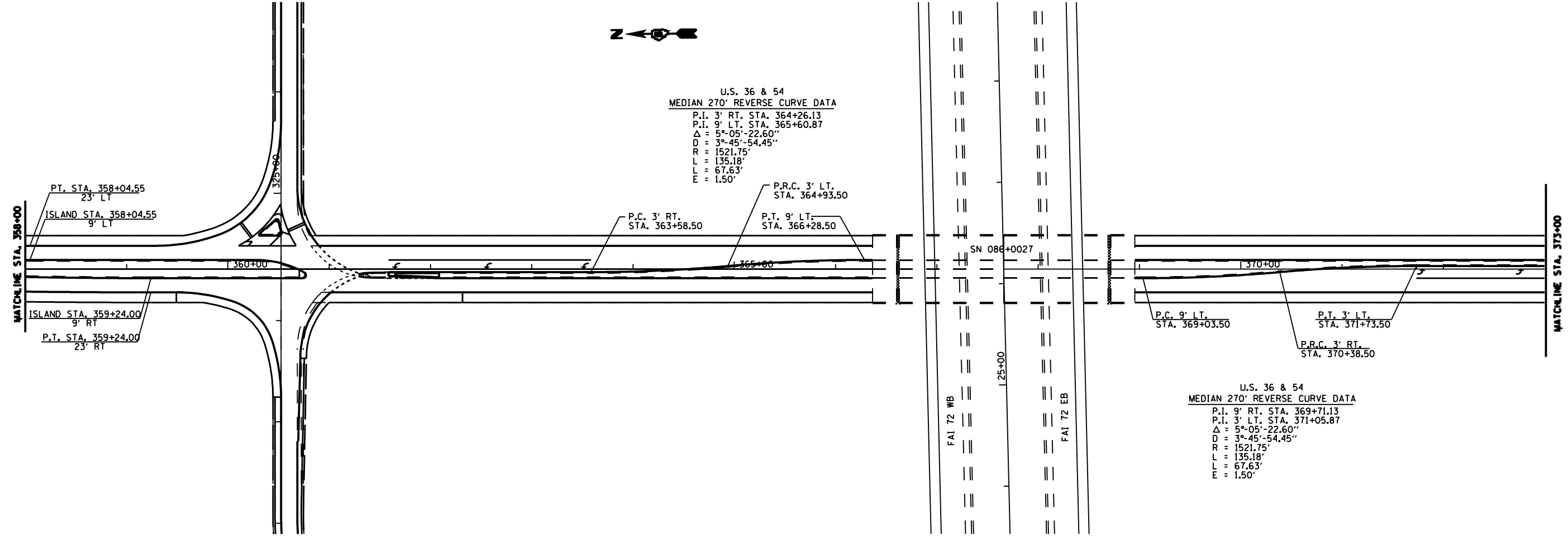


F.A. RTE.	SECTION	COUNTY	TOTAL SHEETS	SHEET NO.
72	186-10RS-2	SCOTT	52	37
STA.		TO STA.		
FED. ROAD DIST. NO.	ILLINOIS	FED. AID PROJECT		



U.S. 36 & 54
 MEDIAN 270' REVERSE CURVE DATA
 P.I. 3' RT. STA. 364+26.13
 P.I. 9' LT. STA. 365+60.87
 $\Delta = 5^{\circ}-05'-22.60''$
 $D = 3^{\circ}-45'-54.45''$
 $R = 1521.75'$
 $L = 135.18'$
 $E = 67.63'$



U.S. 36 & 54
 MEDIAN 270' REVERSE CURVE DATA
 P.I. 9' RT. STA. 369+71.13
 P.I. 3' LT. STA. 371+05.87
 $\Delta = 5^{\circ}-05'-22.60''$
 $D = 3^{\circ}-45'-54.45''$
 $R = 1521.75'$
 $L = 135.18'$
 $E = 67.63'$

REVISIONS	
NAME	DATE

ILLINOIS DEPARTMENT OF TRANSPORTATION
 PLAN
 FAI 72
 SECTION 186-10RS-2
 SCOTT COUNTY
 SCALE: VERT. NOT TO SCALE
 HORIZ. DATE: FEBRUARY 18, 2003
 DRAWN BY JJB
 CHECKED BY VJM