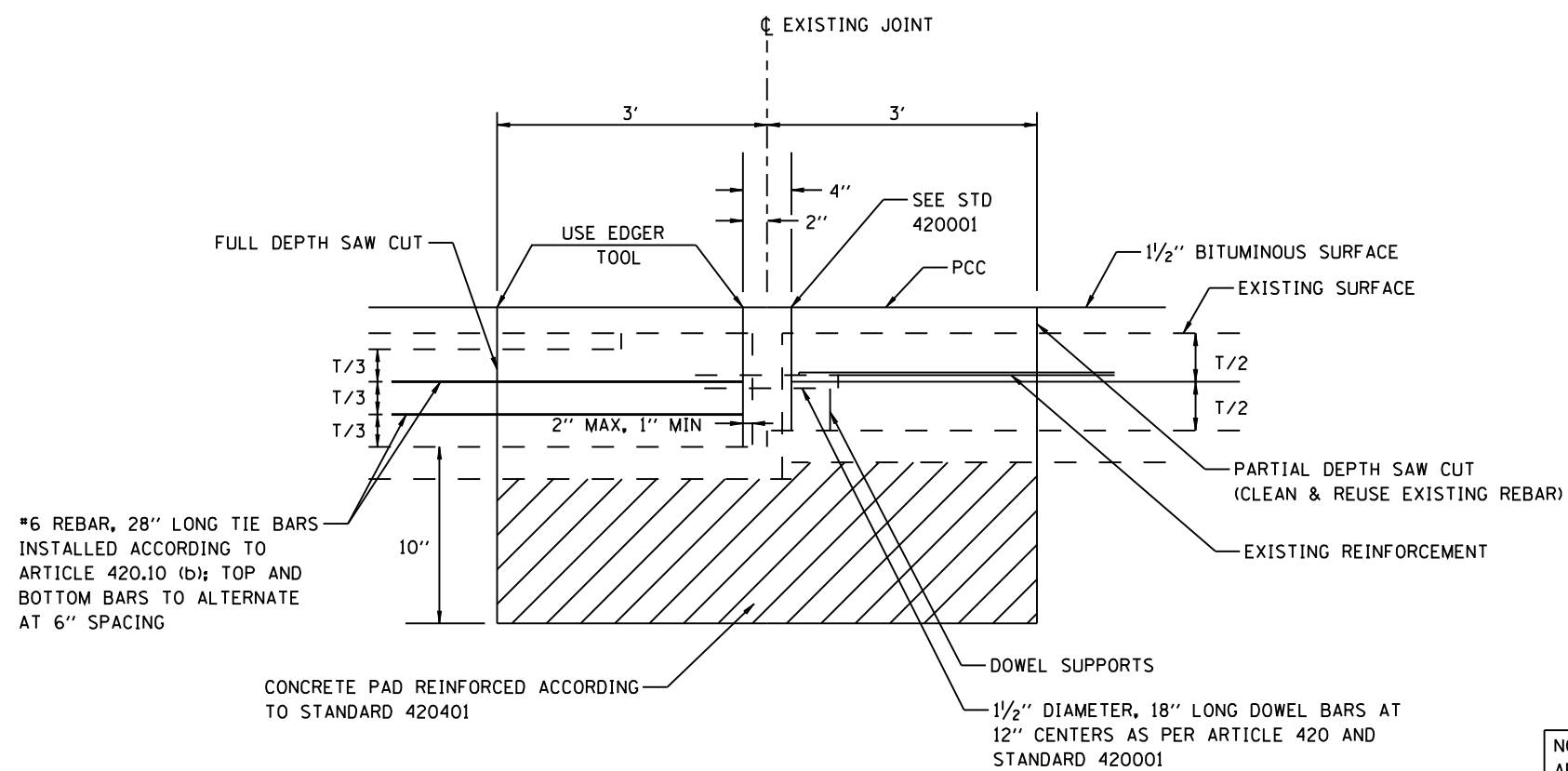


F.A.I. RTE.	SECTION	COUNTY	TOTAL SHEETS	SHEET NO.
72	186-10RS-2	SCOTT	52	46
STA.		TO STA.		
FED. ROAD DIST. NO.	ILLINOIS	FED. AID PROJECT		



NOTE: THIS JOINT SHALL BE INSTALLED AFTER MAINLINE RESURFACING IS COMPLETE TO AVOID UNNECESSARY BUMPS

REVISIONS		ILLINOIS DEPARTMENT OF TRANSPORTATION
NAME	DATE	
		EXPANSION JOINT DETAILS

FAI 72  
 SECTION 186-10RS-2  
 SCOTT COUNTY

VERT. SCALE: NOT TO SCALE  
 HORIZ. SCALE: NOT TO SCALE  
 DATE: FEBRUARY 26, 2003

DRAWN BY: JJB  
 CHECKED BY: VJM