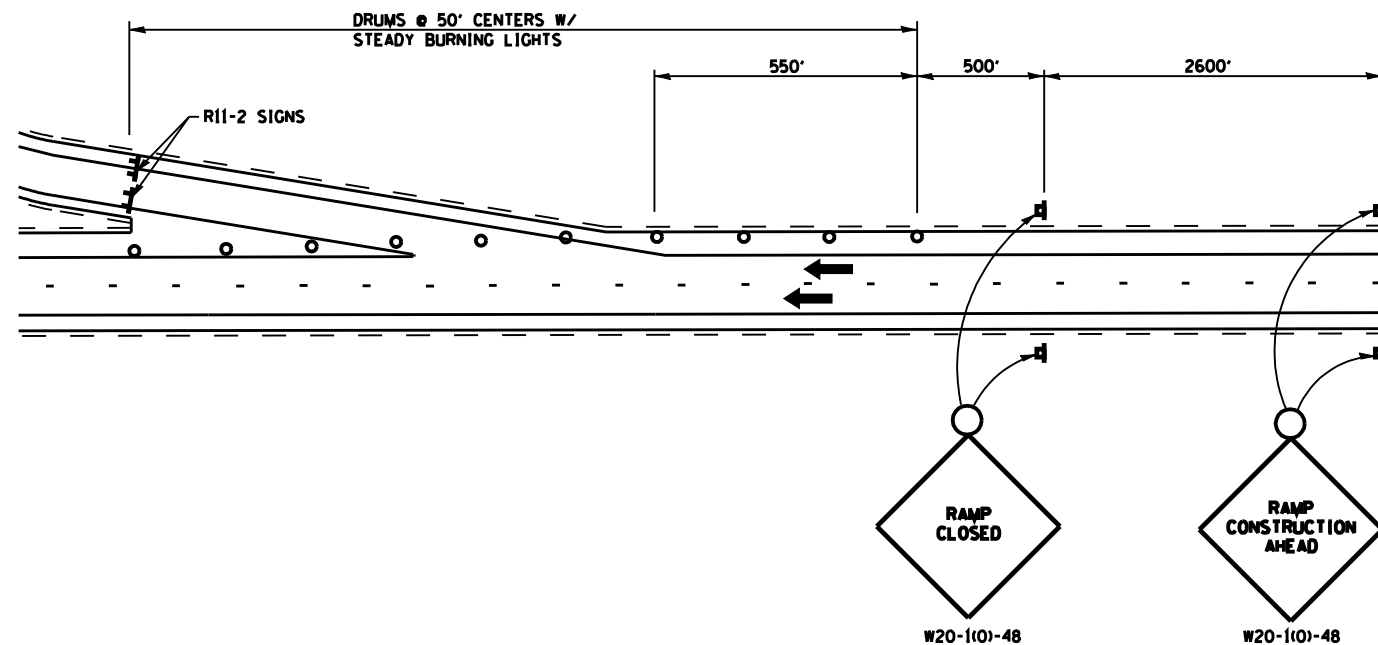
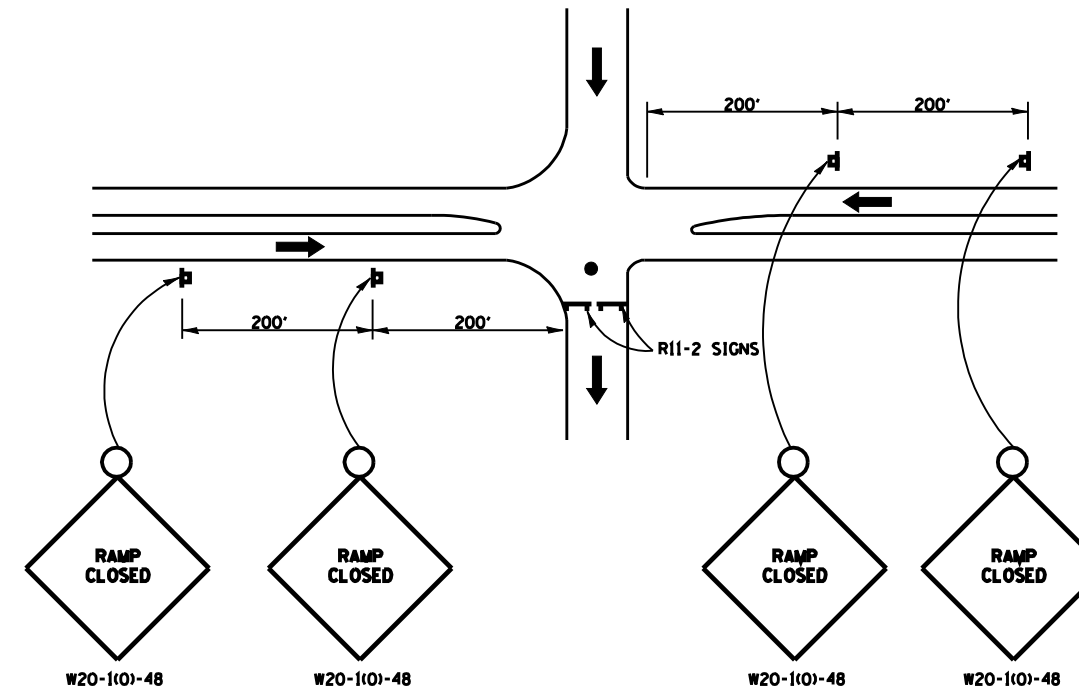


F.A.I. RTE.	SECTION	COUNTY	TOTAL SHEETS	SHEET NO.
55		MONTGOMERY	52	52
FED. ROAD DIST. NO. ILLINOIS FED. AID PROJECT				
D 6 RESURFACING 2002-3				



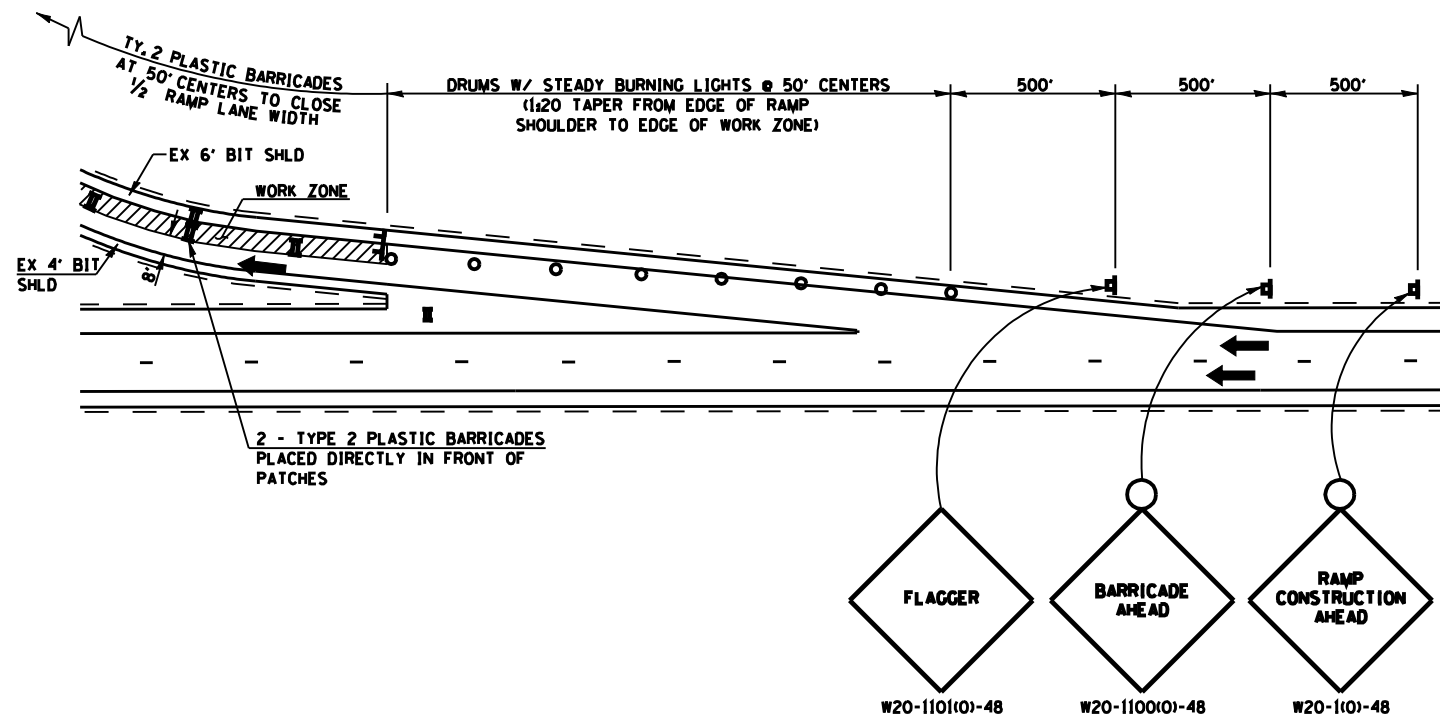
**EXIT RAMP CLOSURE DETAIL**

USE FOR MILLING AND BITUMINOUS RESURFACING OPERATIONS



**ENTRANCE RAMP CLOSURE DETAIL**

USE FOR MILLING AND BITUMINOUS RESURFACING OPERATIONS



**TRAFFIC CONTROL PLAN**

USE FOR PATCHING OPERATIONS

- SYMBOLS**
- ▣ SIGN ON PORTABLE OR PERMANENT SUPPORT
  - ⚡ TYPE 3 BARRICADE WITH TWO FLASHING AMBER LIGHTS AND ROAD CLOSURE SIGN
  - DRUM WITH STEADY BURNING LIGHT
  - FLAGGER WITH TRAFFIC CONTROL SIGN
  - ➔ TRAFFIC FLOW
  - ▤ TYPE 2 PLASTIC BARRICADE

ILLINOIS DEPARTMENT OF TRANSPORTATION

**TRAFFIC CONTROL & PROTECTION FOR RAMPS**

FAI 55 (1-55)  
D 6 RESURFACING 2002-3  
MONTGOMERY COUNTY