

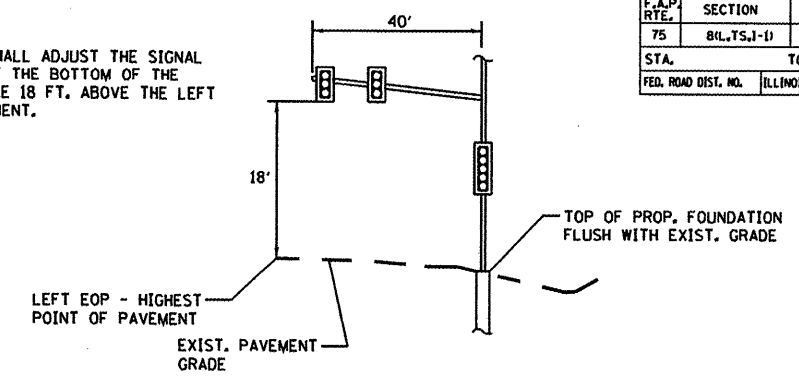
F.A.P. RTE.	SECTION	COUNTY	TOTAL SHEETS	SHEET NO.
75	81L,TS,I-II	SANGAMON	29	16
STA.		TO STA.		
FED. ROAD DIST. NO.		ILLINOIS FED. AID PROJECT		

TRAFFIC SIGNAL QUANTITIES

LOCATION: IL 29 & HILLTOP DRIVE

QUANTITY	UNIT	ITEM
10.0	50 FT	SIGN PANEL, TYPE I
22.0	50 FT	SIGN PANEL, TYPE II
1	EACH	SERVICE INSTALLATION, TYPE A
1	EACH	WOOD POLE, 25', CLASS 4
37.0	FOOT	CONDUIT IN TRENCH, 3/4" DIA., PVC
299.0	FOOT	CONDUIT IN TRENCH, 1 1/2" DIA., PVC
509.0	FOOT	CONDUIT IN TRENCH, 2" DIA., PVC
3.0	FOOT	CONDUIT IN TRENCH, 2 1/2" DIA., PVC
55.0	FOOT	CONDUIT IN TRENCH, 3" DIA., PVC
8.0	FOOT	CONDUIT IN TRENCH, 4" DIA., PVC
98.0	FOOT	CONDUIT, AUGERED 1 1/2" DIA., PVC
68.0	FOOT	CONDUIT, AUGERED 2 1/2" DIA., PVC
151.0	FOOT	CONDUIT, AUGERED 3" DIA., PVC
3	EACH	JUNCTION BOX (SPECIAL)
4	EACH	HANDHOLE
1	EACH	DOUBLE HANDHOLE
911.0	FOOT	TRENCH AND BACKFILL FOR ELECTRICAL WORK
2	EACH	LUMINAIRE, SODIUM VAPOR, HORIZONTAL MOUNT, PHOTO-CELL CONTROL, 250 WATT
1	EACH	FULL-ACTUATED CONTROLLER AND TYPE V CABINET

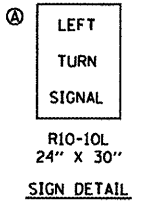
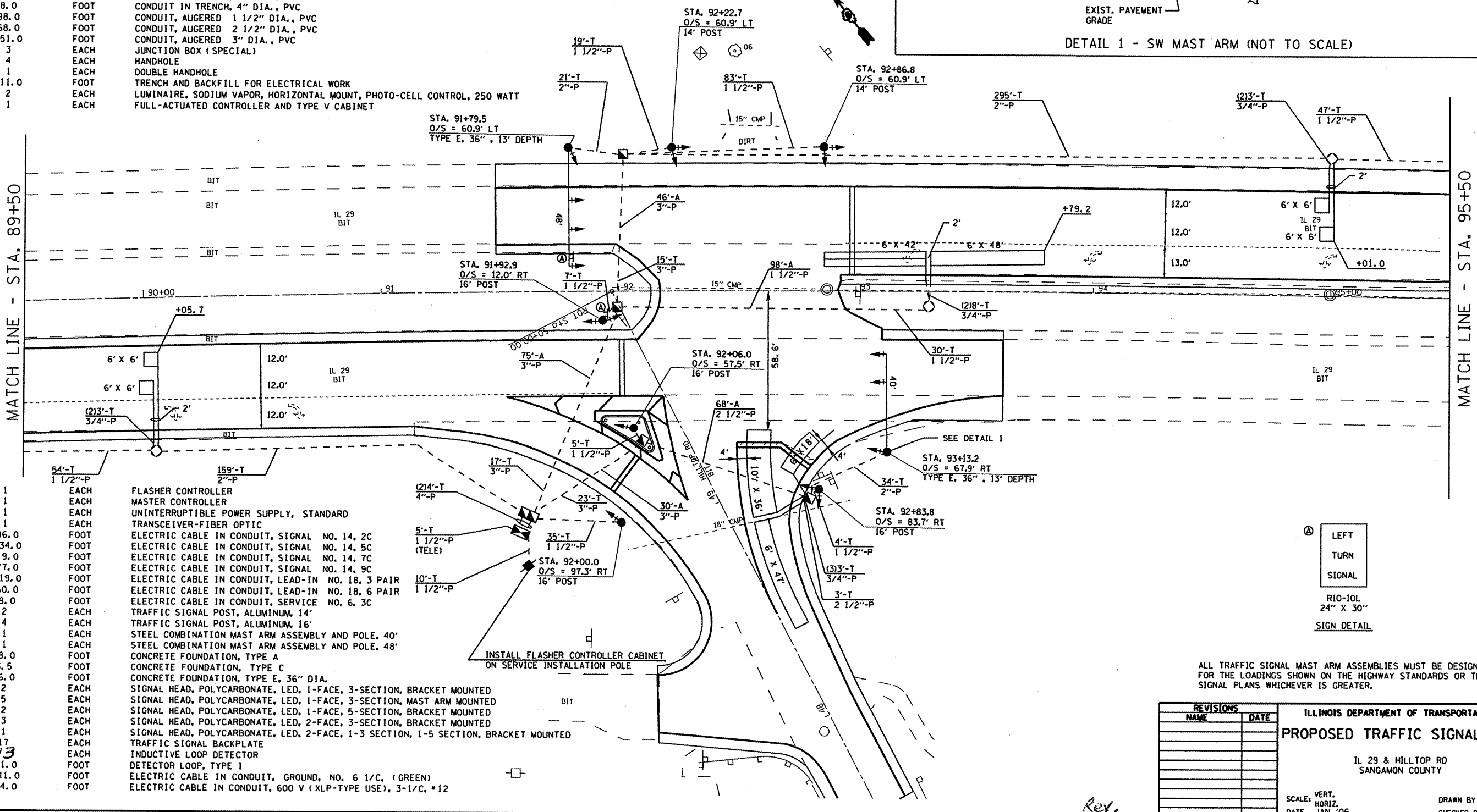
CONTRACTOR SHALL ADJUST THE SIGNAL HEADS SO THAT THE BOTTOM OF THE BACKPLATES ARE 18 FT. ABOVE THE LEFT EDGE OF PAVEMENT.



DETAIL 1 - SW MAST ARM (NOT TO SCALE)

MATCH LINE - STA. 89+50

MATCH LINE - STA. 95+50



ALL TRAFFIC SIGNAL MAST ARM ASSEMBLIES MUST BE DESIGNED FOR THE LOADINGS SHOWN ON THE HIGHWAY STANDARDS OR THESE SIGNAL PLANS WHICHEVER IS GREATER.

REVISIONS	
NAME	DATE

ILLINOIS DEPARTMENT OF TRANSPORTATION
PROPOSED TRAFFIC SIGNAL PLAN
 IL 29 & HILLTOP RD
 SANGAMON COUNTY
 SCALE: VERT. _____
 HORIZ. _____
 DATE JAN '06
 DRAWN BY KDA
 CHECKED BY _____

PLOT DATE = 2/10/06
 FILE NAME = 41VCS\pct\72A20\ts\ts_06.dwg
 PLOT SCALE = 42.35317 IN.
 USER NAME = krcabonne

Rev.