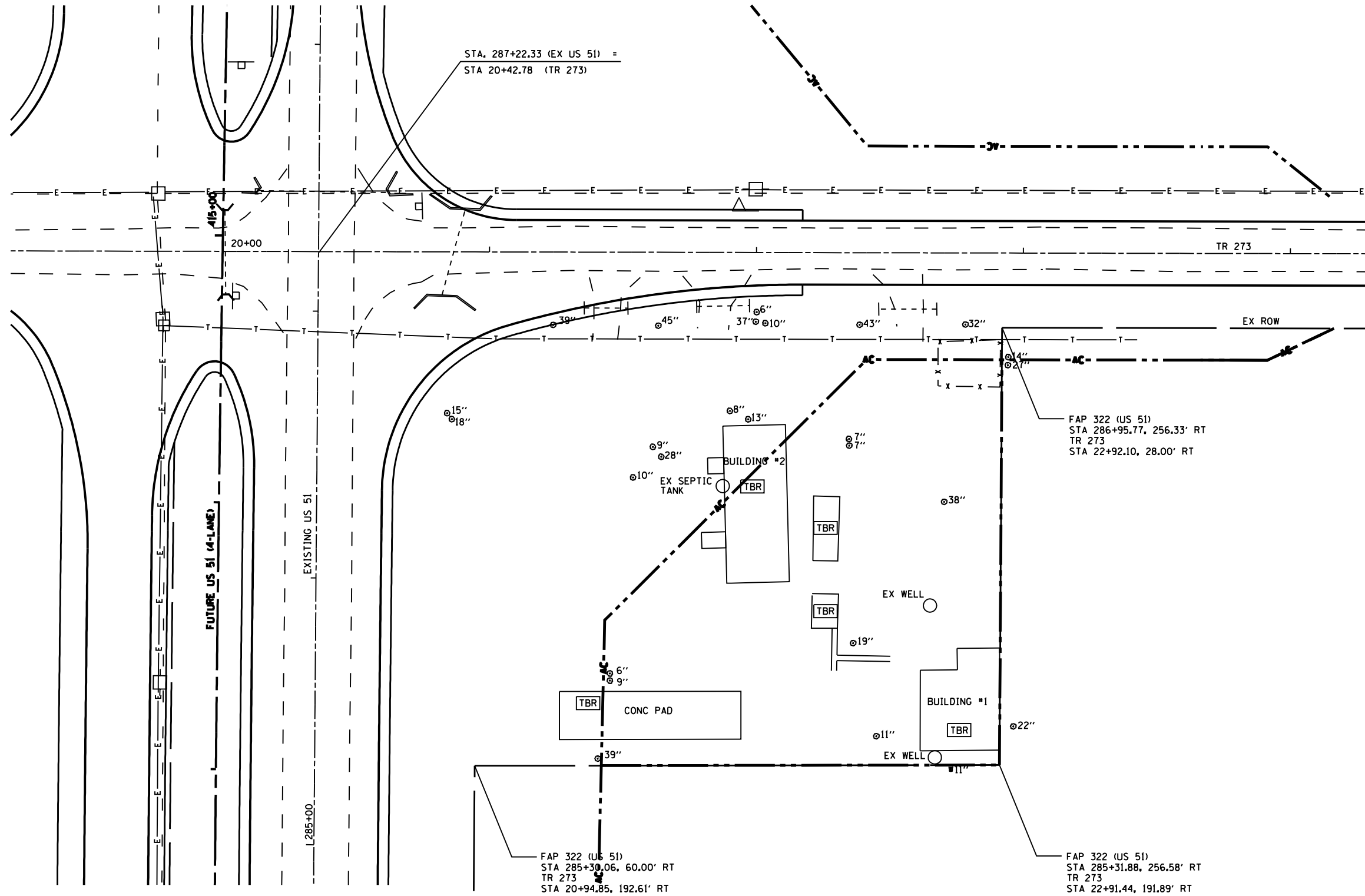


F.A.P. RTE.	SECTION	COUNTY	TOTAL SHEETS	SHEET NO.
322	.	CHRISTIAN	8	8
STA.	TO STA.			
FED. ROAD DIST. NO.	ILLINOIS	FED. AID PROJECT		
• D-6 BUILDING DEMOLITION 2006				



FOR INFORMATION ONLY

REVISIONS	
NAME	DATE

ILLINOIS DEPARTMENT OF TRANSPORTATION
 FUTURE FOUR LANE PLAN SHEET
 FAP 322 (US 51)
 D-6 BUILDING DEMOLITION 2006
 CHRISTIAN COUNTY

SCALE: VERT. DRAWN BY
 HORIZ. CHECKED BY
 DATE

PLT DATE: 12/18/2006
 FILE NAME: c:\p\proj\10-06-08\10-06-08\10-06-08.dgn
 PLT SCALE: 1/4" = 1'-0"
 USER NAME: laughlin