

F.A.P. RTE.	SECTION	COUNTY	TOTAL SHEETS	SHEET NO.
322		CHRISTIAN	8	1

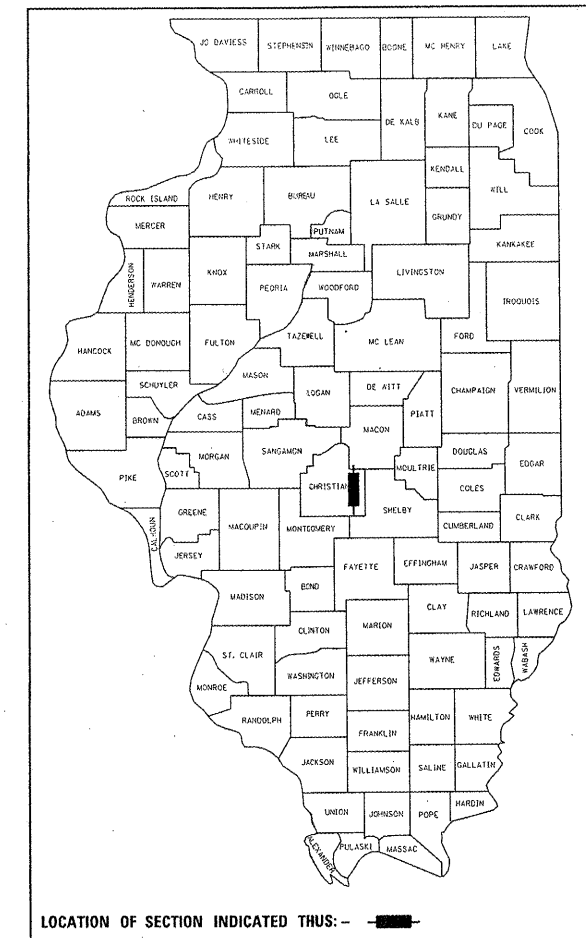
D6 BUILDING DEMOLITION 2006

STATE OF ILLINOIS  
DEPARTMENT OF TRANSPORTATION  
DIVISION OF HIGHWAYS

# PROPOSED HIGHWAY PLANS

FAP ROUTE 322 (US 51)  
SECTION D6 BUILDING DEMOLITION 2006  
PROJECT  
CHRISTIAN COUNTY  
C-96-520-06

D-96-507-06



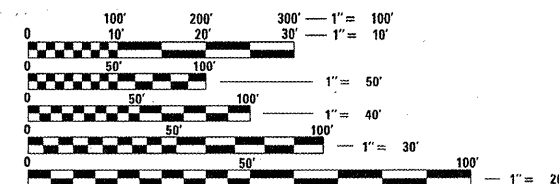
LOCATION OF SECTION INDICATED THUS: - ■ -

INDEX OF SHEETS

1. COVER SHEET
2. GENERAL NOTES
3. SUMMARY OF QUANTITIES
4. FLOOR PLAN / MATERIAL TABLE BUILDING #1
5. FLOOR PLAN / MATERIAL TABLE BUILDING #2
6. PLAN SHEET
7. SEEDING PLAN SHEET
8. FUTURE FOUR LANE PLAN SHEET

HIGHWAY STANDARDS

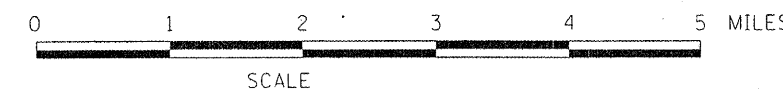
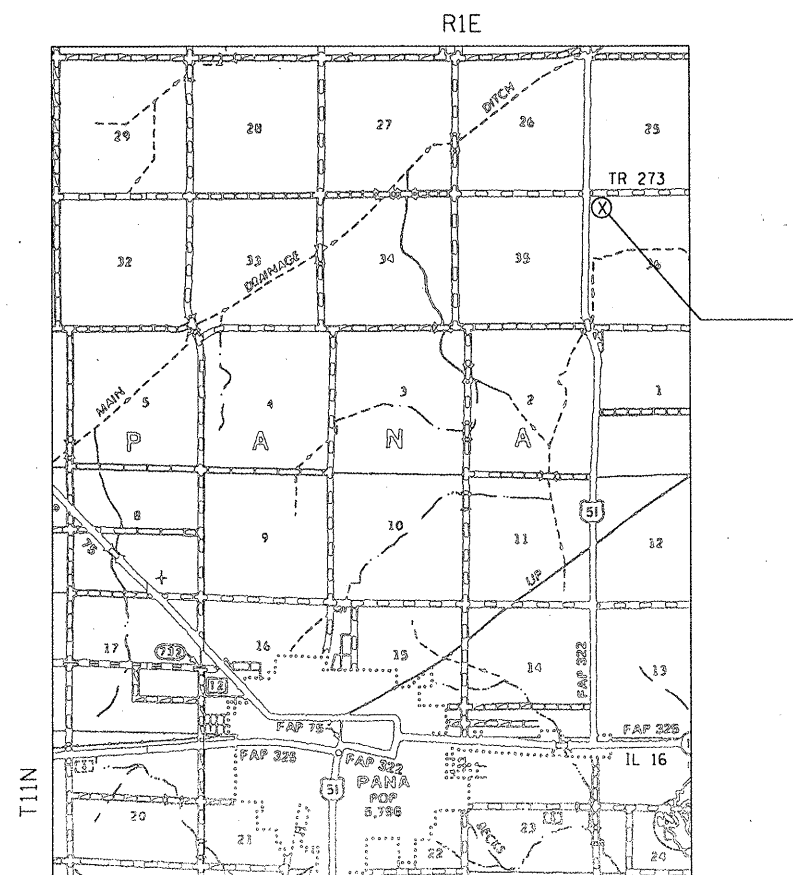
- 701001-01
- 701006-02
- 702001-06
- 000001-04



FULL SIZE PLANS HAVE BEEN PREPARED USING STANDARD ENGINEERING SCALES. REDUCED SIZED PLANS WILL NOT CONFORM TO STANDARD SCALES. IN MAKING MEASUREMENTS ON REDUCED PLANS, THE ABOVE SCALES MAY BE USED.

J.U.L.I.E.  
JOINT UTILITY LOCATION INFORMATION FOR EXCAVATION  
1-800-892-0123

CONTRACT NO. 72A22



PROJECT ENGINEER: SAL MADONIA (217) 782-4761  
SQUAD LEADER: JEFFREY P. MYERS (217) 524-7940

CHRISTIAN COUNTY

SECTION D6 BUILDING DEMOLITION 2006

STATE OF ILLINOIS  
DEPARTMENT OF TRANSPORTATION  
DIVISION OF HIGHWAYS

SUBMITTED FEBRUARY 15, 2006  
*Chris M. Reed*  
DEPUTY DIRECTOR OF HIGHWAYS, REGION ENGINEER

MARCH 24, 2006  
*Mike Nunez*  
ENGINEER OF DESIGN AND ENVIRONMENT

MARCH 24, 2006  
*Milton R. Sees, P.E.*  
DIRECTOR OF HIGHWAYS, CHIEF ENGINEER

PRINTED BY THE AUTHORITY  
OF THE STATE OF ILLINOIS



CONTRACT NO. 72A22

F.A.P. RTE.	SECTION	COUNTY	TOTAL SHEETS	SHEET NO.
322	*	CHRISTIAN	8	3
STA.		TO STA.		
FED. ROAD DIST. NO.	ILLINOIS FED. AID PROJECT			
* D-6 BUILDING DEMOLITION 2006				

## ILLINOIS DEPARTMENT OF TRANSPORTATION SUMMARY OF QUANTITIES

LOCATION OF WORK

100% STATE

SUMMARY OF QUANTITIES				CONSTRUCTION TYPE CODE
CODE NO.	ITEM	UNIT	TOTAL QUANTITY	Y004
25000200	SEEDING, CLASS 2	ACRE	0.6	0.6
25000400	NITROGEN FERTILIZER NUTRIENT	POUND	54	54
25000500	PHOSPHORUS FERTILIZER NUTRIENT	POUND	54	54
25000600	POTASSIUM FERTILIZER NUTRIENT	POUND	54	54
25100115	MULCH, METHOD 2	ACRE	0.6	0.6
67100100	MOBILIZATION	L SUM	1	1
70103700	TRAFFIC CONTROL COMPLETE	L SUM	1	1
Z0007601	BUILDING REMOVAL NO. 1	L SUM	1	1
Z0007602	BUILDING REMOVAL NO. 2	L SUM	1	1
Z0023800	FILLING EXISTING SEPTIC TANK	EACH	1	1
Z0049902	REMOVAL AND DISPOSAL OF NON-FRIABLE ASBESTOS, BUILDING NO. 2	L SUM	1	1
Z0064225	SEALING WATER WELLS ABANDONED	EACH	2	2

PLOT DATE \* 2/15/2006  
 FILE NAME \* crp\projects\06-507-06\ss004.dgn  
 PLOT SCALE \* 1/8"=1'-0"  
 USER NAME \* baughman1

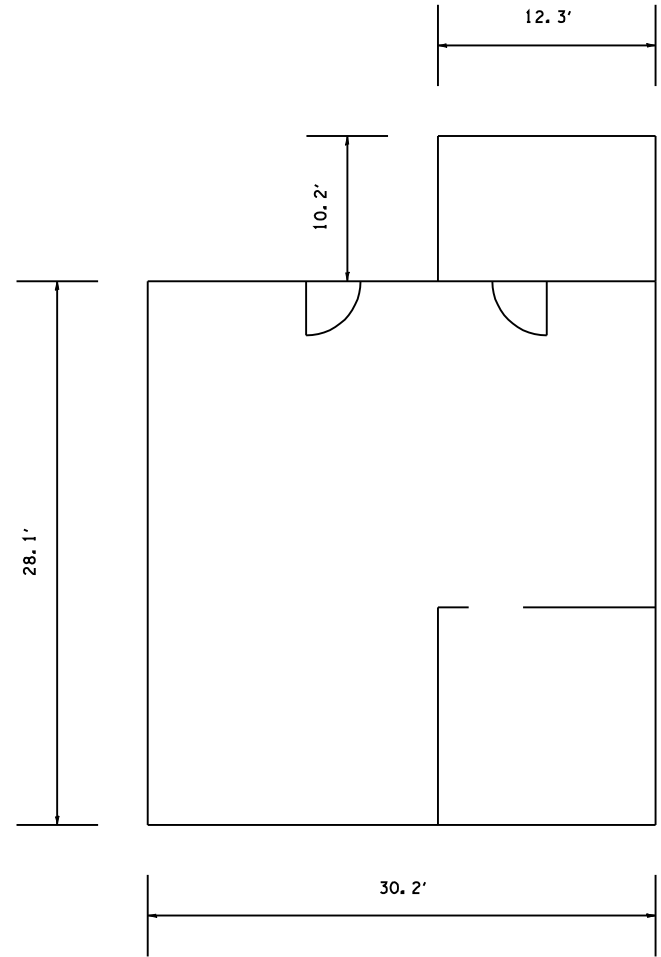
REVISIONS	
NAME	DATE

ILLINOIS DEPARTMENT OF TRANSPORTATION  
 SUMMARY OF QUANTITIES  
 FAP 322 (US-51)  
 SECTION D6 BUILDING DEMOLITION 2006  
 CHRISTIAN COUNTY

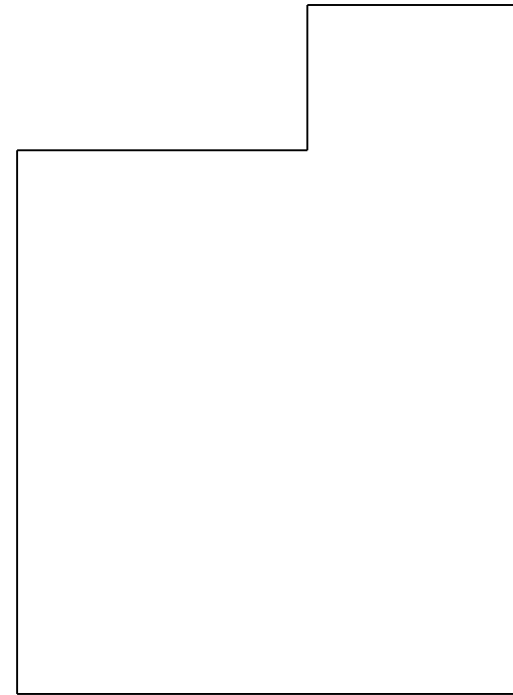
SCALE: VERT. \_\_\_\_\_  
 HORIZ. \_\_\_\_\_  
 DATE \_\_\_\_\_

DRAWN BY \_\_\_\_\_  
 CHECKED BY \_\_\_\_\_

F.A.P. RTE.	SECTION	COUNTY	TOTAL SHEETS	SHEET NO.
322	.	CHRISTIAN	8	4
STA.		TO STA.		
FED. ROAD DIST. NO.	ILLINOIS	FED. AID PROJECT		



FLOOR PLAN



ROOF PLAN

ASBESTOS - CONTAINING MATERIAL TO BE REMOVED

MATERIAL DESCRIPTION	LOCATION	FRIABLE	ASBESTOS TYPE	ASBESTOS %	QUANTITY
NONE FOUND					

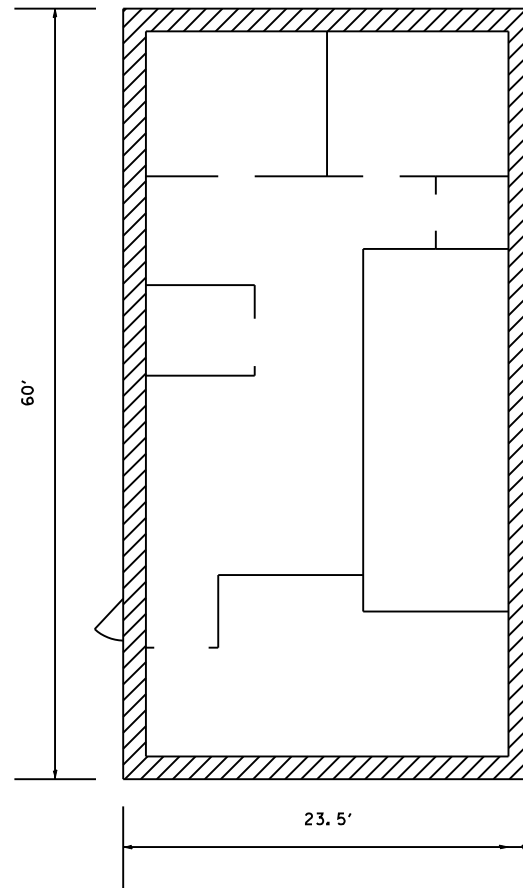
NOTE: DIMENSIONS ARE APPROXIMATE

REVISIONS	
NAME	DATE

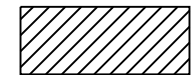
ILLINOIS DEPARTMENT OF TRANSPORTATION  
 FLOOR PLAN / MATERIAL TABLE  
 BUILDING #1  
 FAP 322 (US 51)  
 SECTION 06 BUILDING DEMOLITION 2006  
 CHRISTIAN COUNTY

SCALE: VERT. \_\_\_\_\_  
 HORIZ. \_\_\_\_\_  
 DATE \_\_\_\_\_ DRAWN BY \_\_\_\_\_  
 CHECKED BY \_\_\_\_\_

F.A.P. RTE.	SECTION	COUNTY	TOTAL SHEETS	SHEET NO.
322	.	CHRISTIAN	8	5
STA.		TO STA.		
FED. ROAD DIST. NO.	ILLINOIS	FED. AID PROJECT		



FLOOR PLAN



EXTERIOR WINDOW CAULKING

ASBESTOS - CONTAINING MATERIAL TO BE REMOVED

MATERIAL DESCRIPTION	LOCATION	FRIABLE	ASBESTOS TYPE	ASBESTOS %	QUANTITY
WINDOW CAULK	EXTERIOR WINDOWS	NO	CHRYSOTILE	3 %	70 LF

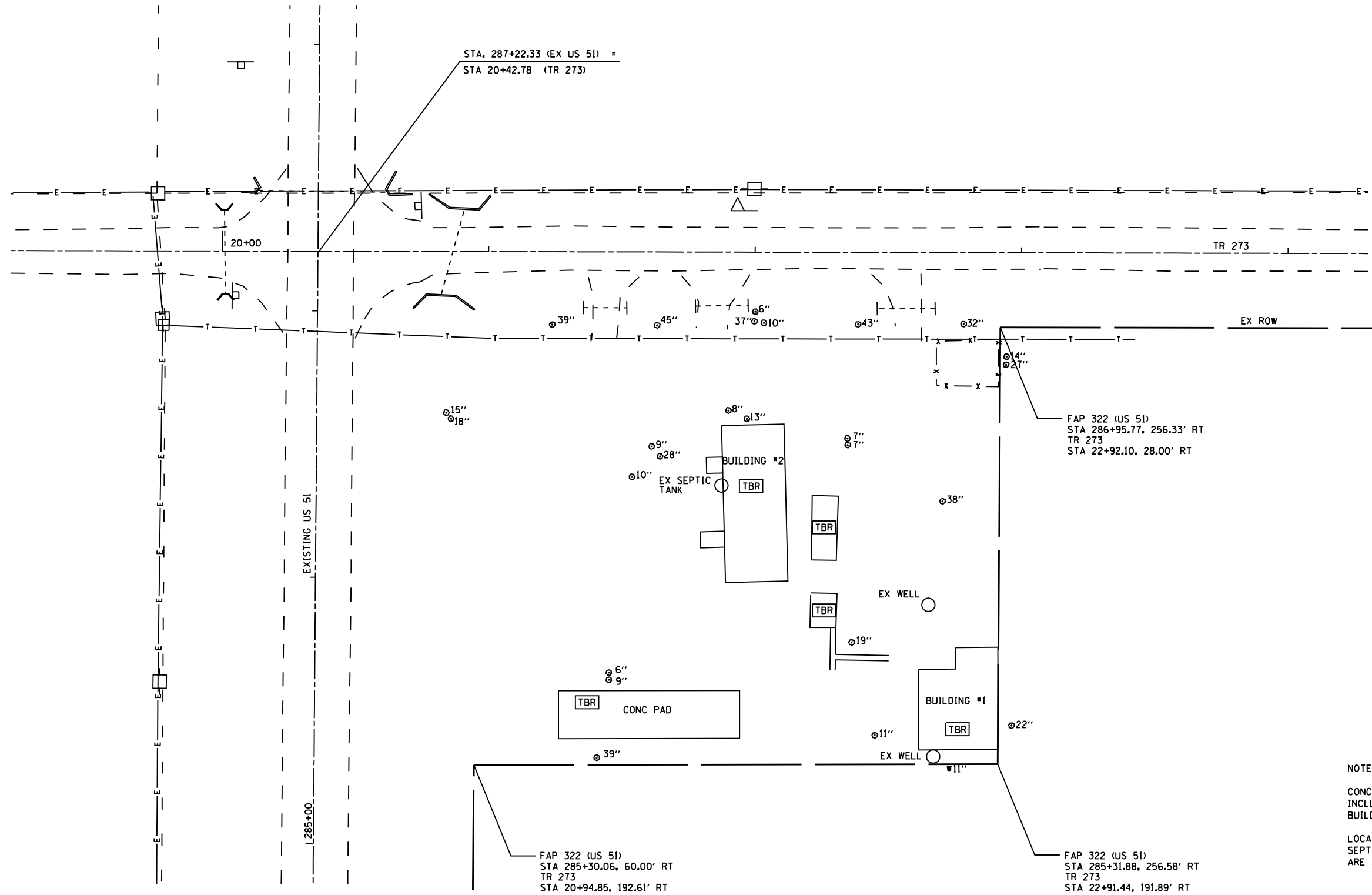
NOTE: DIMENSIONS ARE APPROXIMATE

REVISIONS	
NAME	DATE

ILLINOIS DEPARTMENT OF TRANSPORTATION  
 FLOOR PLAN / MATERIAL TABLE  
 BUILDING #2  
 FAP 322 (US 51)  
 SECTION 06 BUILDING DEMOLITION 2006  
 CHRISTIAN COUNTY

SCALE: VERT. \_\_\_\_\_  
 HORIZ. \_\_\_\_\_  
 DATE \_\_\_\_\_ DRAWN BY \_\_\_\_\_  
 CHECKED BY \_\_\_\_\_

F.A.P. RTE.	SECTION	COUNTY	TOTAL SHEETS	SHEET NO.
322	.	CHRISTIAN	8	6
STA.		TO STA.		
FED. ROAD DIST. NO.	ILLINOIS	FED. AID PROJECT		
• D6 BUILDING DEMOLITION 2006				



NOTES:  
 CONCRETE REMOVAL IS INCLUDED IN THE COST OF BUILDING REMOVAL.  
 LOCATIONS OF EXISTING SEPTIC TANK AND WELLS ARE APPROXIMATE.

FAP 322 (US 51)  
 STA 285+30.06, 60.00' RT  
 TR 273  
 STA 20+94.85, 192.61' RT

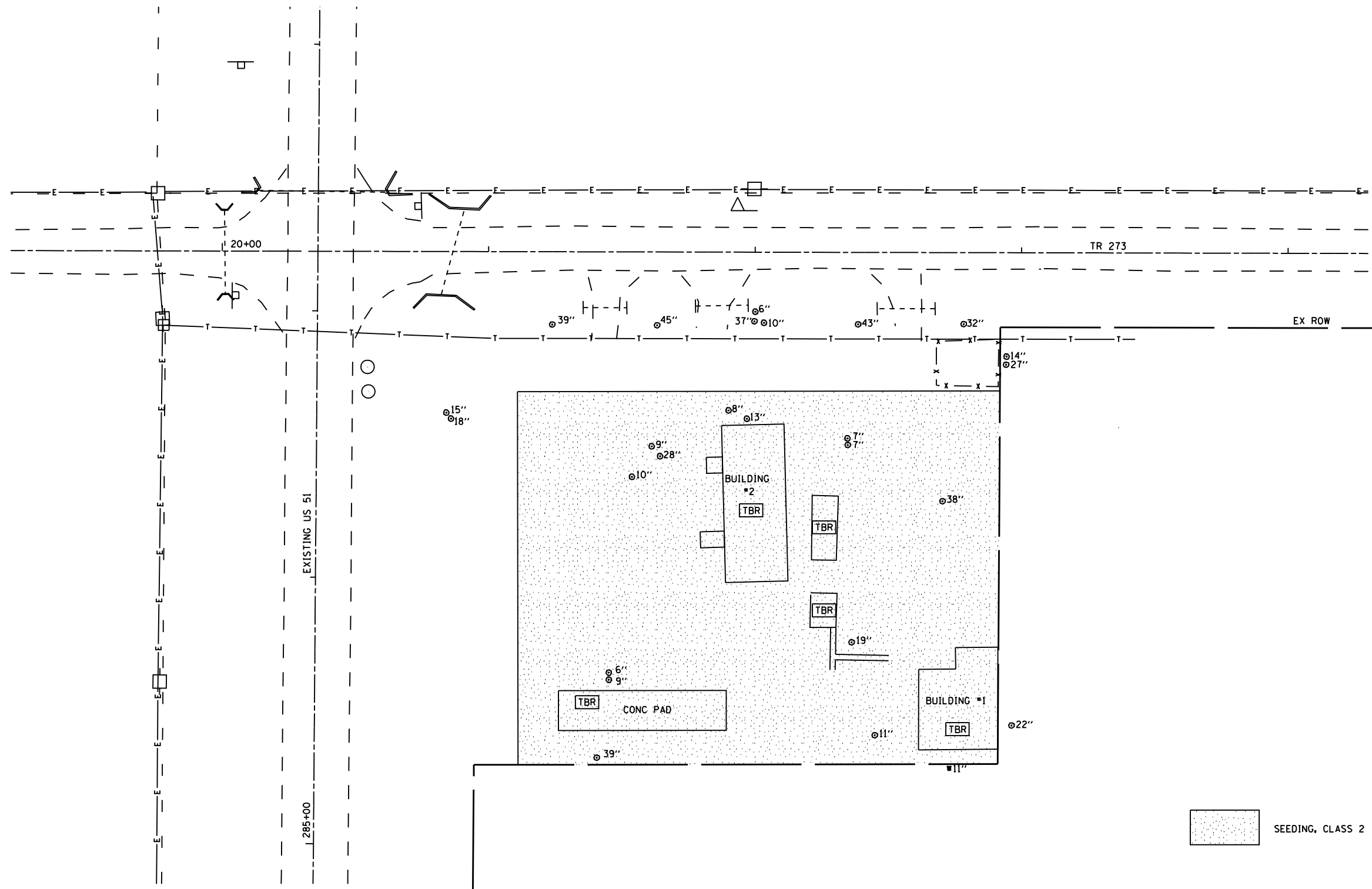
FAP 322 (US 51)  
 STA 285+31.88, 256.58' RT  
 TR 273  
 STA 22+91.44, 191.89' RT

REVISIONS	
NAME	DATE

ILLINOIS DEPARTMENT OF TRANSPORTATION  
 PLAN SHEET  
 FAP 322 (US 51)  
 SECTION D6 BUILDING DEMOLITION 2006  
 CHRISTIAN COUNTY  
 SCALE: VERT. \_\_\_\_\_  
 HORIZ. \_\_\_\_\_  
 DATE \_\_\_\_\_  
 DRAWN BY \_\_\_\_\_  
 CHECKED BY \_\_\_\_\_

PLOT DATE: 12/18/2006  
 FILE NAME: c:\p\proj\10-06-08-287-285\plan\plan.dwg  
 PLOT SCALE: 1/4" = 1'-0"  
 USER NAME: jlaughlin

F.A.P. RTE.	SECTION	COUNTY	TOTAL SHEETS	SHEET NO.
322	.	CHRISTIAN	8	7
STA.		TO STA.		
FED. ROAD DIST. NO.	ILLINOIS	FED. AID PROJECT		
• D6 BUILDING DEMOLITION 2006				



 SEEDING, CLASS 2

PLOT DATE : 2/18/2006  
 FILE NAME : c:\p\proj\10-06-06\10-06-06.dwg  
 PLOT SCALE : 42.50% / IN.  
 USER NAME : laughlin

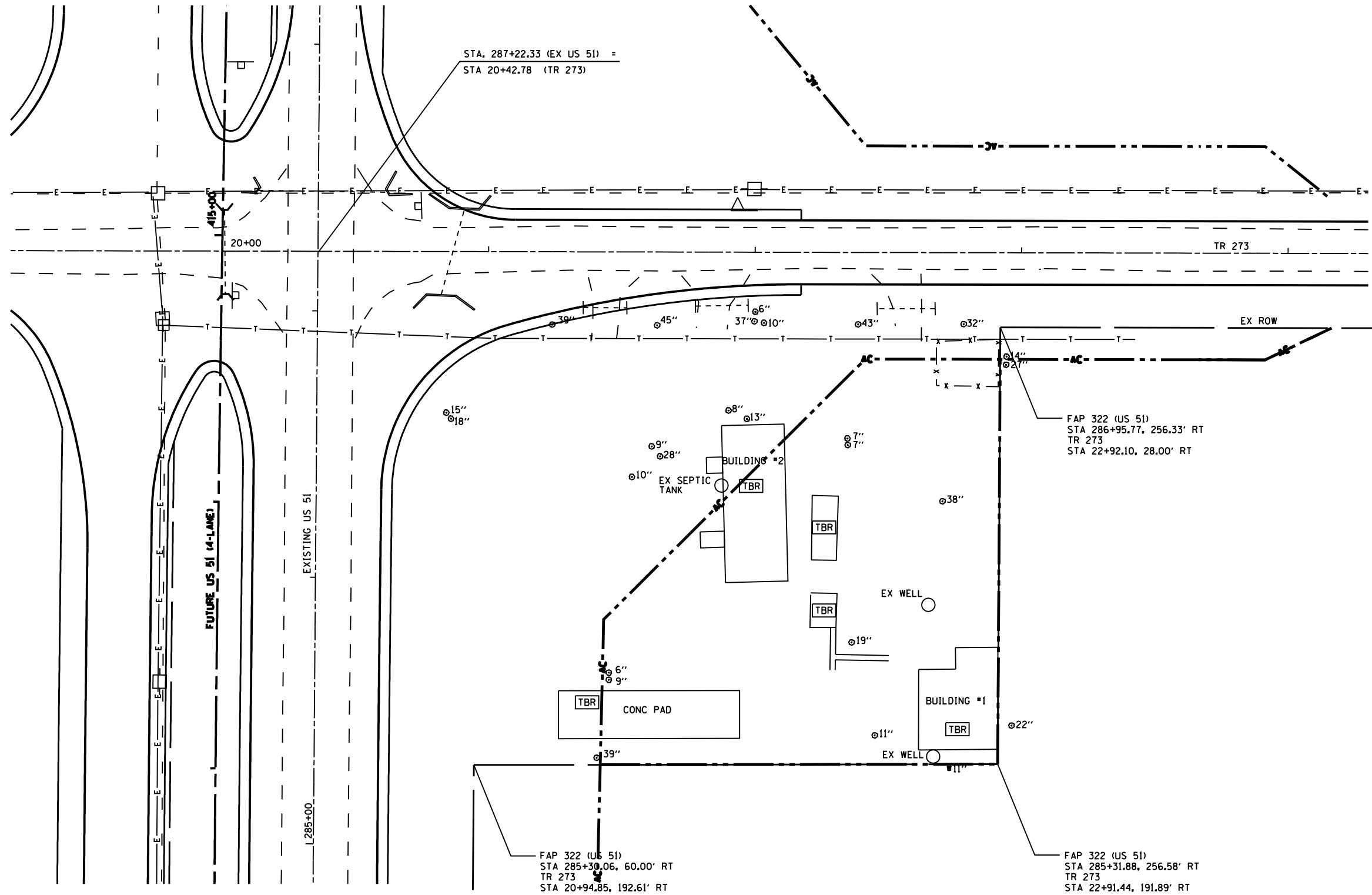
REVISIONS	
NAME	DATE

ILLINOIS DEPARTMENT OF TRANSPORTATION  
 SEEDING PLAN SHEET  
 FAP 322 (US 51)  
 SECTION D6 BUILDING DEMOLITION 2006  
 CHRISTIAN COUNTY

SCALE: VERT. \_\_\_\_\_  
 HORIZ. \_\_\_\_\_  
 DATE \_\_\_\_\_

DRAWN BY \_\_\_\_\_  
 CHECKED BY \_\_\_\_\_

F.A.P. RTE.	SECTION	COUNTY	TOTAL SHEETS	SHEET NO.
322	.	CHRISTIAN	8	8
STA.		TO STA.		
FED. ROAD DIST. NO.	ILLINOIS	FED. AID PROJECT		
• D-6 BUILDING DEMOLITION 2006				



FOR INFORMATION ONLY

REVISIONS	
NAME	DATE

ILLINOIS DEPARTMENT OF TRANSPORTATION  
 FUTURE FOUR LANE PLAN SHEET  
 FAP 322 (US 51)  
 D-6 BUILDING DEMOLITION 2006  
 CHRISTIAN COUNTY  
 SCALE: VERT. \_\_\_\_\_  
 HORIZ. \_\_\_\_\_  
 DATE \_\_\_\_\_ DRAWN BY \_\_\_\_\_  
 CHECKED BY \_\_\_\_\_

PLT DATE: 12/18/2006  
 FILE NAME: c:\p\proj\10-06-08\10-06-08\10-06-08.dwg  
 PLT SCALE: 1/4"=1'-0"  
 USER NAME: j.loughlin