

B.M. #12 P.R. Spike in Root of 40' Cherry Tree.
Elev. 597.71
Elev. 597.71

STATE OF ILLINOIS
DEPARTMENT OF PUBLIC WORKS & BUILDINGS
DIVISION OF HIGHWAYS

084-0081

DATE	DESCRIPTION	BY	NO.
11/18/55	CONSTRUCTION	SI	15

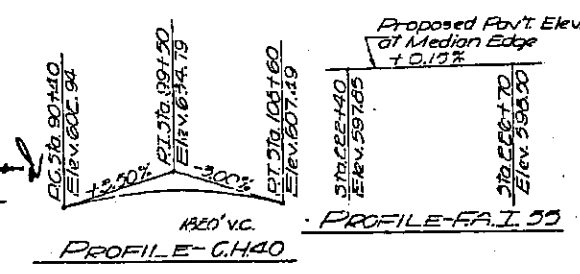
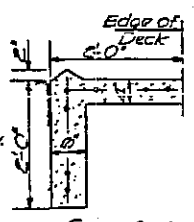
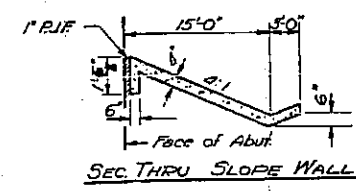
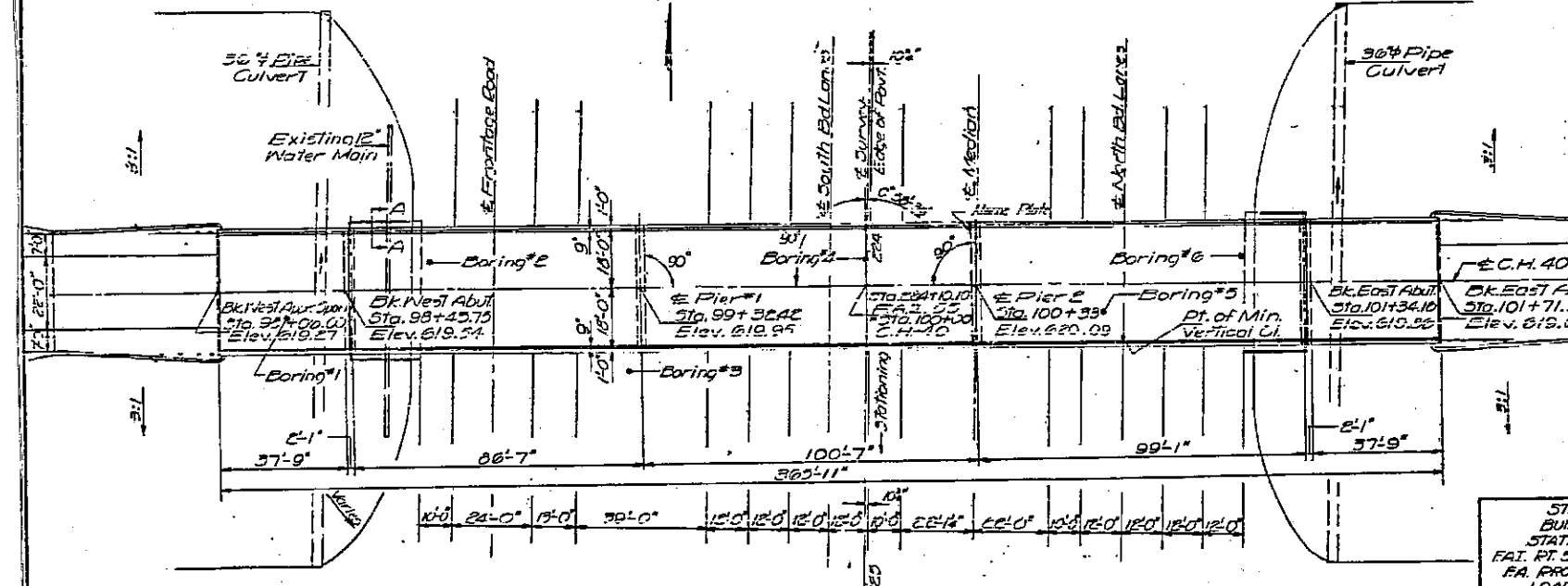
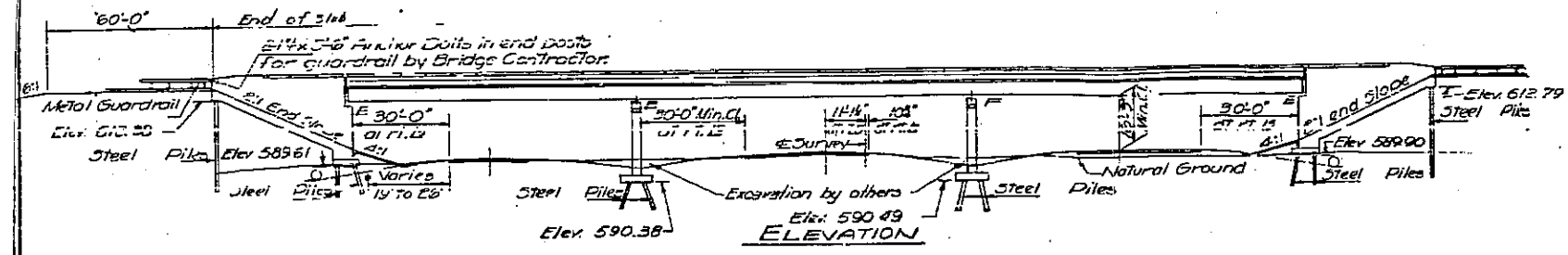
GENERAL NOTES

Coarse aggregate to be used in parapet handrail and abutment wingwalls must be free of chert, flint, lignite, lignite and soft sandstone.
The concrete floor slab shall be finished in accordance with Article 21.19 of the Standard Specifications.
Permanent forms will not be permitted in forming the concrete floor.
All reinforcement bars shall be lapped 24 diameters unless otherwise shown.
Slope wall shall be reinforced with welded wire fabric 6"x6" mesh, weighing 35 lbs per 100 sq ft.
For item Precast Prestressed Concrete Beam, see supplemental specifications effective January 3, 1966.
All structural steel shall conform to A.S.T.M. Designation A36.
All welding shall conform to the current specifications for Welded Highway and Railway Bridges of the American Welding Society and Special Provisions.
Field welding of construction accessories to the bottom flanges, or in a distance of 1/4 of the span length each way from pier supports on the top flanges of beams or girders, will not be permitted. Field welding in other areas will be permitted only when approved by the Engineer.
Rivets 3/4", Open Holes 1/2", unless otherwise noted.
Anchor bolts shall be set before fastening cross frames over supports.
Stud shear connectors on the beam flanges shall be placed in the field after the steel has been erected and the deck forms are in place.
Flange shear connectors are included in the quantity of structural steel.
Number required = 3140 Estimated Weight = 1930 lbs.
Except as otherwise provided, all structural steel shall receive one shop coat of paint and two field coats of paint. See special provisions for paint.
Exposed surfaces of the expansion devices, which are inaccessible after erection, shall receive two shop coats of paint. All other surfaces shall be given one shop coat of paint. Anchor studs shall not be painted.
Expansion devices are included in the quantity of structural steel. Est. weight = 2880 lbs.
Excavation for portions of structures in the embankment shall not be classified.
The Contractor shall drive two (2) steel test piles, one each at the West Abut and at the Pier 2 each, in a permanent location as directed by the Engineer before ordering the remainder of the piles.
Steel piles at Approach Bent shall be driven in holes preformed thru the embankment in accordance with Article 60.9 (c) of the Standard Specifications.

TOTAL BILL OF MATERIAL

ITEM	UNIT	SUPER	SUB	TOTAL
Class A Excav for Structure	Cu Yds	240	240	
Class X Concrete	Cu Yds	442.8	306.5	749.3
Structural Steel	Lbs	31100		31100
Aluminum Handrail	Ln Ft	690		690
Pipe Culverts (Type 44) 36"	Ln Ft			320
Reinforcement Bars	Lbs	106590	3000	109590
Steel Piles (B.P. 36)	Ln Ft			2663
Test Piles Steel (B.P. 36)	Pc			2
Name Plates				1
Slope Wall (A)	Sq Yds			204
Bridge Seal Sealant	L.S.			1
Precast Prestressed Conc. P.B.M. 36"	Ln Ft	380		380
Protective Coat	Sq Yds	1670		1670

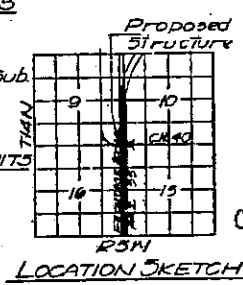
* Applies to Abutments only.



DESIGN STRESSES
FIELD UNITS
fc = 1200 psi - Deck Slab
fc = 1400 psi - Curb, Parapet, Sub.
fs = 20,000 psi - Reinf.
fs = 20,000 psi - Struct.
yc = 75 psi - Ftgs.
n = 10
PRECAST PRESTRESSED UNITS
fc = 5000 psi.
fs = 4000 psi.
fs = 243,000 psi - 3 Strands
fs = 173,600 psi - 3 Strands
Allowable Fut. W.S. 25" 10'
Allowable Deflection 1/1600 Composite
LOADING H5 20-44

STA. 284+10.10
BUILT 19 BY
STATE OF ILLINOIS
FAI. RT. 55 SEC. 84-4-34B
FA. PROJ. I-55-3(6)
LOADING H5 20

NAME PLATE
See Std. 2113-1



GENERAL PLAN & ELEVATION
C.H. 40 OVER FAI. RT. 55
PROJ. I-55-3(6) 87
084-0081 FAI. RT. 55 SEC. 84-4-34B
SANGAMON COUNTY
STATION 284+10.10

DESIGNED P. A. B...
CHECKED...
DRAWN J. M. HENNER
CHECKED...
EXAMINED...
PASSED...
APPROVED...

D-96-010-06
SN 084-0081
EXISTING BRIDGE PLANS
FOR INFORMATION ONLY
(NOT TO SCALE)