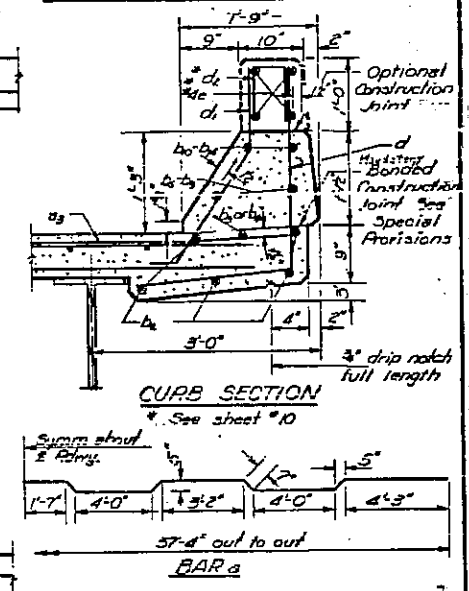
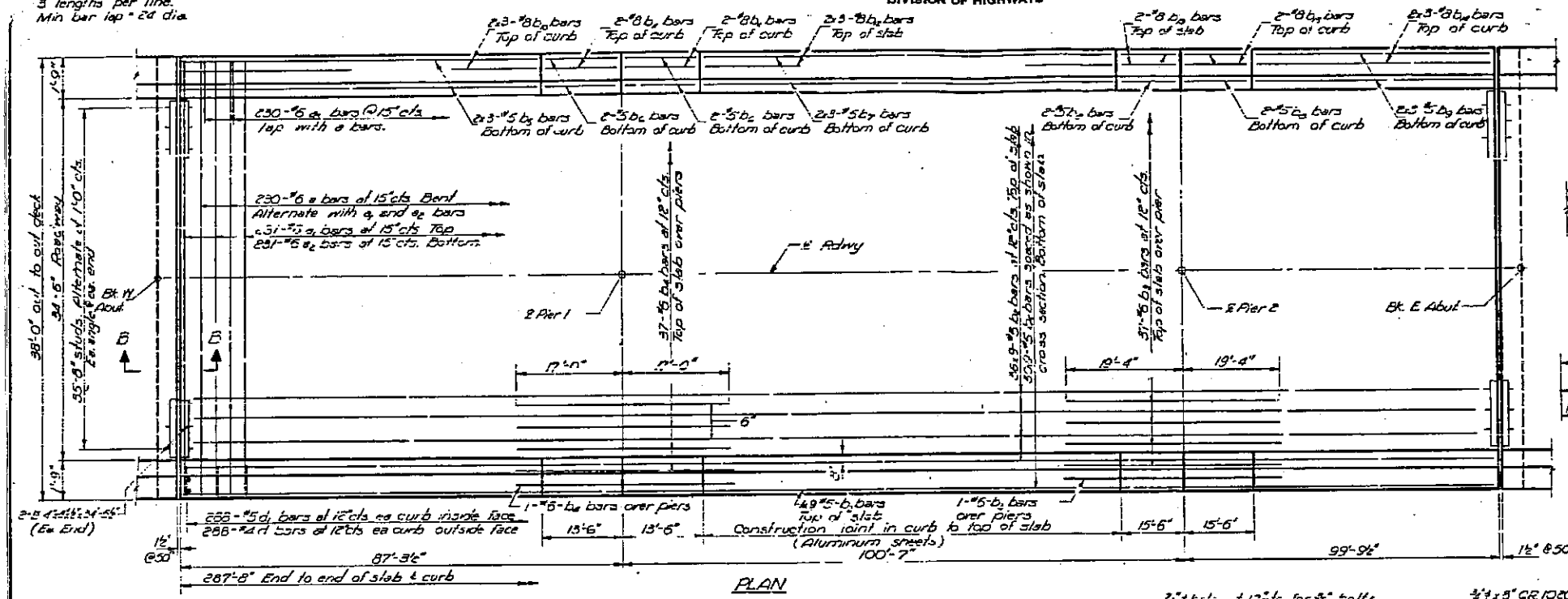


STATE OF ILLINOIS
DEPARTMENT OF PUBLIC WORKS & BUILDINGS
DIVISION OF HIGHWAYS

SHEET NO. 7
15 SHEETS

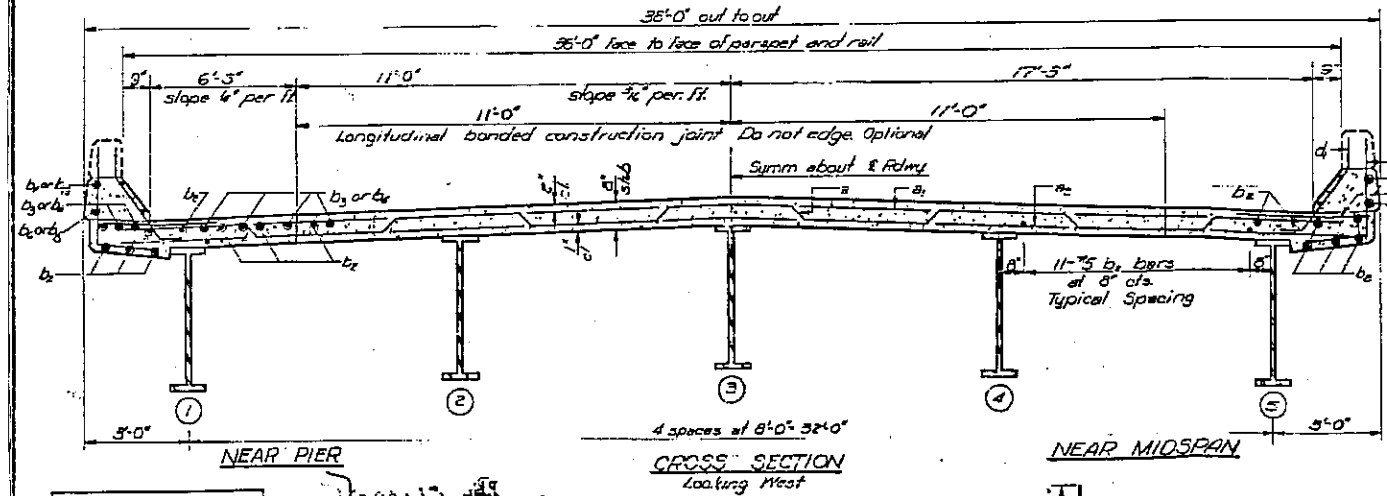
SHEET 6 OF 13
CONTRACT 72A28

As indicated thus 20x3 - 5/16 indicates 20 lines of bars with 3 lengths per line.
Min bar lap = 24 dia.



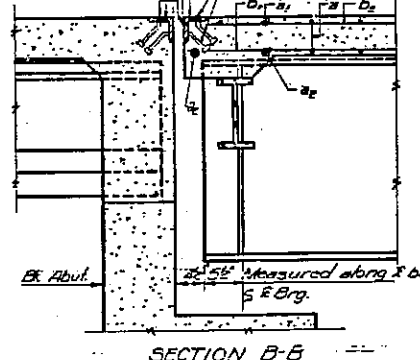
BILL OF MATERIAL

Bar No	Size	Length	Quantity
a	230	#6	38'-0"
a ₁	231	#6	37'-4"
a ₂	231	#6	37'-0"
a ₃	460	#6	4'-0"
b ₁	792	#5	33'-3"
b ₂	52	#5	33'-0"
b ₃	57	#5	34'-0"
b ₄	12	#5	25'-6"
b ₅	8	#5	15'-3"
b ₆	8	#5	29'-0"
b ₇	8	#5	15'-9"
b ₈	12	#5	28'-10"
b ₉	12	#5	28'-10"
b ₁₀	8	#8	13'-3"
b ₁₁	8	#8	13'-3"
b ₁₂	12	#8	25'-4"
b ₁₃	8	#8	15'-3"
b ₁₄	12	#8	29'-4"
c	576	#4	4'-7"
d	576	#5	3'-5"
Reinforcement Bars	Lbs	21,820	
Structural Steel	Lbs	3,110	
Class X Concrete	Cu Yd	310.8	



3/4" holes at 12" c/c for 3/8" bolts set on 2 1/2" gage line. All bolts shall be burned, sawed or clipped off flush with back of curb after forms are removed.
1/4" vent holes at 12" c/c set on 1 1/2" gage line

3/4 x 5" CR 1020 STL granular or solid flux tilled headed studs automatically exit rebar (Alternate at 1'-0" c/c)
Fabricate to crown

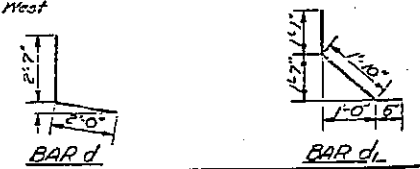


Height of bearing assemblies with load plates and anchor bolts are included as structural steel. Est. Mt = 7930

The lengths and quantities of longitudinal reinforcement and Class X Concrete in parapets are not included in above quantities. See sheet 70

SUPERSTRUCTURE DETAILS
FAL RT 55 SEC 84-4-34B
SANGAMON COUNTY
STA. 224+19.10

DESIGNED: A. H. ...
CHECKED: ...
DRAWN: J. M. ...
CHECKED: J. W. ...



D-96-010-06
SN 084-0081
EXISTING BRIDGE PLANS
FOR INFORMATION ONLY
(NOT TO SCALE)