

F.A.I. RTE.	SECTION	COUNTY	TOTAL SHEETS	SHEET NO.
55	D6 REHAB BR PAINTING 2006	SANGAMON	13	1

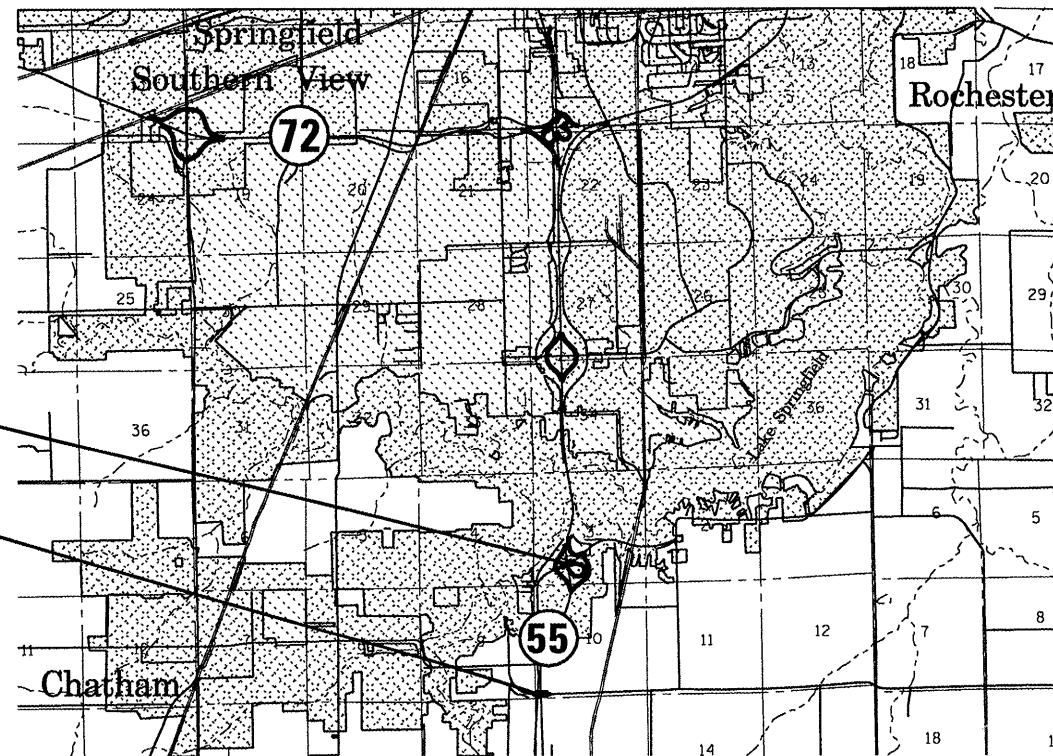
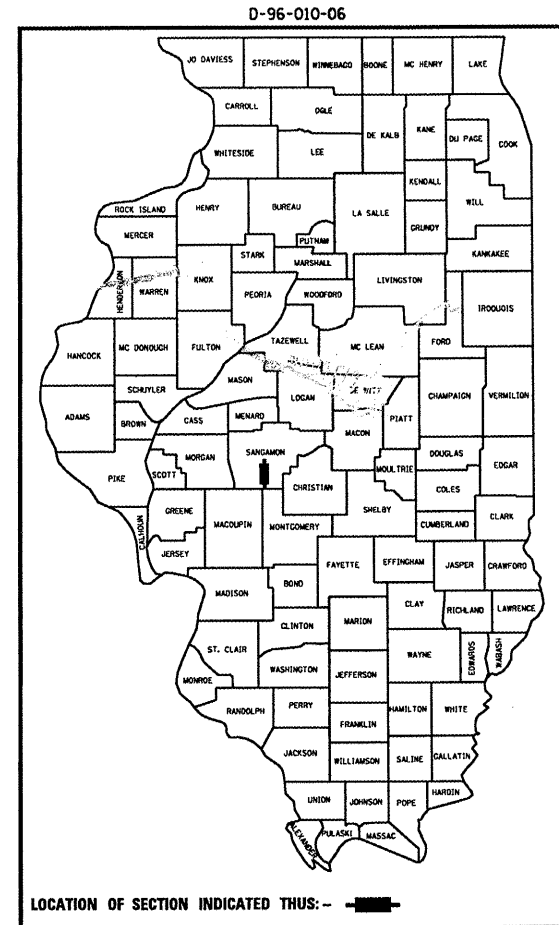
+1
14

STATE OF ILLINOIS
DEPARTMENT OF TRANSPORTATION
DIVISION OF HIGHWAYS

**PROPOSED
HIGHWAY PLANS**

FAI ROUTE 55 (I-55)
SECTION - D6 REHAB BR PAINTING 2006-1
PROJECT C-96-013-06
SANGAMON COUNTY

FOR INDEX OF SHEETS, SEE SHEET NO. 2



SN 084-0116

SN 084-0081

NET LENGTH OF SECTION: 9432' = 1.79 MI

OPERATIONS DESIGN & PLANNING ENGINEER
CECIL DOWNING - (217) 785-4036

BRIDGE INSPECTION ENGINEER
DAVE COPENBARGER - (217) 785-5306

J.U.L.I.E.
JOINT UTILITY LOCATION INFORMATION FOR EXCAVATION
1-800-892-0123

CONTRACT NO. 72A28

STATE OF ILLINOIS
DEPARTMENT OF TRANSPORTATION
DIVISION OF HIGHWAYS

SUBMITTED *Feb 10 2006*
Chris M. Reed
DEPUTY DIRECTOR OF HIGHWAYS, REGION ENGINEER

March 24 2006
Mike Nune
ENGINEER OF DESIGN AND ENVIRONMENT

March 24 2006
Milton R. Sees P.E.
DIRECTOR OF HIGHWAYS, CHIEF ENGINEER

PRINTED BY THE AUTHORITY
OF THE STATE OF ILLINOIS

Rev.

INDEX OF SHEETS

- 1 COVER SHEET
- 2 INDEX, GENERAL NOTES, & SIGNATURES
- 3 SUMMARY OF QUANTITIES
- 4 TRAFFIC STAGING DETAIL
- 5-13 EXISTING STRUCTURE PLANS
- 13A. TEMPORARY BRIDGE TRAFFIC
SIGNAL LOOP DETAIL

STANDARDS

- 701006-02
- 701101-01
- 701106-01
- 701201-02
- 701321-08
- 701400-02
- 701402-05
- 701406-04
- 701411-03
- 701446
- 702001-06

GENERAL NOTES

CLEANING AND PAINTING OF THE EXISTING STRUCTURAL STEEL SHALL BE AS SPECIFIED IN THE SPECIAL PROVISIONS FOR "CLEANING AND PAINTING EXISTING STEEL STRUCTURES". ALL EXISTING STEEL, EXCEPT THE INTERIOR STEEL BEAMS DIRECTLY OVER THE CENTER LANES OF I-55, SHALL BE CLEANED PER NEAR WHITE BLAST CLEANING - SSPC-SP10. ALL EXISTING STEEL, EXCEPT THE INTERIOR STEEL BEAMS DIRECTLY OVER THE CENTER LANES OF I-55, SHALL BE PAINTED ACCORDING TO THE REQUIREMENTS OF PAINT SYSTEM 1 - OZE/U. THE COLOR OF THE FINAL FINISH COAT FOR EXTERIOR AND BOTTOM FLANGE OF THE FASCIA BEAMS SHALL BE INTERSTATE GREEN, MUNSELL NO 7.5G 4/8. THE COLOR OF THE FINAL FINISH COAT FOR ALL INTERIOR STEEL SURFACES SHALL BE GRAY, MUNSELL NO 5B 7/1.

THE SSPC-QP-1 AND SSPC-QP2 PAINTING CONTRACTOR CERTIFICATIONS WILL BE REQUIRED FOR THIS BRIDGE.
THE USE OF AIR MONITORS WILL BE REQUIRED.

STATE OF ILLINOIS DEPARTMENT OF TRANSPORTATION DIVISION OF HIGHWAYS DISTRICT 6	
EXAMINED <u>January 25</u> 20 <u>06</u>	<u>[Signature]</u> ENGINEER OF OPERATIONS
EXAMINED <u>Jan 31</u> 20 <u>06</u>	<u>[Signature]</u> ENGINEER OF PROGRAM IMPLEMENTATION
EXAMINED <u>FEBRUARY 7</u> 20 <u>06</u>	<u>[Signature]</u> ENGINEER OF PROGRAM DEVELOPMENT

C-96-013-06
INDEX, GENERAL
NOTES, & SIGNATURES

Rev.

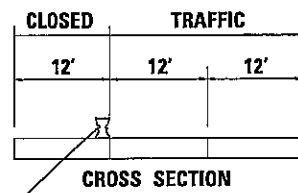
SUMMARY OF QUANTITIES				RURAL 100% STATE SANGAMON
ITEM #	DESCRIPTION	UNIT	QUANTITY	SFTY-2A
X0324401	PORTABLE TEMPORARY BARRIER SYSTEM, TEST LEVEL 3	FOOT	1300	1300
X0324402	RELOCATE PORTABLE TEMPORARY BARRIER SYSTEM, TEST LEVEL 3	FOOT	5200	5200
X7011420	TRAFFIC CONTROL AND PROTECTION, STANDARD 701411	L SUM	1	1
50600600	CLEANING AND PAINTING STEEL BRIDGE, NO. 1	L SUM	1	1
50600700	CLEANING AND PAINTING STEEL BRIDGE, NO. 2	L SUM	1	1
50606400	CONTAINMENT AND DISPOSAL OF LEAD PAINT CLEANING RESIDUES	L SUM	1	1
67100100	MOBILIZATION	L SUM	1	1
70100405	TRAFFIC CONTROL AND PROTECTION, STANDARD 701321	EACH	1	1
70100450	TRAFFIC CONTROL AND PROTECTION, STANDARD 701201	L SUM	1	1
70100700	TRAFFIC CONTROL AND PROTECTION, STANDARD 701406	L SUM	1	1
70100805	TRAFFIC CONTROL AND PROTECTION, STANDARD 701402	L SUM	1	1
70100815	TRAFFIC CONTROL AND PROTECTION, STANDARD 701446	L SUM	1	1
70106500	TEMPORARY BRIDGE TRAFFIC SIGNALS	EACH	2	2

C-96-013-06
SUMMARY OF QUANTITIES

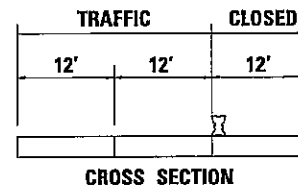
Rev.



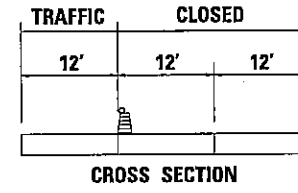
LANE CLOSURE 1



LANE CLOSURE 2



LANE CLOSURE 3



TAPER BARRICADES AS PER STD 701446

NOTES:

ONLY SOUTHBOUND LANES ARE SHOWN. NORTHBOUND LANES SHALL FOLLOW THE SAME PLAN.

WHEN WORKING IN THE CENTER LANE, THE CLOSURE SHALL CONSIST OF BARRICADES AS PER STD 701446. A TRUCK MOUNTED ATTENUATOR (TMA) SHALL BE SUPPLIED FOR EACH BRIDGE AS DETAILED IN LANE CLOSURE 3. THE CONTRACTOR SHALL INCLUDE THE COST OF THE TMA'S IN THE BID PRICE FOR TRAFFIC CONTROL AND PROTECTION, STD 701446.

THE CONTRACTOR MAY ELECT TO REVERSE THE ORDER OF THE LANE CLOSURES, BUT THE CENTER LANE SHALL ONLY BE CLOSED IN CONJUNCTION WITH THE ADJACENT PASSING LANE.

BARRIER TAPERS SHALL BE AS PER STD 701402

ALL BARRICADES, BARRICADE LIGHTING, SIGNING, ETC. SHALL BE PAID FOR UNDER STD 701402 AND STD 701446

TANGENT LENGTHS OF THE PORTABLE TEMPORARY BARRIER SYSTEM MAY BE SHORTENED WHEN DEEMED SAFE TO DO SO BY THE ENGINEER. BARRIER SYSTEM LENGTHS MAY ONLY BE LENGTHENED WITH PRIOR APPROVAL FROM THE ENGINEER.

LANE CLOSURES ON THE FAI 55 WEST FRONTAGE ROAD AT SN 084-0081 SHALL BE AS PER STD 701321. BARRIER FOR THIS CLOSURE WILL BE CONSIDERED AS RELOCATED BARRIER FROM THE MAINLINE FOR PAYMENT PURPOSES.

THE PRIVATE ENTRANCE 150' SOUTH OF SN 084-0081 ON THE FAI 55 WEST FRONTAGE ROAD SHALL BE CLOSED DURING STAGED CONSTRUCTION IN THAT AREA. ALTERNATE ACCESS TO THE RESIDENCE ALREADY EXISTS TO THE WEST. THE CLOSURE SHALL CONSIST OF TWO TYPE 3 BARRICADES WITH 2-SIDED STRIPING AND BI-DIRECTIONAL FLASHING LIGHTS. AN R11-2 "ROAD CLOSED" SIGN SHALL BE MOUNTED ON EACH OF THE TYPE 3 BARRICADES. THE CONTRACTOR SHALL INCLUDE THE COST OF THE CLOSURE IN THE BID PRICE FOR TRAFFIC CONTROL AND PROTECTION, STD 701321.

PORTABLE TEMPORARY BARRIER SYSTEM

TAPER BARRICADES AS PER STD 701402

+/- 150' TAPER

SN 084-0116

+/- 500' WORK ZONE

+/- 9000' (1.7 MI) BARRICADES AS PER STD 701402

+/- 150' TAPER

SN 084-0081

+/- 500' WORK ZONE

TAPER BARRICADES AS PER STD 701402

+/- 150' TAPER

SN 084-0116

+/- 500' WORK ZONE

+/- 9000' (1.7 MI) BARRICADES AS PER STD 701402

+/- 150' TAPER

SN 084-0081

+/- 500' WORK ZONE

TMA

100'

SN 084-0116

TMA

100'

SN 084-0081

C-96-013-06

TRAFFIC STAGING
DETAIL
(NOT TO SCALE)

B.M. #12 RR Spike in Root of 40' Cherry Tree.
Pt. 160' of Station 224+32 Elev. 597.71

STATE OF ILLINOIS
DEPARTMENT OF PUBLIC WORKS & BUILDINGS
DIVISION OF HIGHWAYS

084-0081

DATE	BY	REVISION
3/18	CH	1
5/14	CH	2

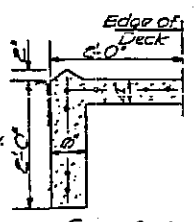
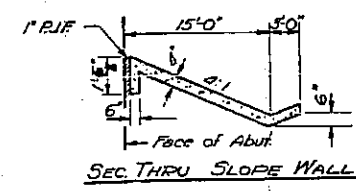
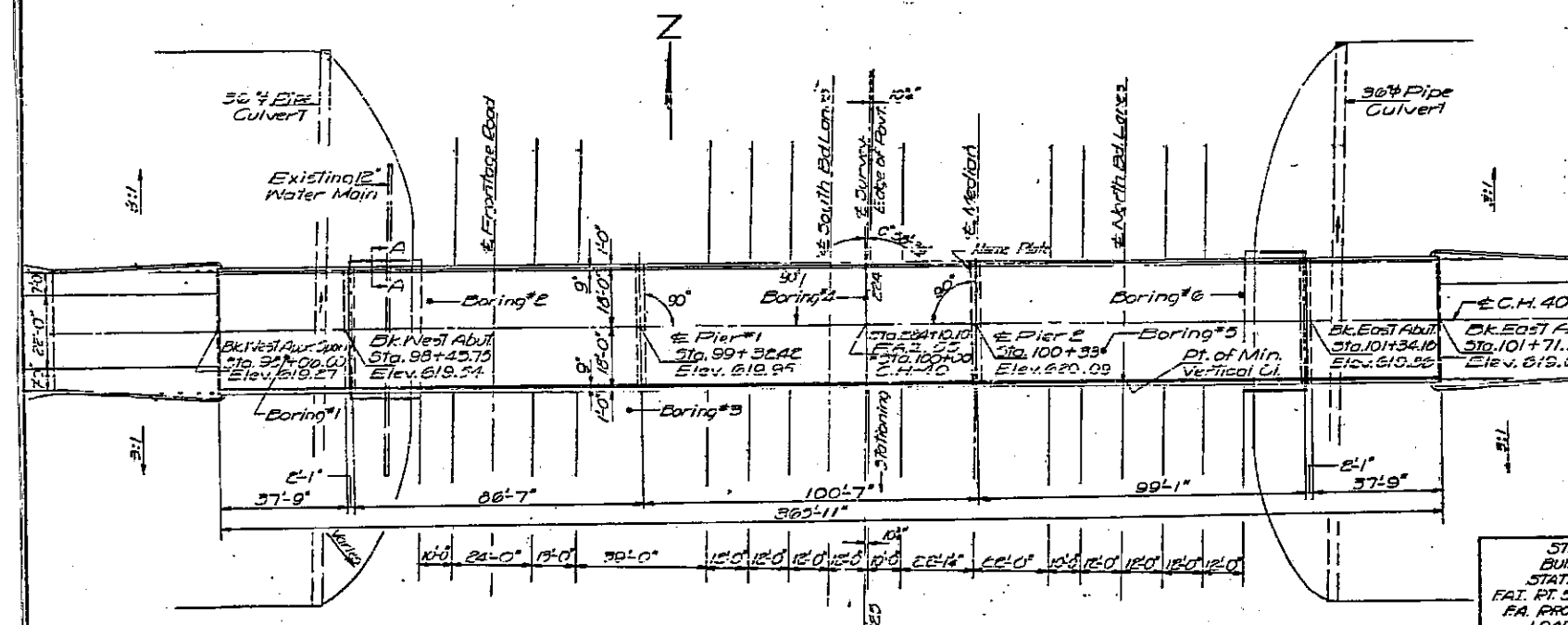
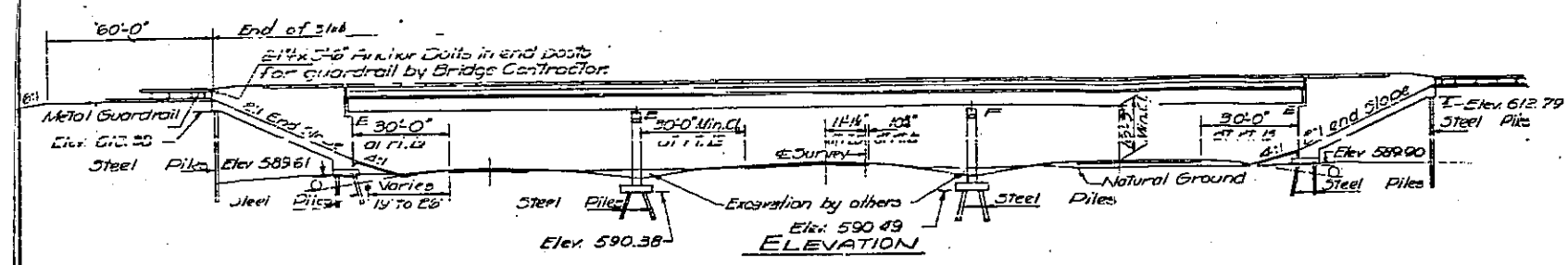
GENERAL NOTES

Coarse aggregate to be used in parapet handrail and abutment wingwalls must be free of chert, flint, lignite, lignite and soft sandstone.
The concrete floor slab shall be finished in accordance with Article 2.19 of the Standard Specifications.
Permanent forms will not be permitted in forming the concrete floor.
All reinforcement bars shall be lapped 24 diameters unless otherwise shown.
Slope wall shall be reinforced with welded wire fabric 6"x6" mesh, weighing 35 lbs per 100 sq ft.
For item Precast Prestressed Concrete Beam, see supplemental specifications effective January 3, 1966.
All structural steel shall conform to A.S.T.M. Designation A36.
All welding shall conform to the current specifications for Welded Highway and Railway Bridges of the American Welding Society and Special Provisions.
Field welding of construction accessories to the bottom flanges, or in a distance of 1/4 of the span length each way from pier supports on the top flanges of beams or girders, will not be permitted. Field welding in other areas will be permitted only when approved by the Engineer.
Rivets 3/4", Open Holes 1/2", unless otherwise noted.
Anchor bolts shall be set before fastening cross frames over supports.
Stud shear connectors on the beam flanges shall be placed in the field after the steel has been erected and the deck forms are in place.
Flange shear connectors are included in the quantity of structural steel.
Number required = 3140 Estimated Weight = 1930 lbs.
Except as otherwise provided, all structural steel shall receive one shop coat of paint and two field coats of paint. See special provisions for paint.
Exposed surfaces of the expansion devices, which are inaccessible after erection, shall receive two shop coats of paint. All other surfaces shall be given one shop coat of paint. Anchor studs shall not be painted.
Expansion devices are included in the quantity of structural steel. Est. weight = 2880 lbs.
Excavation for portions of structures in the embankment shall not be classified.
The Contractor shall drive two (2) steel test piles, one each at the West Abut and at the Pier 2 each, in a permanent location as directed by the Engineer before ordering the remainder of the piles.
Steel piles at Approach Bent shall be driven in holes pre-cored thru the embankment in accordance with Article 60.9 (c) of the Standard Specifications.

TOTAL BILL OF MATERIAL

ITEM	UNIT	SUPER	SUB	TOTAL
Class A Excav for Structure	Cu Yds	240	240	
Class X Concrete	Cu Yds	422.8	306.5	729.3
Structural Steel	Lbs	31100		31100
Aluminum Handrail	Ln Ft	690		690
Pipe Culverts (Type 44) 36"x48"	Ln Ft			320
Reinforcement Bars	Lbs	106590	30000	136590
Steel Piles (BEP36)	Ln Ft			2663
Test Piles Steel (BEP36)	Lbs			6
Name Plates				1
Slope Wall (4')	Sq Yds			204
Bridge Seal Sealant	L.S.			1
Precast Prestressed Conc. P.A.M. 36"	Ln Ft	380		380
Protective Coat	Sq Yds	1670		1670

* Applies at Abutments only.

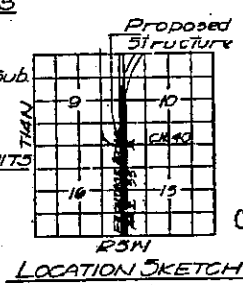


DESIGN STRESSES
FIELD UNITS

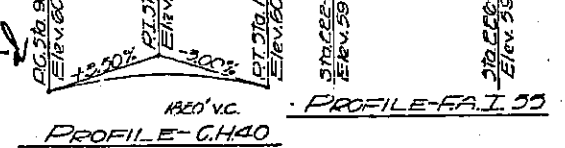
$f_c = 1200$ psi - Deck Slab
 $f_c = 1400$ psi - Curb, Parapet, Sub.
 $f_s = 20,000$ psi - Reinf.
 $f_s = 20,000$ psi - Struct.
 $f_c = 75$ psi - FTgs.

PRECAST PRESTRESSED UNITS

$f_c = 5000$ psi.
 $f_t = 4000$ psi.
 $f_s = 243,000$ psi - 3 Strands
 $f_t = 173,600$ psi - 3 Strands
All loads per F.U.T. N.S. 25' 10'
Allowable Deflection = $\frac{1}{250}$ Composite
LOADING H5 20-44



DESIGNED *P. A. B...*
CHECKED *...*
DRAWN *J. M. HENNER*
CHECKED *...*



GENERAL PLAN & ELEVATION
C.H. 40 OVER F.A.T. 1112

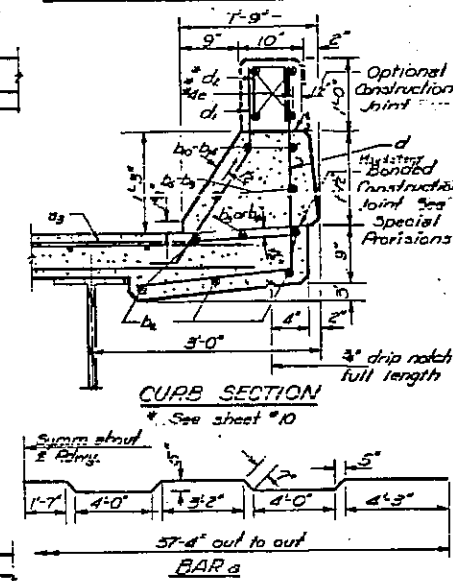
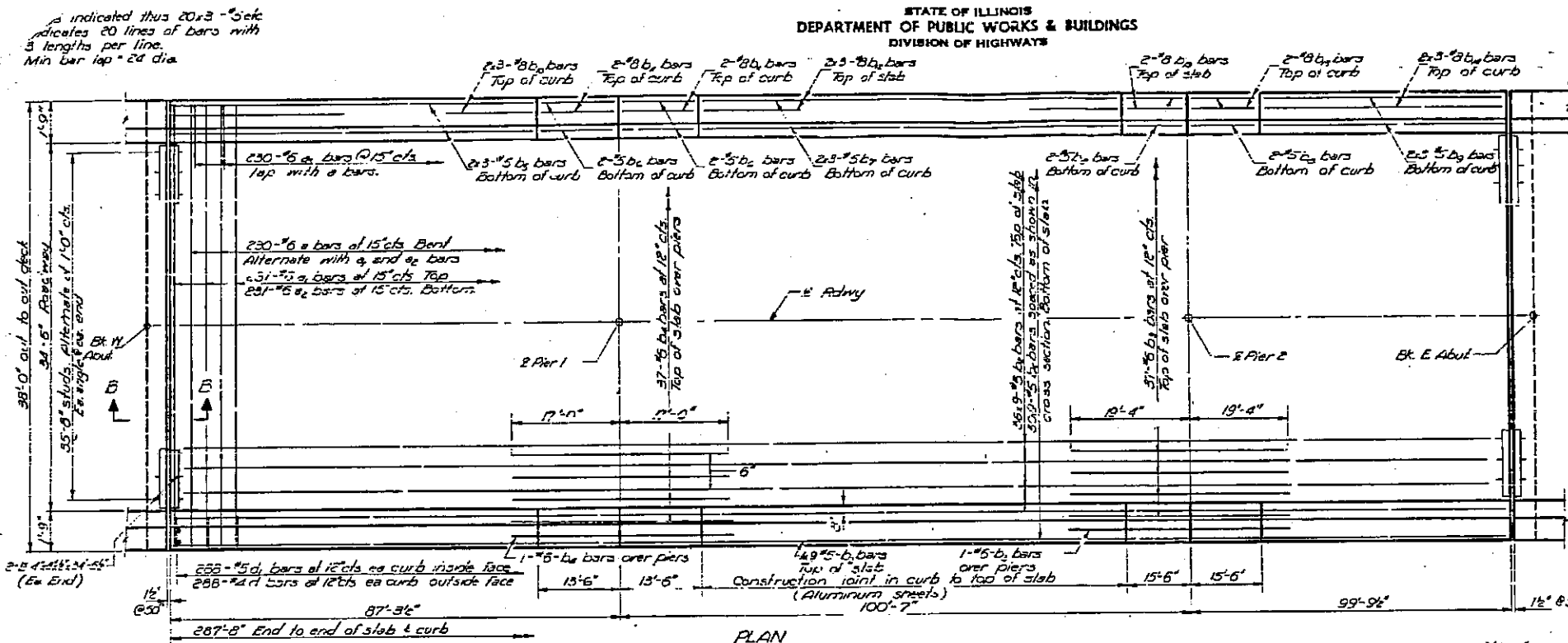
PROJ. I-55-3(5)87
FAI RT. 55 SEC. 84-4-3HB
SANGAMON COUNTY
STATION 224+100

D-96-010-06
SN 084-0081
EXISTING BRIDGE PLANS
FOR INFORMATION ONLY
(NOT TO SCALE)

STATE OF ILLINOIS
DEPARTMENT OF PUBLIC WORKS & BUILDINGS
DIVISION OF HIGHWAYS

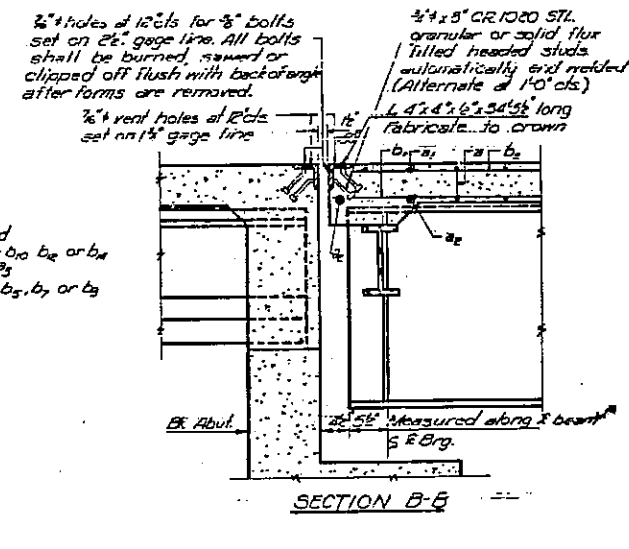
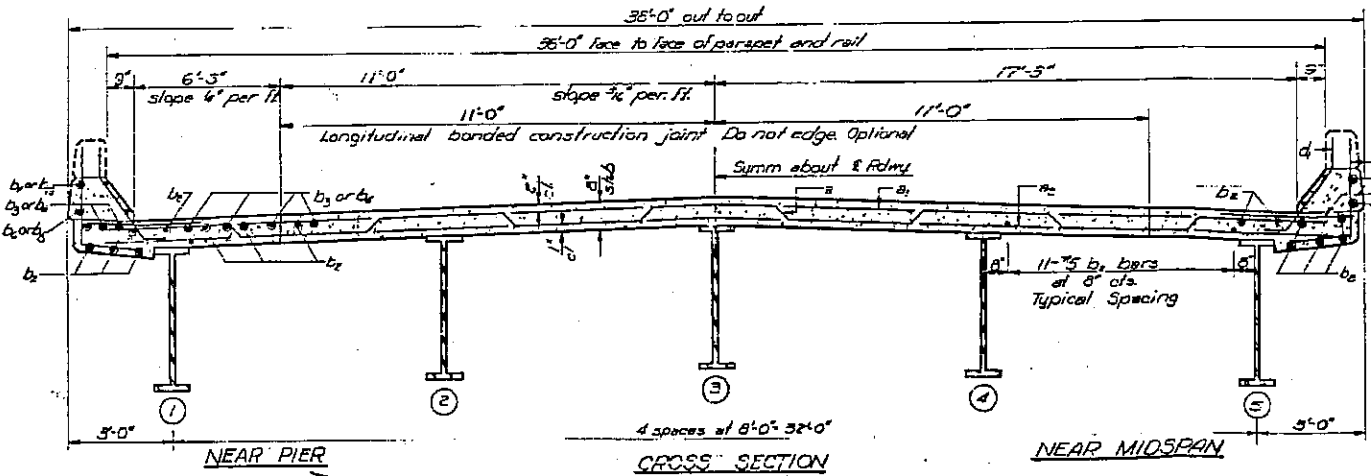
DATE	BY	NO.	REV.
7-24-55	Sangamon	51	22

SHEET NO. 7
15 SHEETS



BILL OF MATERIAL

Bar No	Size	Length	Quantity
a	230 #6	38'-0"	---
a1	231 #6	37'-4"	---
a2	231 #6	37'-0"	---
a3	260 #6	4'-0"	---
b1	792 #5	33'-3"	---
b2	52 #5	33'-0"	---
b3	37 #5	33'-0"	---
b4	12 #5	25'-6"	---
b5	8 #5	15'-3"	---
b6	8 #5	28'-0"	---
b7	12 #5	28'-0"	---
b8	8 #5	15'-3"	---
b9	12 #5	28'-0"	---
b10	12 #5	28'-0"	---
b11	8 #5	15'-3"	---
b12	12 #5	28'-0"	---
c	576 #4	4'-7"	---
d	576 #5	3'-5"	---
Reinforcement Bars Lbs. 21,870			
Structural Steel Lbs. 31100			
Class X Concrete Cu Yd. 310.8			



Weight of bearing assemblies with load plates and anchor bolts are included as structural steel. Est. Mt. = 7930

The lengths and quantities of longitudinal reinforcement and Class X Concrete in parapets are not included in above quantities. See sheet 70

DESIGNED *A. H. ...*
CHECKED *...*
DRAWN *J. M. ...*
CHECKED *...*

EXAMINED *...*
PASSED *...*
APPROVED *...*

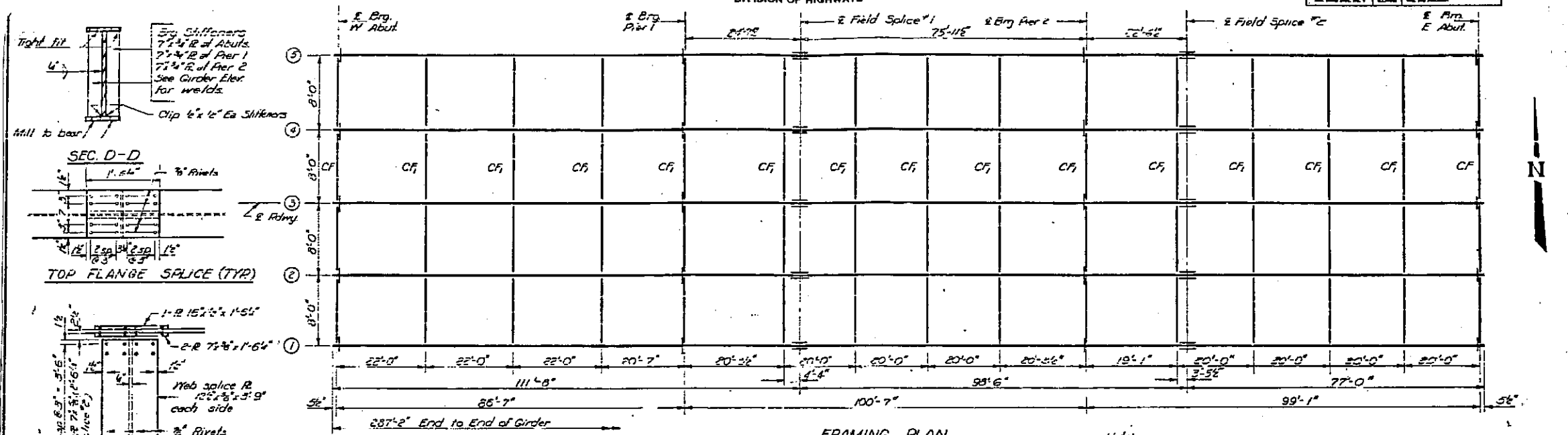
SUPERSTRUCTURE DETAILS
FAL RT. 55 SEC. 84-4-34B
SANGAMON COUNTY
STA. 224+19.10

D-96-010-06
SN 084-0081
EXISTING BRIDGE PLANS
FOR INFORMATION ONLY
(NOT TO SCALE)

STATE OF ILLINOIS
DEPARTMENT OF PUBLIC WORKS & BUILDINGS
DIVISION OF HIGHWAYS

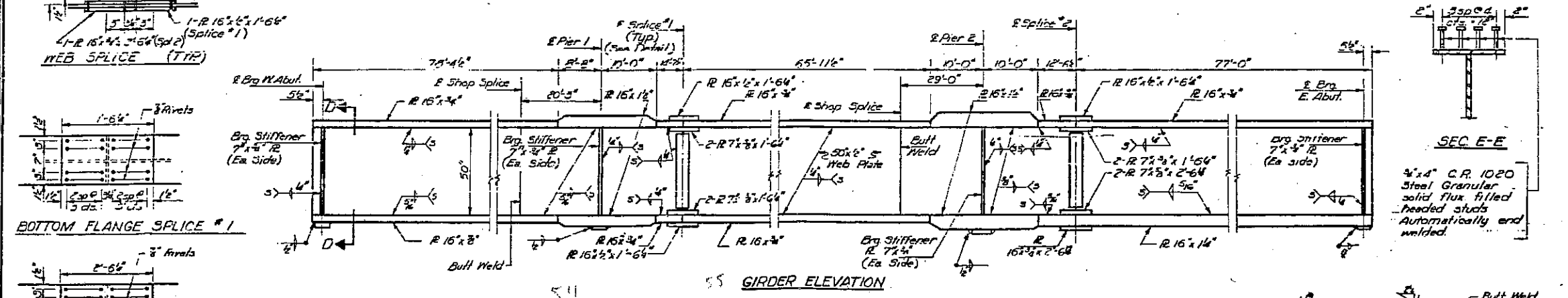
PROJECT NO.	318	SECTION	SI	SHEET NO.	23
SANGAMON			15 SHEETS		

SHEET 7 OF 13
CONTRACT 72A28

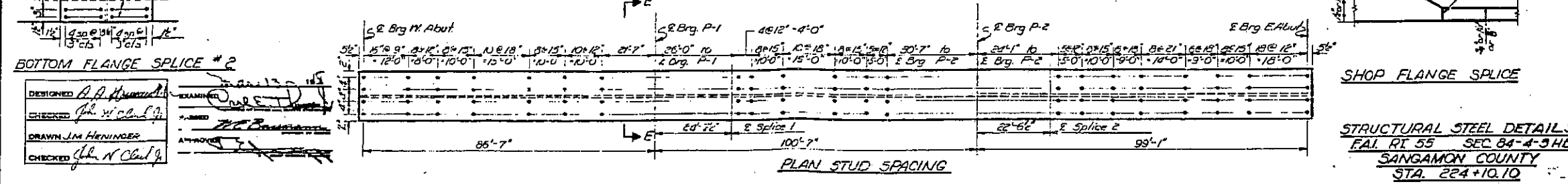


FRAMING PLAN

Note: Work this sheet with sheet #9

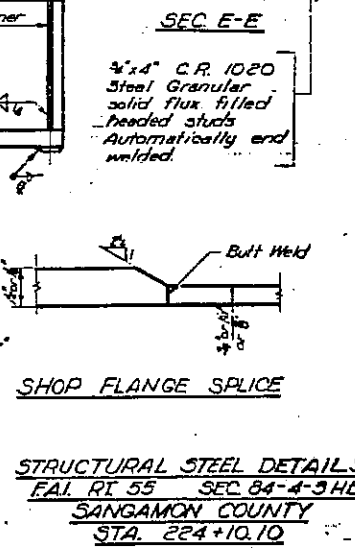


GIRDER ELEVATION



PLAN STUD SPACING

DESIGNED	R. A. HENNINGER	CHECKED	J. N. CHAPMAN
DRAWN	J. M. HENNINGER	APPROVED	R. A. HENNINGER
CHECKED	J. N. CHAPMAN		



STRUCTURAL STEEL DETAILS
FAI RI 55 SEC 84-4-3HB
SANGAMON COUNTY
STA. 224+10.10



SEC E-E
3/4" x 4" C.R. 1020
Steel Granular
solid flux filled
headed studs
Automatically end
welded.

Butt Weld

SHOP FLANGE SPICE

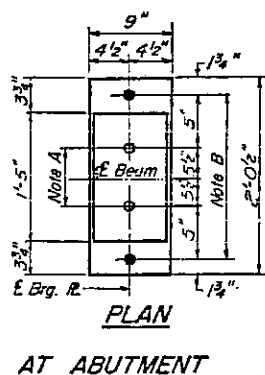
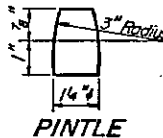
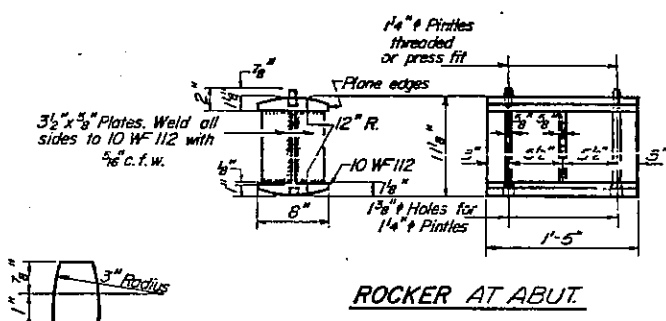
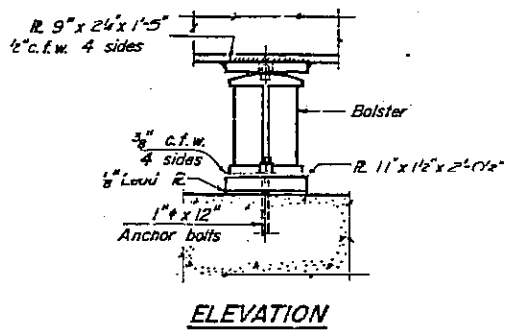
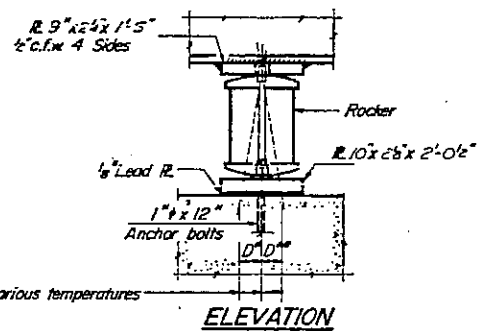
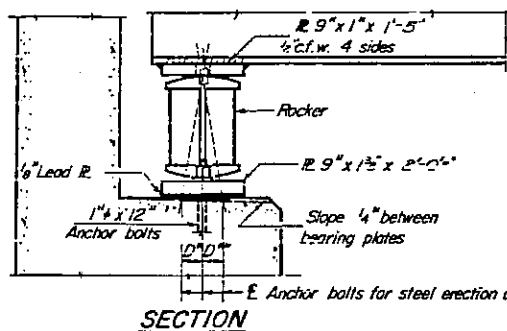
STRUCTURAL STEEL DETAILS

FAI RI 55 SEC 84-4-3HB

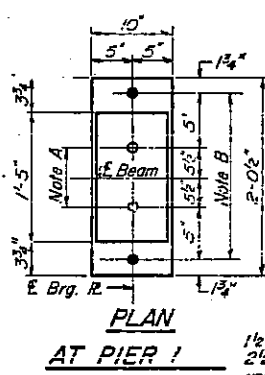
SANGAMON COUNTY

STA. 224+10.10

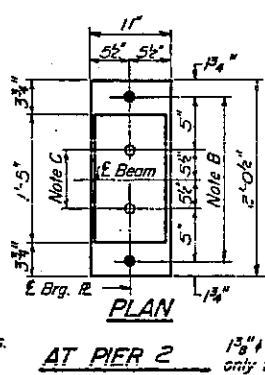
D-96-010-06
SN 084-0081
EXISTING BRIDGE PLANS
FOR INFORMATION ONLY
(NOT TO SCALE)



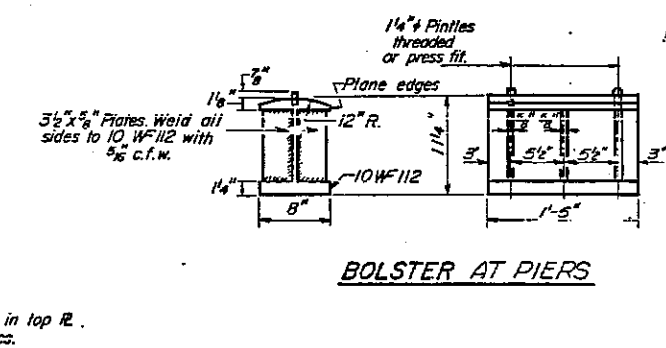
NOTE A
1 1/2" Holes - 1" deep in top R.
for pintles. Thread or press fit
pintles into bottom R.



NOTE B
1 1/2" Holes for 1" anchor bolts.
2 1/2" x 2 1/2" x 5/16" R. Washers
under nut.



NOTE C
1 1/2" Holes 1" deep in top R.
only for 1/4" pintles.

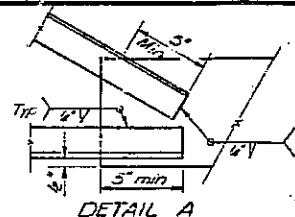


NOTES ON SETTING OF ANCHOR BOLTS AT EXP. BRGS.

- D^* (Side of brg. away from fixed brg.)
 $D^* = \frac{1}{8}$ " per each 100' of expansion for
every 15° fall below the normal temp.
of 50°F.

D^{**} (Side of brg. toward fixed brg.)
 $D^{**} = \frac{1}{8}$ " per each 100' of expansion for
every 15° rise above the normal temp.
of 50°F.
- After beams have been erected and dimensions D^* or D^{**}
determined, holes shall be drilled and anchor bolts shall
be grouted in place. All fixed anchor bolts may be built
into the masonry.

BEARING ASSEMBLY DETAILS



ELEVATION TOP OF WEB
(for fabrication only)

Loc. of Girder	113	244	3
E Brg. W. Abut.	618.57	618.72	618.84
E Shop S-1	618.90	619.02	619.17
E Brg. P-1	618.94	619.09	619.21
E Field S-1	619.33	619.14	619.26
F Shop S-2	619.07	619.22	619.34
E Brg. P-2	619.04	619.19	619.31
E Field S-2	619.02	619.17	619.23
E Brg. E. Abut.	618.89	619.04	619.16

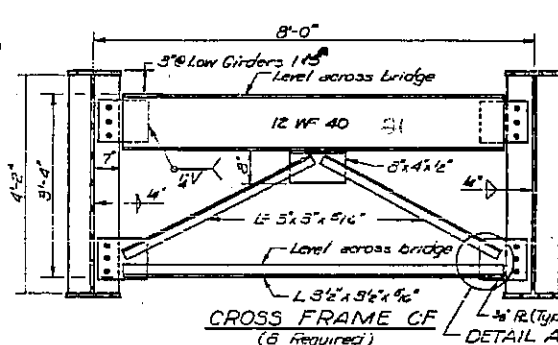
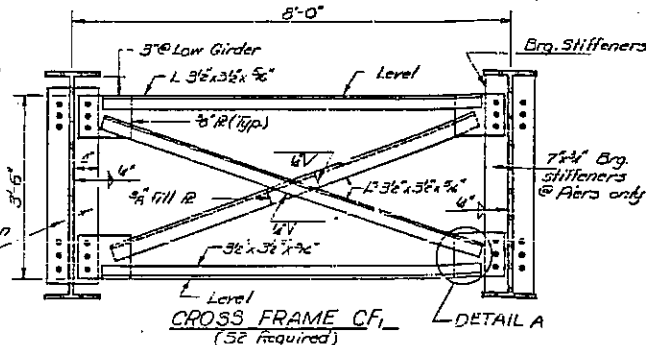
Note:
See sheet # 8 for framing plan. All
butt welded joints shall be prequalified
according to AWS D2.0-66 Specifi-
cations. For details of welding designa-
tions see AWS D2.0-66 Specifi-
cations.
Weight of structural steel billed on
sheet # 7. The contact surfaces of
all field splices shall be free of all
oil & paint.

Work this sheet with sheet # 8

DESIGNED *A. Hoffmann*
CHECKED *J. H. Clark*
DRAWN *J. M. H.*
CHECKED *J. H. Clark*

EXAMINED *David S. ...*
FORWARDED *J. E. ...*
APPROVED *J. E. ...*

4x4 connection
pins into
moderate frames



CROSS FRAMES &
BEARING DETAILS
FAI. RT. 55 SEC. 84-4-3HB
SANGAMON COUNTY
STA. 224+10.10

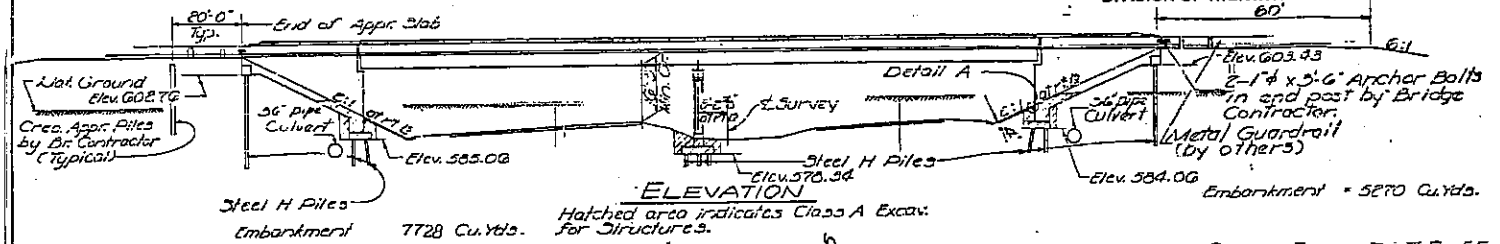
D-96-010-06
SN 084-0081
EXISTING BRIDGE PLANS
FOR INFORMATION ONLY
(NOT TO SCALE)

B.M. U.S.C.F.S. E-119 Brass plate
150' Lt. Sta. 305+00 Elev. 584.59

STATE OF ILLINOIS
DEPARTMENT OF PUBLIC WORKS & BUILDINGS
DIVISION OF HIGHWAYS

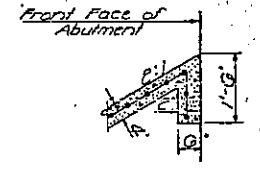
084-016

PROJECT NO.	084-016	DATE	12/13	SHEET NO.	13
CONTRACT NO.	72A28	DESIGNER	Sangaman	DATE	12/13
SHEET NO. 13 OF 13 CONTRACT NO. 72A28					

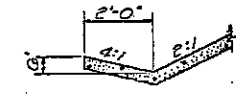


APPROACH PILE DATA
Type - Crecated
Reqd. Length - 13 Ft.
Us. Req'd - 26 (15 @ E. Appr. & 11 @ W. Appr.)

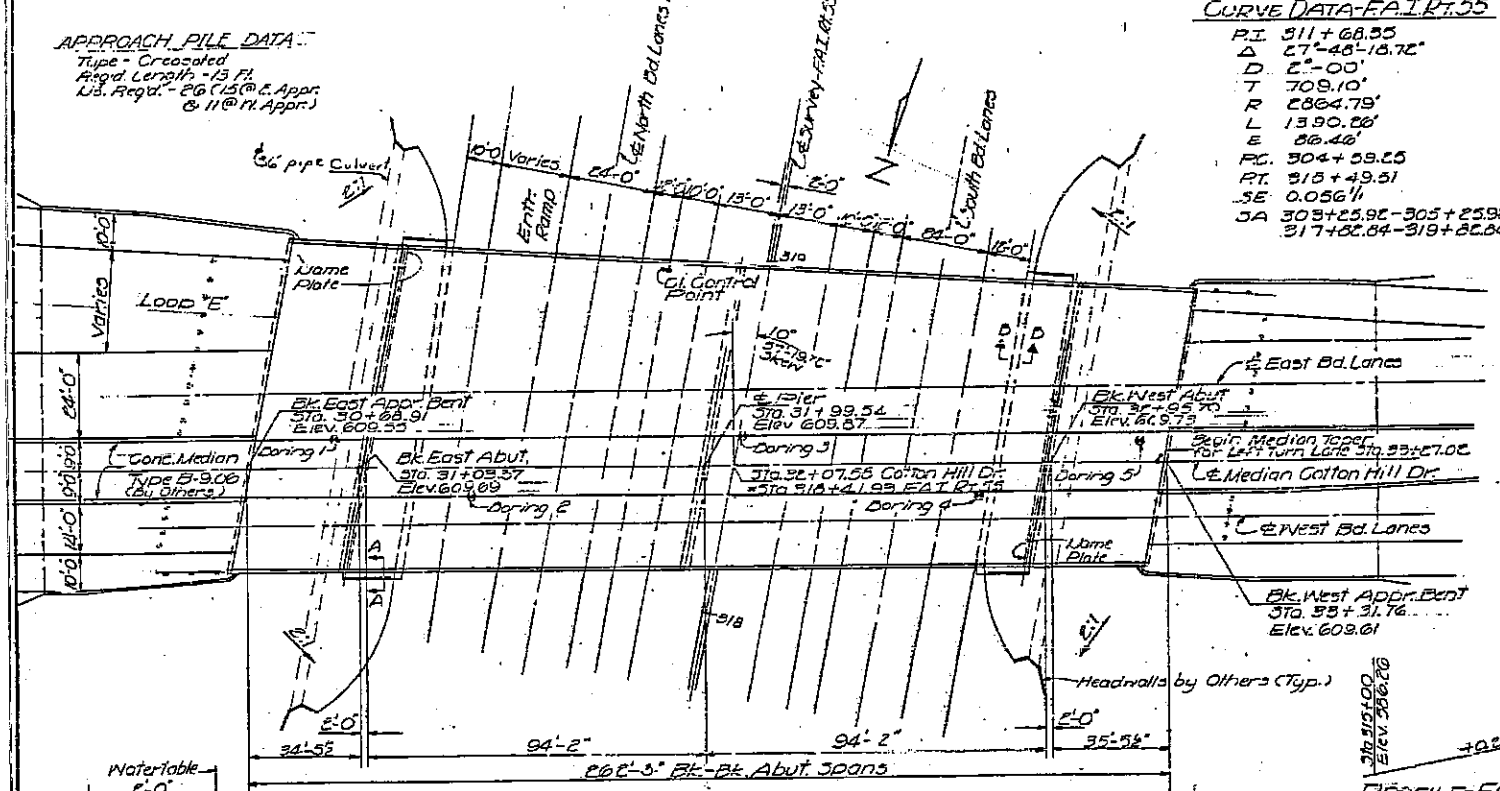
CURVE DATA-FAI RT. 55
P.I. 311+68.33
Δ 27°-48'-18.72"
D. 2°-00'
T 709.10'
R 2864.79'
L 1390.26'
E 88.46'
P.C. 304+59.25
P.T. 318+49.51
SE 0.05611
S.A. 305+25.92-305+25.92
317+82.64-319+22.04



DETAIL A

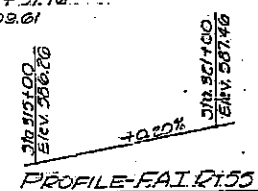


SEC. D-D

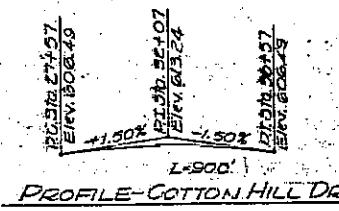


PLAN

CURVE DATA-COTTON HILL DR.
P.I. 29+27.71
Δ 47°-36'-46.56"
D. 4°-00'
T 358.07'
R 432.40'
L 699.49'
E 45.78'
P.C. 28+70.84
P.T. 29+70.33
SE 0.00341
S.A. 28+42.04-29+34.04
29+08.33-30+90.33



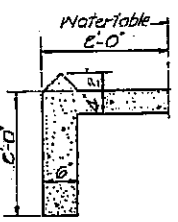
PROFILE-FAI RT. 55



PROFILE-COTTON HILL DR.



LOCATION SKETCH



SEC. A-A

DESIGNED: J. P. Panno
CHECKED: I. Kasper
DRAWN: JAS/jpc
CHECKED: I.K.
EXAMINED: J. P. Panno
PASSED: H. G. Bannerman
APPROVED: N. E. Kraft

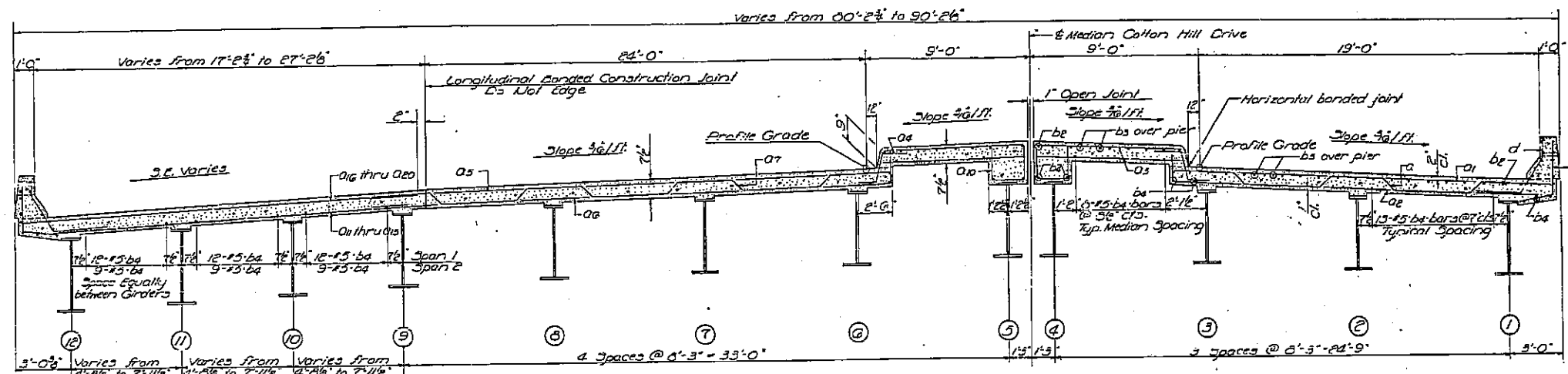
STATION 318+41.93
BUILT 196 BY
STATE OF ILLINOIS
F.A.I. RT. 55 SEC. 04-4-PHD
F.A. PROJ. 1-55-3(3)
LOADING H520

NAME PLATE
See Std. 2113-1

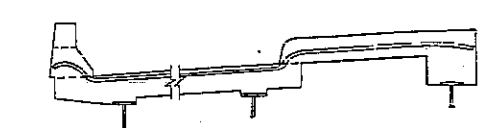
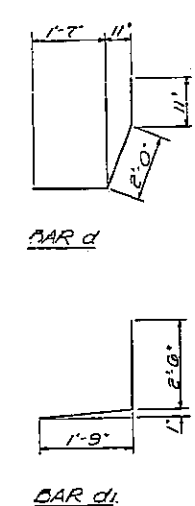
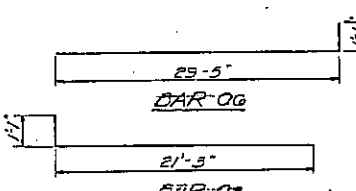
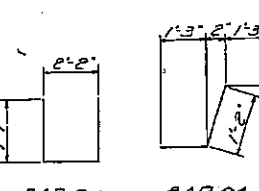
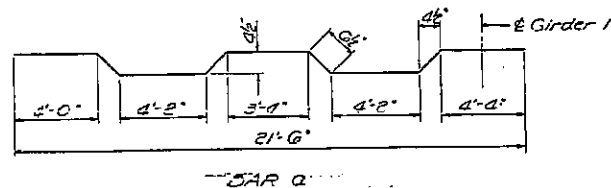
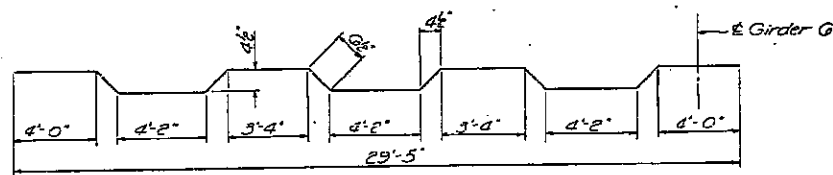
DESIGN STRESSES
F_c = 1400 psi - Super & Sub
F_s = 20000 psi - Rein.
F_s = 20000 psi - Struct.
V_c = 75 psi - Figs. 2 & 10
Allowable & 1/200 Composite
LOADING H510 & 42

PROJ. 1-55-3(3)001
COTTON HILL DR. OVER FAI RT. 55
F.A.I. ROUTE 55
SECTION 04-4-PHD
SANGAMON COUNTY
STATION 318+41.93

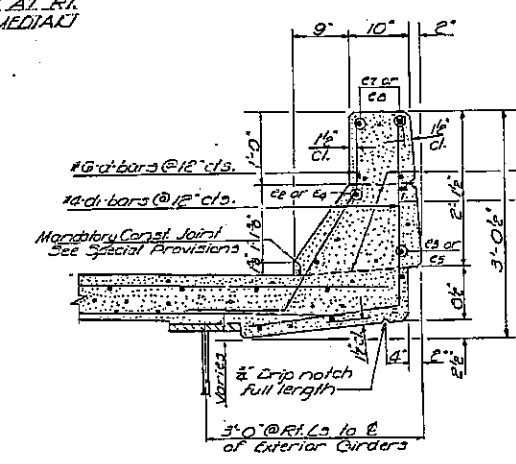
D-96-010-06
SN 084-0116
EXISTING BRIDGE PLANS
FOR INFORMATION ONLY
(NOT TO SCALE)



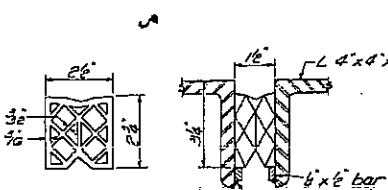
CROSS SECTION
LOOKING WEST AT RT.
ANGLES TO E. MEDIAN



CROSS SECTION - SHOWING PREFORMED JOINT SEALER



CURB SECTION



**DETAIL A
PREFORMED JOINT SEALER**

BILL OF MATERIAL

Bar	No.	Size	Length	Shape
Q	171	FG	22'-2"	
Q1	120	FG	21'-6"	
Q2	100	FG	22'-0"	
Q3	118d	FG	7'-7"	
Q4	102	FG	3'-8"	
Q5	121	FG	29'-6"	
Q6	121	FG	30'-6"	
Q7	170	FG	30'-5"	
Q10	37E	SS	3'-2"	
Q11	70	FG	24'-6"	
Q12	70	FG	22'-6"	
Q13	70	FG	20'-6"	
Q14	70	FG	18'-6"	
Q15	71	FG	16'-6"	
Q16	70	FG	23'-3"	
Q17	70	FG	21'-3"	
Q18	70	FG	21'-3"	
Q19	70	FG	19'-3"	
Q20	71	FG	17'-3"	
bp	620	SS	28'-0"	
bs	86	FG	35'-6"	
ba	153	SS	32'-6"	
d	300	FG	4'-6"	
di	300	FG	4'-3"	

Class X Concrete Coids. 4219
* Structural Steel Lbs. 493630
Reinforcement Bars Lbs. 132790
Preformed Joint Sealer Lin. Ft. 174

* Height of bearing assemblies with lead plates and anchor bolts are included as Structural Steel. Cal'd. Height = 15340 lbs..
The lengths and quantities of reinforcement and Class X Concrete in parapets are not included in above quantities. See Sheet 11.

SUPERSTRUCTURE
SHEET 55 SEC. 54-4-2HS
SALGAMON COUNTY
D.A. 31674193

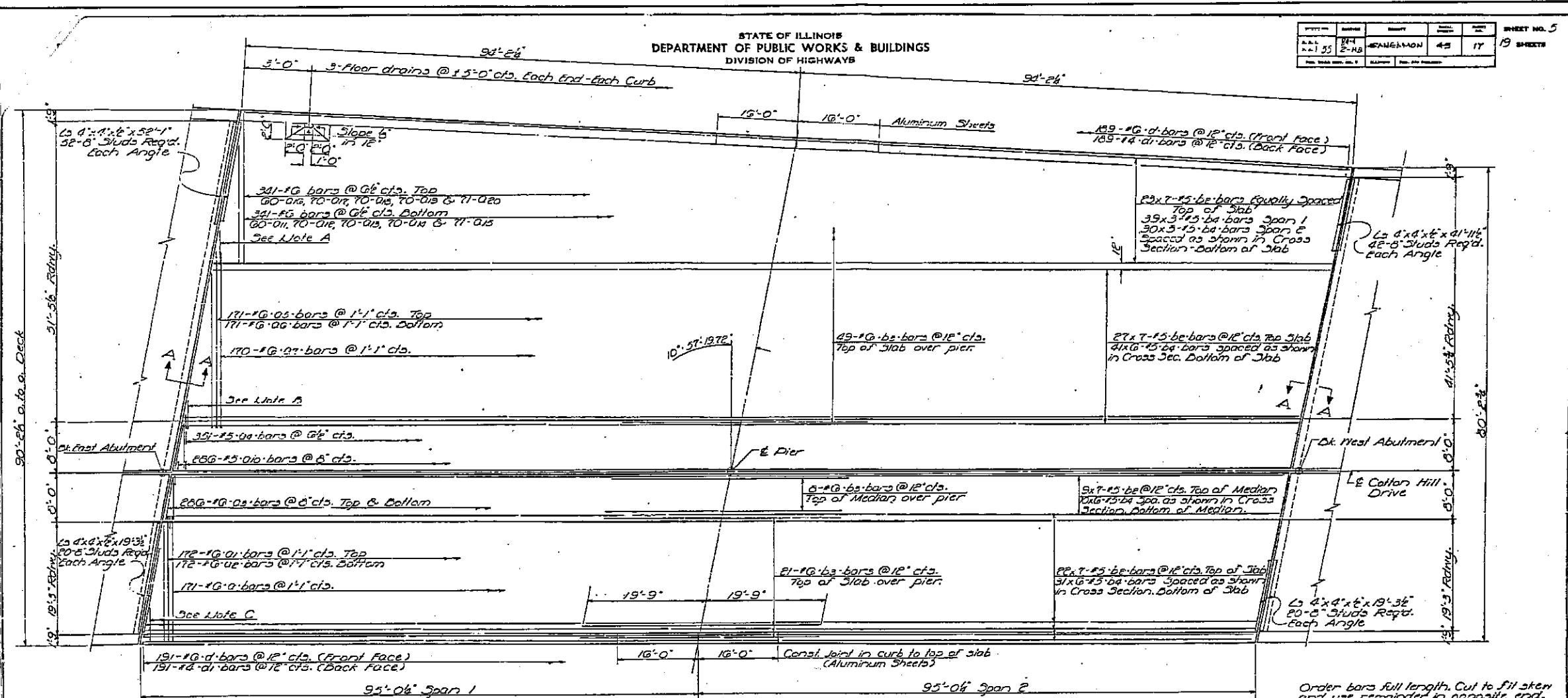
DESIGNED *C. P. Lane* JAN 15 1968
CHECKED *I. Kapur* EXAMINED *C. S. H. [Signature]*
DRAWN *Jacobs JP* PASSED *W. C. [Signature]*
CHECKED *I. K.* APPROVED *A. E. [Signature]*

D-96-010-06
SN 084-0116
EXISTING BRIDGE PLANS
FOR INFORMATION ONLY
(NOT TO SCALE)

STATE OF ILLINOIS
DEPARTMENT OF PUBLIC WORKS & BUILDINGS
DIVISION OF HIGHWAYS

PROJECT NO.	DATE	BY	NO.	SHEET NO.
114	2-18	STANGHAM	45	17
19 SHEETS				

SHEET 11 OF 13
CONTRACT 72A28



19-3"
A 1 3/4"
60-8 3/4"
95-02
19-3/4"
19-3/4"
2 5/8"

PLAN

See Detail A Sheet #0

3/8" x 6" CR1020 STL granular or solid flux filled headed studs, automatically end welded. (Alternate at 1'-0" cfs.)

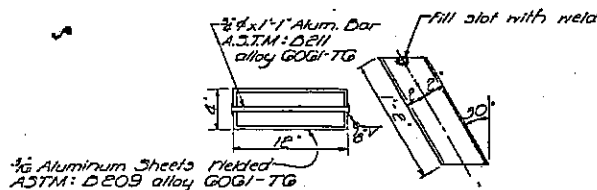
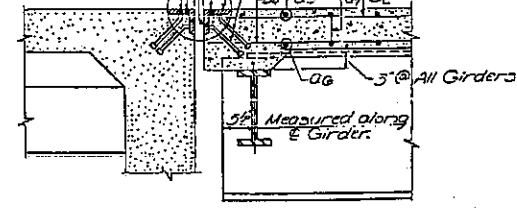
L 4"x4"x6" Fabricate to fit crown bars

5" @ All Girders

5" Measured along G Girder.

1/8" holes at 12" cfs. for 3/8" bolts set on 2" gage line. All bolts shall be burned, sanded or clipped off flush with the back of angles after forms are removed.

1/8" vent holes of 12" dia. set on 15" gage line 12" at 50' F.



Order bars full length. Cut to fit skew and use remainder in opposite end.

Note A: 10-#6-08-bars @ 6" cfs. Top

Note B: 10-#6-08-bars @ 6" cfs. Bottom

Note C: 8-#6-01-bars @ 6" cfs. Top
8-#6-02-bars @ 6" cfs. Bottom

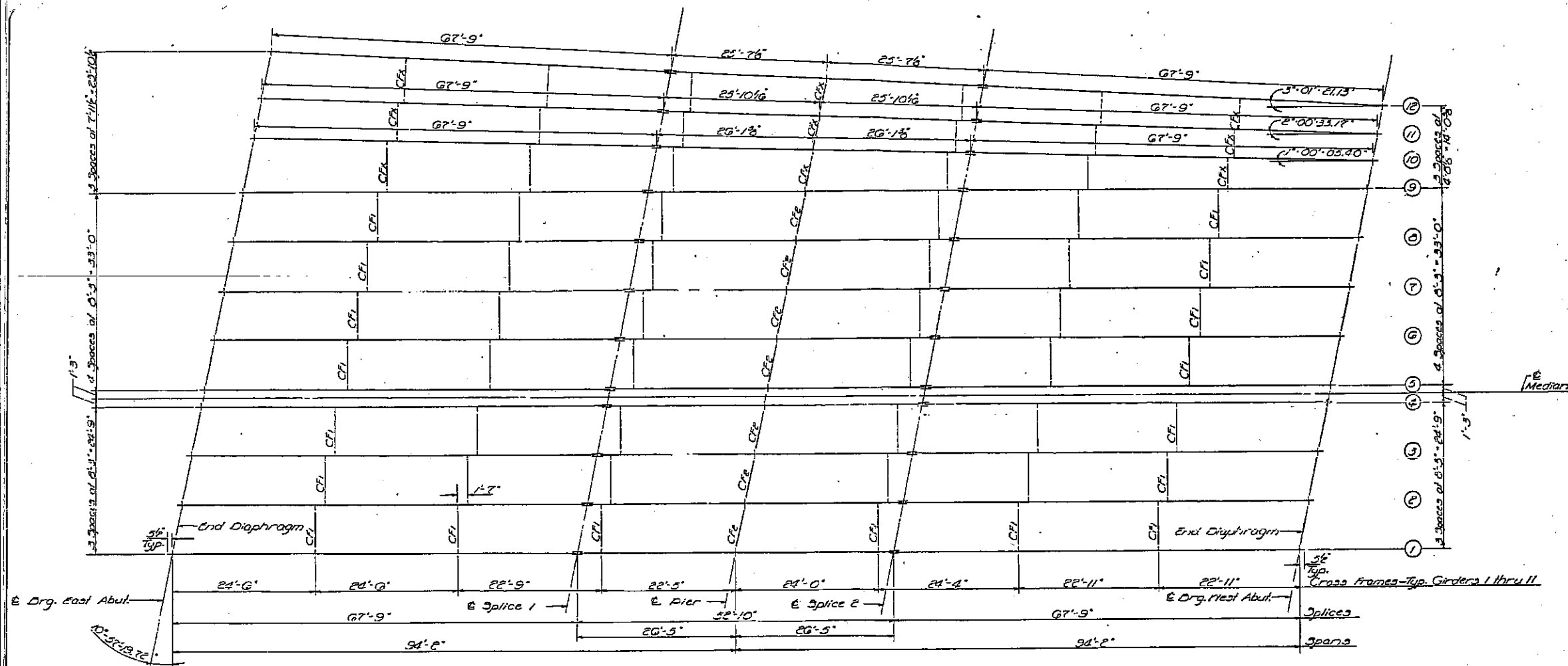
Bars indicated thus 20x3-#5 etc. indicates 20 lines of bars with 3 lengths per line.

Mark this sheet with sheet #0.

DESIGNED	James M. Russ	EXAMINED	JAN 15 1968
CHECKED	J. Kasper	PASSED	[Signature]
DRAWN	Jacobs JP	APPROVED	[Signature]
CHECKED	JK		

SUPERSTRUCTURE
F.A.T. RT. 55 SEC. 04-4-2HB
SAUGAMOU COUNTY
STA. 318 + 41.93

D-96-010-06
SN 084-0116
EXISTING BRIDGE PLANS
FOR INFORMATION ONLY
(NOT TO SCALE)



GIRDER LAYOUT

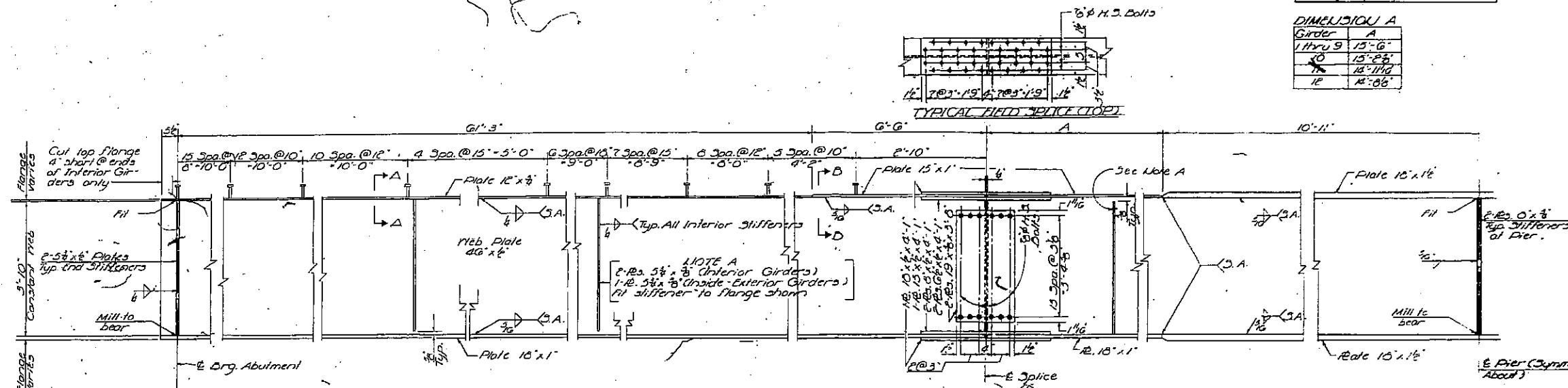
DESIGNED	James M. Pence	EXAMINED	Jan 15 1968
CHECKED	James H. Haring	DRAWN	jacobs JP
DRAWN	jacobs JP	APPROVED	V. E. Hoff
CHECKED	JW		

GIRDER LAYOUT
FAT RT. 55 SEC. 64-4-2HD
SANGAMON COUNTY
STA. 318 + 41.93

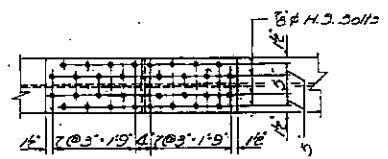
D-96-010-06
SN 084-0116
EXISTING BRIDGE PLANS
FOR INFORMATION ONLY
(NOT TO SCALE)

DIMENSION A

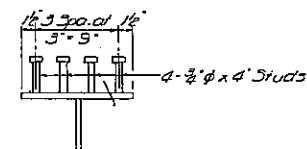
Girder	A
1 thru 9	13'-6"
10	13'-2 1/2"
11	13'-11 1/4"
12	14'-06"



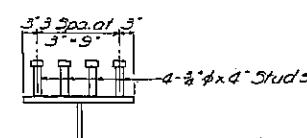
ELEVATION, TYPICAL GIRDER



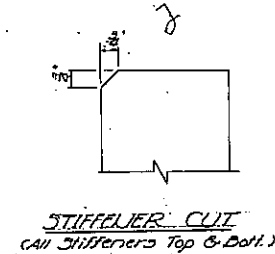
TYPICAL FIELD SPICE (BOTTOM)



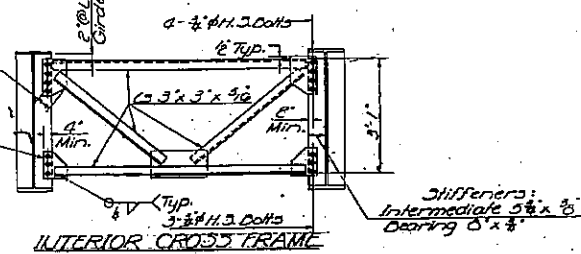
SEC. A-A



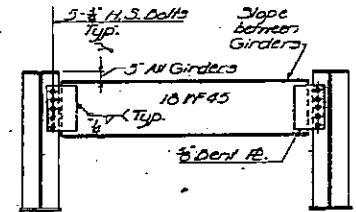
SEC. B-B



STIFFENER CUT
(All Stiffeners Top & Bottom)



INTERIOR CROSS FRAME
CF1 - CF2 - CF3



GRID DIAPHRAGM

ELEVATIONS TOP OF WEBS

Girder	1	2	3	4	5	6	7	8	9	10	11	12
E Drq. E Abut.	608.744	608.878	608.000	609.132	609.449	609.023	608.897	608.763	608.613	608.210	607.993	607.683
E Splice I	608.856	608.990	609.120	609.244	609.249	609.125	608.997	608.863	608.713	608.438	608.213	607.956
E Pier	608.864	608.998	609.128	609.252	609.253	609.129	609.001	608.867	608.717	608.443	608.218	607.961
E Splice E	608.873	609.007	609.137	609.261	609.257	609.133	609.005	608.871	608.721	608.447	608.222	607.965
E Drq. N. Abut.	608.807	608.941	609.071	609.195	609.129	609.003	608.867	608.733	608.643	608.303	608.278	608.153

DESIGNED: James M. Pance
CHECKED: James Hartung
DRAWN: Jacobs
CHECKED: J.W.
EXAMINED: C.R. Hummer
PASSED: H.E. Brumman
APPROVED: V.C. Jeff
JAN 15 1968

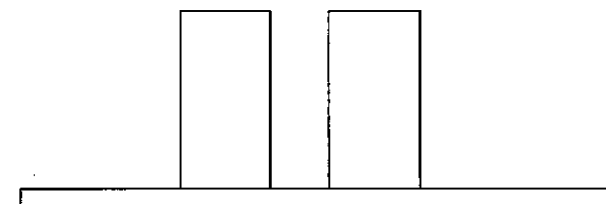
STRUCTURAL STEEL
FABRICATED BY
SANGAMON COUNTY
JAN 15 1968

D-96-010-06
SN 084-0116
EXISTING BRIDGE PLANS
FOR INFORMATION ONLY
(NOT TO SCALE)

F.A.P. RTE.	SECTION	COUNTY	TOTAL SHEETS	SHEET NO.
55	D6 PAINT	SANGAMON	13A	13A
STA. _____		TO STA. _____		
FED. ROAD DIST. NO. _____		ILLINOIS FED. AID PROJECT		

CONTRACT 72A28

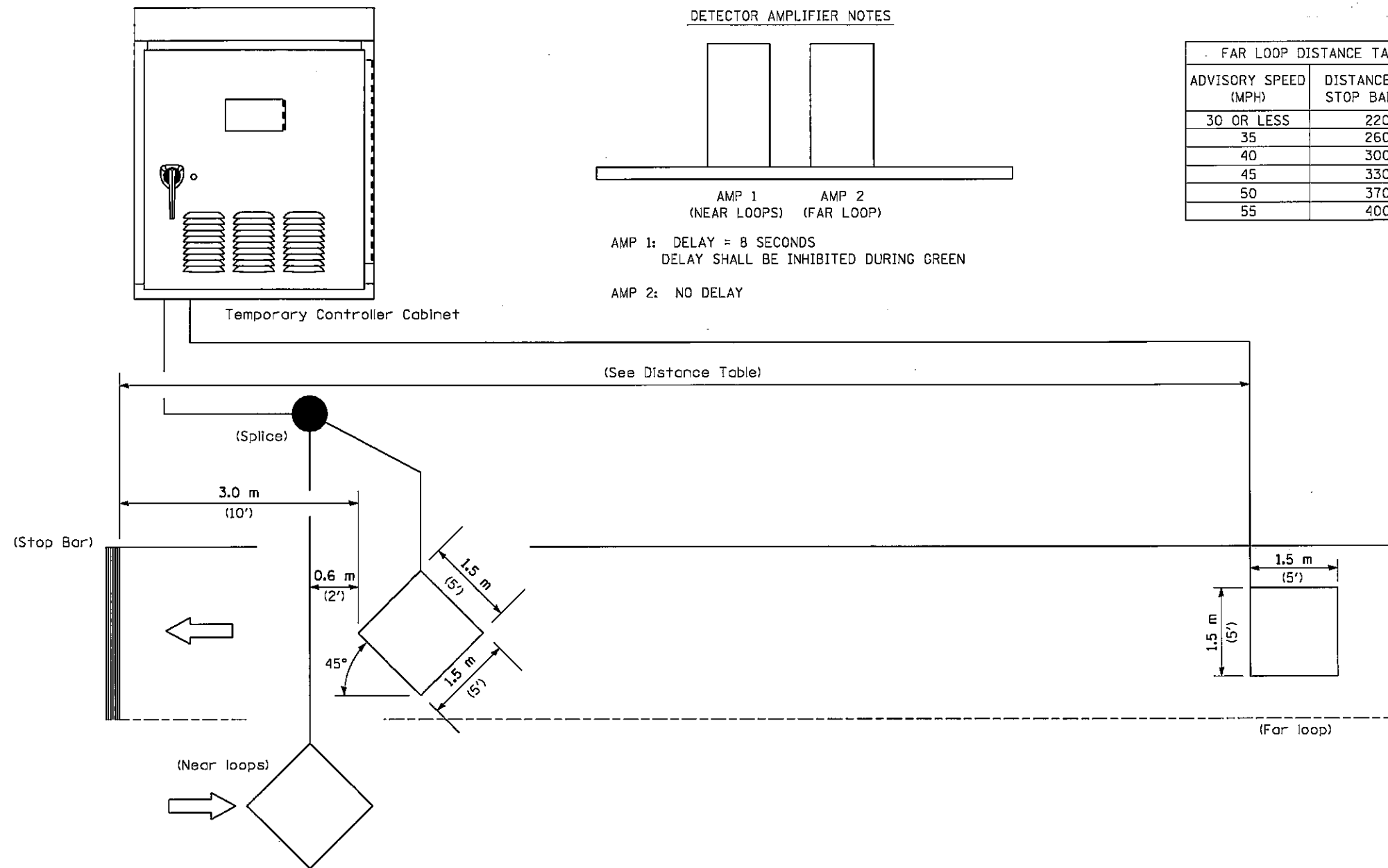
DETECTOR AMPLIFIER NOTES



AMP 1: DELAY = 8 SECONDS
 DELAY SHALL BE INHIBITED DURING GREEN

AMP 2: NO DELAY

ADVISORY SPEED (MPH)	DISTANCE FROM STOP BAR (FT.)
30 OR LESS	220
35	260
40	300
45	330
50	370
55	400



NOTE: All loops centered in lane.

INDUCTION LOOP DETECTOR

REVISIONS	
NAME	DATE

ILLINOIS DEPARTMENT OF TRANSPORTATION
 TEMPORARY BRIDGE TRAFFIC SIGNAL
 LOOP PLACEMENT DETAIL SHEET

DRAWN BY KDA
 CHECKED BY
 DATE

BRIDGE-TEMP.DGN
 DATE: JUNE 16, 2004