

F.A. RTE.	SECTION	COUNTY	TOTAL SHEETS	SHEET NO.
103	27-1R	ST. CLAIR	382	21
STA.		TO STA.		

FED. ROAD DIST. NO. ILLINOIS FED. AID PROJECT

CONTRACT NO. 76300

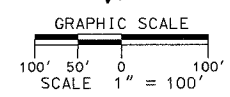
ACCESS ROAD LEFT 1A

EASTBOUND EOP
 PROP. CURVE BGN1
 PI STA. = 161+45.95
 $\Delta = 2^\circ 22' 07''$ (RT)
 $D = 1^\circ 10' 22''$
 $R = 4,885.36'$
 $T = 101.00'$
 $L = 201.97'$
 $E = 1.04'$
 $\theta = 3.10\%$
 $T.R. = 18'$
 $S.E. RUN = 123'$
 $P.C. STA. = 160+44.95$
 $P.T. STA. = 162+46.92$

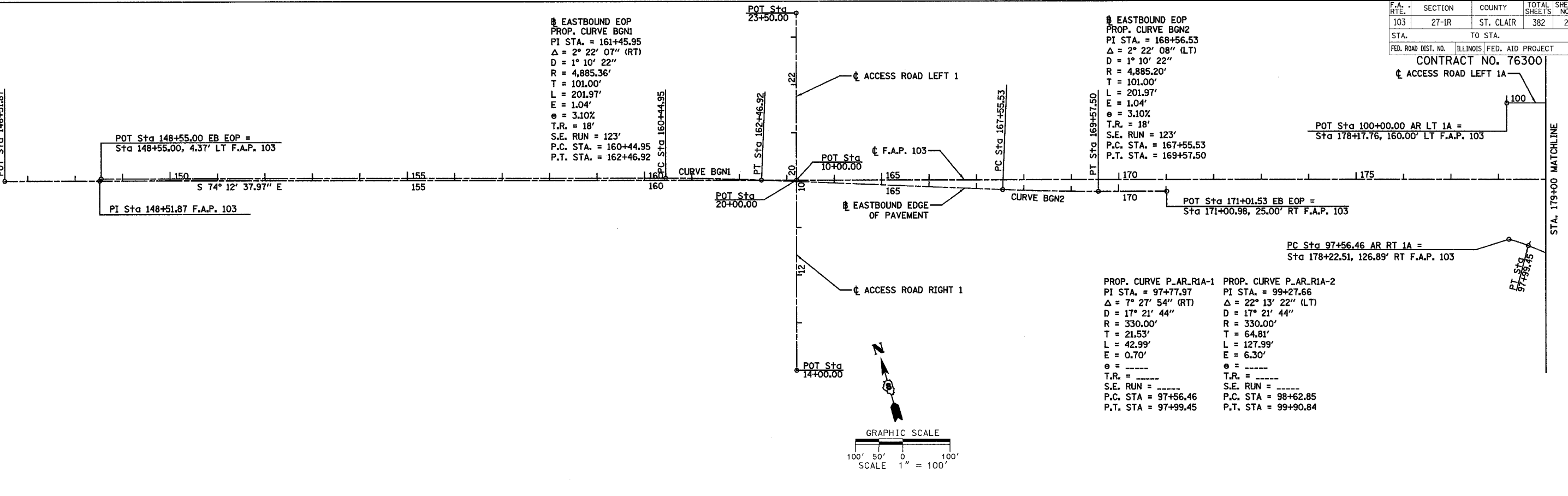
EASTBOUND EOP
 PROP. CURVE BGN2
 PI STA. = 168+56.53
 $\Delta = 2^\circ 22' 08''$ (LT)
 $D = 1^\circ 10' 22''$
 $R = 4,885.20'$
 $T = 101.00'$
 $L = 201.97'$
 $E = 1.04'$
 $\theta = 3.10\%$
 $T.R. = 18'$
 $S.E. RUN = 123'$
 $P.C. STA. = 167+55.53$
 $P.T. STA. = 169+57.50$

PROP. CURVE P_AR_R1A-1
 PI STA. = 97+77.97
 $\Delta = 7^\circ 27' 54''$ (RT)
 $D = 17^\circ 21' 44''$
 $R = 330.00'$
 $T = 21.53'$
 $L = 42.99'$
 $E = 0.70'$
 $\theta =$
 $T.R. =$
 $S.E. RUN =$
 $P.C. STA. = 97+56.46$
 $P.T. STA. = 97+99.45$

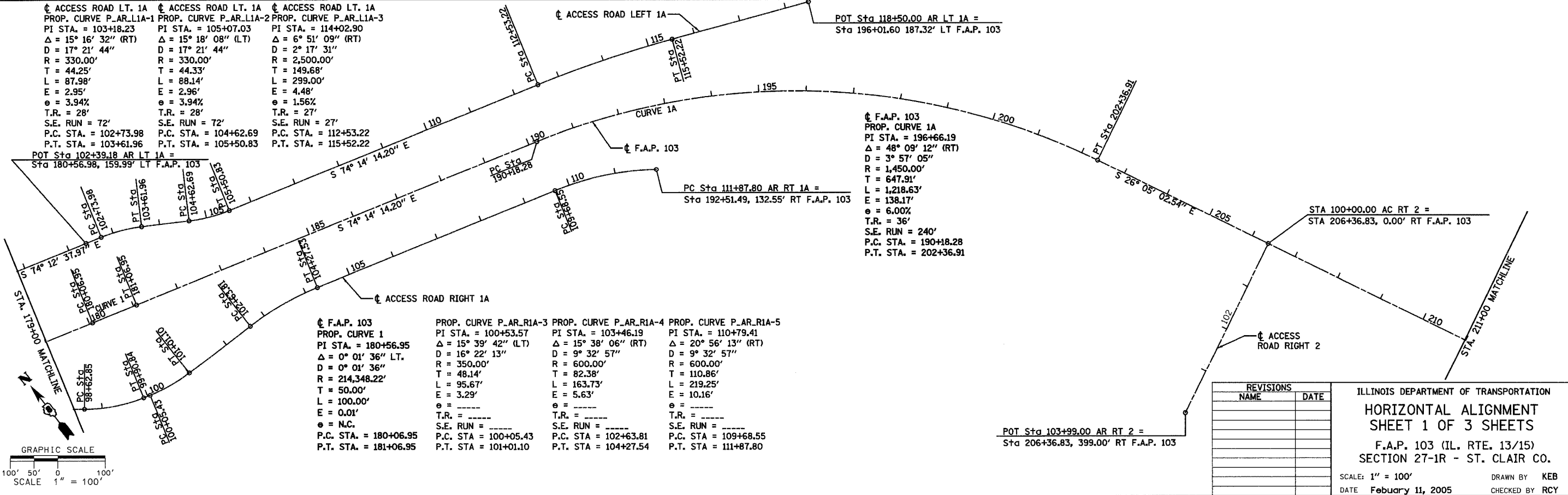
PROP. CURVE P_AR_R1A-2
 PI STA. = 99+27.66
 $\Delta = 22^\circ 13' 22''$ (LT)
 $D = 17^\circ 21' 44''$
 $R = 330.00'$
 $T = 64.81'$
 $L = 127.99'$
 $E = 6.30'$
 $\theta =$
 $T.R. =$
 $S.E. RUN =$
 $P.C. STA. = 98+62.85$
 $P.T. STA. = 99+90.84$



DATE	
BY	
CHECKED	
DATE	
BY	
CHECKED	
DATE	
BY	
CHECKED	



DATE	
BY	
CHECKED	
DATE	
BY	
CHECKED	
DATE	
BY	
CHECKED	



REVISIONS	
NAME	DATE

ILLINOIS DEPARTMENT OF TRANSPORTATION
HORIZONTAL ALIGNMENT
SHEET 1 OF 3 SHEETS
 F.A.P. 103 (IL. RTE. 13/15)
 SECTION 27-1R - ST. CLAIR CO.
 SCALE: 1" = 100'
 DATE February 11, 2005
 DRAWN BY KEB
 CHECKED BY RCY

J:\2002-020958\0001\civil\plan\horiz_align_103.dgn 3/9/2005 10:46:02 AM