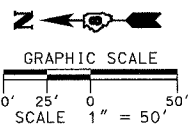
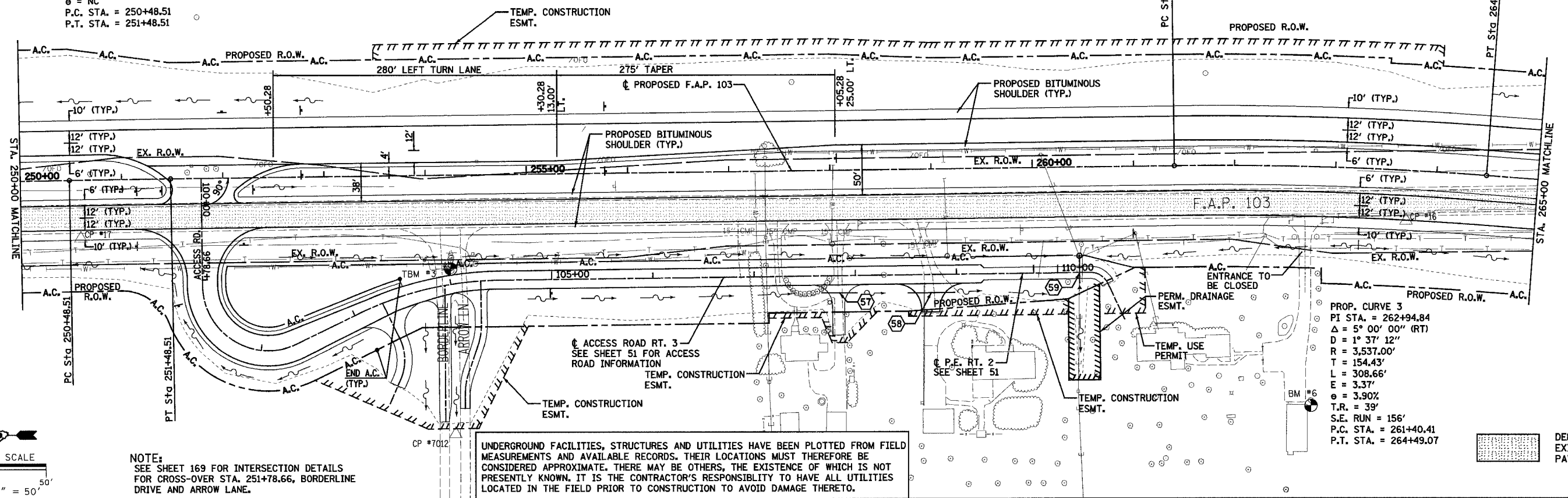


PROP. CURVE 2A
 PI STA. = 250+98.51
 $\Delta = 0^\circ 16' 54''$ (RT)
 $D = 0^\circ 16'$
 $R = 20,343.$
 $T = 50.00'$
 $L = 100.00'$
 $E = 0.06'$
 $\epsilon = NC$
 P.C. STA. = 250+48.51
 P.T. STA. = 251+48.51

F.A.P. RTE.	SECTION	COUNTY	TOTAL SHEETS	SHEET NO.
103	27-1R	ST. CLAIR	382	32
STA. 250+00.00		TO STA. 265+00.00		
FED. ROAD DIST. NO. ILLINOIS FED. AID PROJECT				

CONTRACT NO. 76300

DATE: _____ BY: _____
 PLAN: _____
 CHECKED: _____
 APPROVED: _____
 TITLE: _____
 NO.: _____



NOTE:
 SEE SHEET 169 FOR INTERSECTION DETAILS
 FOR CROSS-OVER STA. 251+78.66, BORDERLINE
 DRIVE AND ARROW LANE.

UNDERGROUND FACILITIES, STRUCTURES AND UTILITIES HAVE BEEN PLOTTED FROM FIELD MEASUREMENTS AND AVAILABLE RECORDS. THEIR LOCATIONS MUST THEREFORE BE CONSIDERED APPROXIMATE. THERE MAY BE OTHERS, THE EXISTENCE OF WHICH IS NOT PRESENTLY KNOWN. IT IS THE CONTRACTOR'S RESPONSIBILITY TO HAVE ALL UTILITIES LOCATED IN THE FIELD PRIOR TO CONSTRUCTION TO AVOID DAMAGE THERETO.

TBM #3 - FOUND R.R. SPIKE IN POWERPOLE w/GUY AT CORNER OF ILL. 13/15 AND BORDLINE DRIVE, 54.00' RT., STA. 254+28±, ELEV. 588.28

BM #6 - SET IRON ROD w/CONTROL CAP, 235.38' RT., STA. 262+81.79, ELEV. 578.53

PROP. CURVE 3
 PI STA. = 262+94.84
 $\Delta = 5^\circ 00' 00''$ (RT)
 $D = 1^\circ 37' 12''$
 $R = 3,537.00'$
 $T = 154.43'$
 $L = 308.66'$
 $E = 3.37'$
 $\epsilon = 3.90\%$
 $T.R. = 39'$
 S.E. RUN = 156'
 P.C. STA. = 261+40.41
 P.T. STA. = 264+49.07

⬤ DENOTES EXISTING PAVEMENT

