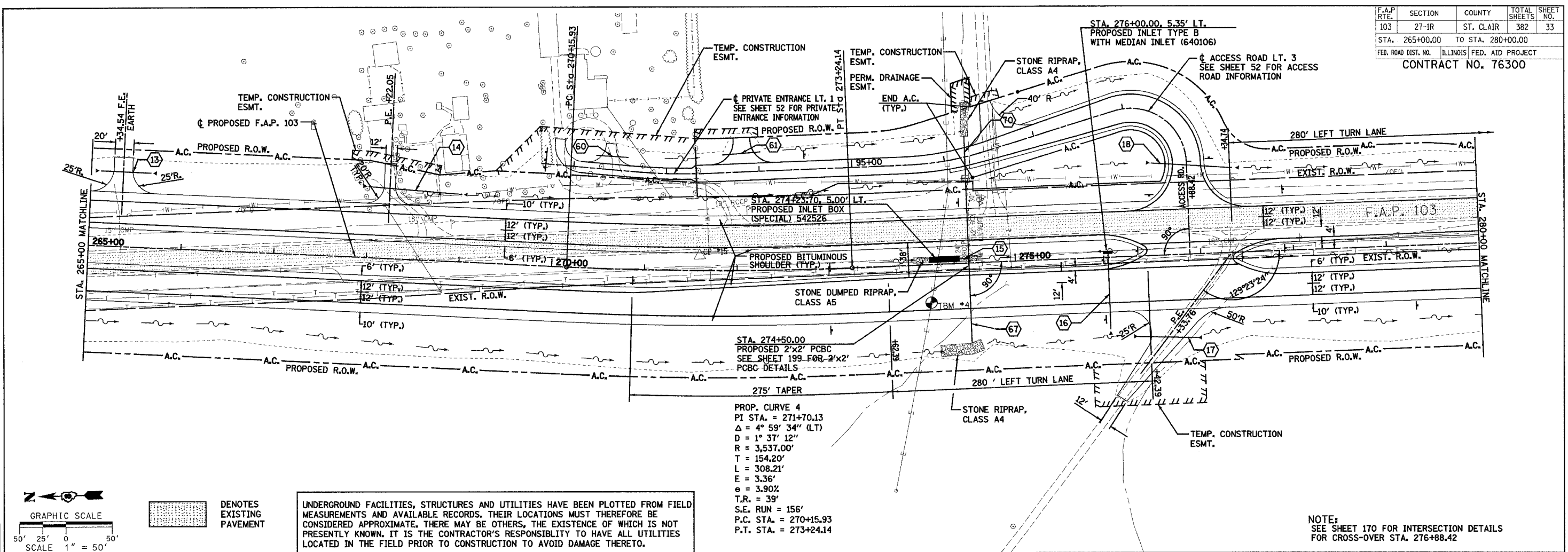
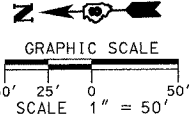


F.A.P. RTE.	SECTION	COUNTY	TOTAL SHEETS	SHEET NO.
103	27-1R	ST. CLAIR	382	33
STA. 265+00.00		TO STA. 280+00.00		
FED. ROAD DIST. NO.		ILLINOIS	FED. AID PROJECT	CONTRACT NO. 76300

DATE	BY	DATE	BY
PLAN	SURVEYED	DATE	BY
	NOTE BOOK		
	ALIGNMENT CHECKED		
	GRADES CHECKED		
	PLANNING NOTES CHECKED		
	NO. NOTED		
	ADD. FILE NAME		



PROP. CURVE 4
 PI STA. = 271+70.13
 $\Delta = 4^\circ 59' 34''$ (LT)
 $D = 1^\circ 37' 12''$
 $R = 3,537.00'$
 $T = 154.20'$
 $L = 308.21'$
 $E = 3.36'$
 $e = 3.90'$
 $T.R. = 39'$
 $S.E. RUN = 156'$
 $P.C. STA. = 270+15.93$
 $P.T. STA. = 273+24.14$

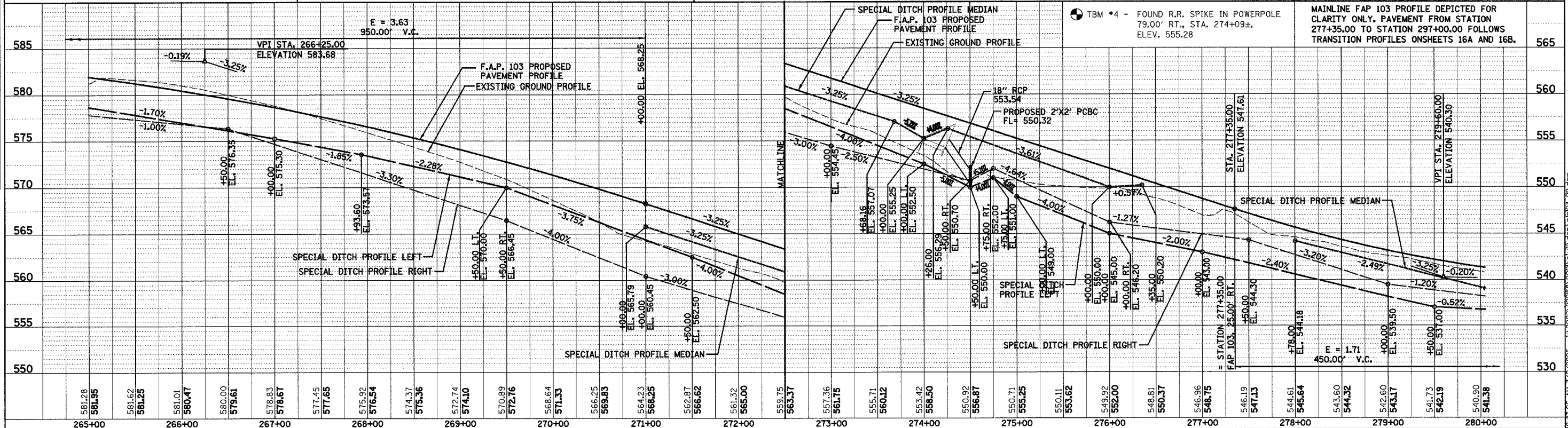


■ DENOTES EXISTING PAVEMENT

UNDERGROUND FACILITIES, STRUCTURES AND UTILITIES HAVE BEEN PLOTTED FROM FIELD MEASUREMENTS AND AVAILABLE RECORDS. THEIR LOCATIONS MUST THEREFORE BE CONSIDERED APPROXIMATE. THERE MAY BE OTHERS, THE EXISTENCE OF WHICH IS NOT PRESENTLY KNOWN. IT IS THE CONTRACTOR'S RESPONSIBILITY TO HAVE ALL UTILITIES LOCATED IN THE FIELD PRIOR TO CONSTRUCTION TO AVOID DAMAGE THERETO.

NOTE:
 SEE SHEET 170 FOR INTERSECTION DETAILS FOR CROSS-OVER STA. 276+88.42

DATE	BY	DATE	BY
PROFILE	SURVEYED	DATE	BY
	NOTE BOOK		
	GRADES CHECKED		
	PLANNING NOTES CHECKED		
	NO. NOTED		
	ADD. FILE NAME		



PLAN & PROFILE - F.A.P. 103