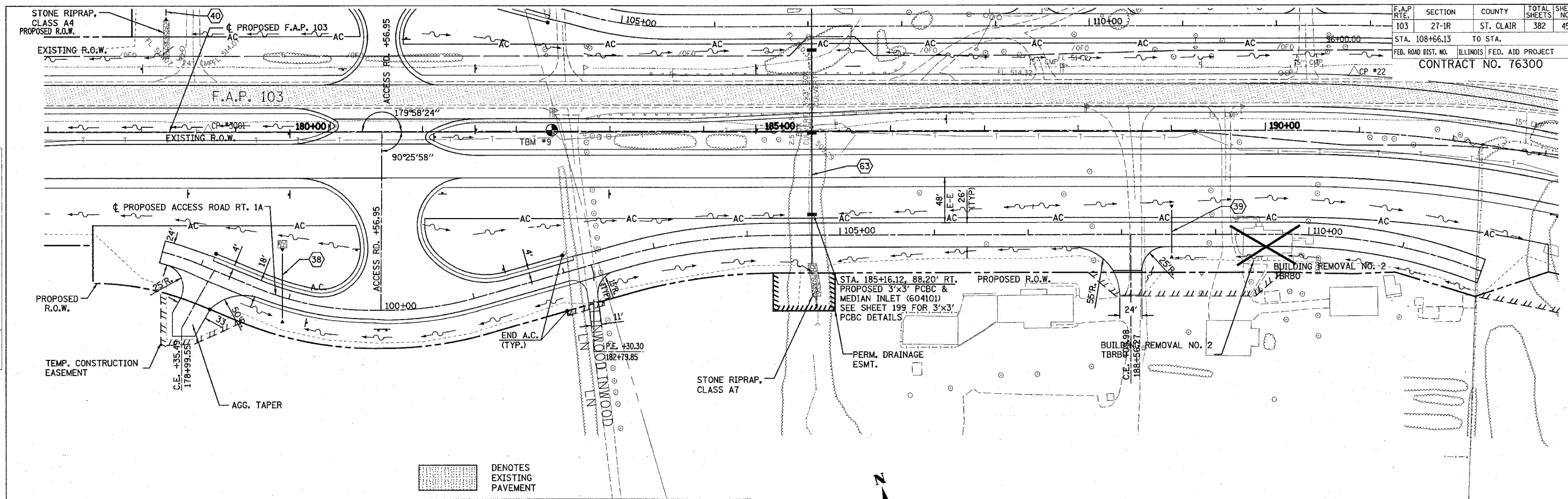
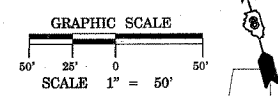


| | | | | |
|---------------------|---------|---------------------------|--------------|-----------|
| F.A.P. RTE. | SECTION | COUNTY | TOTAL SHEETS | SHEET NO. |
| 103 | 27-1R | ST. CLAIR | 382 | 45 |
| STA. 108+66.13 | | TO STA. | | |
| FED. ROAD DIST. NO. | | ILLINOIS FED. AID PROJECT | | |
| CONTRACT NO. 76300 | | | | |

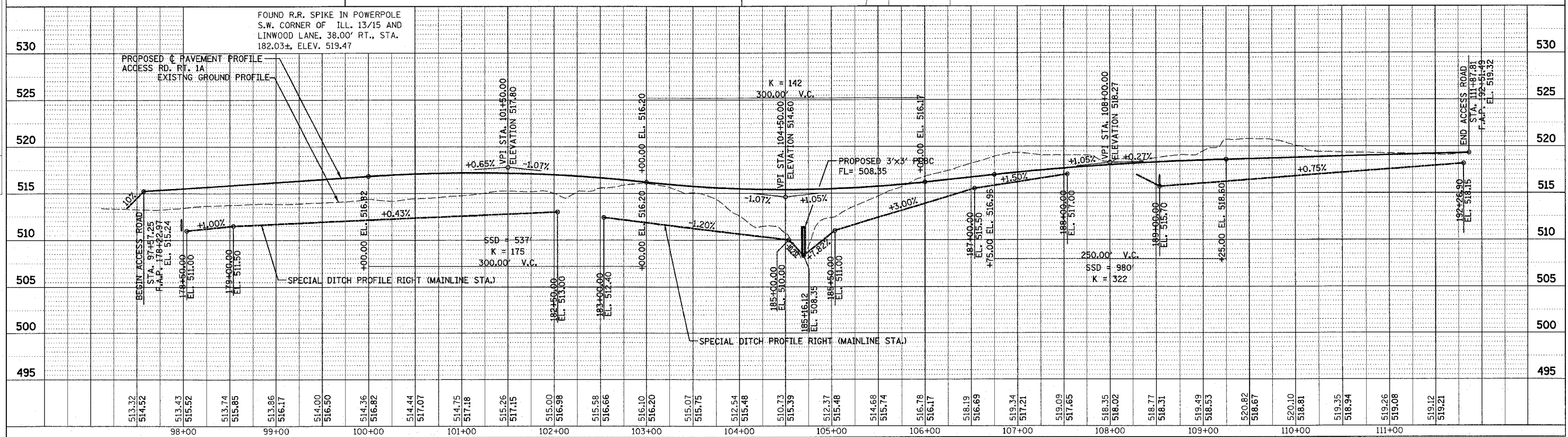


UNDERGROUND FACILITIES, STRUCTURES AND UTILITIES HAVE BEEN PLOTTED FROM FIELD MEASUREMENTS AND AVAILABLE RECORDS. THEIR LOCATIONS MUST THEREFORE BE CONSIDERED APPROXIMATE. THERE MAY BE OTHERS, THE EXISTENCE OF WHICH IS NOT PRESENTLY KNOWN. IT IS THE CONTRACTOR'S RESPONSIBILITY TO HAVE ALL UTILITIES LOCATED IN THE FIELD PRIOR TO CONSTRUCTION TO AVOID DAMAGE THERETO.



| | |
|------|----|
| DATE | BY |
| | |
| DATE | BY |
| | |
| DATE | BY |
| | |

| | |
|------|----|
| DATE | BY |
| | |
| DATE | BY |
| | |
| DATE | BY |
| | |



PLAN & PROFILE - ACCESS ROAD RT. 1A