

F.A.P. RTE.	SECTION	COUNTY	TOTAL SHEETS	SHEET NO.
103	27-IR	ST. CLAIR	382	49
STA. 85+00.00		TO STA. 101+00.00		
FED. ROAD DIST. NO. ILLINOIS FED. AID PROJECT				
CONTRACT NO. 76300				

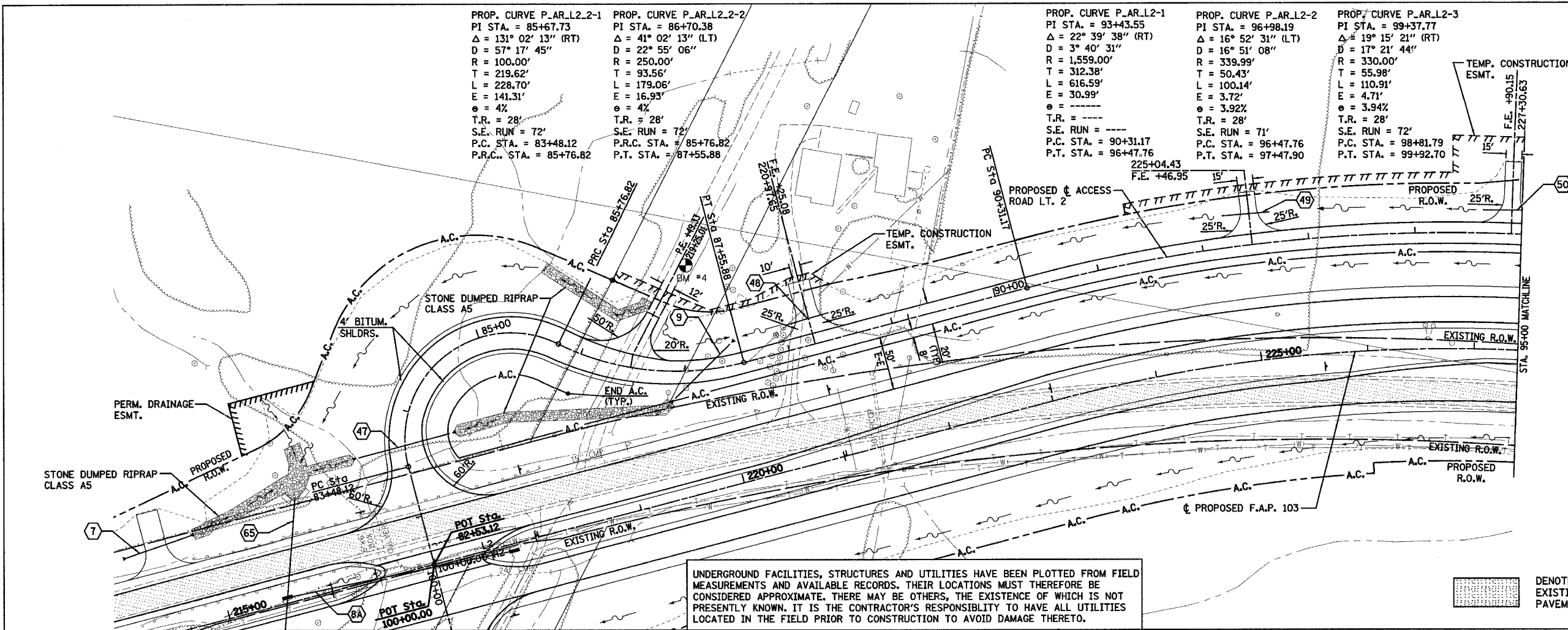
PROP. CURVE P.AR.L2.2-1  
 PI STA. = 85+67.73  
 $\Delta = 131^\circ 02' 13''$  (RT)  
 $D = 57^\circ 17' 45''$   
 $R = 100.00'$   
 $T = 219.62'$   
 $L = 228.70'$   
 $E = 141.31'$   
 $e = 4\%$   
 $T.R. = 28'$   
 $S.E. RUN = 72'$   
 $P.C. STA. = 83+48.12$   
 $P.R.C. STA. = 85+76.82$

PROP. CURVE P.AR.L2.2-2  
 PI STA. = 86+70.38  
 $\Delta = 41^\circ 02' 13''$  (LT)  
 $D = 22^\circ 55' 06''$   
 $R = 250.00'$   
 $T = 93.56'$   
 $L = 179.06'$   
 $E = 16.93'$   
 $e = 4\%$   
 $T.R. = 28'$   
 $S.E. RUN = 72'$   
 $P.R.C. STA. = 85+76.82$   
 $P.T. STA. = 87+55.88$

PROP. CURVE P.AR.L2-1  
 PI STA. = 93+43.55  
 $\Delta = 22^\circ 39' 38''$  (RT)  
 $D = 3^\circ 40' 31''$   
 $R = 1,559.00'$   
 $T = 312.38'$   
 $L = 616.59'$   
 $E = 30.99'$   
 $e = \text{---}$   
 $T.R. = \text{---}$   
 $S.E. RUN = \text{---}$   
 $P.C. STA. = 90+31.17$   
 $P.T. STA. = 96+47.76$

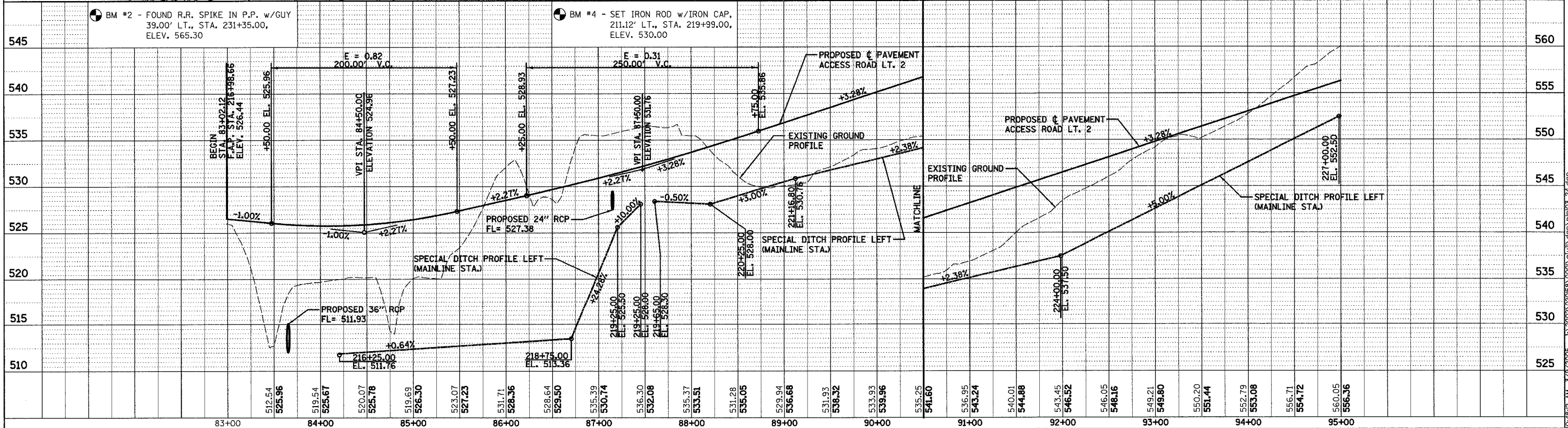
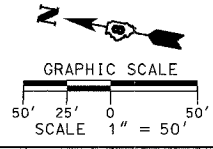
PROP. CURVE P.AR.L2-2  
 PI STA. = 96+98.19  
 $\Delta = 16^\circ 52' 31''$  (LT)  
 $D = 16^\circ 51' 08''$   
 $R = 339.99'$   
 $T = 50.43'$   
 $L = 100.14'$   
 $E = 3.72'$   
 $e = 3.92\%$   
 $T.R. = 28'$   
 $S.E. RUN = 71'$   
 $P.C. STA. = 96+47.76$   
 $P.T. STA. = 97+47.90$

PROP. CURVE P.AR.L2-3  
 PI STA. = 99+37.77  
 $\Delta = 19^\circ 15' 21''$  (RT)  
 $D = 17^\circ 21' 44''$   
 $R = 330.00'$   
 $T = 55.98'$   
 $L = 110.91'$   
 $E = 4.71'$   
 $e = 3.94\%$   
 $T.R. = 28'$   
 $S.E. RUN = 72'$   
 $P.C. STA. = 98+81.79$   
 $P.T. STA. = 99+92.70$



UNDERGROUND FACILITIES, STRUCTURES AND UTILITIES HAVE BEEN PLOTTED FROM FIELD MEASUREMENTS AND AVAILABLE RECORDS. THEIR LOCATIONS MUST THEREFORE BE CONSIDERED APPROXIMATE. THERE MAY BE OTHERS, THE EXISTENCE OF WHICH IS NOT PRESENTLY KNOWN. IT IS THE CONTRACTOR'S RESPONSIBILITY TO HAVE ALL UTILITIES LOCATED IN THE FIELD PRIOR TO CONSTRUCTION TO AVOID DAMAGE THERETO.

DENOTES EXISTING PAVEMENT



PLAN & PROFILE - ACCESS ROAD LT. 2

PLAN  
 SURVEYED  
 GRADES CHECKED  
 ALIGNED CHECKED  
 NOTE BOOK NO.  
 DATE

PROFILE  
 SURVEYED  
 GRADES CHECKED  
 ALIGNED CHECKED  
 NOTE BOOK NO.  
 DATE

10:46:21 AM 3/7/2005 J:\2002\02058\000\gvt\gvt\gvt\plan\03\_24.dgn