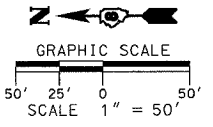


PROP. CURVE P_AR_R3-1
 PI STA. = 102+08.36
 $\Delta = 115^\circ 19' 24''$ (LT)
 $D = 88^\circ 08' 50''$
 $R = 65.00'$
 $T = 102.67'$
 $L = 130.83'$
 $E = 56.51'$
 $\theta = 4.00\%$
 $T.R. = 28'$
 $S.E. RUN = 73'$
 P.C. STA. = 101+05.69
 P.T. STA. = 102+36.52

PROP. CURVE P_AR_R3-2
 PI STA. = 103+77.85
 $\Delta = 25^\circ 19' 23''$ (RT)
 $D = 17^\circ 21' 44''$
 $R = 330.00'$
 $T = 74.14'$
 $L = 145.85'$
 $E = 8.22'$
 $\theta = 3.94\%$
 $T.R. = 28'$
 $S.E. RUN = 72'$
 P.C. STA. = 103+03.72
 P.T. STA. = 104+49.57



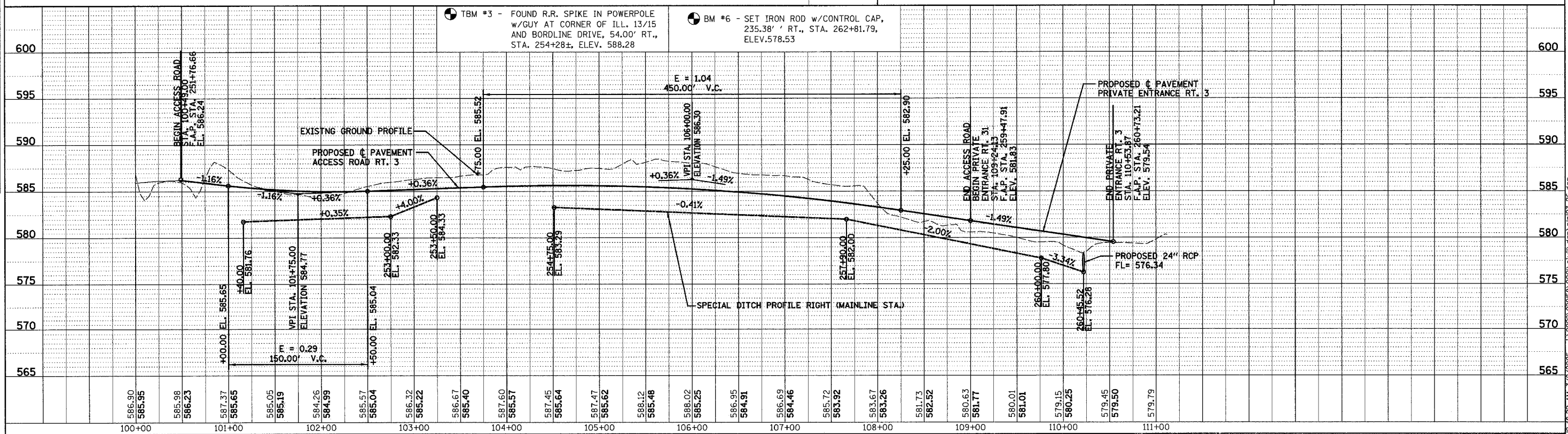
NOTE:
 SEE SHEET 169 FOR INTERSECTION
 DETAIL FOR BORDERLINE DRIVE
 AND ARROW LANE

UNDERGROUND FACILITIES, STRUCTURES AND UTILITIES HAVE BEEN PLOTTED FROM FIELD MEASUREMENTS AND AVAILABLE RECORDS. THEIR LOCATIONS MUST THEREFORE BE CONSIDERED APPROXIMATE. THERE MAY BE OTHERS, THE EXISTENCE OF WHICH IS NOT PRESENTLY KNOWN. IT IS THE CONTRACTOR'S RESPONSIBILITY TO HAVE ALL UTILITIES LOCATED IN THE FIELD PRIOR TO CONSTRUCTION TO AVOID DAMAGE THERETO.

■ DENOTES EXISTING PAVEMENT

● TBM #3 - FOUND R.R. SPIKE IN POWERPOLE W/GUY AT CORNER OF ILL. 13/15 AND BORDERLINE DRIVE, 54.00' RT., STA. 254+28±, ELEV. 588.28

● BM #6 - SET IRON ROD W/CONTROL CAP, 235.38' RT., STA. 262+81.79, ELEV. 578.53



PLAN & PROFILE - ACCESS ROAD RT. 3

PLAN
 SURVEYED BY: _____ DATE: _____
 NOTE BOOK NO. _____
 ALIGNMENT CHECKED BY: _____
 GRADES CHECKED BY: _____
 CADD FILE NAME: _____

PROFILE
 SURVEYED BY: _____ DATE: _____
 NOTE BOOK NO. _____
 GRADES CHECKED BY: _____
 ELEVATIONS CHECKED BY: _____

10:46:22 AM 3/7/2005 J:\2002\020158\0001\civil\dm\p103-26.dgn