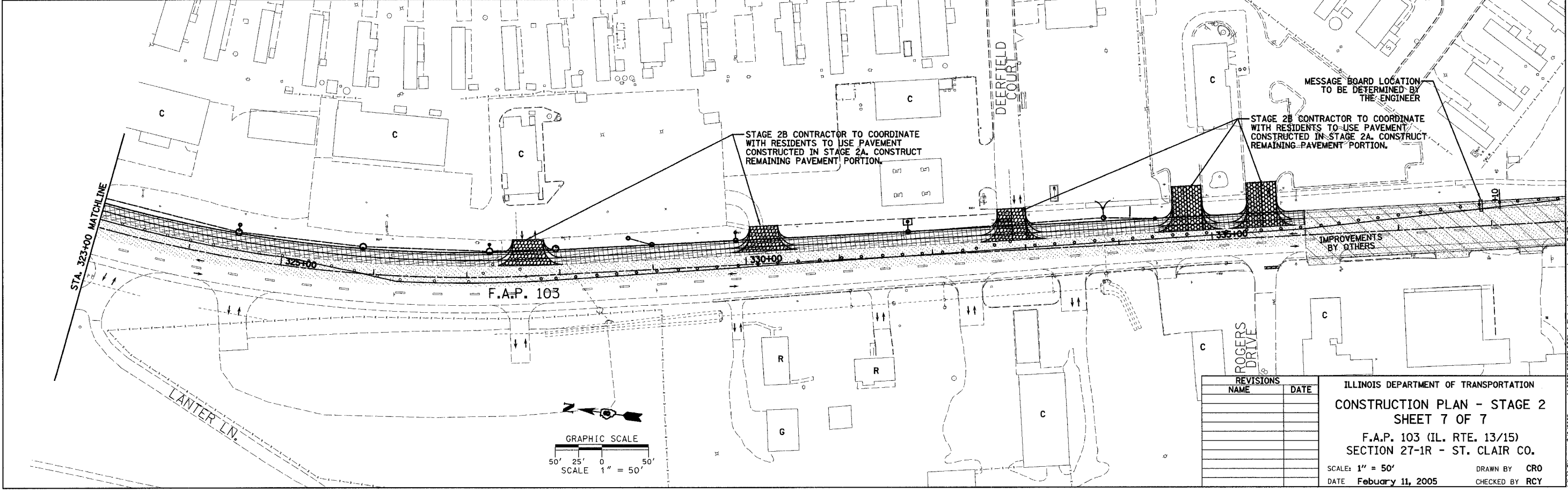
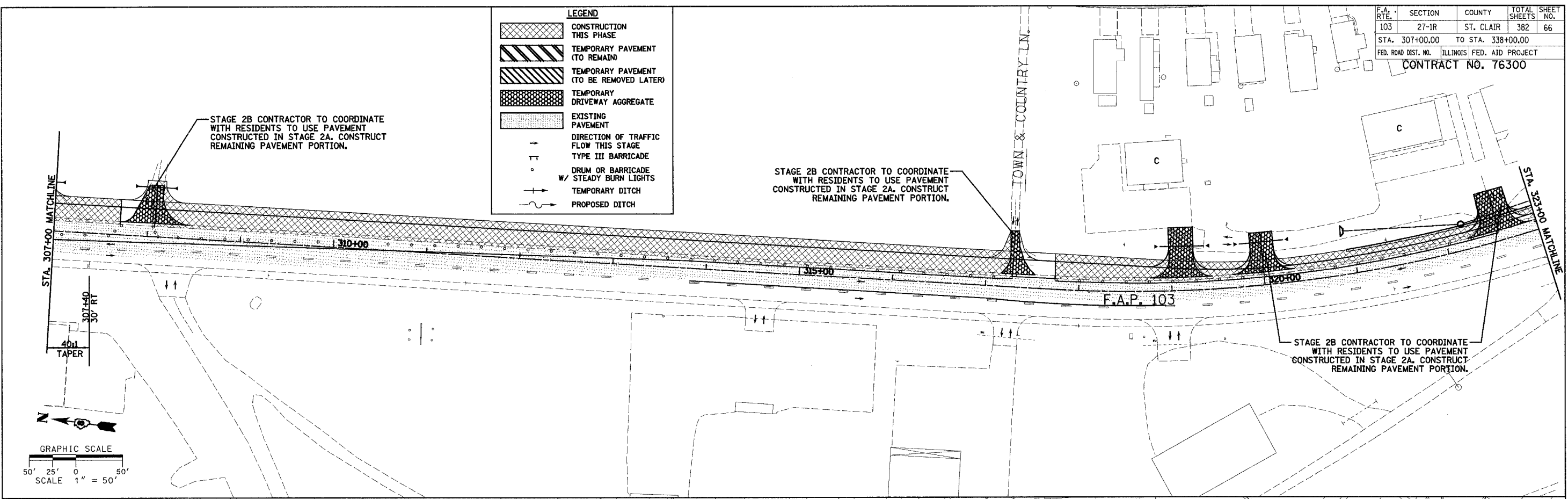


F.A. RTE.	SECTION	COUNTY	TOTAL SHEETS	SHEET NO.
103	27-1R	ST. CLAIR	382	66
STA. 307+00.00		TO STA. 338+00.00		
FED. ROAD DIST. NO. ILLINOIS FED. AID PROJECT				
CONTRACT NO. 76300				

LEGEND

	CONSTRUCTION THIS PHASE
	TEMPORARY PAVEMENT (TO REMAIN)
	TEMPORARY PAVEMENT (TO BE REMOVED LATER)
	TEMPORARY DRIVEWAY AGGREGATE
	EXISTING PAVEMENT
	DIRECTION OF TRAFFIC FLOW THIS STAGE
	TYPE III BARRICADE
	DRUM OR BARRICADE W/ STEADY BURN LIGHTS
	TEMPORARY DITCH
	PROPOSED DITCH



REVISIONS	NAME	DATE

ILLINOIS DEPARTMENT OF TRANSPORTATION
CONSTRUCTION PLAN - STAGE 2
SHEET 7 OF 7
 F.A.P. 103 (IL. RTE. 13/15)
 SECTION 27-1R - ST. CLAIR CO.
 SCALE: 1" = 50'
 DATE February 11, 2005
 DRAWN BY CRO
 CHECKED BY RCY

DATE	
BY	
PLAN	
SURVEYED	
NOTE BOOK	
ALIGNED CHECKED	
RT. OF WAY CHECKED	
NO. 1	
NO. 2	
NO. 3	
NO. 4	
NO. 5	
NO. 6	
NO. 7	
NO. 8	
NO. 9	
NO. 10	

DATE	
BY	
PLAN	
SURVEYED	
NOTE BOOK	
ALIGNED CHECKED	
RT. OF WAY CHECKED	
NO. 1	
NO. 2	
NO. 3	
NO. 4	
NO. 5	
NO. 6	
NO. 7	
NO. 8	
NO. 9	
NO. 10	

J:\2002\02095R\0001\civil\stage2\stage2.dwg 3/9/2005 4:44 PM