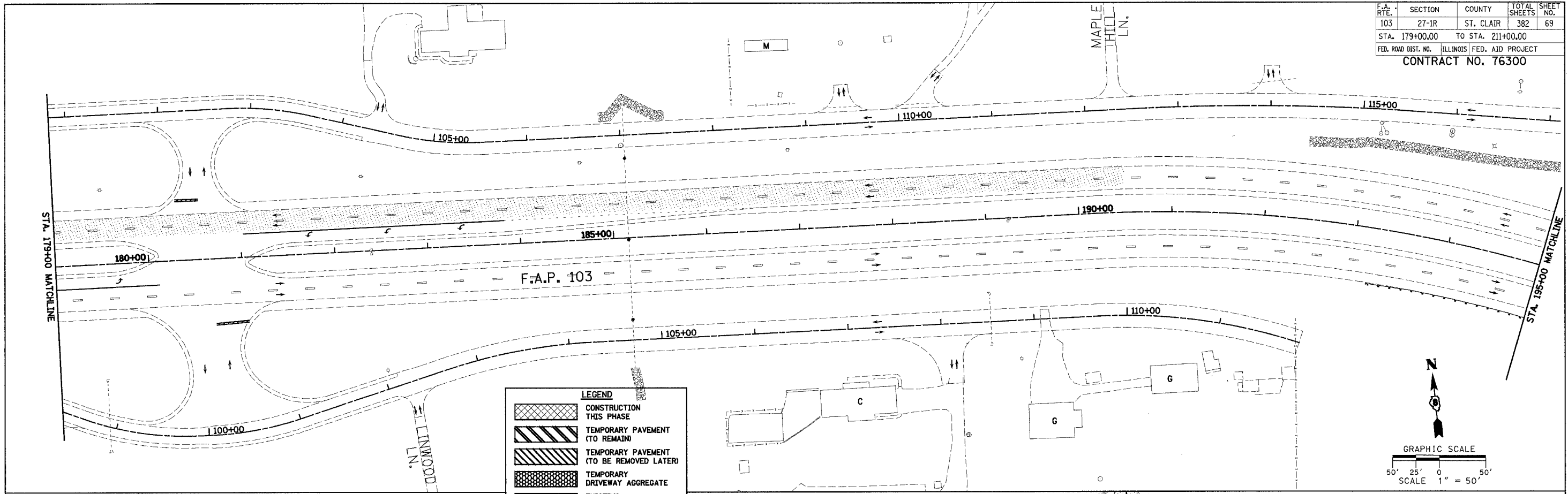


F.A. RTE.	SECTION	COUNTY	TOTAL SHEETS	SHEET NO.
103	27-1R	ST. CLAIR	382	69
STA. 179+00.00 TO STA. 211+00.00				
FED. ROAD DIST. NO. ILLINOIS FED. AID PROJECT				
CONTRACT NO. 76300				

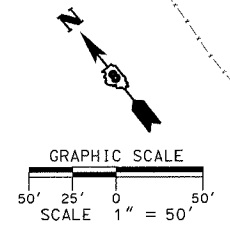
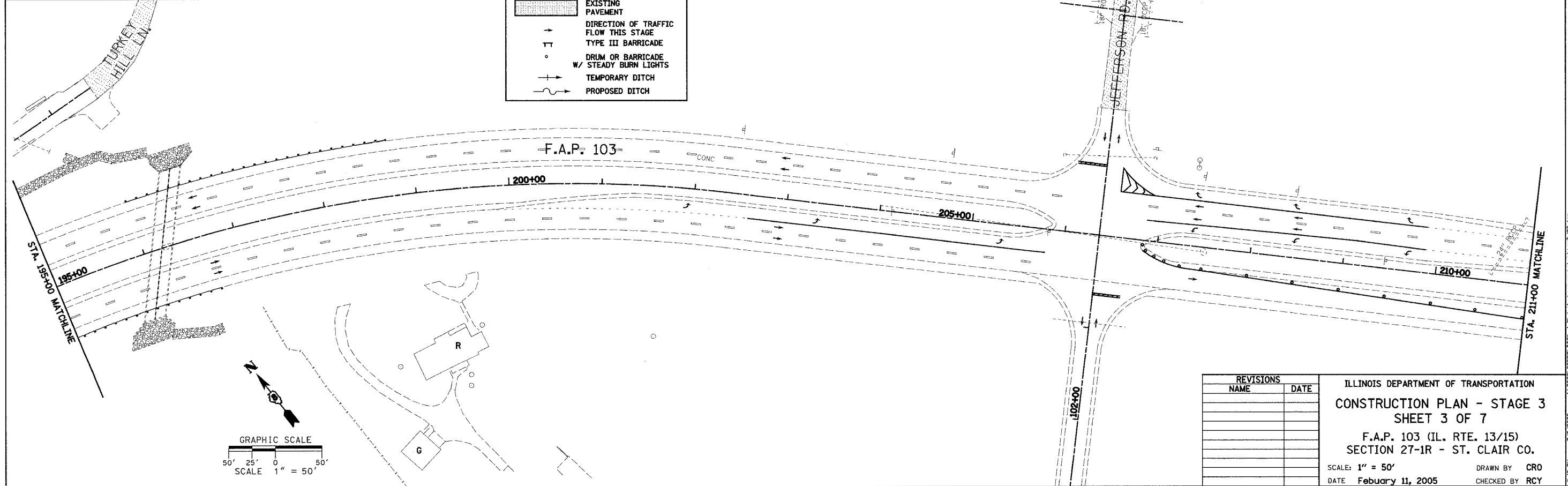
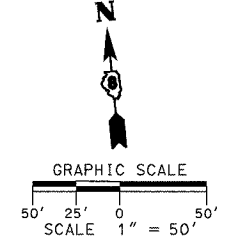
DATE	BY
DATE	BY
DATE	BY
DATE	BY

DATE	BY
DATE	BY
DATE	BY
DATE	BY



LEGEND

	CONSTRUCTION THIS PHASE
	TEMPORARY PAVEMENT (TO REMAIN)
	TEMPORARY PAVEMENT (TO BE REMOVED LATER)
	TEMPORARY DRIVEWAY AGGREGATE
	EXISTING PAVEMENT
	DIRECTION OF TRAFFIC FLOW THIS STAGE
	TYPE III BARRICADE
	DRUM OR BARRICADE W/ STEADY BURN LIGHTS
	TEMPORARY DITCH
	PROPOSED DITCH



REVISIONS	
NAME	DATE

ILLINOIS DEPARTMENT OF TRANSPORTATION
CONSTRUCTION PLAN - STAGE 3
SHEET 3 OF 7
 F.A.P. 103 (IL. RTE. 13/15)
 SECTION 27-1R - ST. CLAIR CO.
 SCALE: 1" = 50'
 DATE February 11, 2005
 DRAWN BY CRO
 CHECKED BY RCY

J:\2002\020658\000\CIVIL\cogn\stage3.const.stage3_03.dgn 3/9/2005 1:49:59 PM