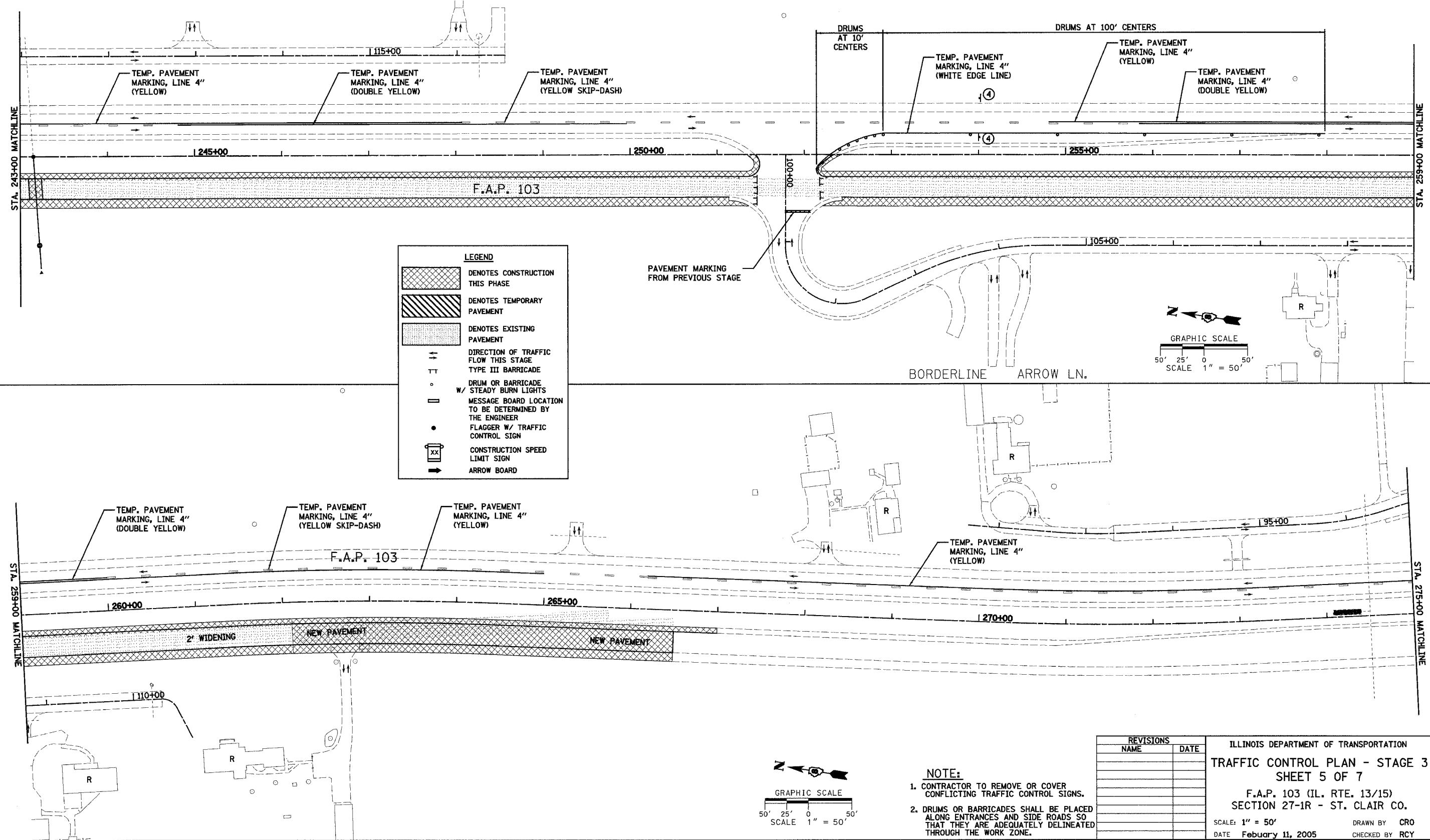


F.A. RTE.	SECTION	COUNTY	TOTAL SHEETS	SHEET NO.
103	27-1R	ST. CLAIR	382	96
STA. 243+00.00		TO STA. 275+00.00		
FED. ROAD DIST. NO. ILLINOIS FED. AID PROJECT				
CONTRACT NO. 76300				

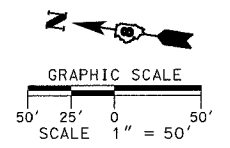
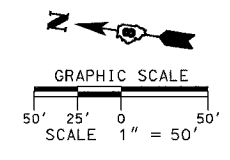
DATE	BY
DATE	BY
DATE	BY
DATE	BY
DATE	BY

DATE	BY
DATE	BY
DATE	BY
DATE	BY
DATE	BY



**LEGEND**

	DENOTES CONSTRUCTION THIS PHASE
	DENOTES TEMPORARY PAVEMENT
	DENOTES EXISTING PAVEMENT
	DIRECTION OF TRAFFIC FLOW THIS STAGE
	TYPE III BARRICADE
	DRUM OR BARRICADE STEADY BURN LIGHTS
	MESSAGE BOARD LOCATION TO BE DETERMINED BY THE ENGINEER
	FLAGGER W/ TRAFFIC CONTROL SIGN
	CONSTRUCTION SPEED LIMIT SIGN
	ARROW BOARD



- NOTE:**
- CONTRACTOR TO REMOVE OR COVER CONFLICTING TRAFFIC CONTROL SIGNS.
  - DRUMS OR BARRICADES SHALL BE PLACED ALONG ENTRANCES AND SIDE ROADS SO THAT THEY ARE ADEQUATELY DELINEATED THROUGH THE WORK ZONE.

REVISIONS	
NAME	DATE

ILLINOIS DEPARTMENT OF TRANSPORTATION  
**TRAFFIC CONTROL PLAN - STAGE 3**  
**SHEET 5 OF 7**  
 F.A.P. 103 (IL. RTE. 13/15)  
 SECTION 27-1R - ST. CLAIR CO.  
 SCALE: 1" = 50'  
 DATE February 11, 2005  
 DRAWN BY CRO  
 CHECKED BY RCY

J:\2002\02058\1000\civil\gen\Traffic\_control\stage5\_103.dwg 3/9/2005 1:28 PM