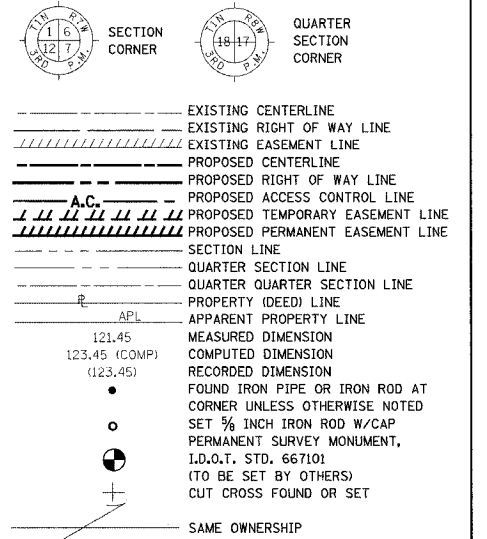


PART OF THE N.E. 1/4 OF SECTION 7, T1S, R7W OF THE THIRD P.M., ST. CLAIR COUNTY, ILLINOIS

SECTION	COUNTY	TOTAL SHEETS	SHEET NO.
103	ST. CLAIR	382	141
STA. 226+38.89 TO STA. 234+16.01			
FED. ROAD DIST. NO.		ILLINOIS	FED. AID PROJECT

LEGEND



- ▲ SET CONCRETE SURVEY CONTROL MONUMENT
- STAKING OF PROPOSED RIGHT OF WAY. SET 5/8 INCH METAL ROD WITH DIVISION OF HIGHWAY SURVEY MARKER TO MONUMENT THE POSITION SHOWN. IDENTIFIED BY INSCRIPTION DATA AND SURVEYORS REGISTRATION NUMBER.
- M STAKING OF PROPOSED RIGHT OF WAY IN CULTIVATED AREAS. SET 5/8 INCH METAL ROD WITH DIVISION OF HIGHWAY SURVEY MARKER 20 INCHES BELOW GROUND SURFACE TO MONUMENT THE POSITION SHOWN. IDENTIFIED BY INSCRIPTION DATA AND SURVEYORS REGISTRATION NUMBER.

STATE OF ILLINOIS)
 COUNTY OF) SS
 THIS IS TO CERTIFY THAT I, RONALD G. BRIGHT AN ILLINOIS PROFESSIONAL LAND SURVEYOR, SURVEYED THE PLAT OF HIGHWAYS SHOWN HEREON IN U.S. SURVEYS NO. 382, 389, AND 772 AND IN SECTIONS 6, 7, 18, 19, 20, 29 AND 30, TOWNSHIP 1 SOUTH, RANGE 7 WEST, OF THE THIRD PRINCIPAL MERIDIAN, ST. CLAIR COUNTY, ILLINOIS, THAT THE SURVEY IS COMPLETE AS SHOWN TO THE BEST OF MY KNOWLEDGE AND BELIEF, THAT THE PLAT REPRESENTS SAID SURVEY, THAT ALL MONUMENTS FOUND AND ESTABLISHED ARE OF PERMANENT QUALITY AND OCCUPY THE POSITIONS SHOWN THEREON AND THAT THE MONUMENTS ARE SUFFICIENT TO ENABLE THE SURVEY TO BE RETRACED. MADE FOR THE DEPARTMENT OF TRANSPORTATION, STATE OF ILLINOIS.

DATED _____
 RONALD G. BRIGHT, PLS #3157
 EXPIRES NOVEMBER 30, 2006

kdg KUHLMANN DESIGN GROUP, INC.
 15 E. WASHINGTON STREET
 BELLEVILLE, ILLINOIS 62220
 (618) 234-8898

ILLINOIS DEPARTMENT OF TRANSPORTATION
PLAT OF HIGHWAYS
 FAP ROUTE 103 (IL RTE. 13/15)
 SECTION 27-1R
 ST. CLAIR COUNTY
 JOB NO. R-98-019-00
 STATION 226+38.89 TO STATION 234+16.01

SCALE: 1" = 50'
 SHEET 24 OF 68

ILLINOIS DEPARTMENT OF TRANSPORTATION
 DIVISION OF HIGHWAYS/DISTRICT 6
 1102 EASTPORT PLAZA DRIVE
 COLLINGSVILLE, ILLINOIS 62234-6198

COORDINATE TABLE				
STATION	OFFSET	NORTH	EAST	
96+47.77	0	655129.1229	2367890.1890	PRC L2-2
96+98.20	0	655078.7795	2367893.2006	PI L2-2
97+47.90	0	655031.4780	2367910.6967	P.T. L2-2
97+86.10	18.00' RT.	654989.4052	2367907.0670	END A.C.
98+81.80	0	654905.8992	2367957.1465	P.C. L2-3
99+37.78	0	654853.3951	2367976.5670	P.I. L2-3
99+92.70	0	654797.4236	2367977.5858	P.T. L2-3
100+00.00	0	654790.1273	2367977.7186	P.O.T.
100+13.65	0	654776.4795	2367977.9671	P.C. L2-4
100+78.48	0	654711.6563	2367979.1470	P.I. L2-4
101+41.69	0	654651.2050	2367955.7148	P.T. L2-4
102+07.62	0	654589.7306	2367931.8860	P.C. L2-5
102+72.45	0	654529.2795	2367908.4538	P.I. L2-5
103+35.65	0	654464.4566	2367909.6215	P.T. L2-5

PROP. CURVE P-AR-L2-1
 PI STA. = 93+43.56
 Δ = 22° 39' 38" (RT)
 D = 3° 40' 31"
 R = 1,559.00'
 T = 312.38'
 L = 616.59'
 E = 30.99'
 P.C. STA. = 90+31.18
 P.R.C. STA. = 96+47.77
 CB = S 14°45'14" E
 C = 612.58'

PROP. CURVE P-AR-L2-2
 PI STA. = 96+98.20
 Δ = 16° 52' 31" (LT)
 D = 16° 51' 08"
 R = 339.99'
 T = 50.43'
 L = 100.14'
 E = 3.72'
 P.R.C. STA. = 96+47.77
 P.T. STA. = 97+47.90
 CB = S 11°51'40" E
 C = 99.77'

PROP. CURVE P-AR-L2-3
 PI STA. = 99+37.78
 Δ = 19° 15' 21" (RT)
 D = 17° 21' 44"
 R = 330.00'
 T = 55.98'
 L = 110.91'
 E = 4.71'
 P.C. STA. = 98+81.80
 P.T. STA. = 99+92.70
 CB = S 10°40'15" E
 C = 110.38'

PROP. CURVE P-AR-L2-4
 PI STA. = 100+78.48
 Δ = 22° 13' 49" (RT)
 D = 17° 21' 44"
 R = 330.00'
 T = 64.83'
 L = 128.04'
 E = 6.31'
 P.C. STA. = 100+13.65
 P.T. STA. = 101+41.69
 CB = S 10°04'20" W
 C = 127.24'

PROP. CURVE P-AR-L2-5
 PI STA. = 102+72.45
 Δ = 22° 13' 49" (LT)
 D = 17° 21' 44"
 R = 330.00'
 T = 64.83'
 L = 128.04'
 E = 6.31'
 P.C. STA. = 102+07.62
 P.T. STA. = 103+35.65
 CB = S 10°04'20" W
 C = 127.23'

- NOTES:
 1. BEARINGS AND COORDINATES SHOWN HEREON ARE BASED ON SURVEY CONTROL DATA PROVIDED BY THE IL. DEPARTMENT OF TRANSPORTATION.
 2. TOPOGRAPHY AS SHOWN SUPPLIED BY IL. DEPARTMENT OF TRANSPORTATION, DISTRICT 6 COLLINGSVILLE, IL.
 3. MRBK = MONUMENT AND RECORD BOOK.