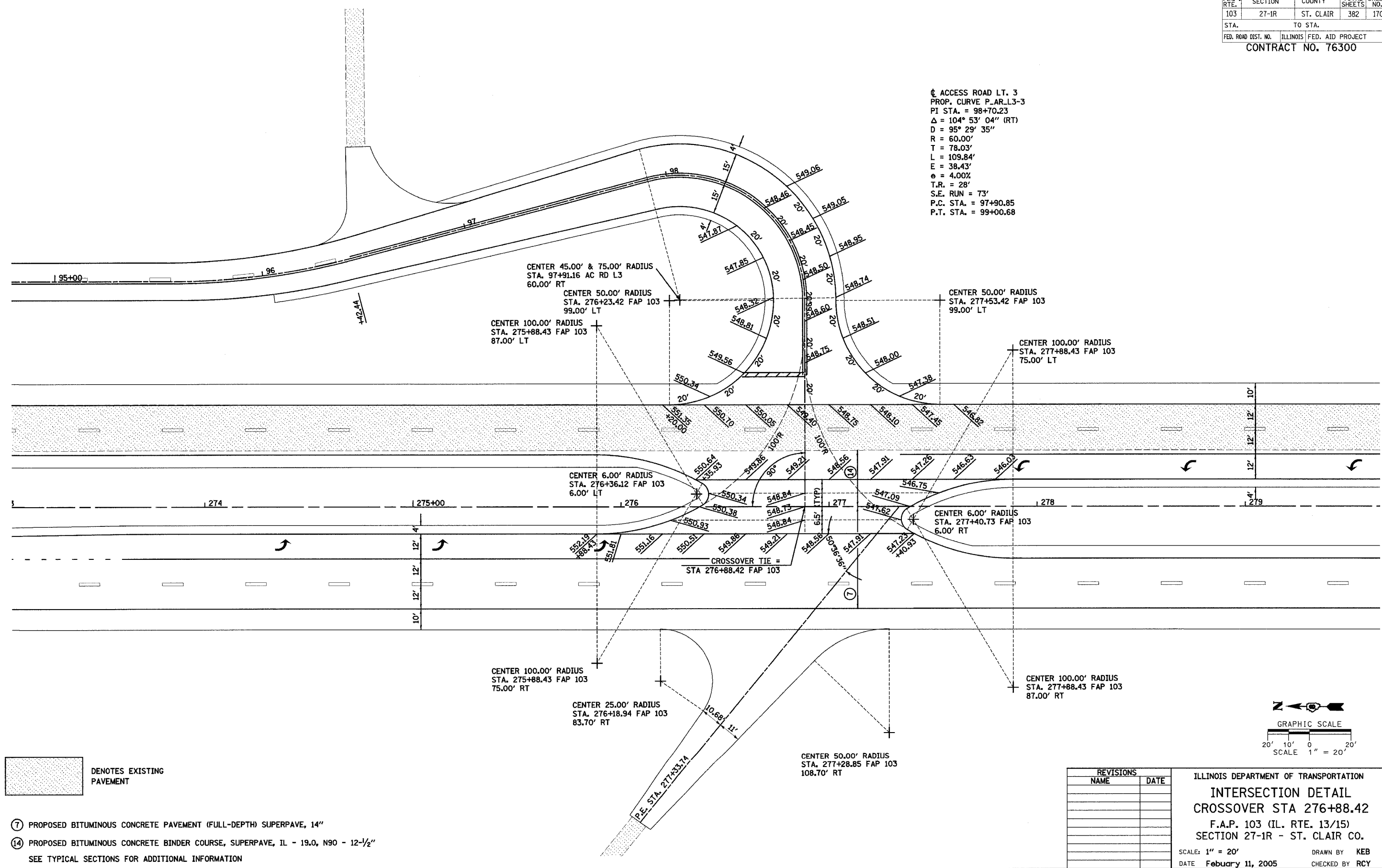


F.A. RTE.	SECTION	COUNTY	TOTAL SHEETS	SHEET NO.
103	27-1R	ST. CLAIR	382	170
STA.		TO STA.		
FED. ROAD DIST. NO.		ILLINOIS FED. AID PROJECT		
CONTRACT NO. 76300				

@ ACCESS ROAD LT. 3  
 PROP. CURVE P\_AR.L3-3  
 PI STA. = 98+70.23  
 $\Delta = 104^\circ 53' 04''$  (RT)  
 $D = 95^\circ 29' 35''$   
 $R = 60.00'$   
 $T = 78.03'$   
 $L = 109.84'$   
 $E = 38.43'$   
 $e = 4.00\%$   
 $T.R. = 28'$   
 $S.E. RUN = 73'$   
 $P.C. STA. = 97+90.85$   
 $P.T. STA. = 99+00.68$



- DENOTES EXISTING PAVEMENT
- ⑦ PROPOSED BITUMINOUS CONCRETE PAVEMENT (FULL-DEPTH) SUPERPAVE, 14"
- ⑭ PROPOSED BITUMINOUS CONCRETE BINDER COURSE, SUPERPAVE, IL - 19.0, N90 - 12-1/2"
- SEE TYPICAL SECTIONS FOR ADDITIONAL INFORMATION

REVISIONS	
NAME	DATE

ILLINOIS DEPARTMENT OF TRANSPORTATION  
**INTERSECTION DETAIL**  
**CROSSOVER STA 276+88.42**  
 F.A.P. 103 (IL. RTE. 13/15)  
 SECTION 27-1R - ST. CLAIR CO.  
 SCALE: 1" = 20'  
 DATE: February 11, 2005  
 DRAWN BY: KEB  
 CHECKED BY: RCY

J:\2002\020658\000\civil\gpn\intersec.dtl 103\_06.dgn 3/10/2005 8:53:14 AM