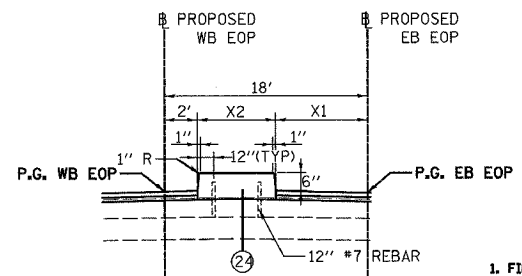
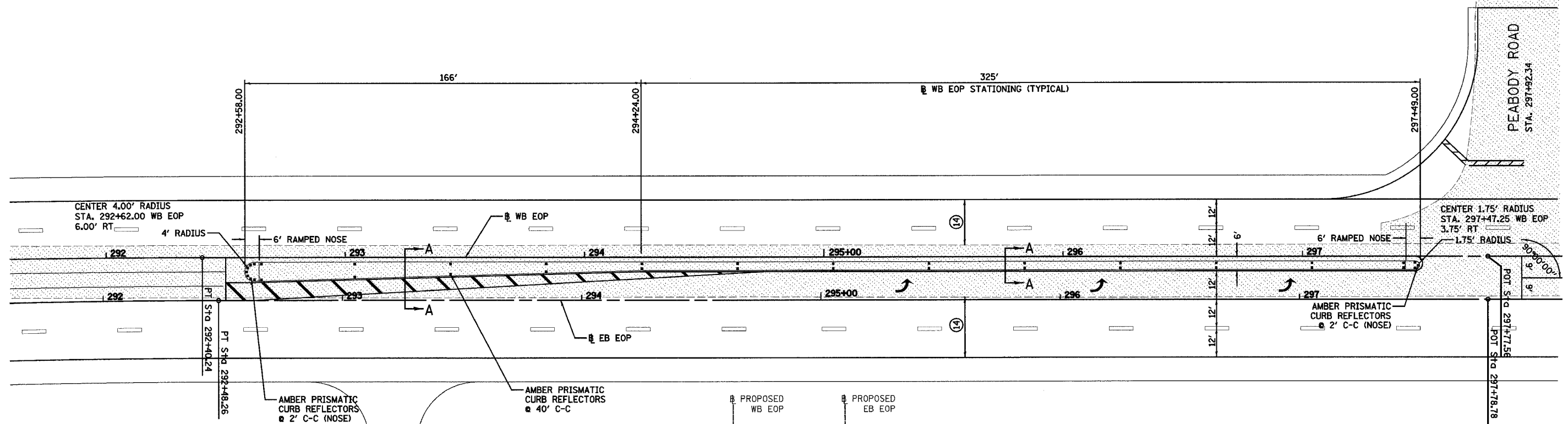


F.A. RTE.	SECTION	COUNTY	TOTAL SHEETS	SHEET NO.
103	27-1R	ST. CLAIR	382	174
STA.		TO STA.		
FED. ROAD DIST. NO.		ILLINOIS FED. AID PROJECT		
CONTRACT NO. 76300				



X1 = 8' FROM STA 292+58 TO 292+64
 X1 VARIES 8' TO 12.5' FROM STA 292+64 TO 294+24
 X1 = 12.5' FROM STA 294+24 TO 297+49
 X2 = 8' FROM STA 292+58 TO 292+64
 X2 VARIES 8' TO 3.5' FROM STA 292+64 TO 294+24
 X2 = 3.5' FROM STA 294+24 TO 297+49

(24) PROPOSED CONCRETE MEDIAN, TYPE SB (MODIFIED)

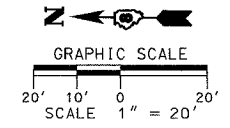
1. FINAL MEDIAN IS TO BE 6 INCHES ABOVE OVERLAY
2. FOR PROPOSED CONCRETE MEDIAN, TYPE SB (SPECIAL), DRILL AND EPOXY 12" #7 REBARS ALONG MEDIAN EDGES AT 4 FOOT INTERVALS, PROVIDE 3 INCHES OF COVER BETWEEN TOP OF BAR AND FINAL MEDIAN SURFACE. PAYMENT INCIDENTAL TO PROPOSED CONCRETE MEDIAN, TYPE SB (SPECIAL)

SECTION A-A
 STATION 294+23.69 TO 297+47.56

STATION TO STATION	CONCRETE MEDIAN TYPE SB (MODIFIED)		REMARKS
	SAND FILL CU YD	SQ FT	
292+58.00 292+64.00		48.0	RAMPED NOSE
292+64.00 294+24.00		920.0	
294+24.00 297+43.00		1116.5	
297+43.00 297+49.00		21.0	RAMPED NOSE
SUBTOTALS		2105.5	

DENOTES EXISTING PAVEMENT

- (7) PROPOSED BITUMINOUS CONCRETE PAVEMENT (FULL-DEPTH) SUPERPAVE, 14"
 - (14) PROPOSED BITUMINOUS CONCRETE BINDER COURSE, SUPERPAVE, IL - 19.0, N90 - 12-1/2"
- SEE TYPICAL SECTIONS FOR ADDITIONAL INFORMATION



REVISIONS	
NAME	DATE

ILLINOIS DEPARTMENT OF TRANSPORTATION
 INTERSECTION DETAIL
 MEDIAN LAYOUT
 STA 291+50 TO STA 297+77
 F.A.P. 103 (IL. RTE. 13/15)
 SECTION 27-1R - ST. CLAIR CO.
 SCALE: 1" = 20'
 DATE February 11, 2005
 DRAWN BY KEB
 CHECKED BY RCY

I:\2002\0258\000\civil\dwg\intersect.dwg (intersect.dwg) 3/10/2005 3:10:26 PM