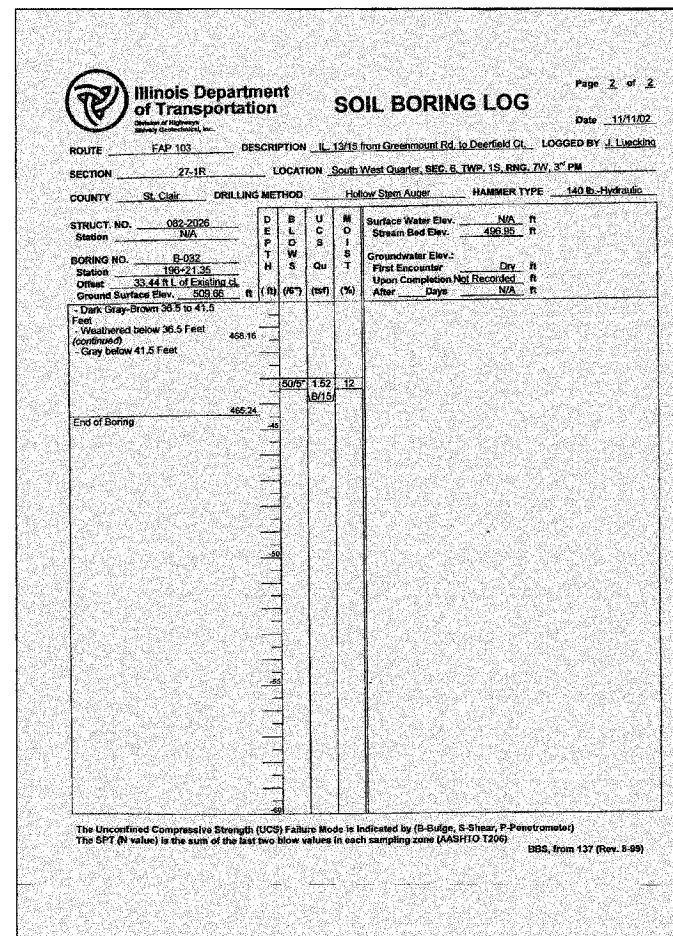
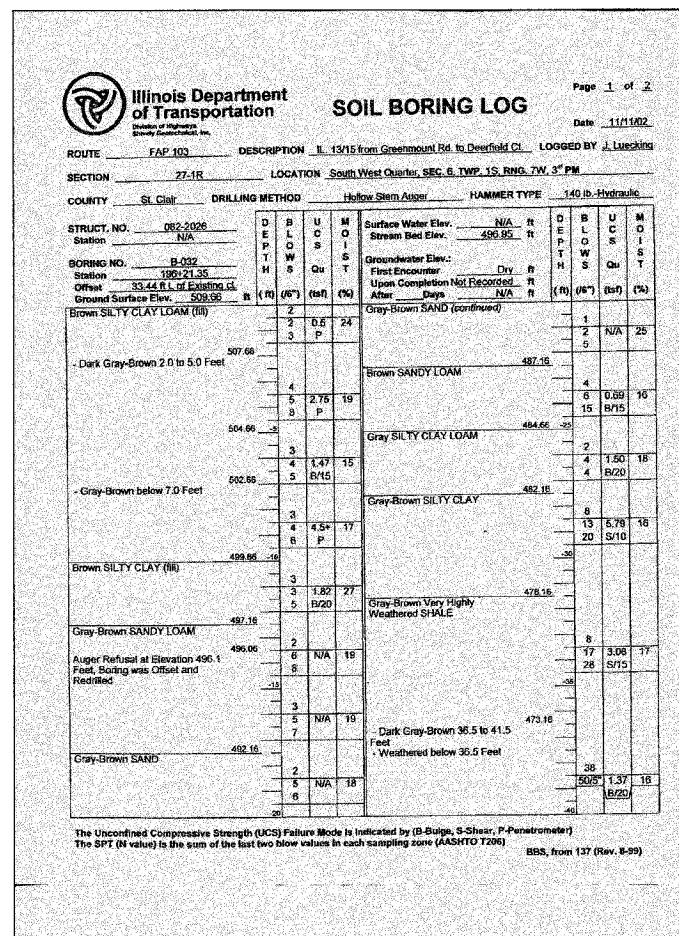
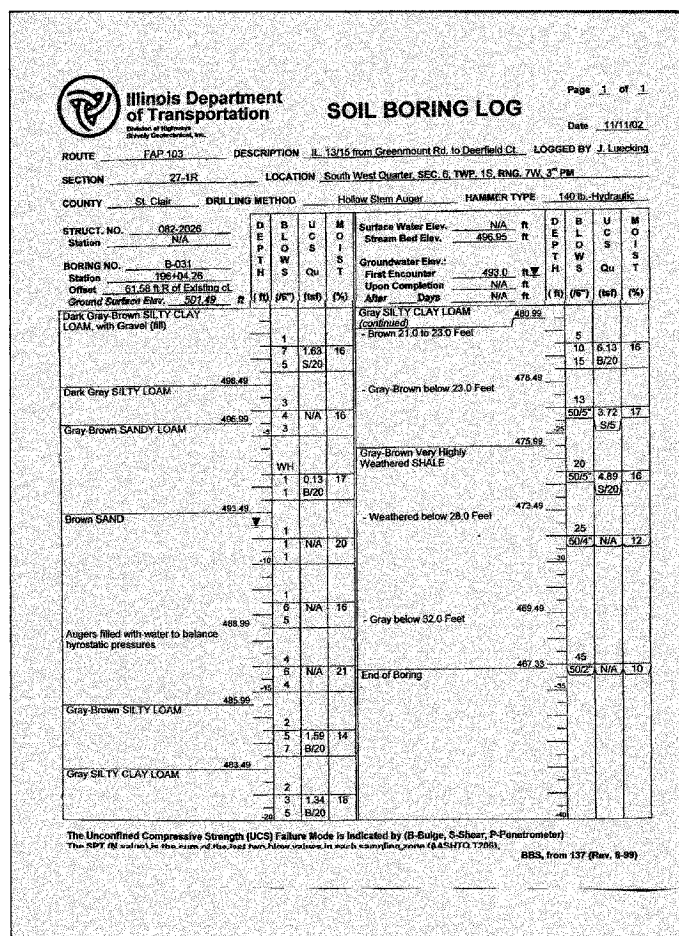
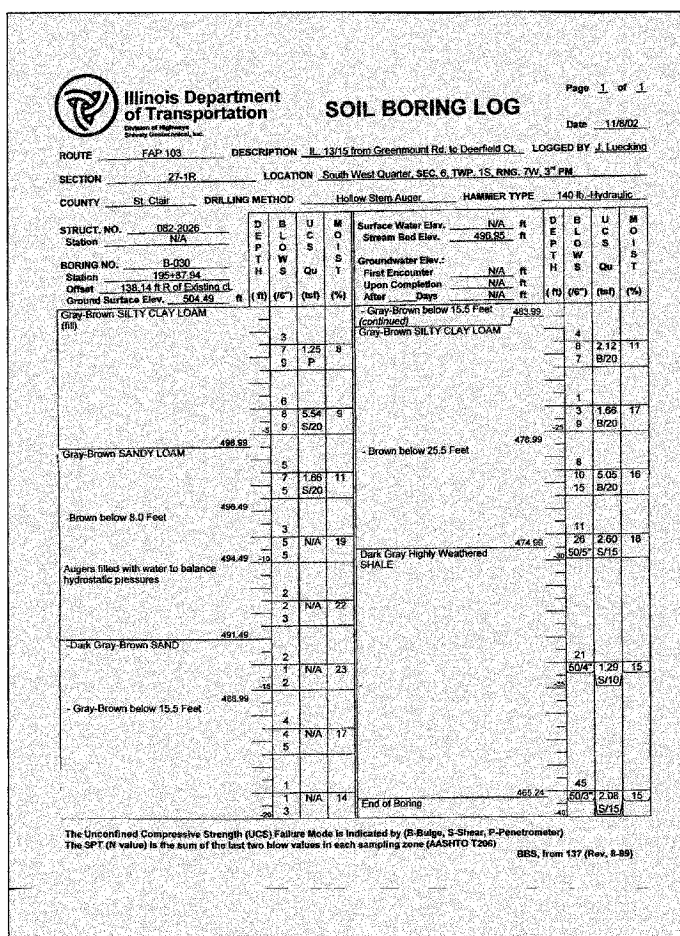


STATE OF ILLINOIS
DEPARTMENT OF TRANSPORTATION

ROUTE NO.	SECTION	COUNTY	STA.	POST
F.A.P. 103	27-1R	ST. CLAIR	382	194
FED. ROAD DIST. NO.	ILLINOIS	FED. AID PROJECT-		

CONTRACT NO. 76300

SHEET NO. 4
4 SHEETS



DESIGNED	KCM
CHECKED	TMM
DRAWN	JLM
CHECKED	TMM

SOIL INFORMATION
IL ROUTE 13/15
OVER SUGAR CREEK
F.A.P. ROUTE 103 SECTION 27-1R
ST. CLAIR COUNTY
STATION 196+20.39
STRUCTURE NO. 082-2043