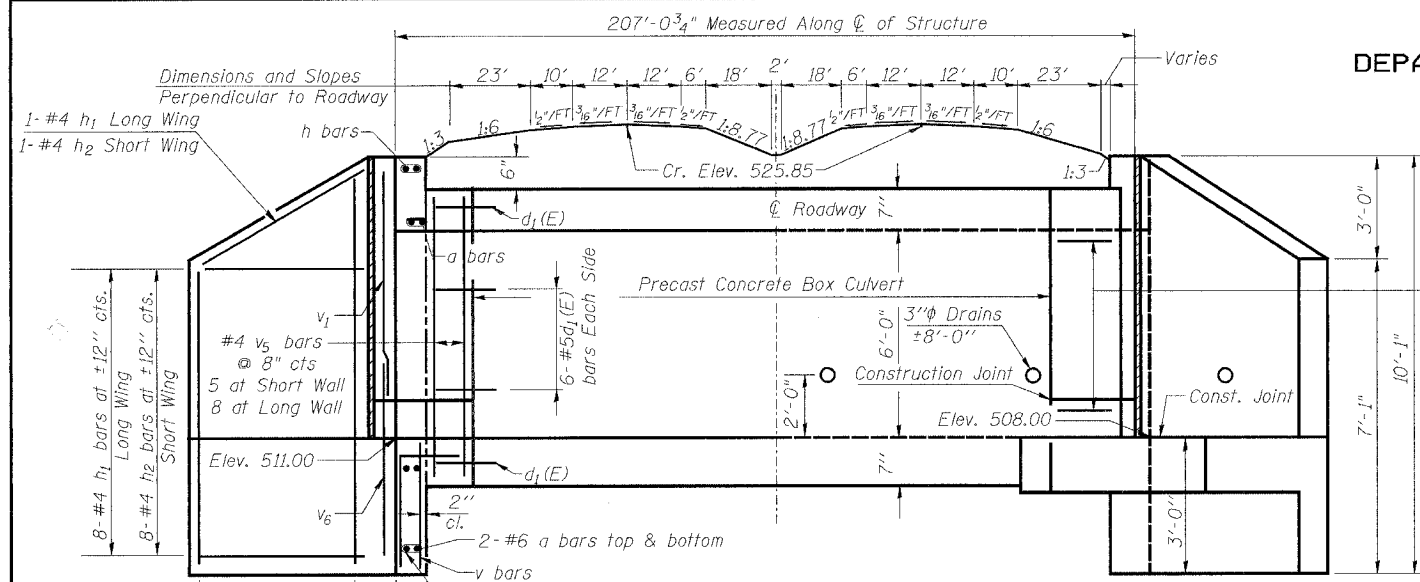


STATE OF ILLINOIS
DEPARTMENT OF TRANSPORTATION

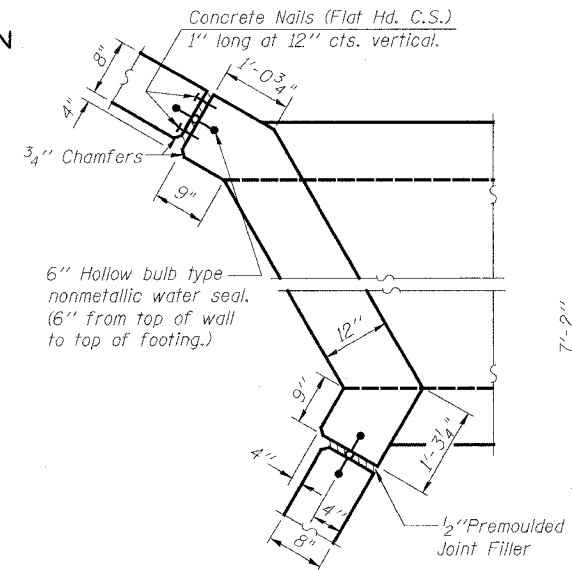
ROUTE NO.	SECTION	COUNTY	DATE	PROJECT	SHEET NO. 1
F.A.P. 103	27-1R	ST. CLAIR	382	195	2 SHEETS
FED. ROAD DIST. NO. 7 ILLINOIS FED. AID PROJECT-					CONTRACT NO. 76300



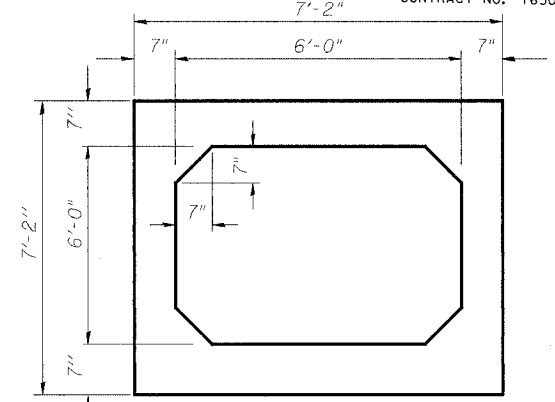
HALF LONG. SECT. HALF ELEVATION

Dimensions at Rt. L's to \bar{C} Roadway

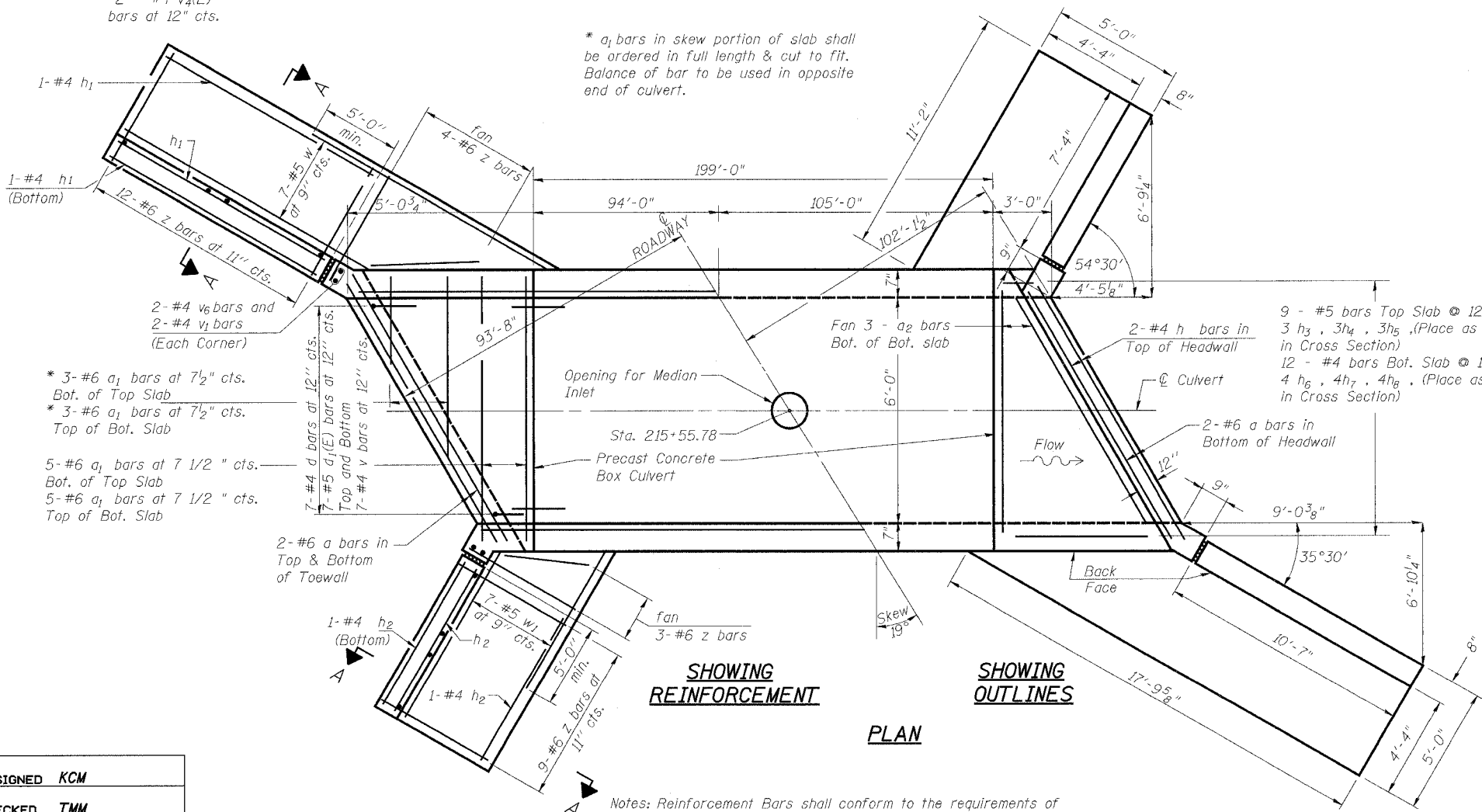
Long Wing	4 - #4 v ₂ (E)
	4 - #4 v ₃ (E)
	3 - #4 v ₄ (E)
	bars at 12" cts.
Short Wing	3 - #4 v ₂ (E)
	3 - #4 v ₃ (E)
	2 - #4 v ₄ (E)
	bars at 12" cts.



CORNER DETAIL



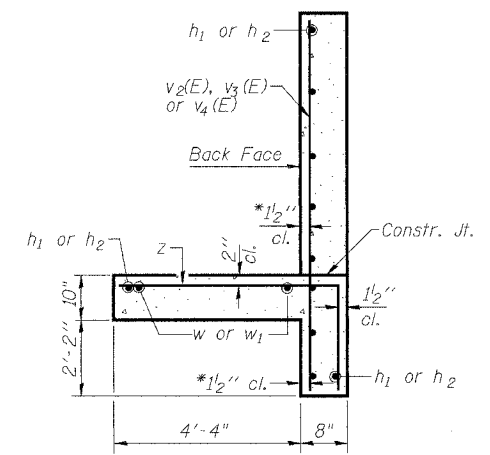
SECTION THRU BARREL (PRECAST)



SHOWING REINFORCEMENT SHOWING OUTLINES

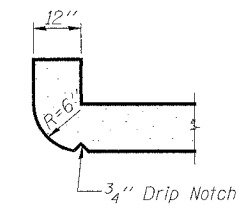
PLAN

Notes: Reinforcement Bars shall conform to the requirements of AASHTO M31 or M322, Grade 60. Reinforcement bars designated (E) shall be epoxy coated. All construction joints shall be bonded.



SECTION A-A

*v bars shall not be placed more than 1/2" cl. from back face of wingwall.



SECTION THRU HEADWALL
(Up Stream End Only)

DESIGN STRESSES

f_y = 60,000 psi
f'_c = 3,500 psi - cast in place
f'_c = 5,000 psi - precast
Max. Soil Pressure under footing = 2,655 psf

LOADING HS 20-44

Design Fill Height 10'-0"

SINGLE BOX CULVERT 6x6
IL ROUTE 13/15
F.A.P. ROUTE 103 SECTION 27-1R
ST. CLAIR COUNTY
STATION 215+55.78

DESIGNED	KCM
CHECKED	TMM
DRAWN	EJR
CHECKED	TMM