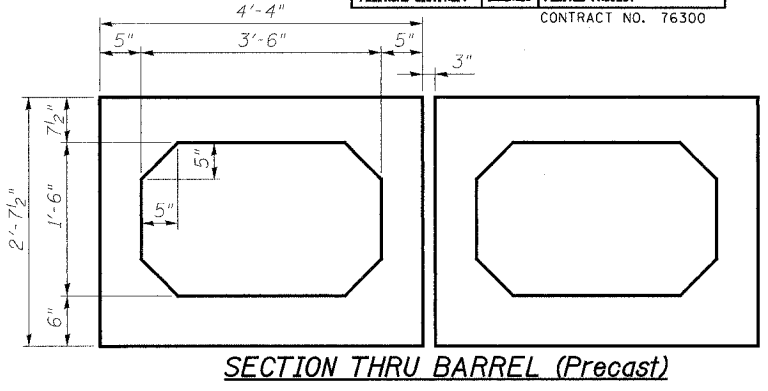
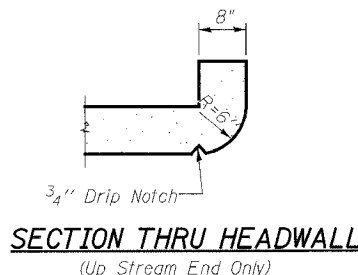
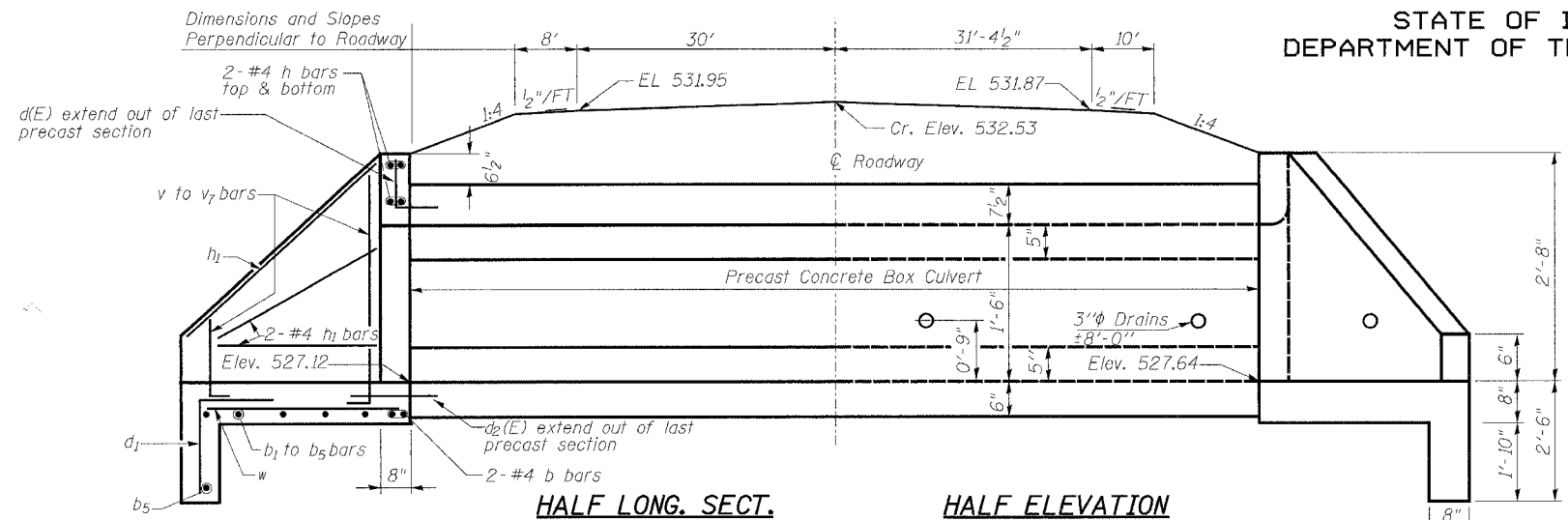
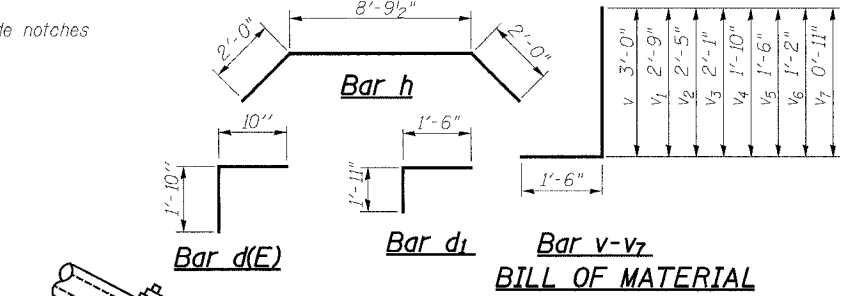
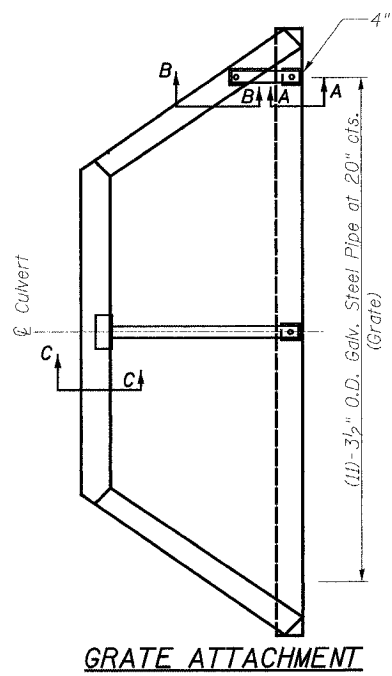
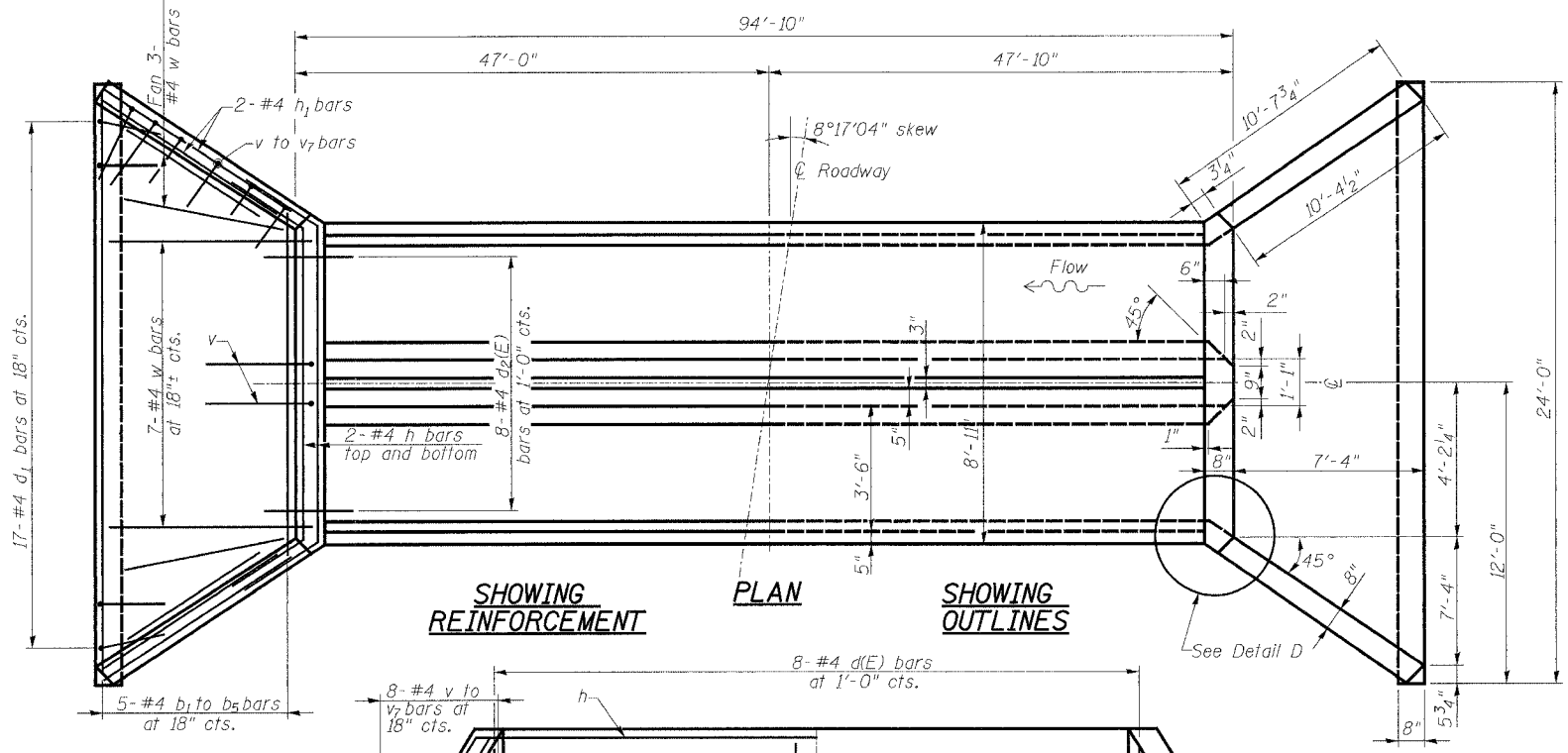


STATE OF ILLINOIS  
DEPARTMENT OF TRANSPORTATION

ROUTE NO.	SECTION	COUNTY	STATION	SHEET	SHEET NO. 1 1 SHEETS
F.A.P. 103	27-1R	ST. CLAIR	382	198	
FED. ROAD DIST. NO. 7 ILLINOIS FED. AID PROJECT - CONTRACT NO. 76300					



\*3" nominal space shall be left between adjacent precast sections. After the precast cells are in place and backfill has been placed to midheight of the precast concrete box section on each side, the space between the cells shall be filled with Class S1 Concrete. Class S1 Concrete cast-in-place between adjacent cells will not be measured for payment.



Bar	No.	Size	Length	Shape
b	4	#4	8'-10"	
b1	2	#4	12'-0"	
b2	2	#4	15'-0"	
b3	2	#4	18'-0"	
b4	2	#4	21'-0"	
b5	4	#4	23'-8"	
d(E)	16	#4	2'-8"	
d1	34	#4	3'-5"	
d2(E)	16	#4	3'-0"	
h	8	#4	12'-9 1/2"	
h1	16	#4	10'-4"	
v	8	#4	4'-6"	
v1	4	#4	4'-3"	
v2	4	#4	3'-11"	
v3	4	#4	3'-7"	
v4	4	#4	3'-4"	
v5	4	#4	3'-0"	
v6	4	#4	2'-8"	
v7	4	#4	2'-5"	
w	26	#4	7'-8"	
Precast Concrete Box Culvert		Foot	187	
* Concrete Box Culverts		Cu. Yd.	11.0	
* Reinforcement Bars, Epoxy Coated		Pound	70	
* Reinforcement Bars		Pound	660	

**Design Stresses**  
 $f_y = 60,000$  psi  
 $f'_c = 3,500$  psi - cast in place  
 $f'_c = 5,000$  psi - precast

**Loading HS 20-44**  
 Design Fill Height < 2'  
 AASHTO M 273

**DOUBLE BOX CULVERT 3.5x1.5**  
 IL ROUTE 13/15  
 F.A.P. ROUTE 103 SECTION 27-1R  
 ST. CLAIR COUNTY  
 STATION 300+82.37

DESIGNED	KCM
CHECKED	TMM
DRAWN	JLM
CHECKED	TMM

Notes: Reinforcement Bars shall conform to the requirements of AASHTO M31 or M322 Grade 60. Reinforcement bars designated (E) shall be epoxy coated. All construction joints shall be bonded. Provide pipe grate each end.