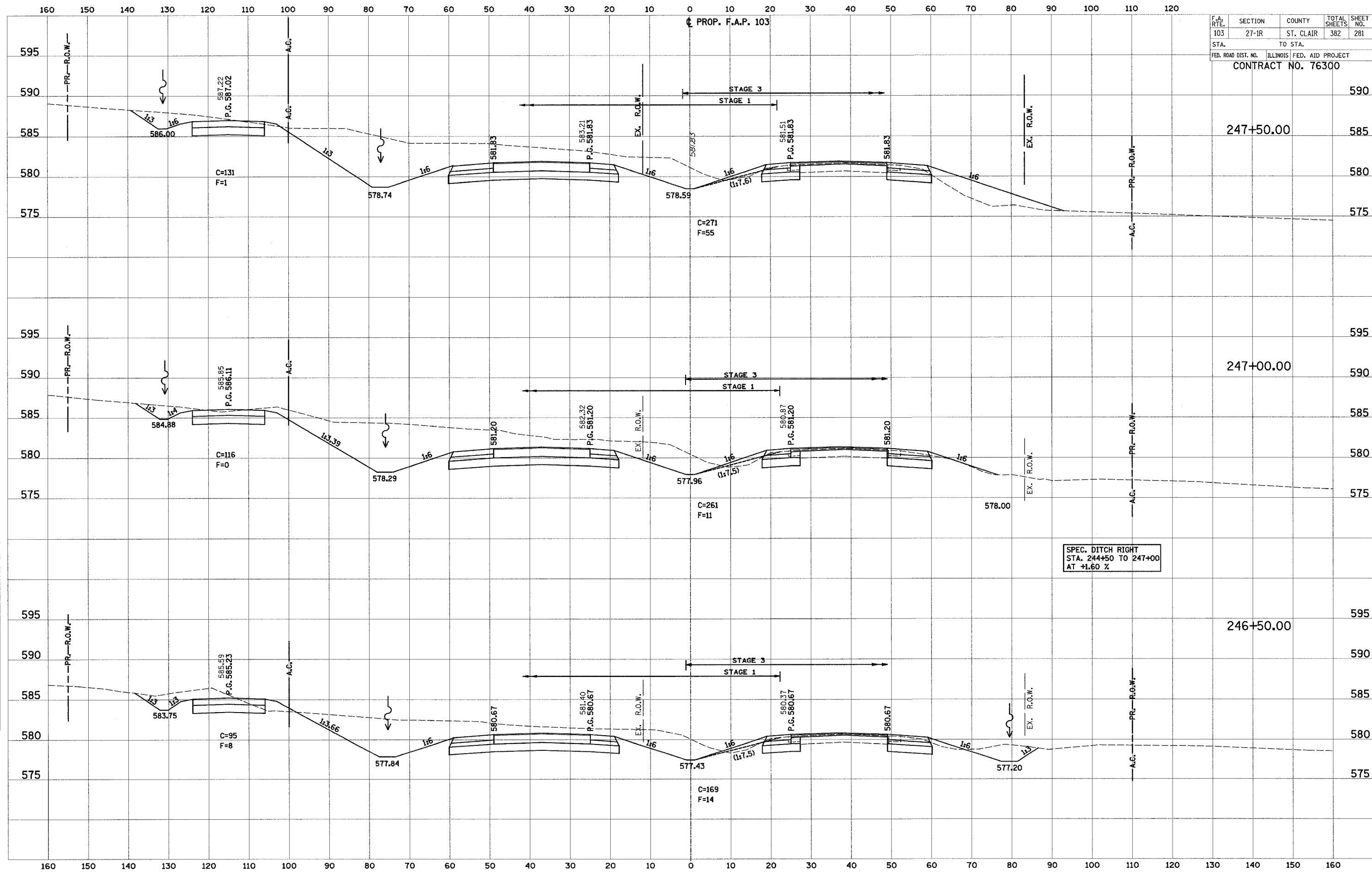


F.A. RTE.	SECTION	COUNTY	TOTAL SHEETS	SHEET NO.
103	27-1R	ST. CLAIR	382	281
STA.		TO STA.		
FED. ROAD DIST. NO.		ILLINOIS	FED. AID PROJECT	
CONTRACT NO. 76300				

PROP. F.A.P. 103

FINAL SURVEY	DATE
BY	
SURVEYED	
NOTE BOOK	
AREAS CHECKED	

ORIGINAL SURVEY	DATE
BY	
SURVEYED	
NOTE BOOK	
AREAS CHECKED	



SPEC. DITCH RIGHT
STA. 244+50 TO 247+00
AT +1.60 %