

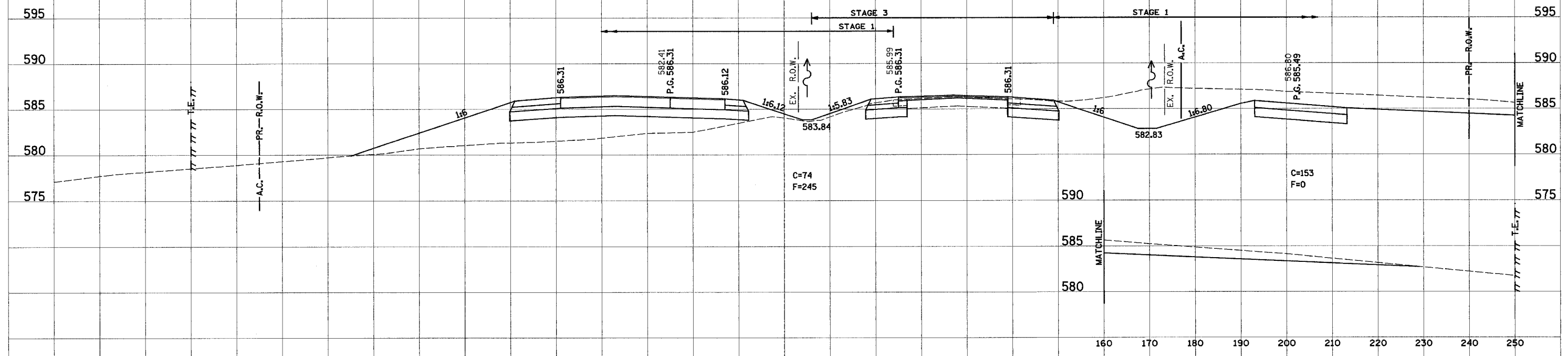
160 150 140 130 120 110 100 90 80 70 60 50 40 30 20 10 0 10 20 30 40 50 60 70 80 90 100 110 120

PROP. F.A.P. 103

F.A. RTE.	SECTION	COUNTY	TOTAL SHEETS	SHEET NO.
103	27-1R	ST. CLAIR	382	288
STA.		TO STA.		
FED. ROAD DIST. NO.		ILLINOIS	FED. AID PROJECT	
CONTRACT NO. 76300				

254+00.00

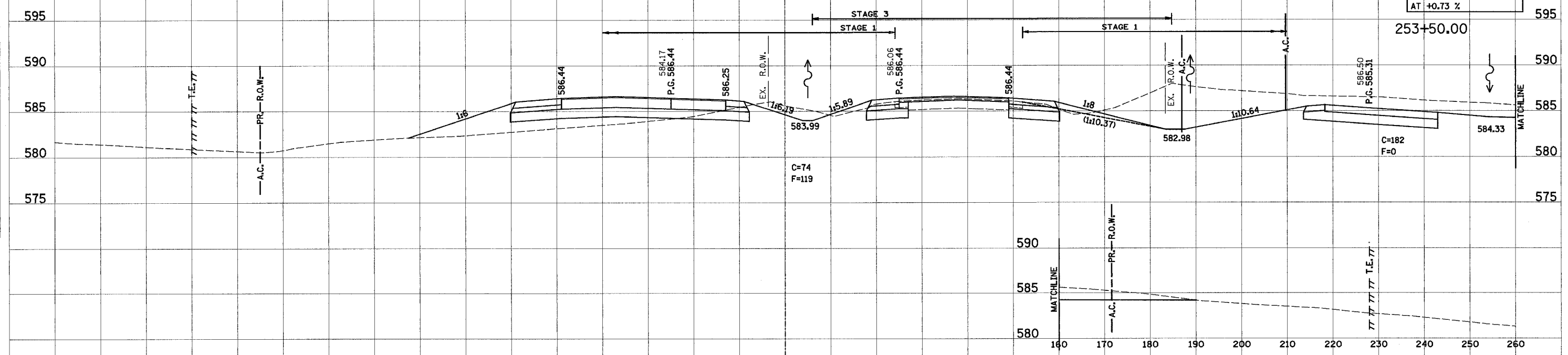
FINAL SURVEY	DATE
SURVEYED	BY
NOTE BOOK	NO.
TEMPLATE	AREAS CHECKED
AREAS	



NOTE: F.E. @ STA. 253+56.25 RT.

SPEC. DITCH RT. AC. RD. STA. 253+80 TO 254+75 AT +0.73 %

ORIGINAL SURVEY	DATE
SURVEYED	BY
NOTE BOOK	NO.
TEMPLATE	AREAS CHECKED
AREAS	



160 150 140 130 120 110 100 90 80 70 60 50 40 30 20 10 0 10 20 30 40 50 60 70 80 90 100 110 120 130 140 150 160