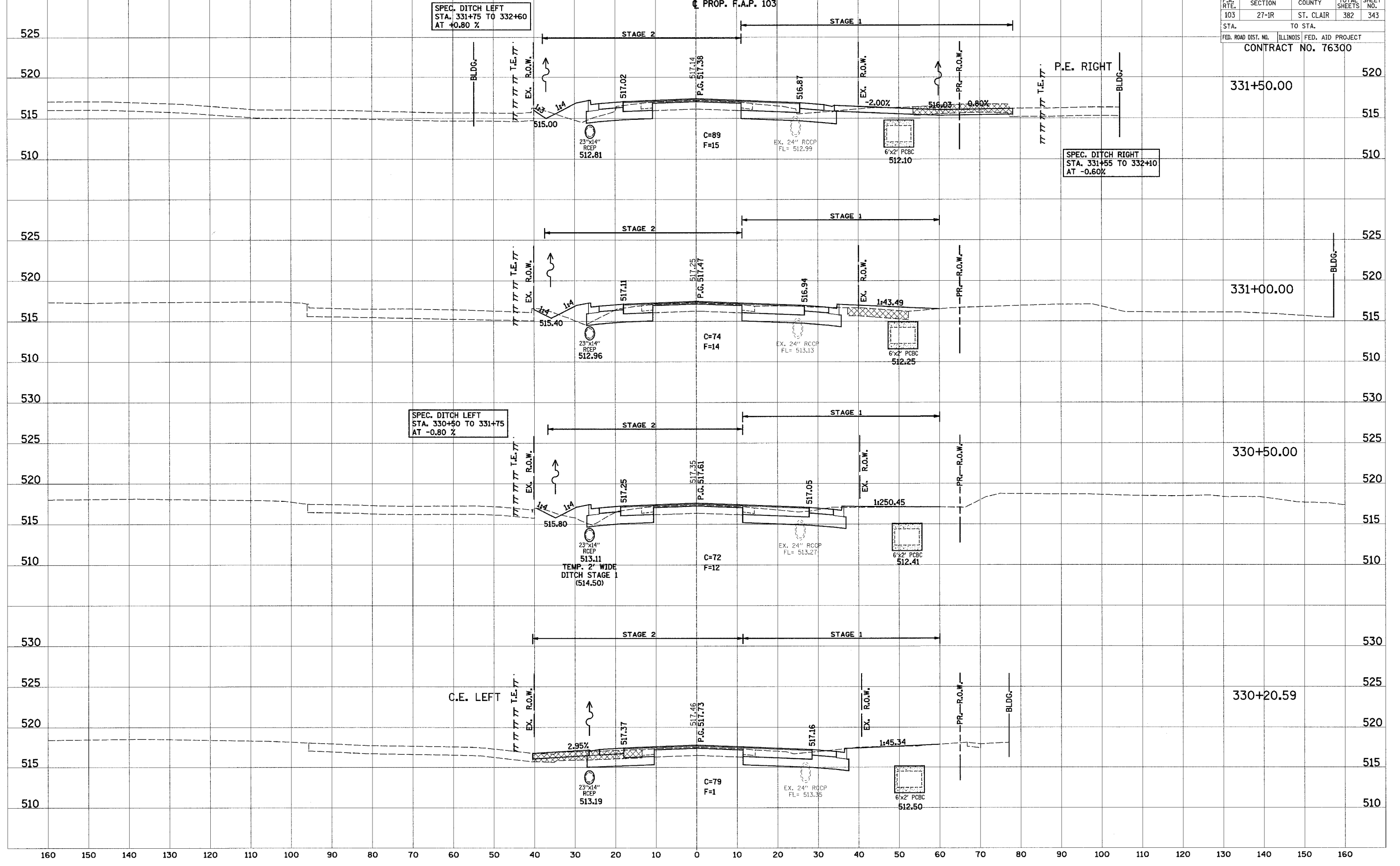


160 150 140 130 120 110 100 90 80 70 60 50 40 30 20 10 0 10 20 30 40 50 60 70 80 90 100 110 120

F.A. RTE. 103	SECTION 27-IR	COUNTY ST. CLAIR	TOTAL SHEETS 382	SHEET NO. 343
STA. TO STA.		FED. ROAD DIST. NO. ILLINOIS FED. AID PROJECT		
CONTRACT NO. 76300				



SPEC. DITCH LEFT
STA. 331+75 TO 332+60
AT +0.80 %

SPEC. DITCH RIGHT
STA. 331+55 TO 332+10
AT -0.60 %

SPEC. DITCH LEFT
STA. 330+50 TO 331+75
AT -0.80 %

TEMP. 2' WIDE
DITCH STAGE 1
(514.50)

C.E. LEFT

DATE	BY
DATE	BY
DATE	BY
DATE	BY

DATE	BY
DATE	BY
DATE	BY
DATE	BY

160 150 140 130 120 110 100 90 80 70 60 50 40 30 20 10 0 10 20 30 40 50 60 70 80 90 100 110 120 130 140 150 160