

F.A.P. RTE.	SECTION	COUNTY	TOTAL SHEETS	SHEET NO.
312	66-31	MONROE	45	1

STATE OF ILLINOIS  
DEPARTMENT OF TRANSPORTATION  
DIVISION OF HIGHWAYS

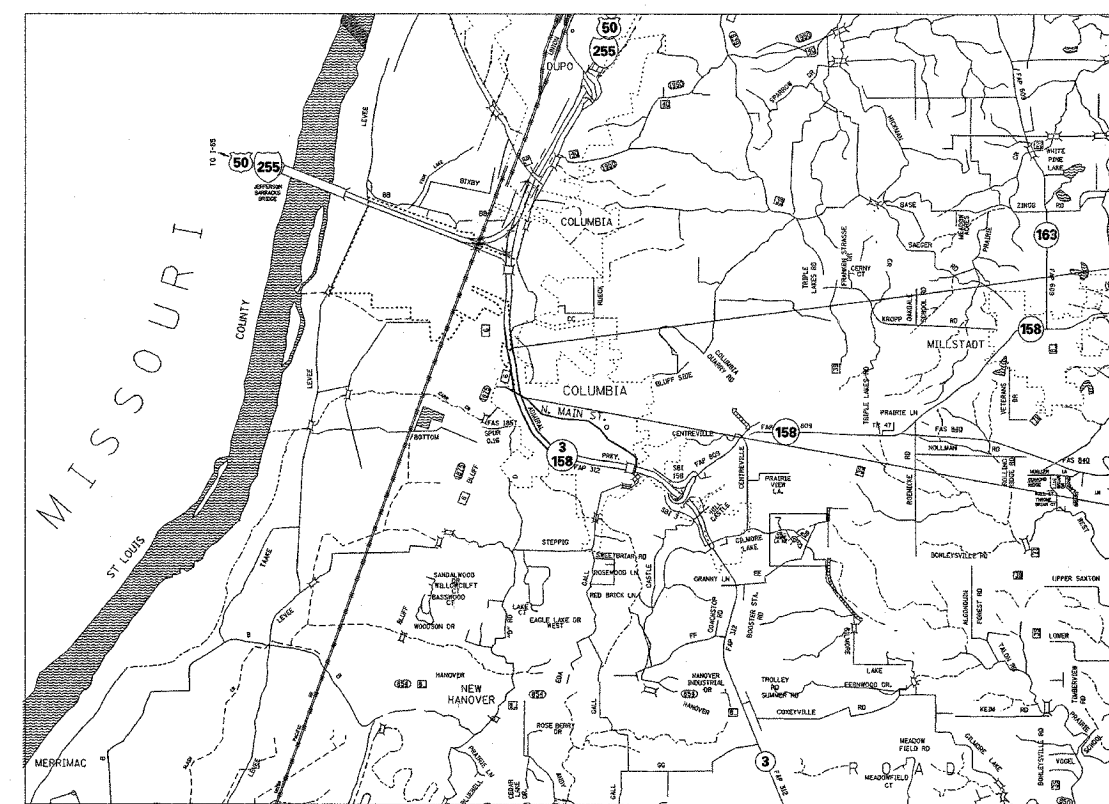
**PROPOSED  
HIGHWAY PLANS**

FAP ROUTE 312 (IL 3)  
SECTION 66-31  
PROJECT: HS-312(029)  
MONROE COUNTY

INTERSECTION IMPROVEMENT AND LANE ADDITION  
C-98-120-05

INDEX OF SHEETS

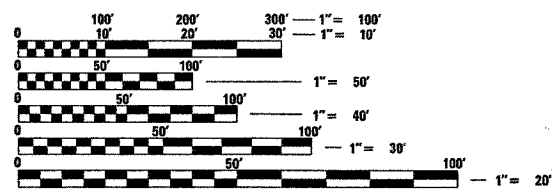
- 1. COVER SHEET
- 2. GENERAL NOTES & STANDARDS
- 3.-4. SUMMARY OF QUANTITIES
- 5.-10. TYPICAL SECTIONS
- 11.-12. SCHEDULES
- 13. CONSTRUCTION DETAILS
- 14.-17. TRAFFIC CONTROL PLAN
- 18.-21. PLAN SHEETS
- 22.-25. ELECTRICAL SHEETS
- 26.-29. PAVEMENT MARKING AND SIGNING SHEETS
- 30.-45. CROSS SECTION SHEETS



END STA 620+12  
NORTHBOUND IL 3  
LAT 38.45895  
LONG -90.22140

BEGIN STA. 116+55.54  
NORTH MAIN STREET  
LAT 38.45561  
LONG -90.22056

MICROFILMED \_\_\_\_\_  
REEL NUMBER \_\_\_\_\_  
AWARDED \_\_\_\_\_  
RESIDENT ENGINEER \_\_\_\_\_  
AS BUILT CHANGES WERE MADE  
ON THE FOLLOWING SHEETS



FULL SIZE PLANS HAVE BEEN PREPARED USING STANDARD ENGINEERING SCALES. REDUCED SIZED PLANS WILL NOT CONFORM TO STANDARD SCALES. IN MAKING MEASUREMENTS ON REDUCED PLANS, THE ABOVE SCALES MAY BE USED.

J.U.L.I.E.  
JOINT UTILITY LOCATION INFORMATION FOR EXCAVATION  
1-800-892-0123

	ADT	
	N. MAIN ST.	IL 3
2003	7900	32300
2025	11000	44850
SU%	9.5	6.0
MU%	2.4	4.0

GROSS LENGTH = 1757 FT. = 0.333 MI.  
NET LENGTH = 1757 FT. = 0.333 MI.

STATE OF ILLINOIS  
DEPARTMENT OF TRANSPORTATION  
DIVISION OF HIGHWAYS

SUBMITTED Feb 10 2006  
May C. Lammie  
DEPUTY DIRECTOR OF HIGHWAYS  
REGION FIVE ENGINEER

March 24 2006  
Mike Hine  
ENGINEER OF DESIGN AND ENVIRONMENT

March 24 2006  
Milton R. Seese P.E.  
DIRECTOR, DIVISION OF HIGHWAYS

**PRINTED BY THE AUTHORITY  
OF THE STATE OF ILLINOIS**

PROJECT ENGINEER: PATTI LEBEAU 618-346-3179  
SQUAD LEADER: CHERYL KEPLAR 618-346-3186

CONTRACT NO. 76952