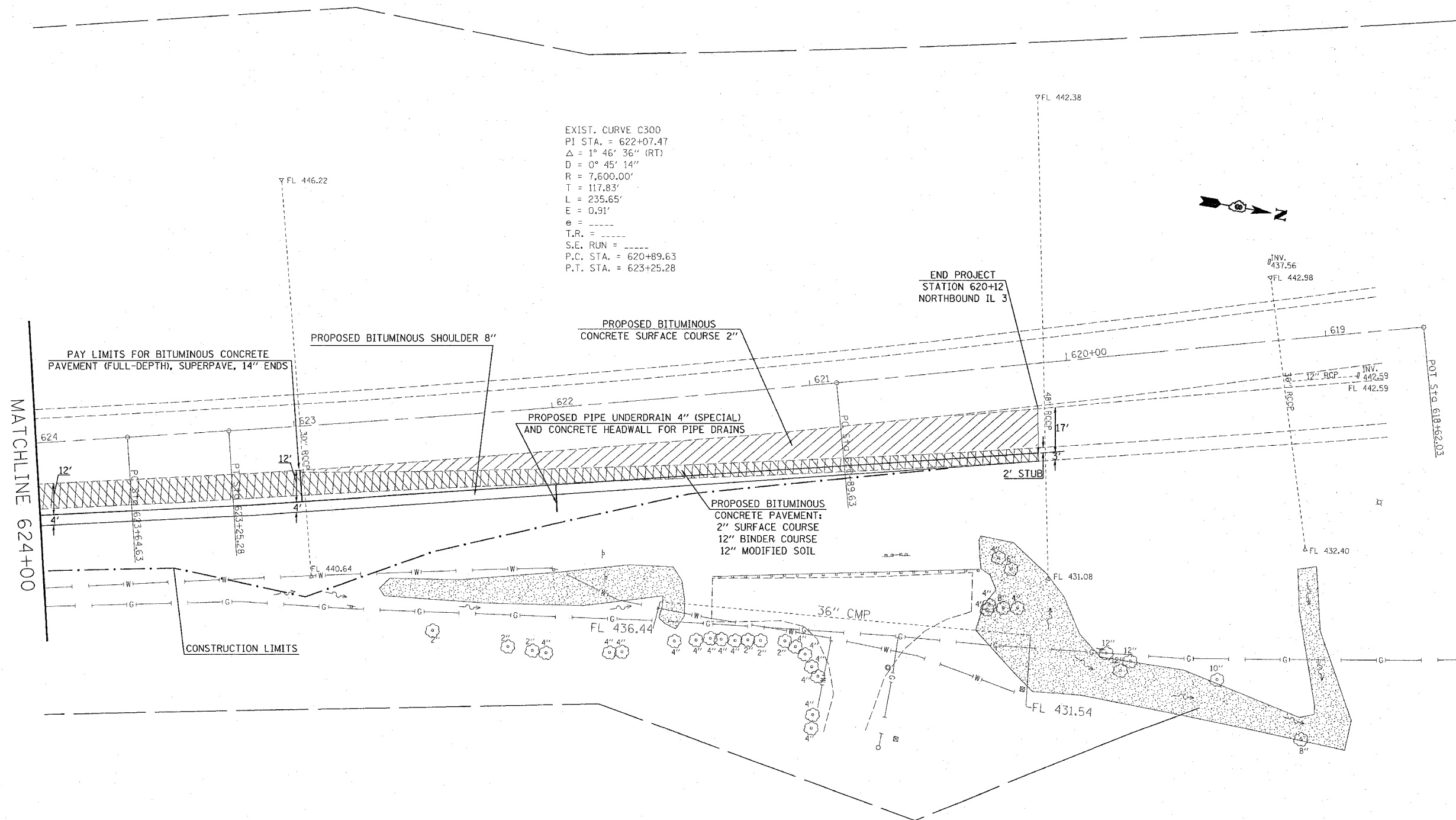
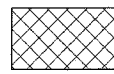
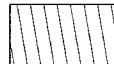


| CONTRACT NO. 76952 | | | | |
|------------------------------|---------|------------------|--------------|-----------|
| F.A.P. RTE. | SECTION | COUNTY | TOTAL SHEETS | SHEET NO. |
| 312 | 66-3I | MONROE | 45 | 21 |
| STA. 624+00 | | TO STA. 620+12 | | |
| FED. ROAD DIST. NO. ILLINOIS | | FED. AID PROJECT | | |

EXIST. CURVE C300
 PI STA. = 622+07.47
 $\Delta = 1^\circ 46' 36''$ (RT)
 $D = 0^\circ 45' 14''$
 $R = 7,600.00'$
 $T = 117.83'$
 $L = 235.65'$
 $E = 0.91'$
 $e =$ ----
 $T.R. =$ ----
 $S.E. RUN =$ ----
 $P.C. STA. = 620+89.63$
 $P.T. STA. = 623+25.28$



-  PAVED SHOULDER REMOVAL
-  BITUMINOUS SURFACE REMOVAL 2"

NOTES:

MODIFIED SOIL 12" SHALL BE PREPARED FOR PLACEMENT OF PROPOSED BITUMINOUS CONCRETE PAVEMENT (FULL-DEPTH), SUPERPAVE, 14" AND BITUMINOUS WIDENING EXTENDING TO STATION 620+12.

REMOVAL OF EXISTING UNDERDRAINS, OUTLETS, CONCRETE HEADWALL FOR UNDERDRAIN, AND DELINEATORS SHALL BE INCLUDED IN THE COST OF EARTHWORK.

| REVISIONS | |
|-----------|------|
| NAME | DATE |
| | |
| | |
| | |
| | |
| | |
| | |
| | |
| | |
| | |

ILLINOIS DEPARTMENT OF TRANSPORTATION
PLAN SHEET
 FAP ROUTE 312
 SECTION 66-3I
 MONROE COUNTY

SCALE: VERT.
 HORIZ.
 DATE

DRAWN BY
 CHECKED BY

PLOT DATE = 2/1/2006
 FILE NAME = c:\projects\76952\plan\p1-d0305.dgn
 PLOT SCALE = 28.0000' / 1" IN.
 REFERENCE = #REF#