

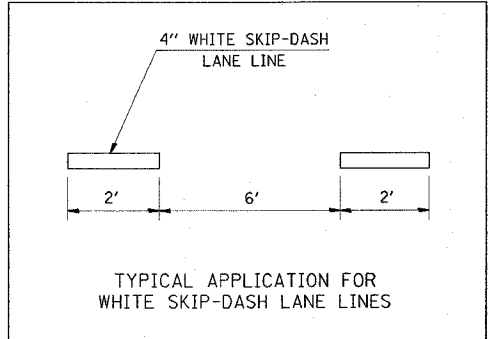
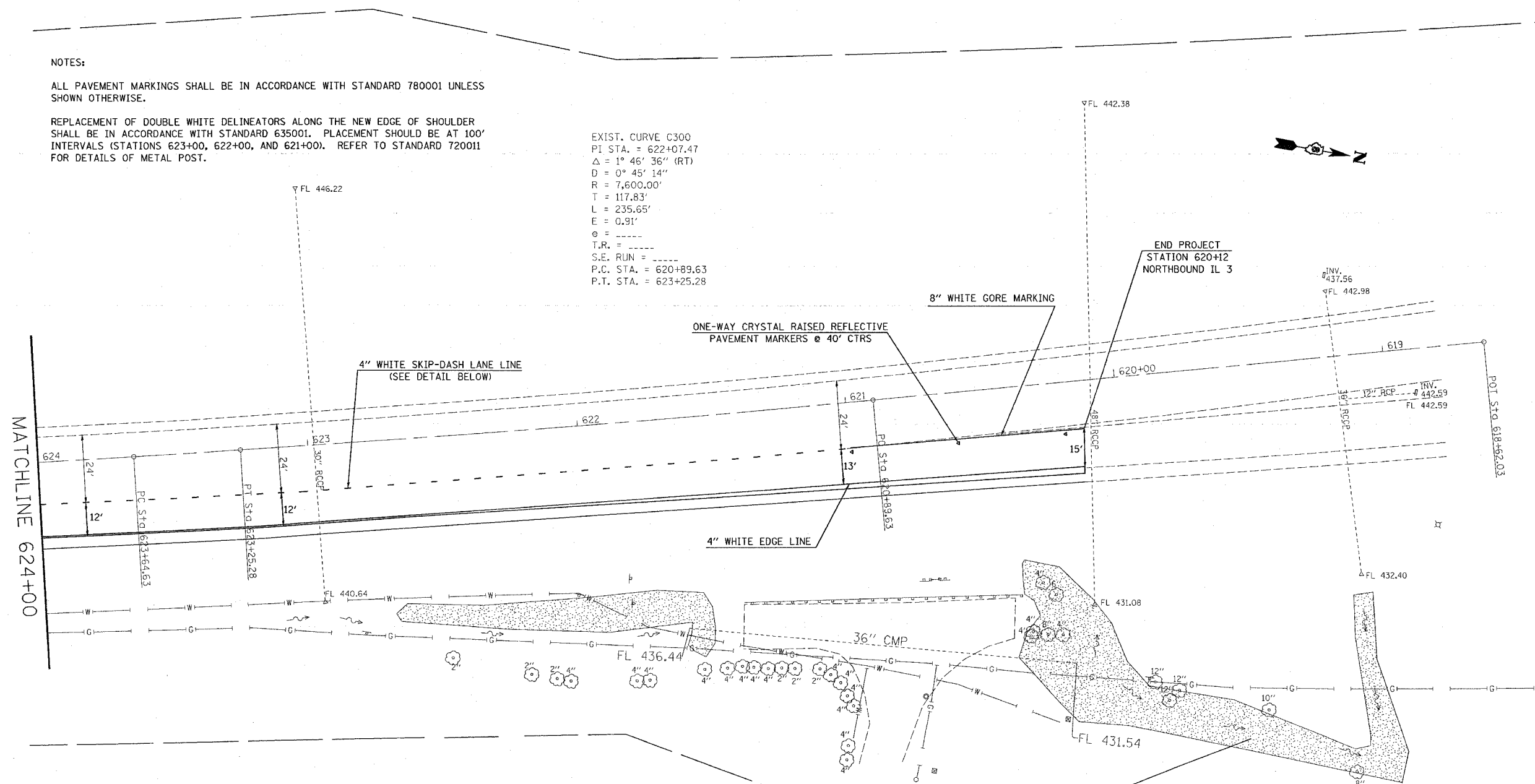
F.A.P. RTE.	SECTION	COUNTY	TOTAL SHEETS	SHEET NO.
312	66-3I	MONROE	45	29
STA. 624+00		TO STA. 620+12		
FED. ROAD DIST. NO.		ILLINOIS	FED. AID PROJECT	

NOTES:

ALL PAVEMENT MARKINGS SHALL BE IN ACCORDANCE WITH STANDARD 780001 UNLESS SHOWN OTHERWISE.

REPLACEMENT OF DOUBLE WHITE DELINEATORS ALONG THE NEW EDGE OF SHOULDER SHALL BE IN ACCORDANCE WITH STANDARD 635001. PLACEMENT SHOULD BE AT 100' INTERVALS (STATIONS 623+00, 622+00, AND 621+00). REFER TO STANDARD 720011 FOR DETAILS OF METAL POST.

EXIST. CURVE C300
 PI STA. = 622+07.47
 $\Delta = 1^\circ 46' 36''$ (RT)
 $D = 0^\circ 45' 14''$
 $R = 7,600.00'$
 $T = 117.83'$
 $L = 235.65'$
 $E = 0.91'$
 $\theta = \text{-----}$
 $T.R. = \text{-----}$
 $S.E. RUN = \text{-----}$
 $P.C. STA. = 620+89.63$
 $P.T. STA. = 623+25.28$



REVISIONS	
NAME	DATE

ILLINOIS DEPARTMENT OF TRANSPORTATION
PAVEMENT MARKING AND SIGNING PLAN
 FAP ROUTE 312
 SECTION 66-3I
 MONROE COUNTY

SCALE: VERT. _____
 HORIZ. _____

DATE _____ DRAWN BY _____
 CHECKED BY _____

PLOT DATE = #DATE#
 FILE NAME = #FILE#
 PLOT SCALE = #SCALE#
 REFERENCE = #REF#