

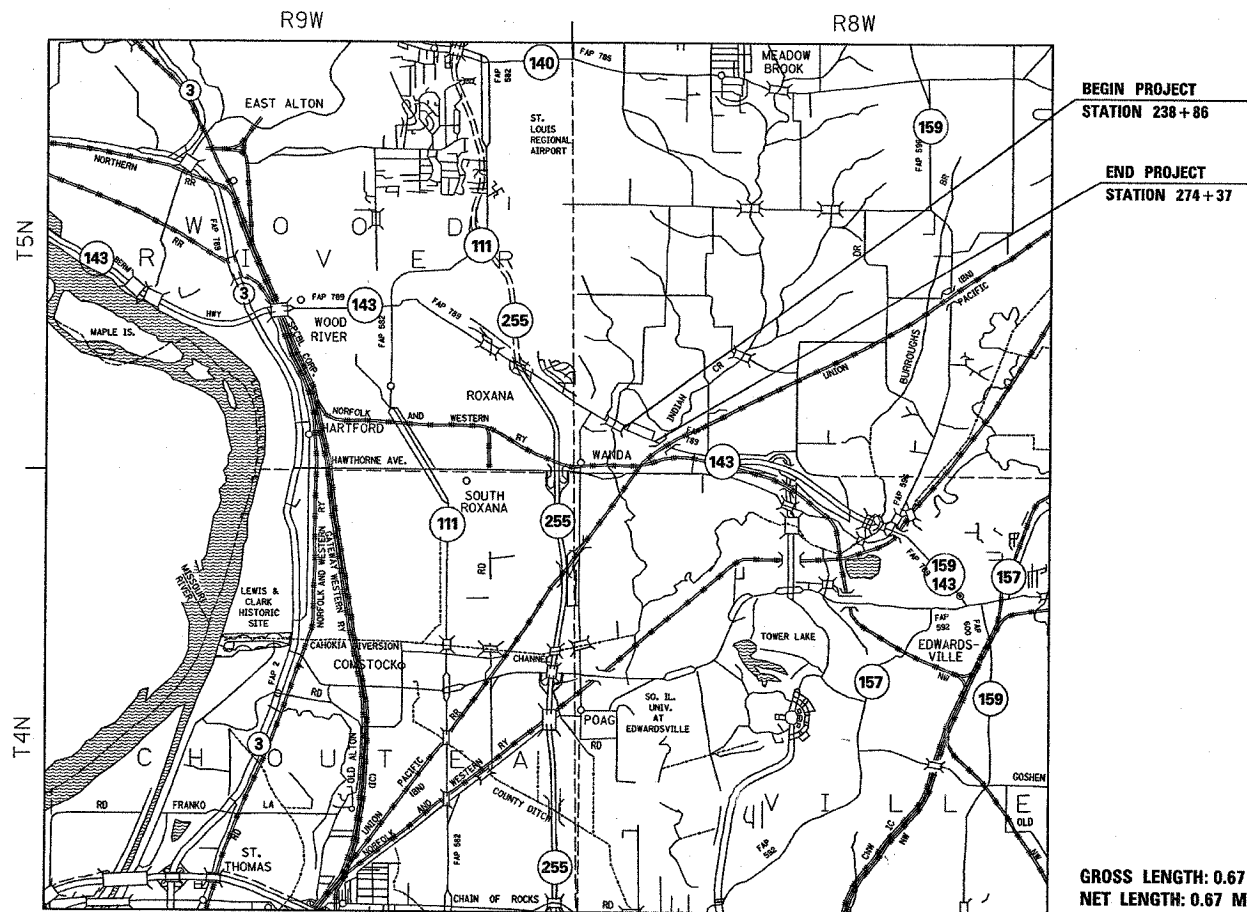
F.A.P. RTE.	SECTION	COUNTY	TOTAL SHEETS	SHEET NO.
789	125-R	MADISON	47	1

STATE OF ILLINOIS  
DEPARTMENT OF TRANSPORTATION  
DIVISION OF HIGHWAYS

**PROPOSED  
HIGHWAY PLANS**

FAP ROUTE 789 (IL ROUTE 143)  
SECTION 125-R  
PROJECT: HS-0789(042)  
MADISON COUNTY  
INSTALLING A BIDIRECTIONAL  
TURN LANE ON IL ROUTE 143  
C-98-126-05

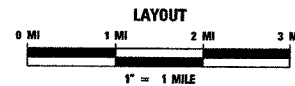
FOR INDEX OF SHEETS, SEE SHEET NO. 2



GROSS LENGTH: 0.67 MILES  
NET LENGTH: 0.67 MILES

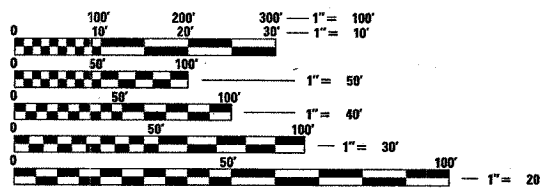
ADT	
2006	12600
2026	13900
S.U.	3.2%
M.U.	2.4%

BEGIN PROJECT LATITUDE: 38.84118 LONGITUDE: -90.03230  
END PROJECT LATITUDE: 38.83755 LONGITUDE: -90.02142



DESIGN DESIGNATION  
OTHER PRINCIPLE ARTERIAL

MICROFILMED \_\_\_\_\_  
REEL NUMBER \_\_\_\_\_  
AWARDED \_\_\_\_\_  
RESIDENT ENGINEER \_\_\_\_\_  
AS BUILT CHANGES WERE MADE  
ON THE FOLLOWING SHEETS



FULL SIZE PLANS HAVE BEEN PREPARED USING STANDARD  
ENGINEERING SCALES. REDUCED SIZED PLANS WILL NOT  
CONFORM TO STANDARD SCALES. IN MAKING MEASUREMENTS  
ON REDUCED PLANS, THE ABOVE SCALES MAY BE USED.

J.U.L.I.E.  
JOINT UTILITY LOCATION INFORMATION FOR EXCAVATION  
1-800-892-0123

CONTRACT NO. 76958

PROJECT ENGINEER: WENDA SOUTHERLAND (618) 346-3159  
SQUAD LEADER: GREG HANCOCK (618) 346-3195

STATE OF ILLINOIS  
DEPARTMENT OF TRANSPORTATION  
DIVISION OF HIGHWAYS

SUBMITTED February 24 20 06  
Mary C. Zanic  
DEPUTY DIRECTOR OF HIGHWAYS  
REGION FIVE ENGINEER

March 24 20 06  
Mike Hine  
ENGINEER OF DESIGN AND ENVIRONMENT

March 24 20 06  
Milton P. Sosa, P.E.  
DIRECTOR, DIVISION OF HIGHWAYS

**PRINTED BY THE AUTHORITY  
OF THE STATE OF ILLINOIS**