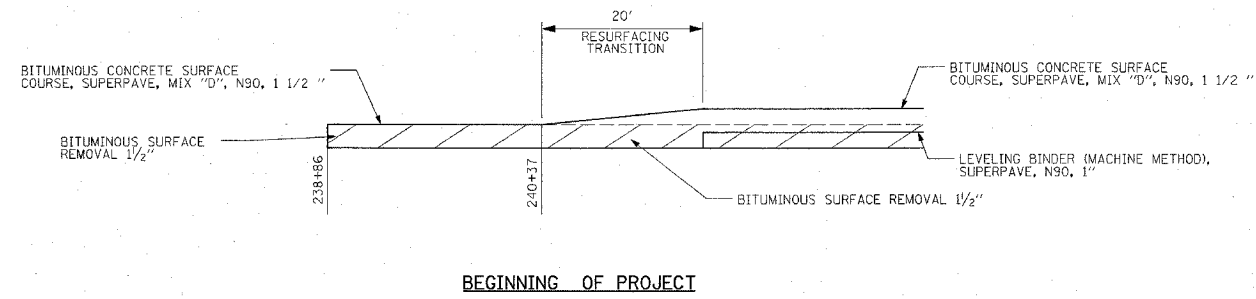
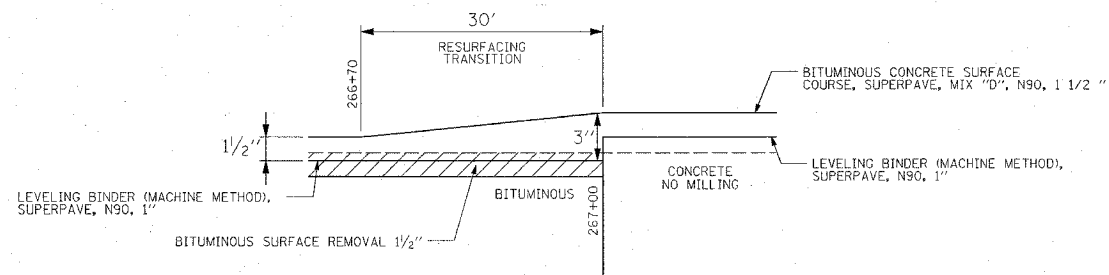


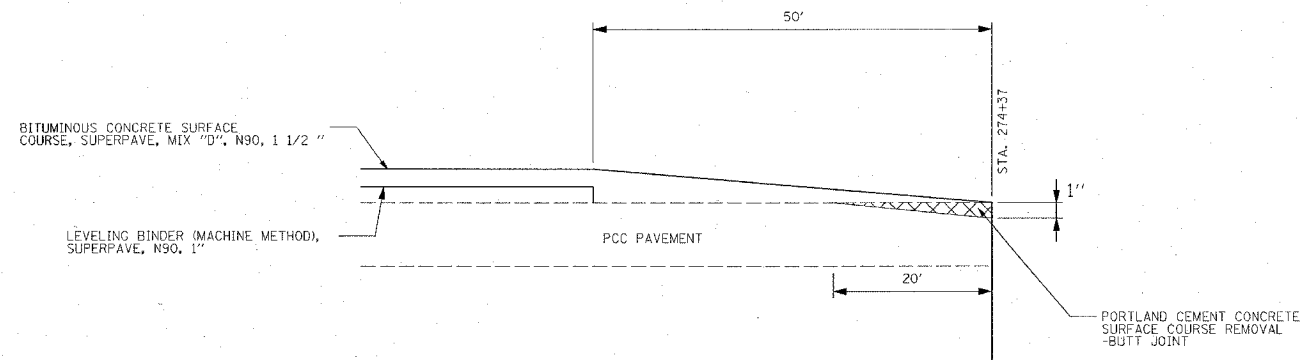
F.A.P. RTE.	SECTION	COUNTY	TOTAL SHEETS	SHEET NO.
789	125-R	MADISON	47	34
STA.		TO STA.		
FED. ROAD DIST. NO.	ILLINOIS	FED. AID PROJECT		



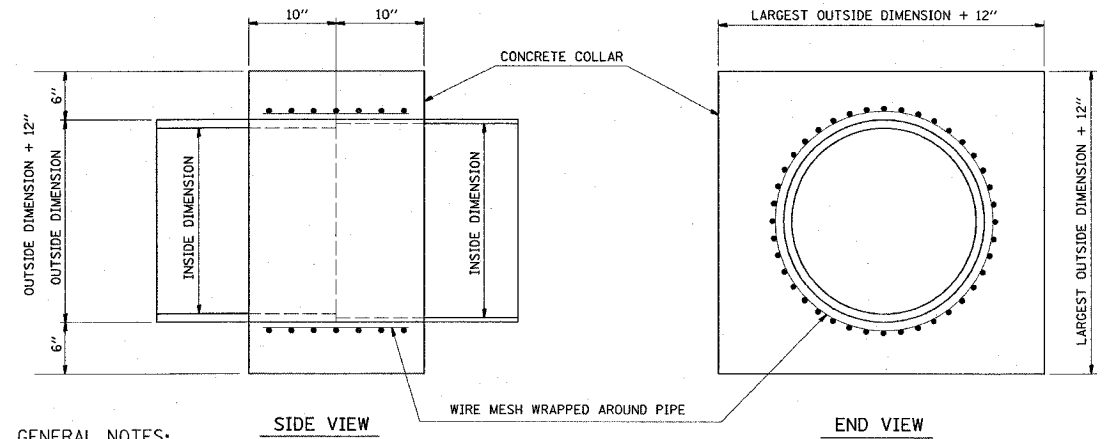
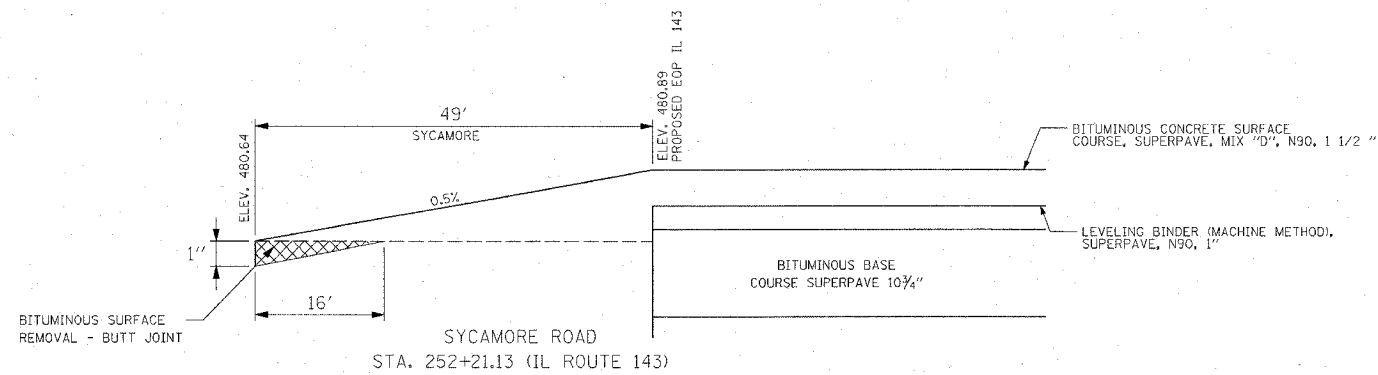
BEGINNING OF PROJECT



RESURFACING TRANSITION



END OF PROJECT



GENERAL NOTES:

1. CLASS SI CONCRETE SHALL BE USED THROUGHOUT.
2. WHEN CONCRETE COLLARS ARE USED TO CONNECT PIPES OF DIFFERENT OUTSIDE DIMENSIONS, THE CONCRETE COLLAR SHALL BE FORMED USING THE LARGEST OUTSIDE DIMENSION. (SEE END VIEW)
3. THE WIRE MESH SHALL WEIGHT NOT LESS THAN 54 POUNDS PER 100 SQ. FT.
4. CONCRETE COLLARS WILL BE PAID FOR AT THE CONTRACT UNIT PRICE, CU. YD., FOR CONCRETE COLLARS INCLUDING ALL MATERIAL AND LABOR SPECIFIED TO COMPLETE THE WORK IN PLACE.

REVISIONS	
NAME	DATE

ILLINOIS DEPARTMENT OF TRANSPORTATION

MISCELLANEOUS DETAILS

FAP ROUTE 789
SECTION 125-R
MADISON COUNTY