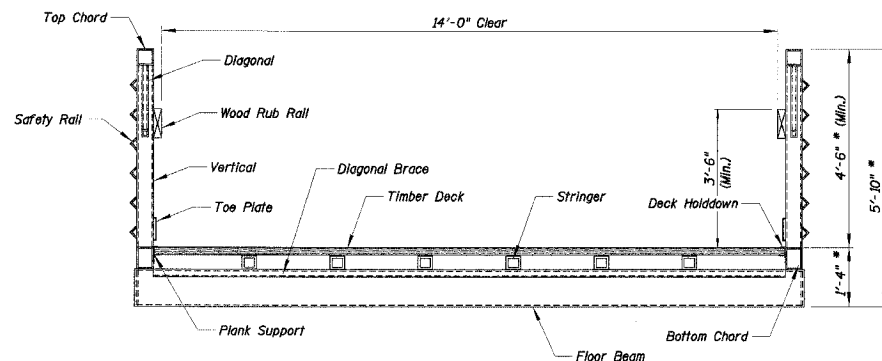


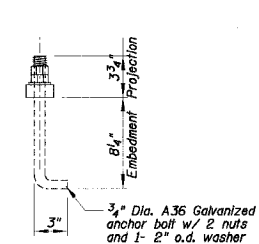
TYPICAL ABUTMENT PLAN

SCALE: 3/8" = 1'-0"



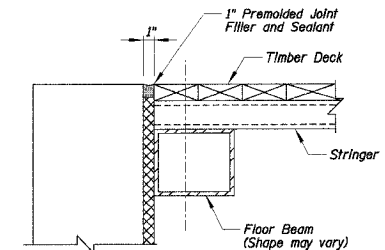
SECTION THRU PREFABRICATED BRIDGE SUPERSTRUCTURE

SCALE: 1/2" = 1'-0"



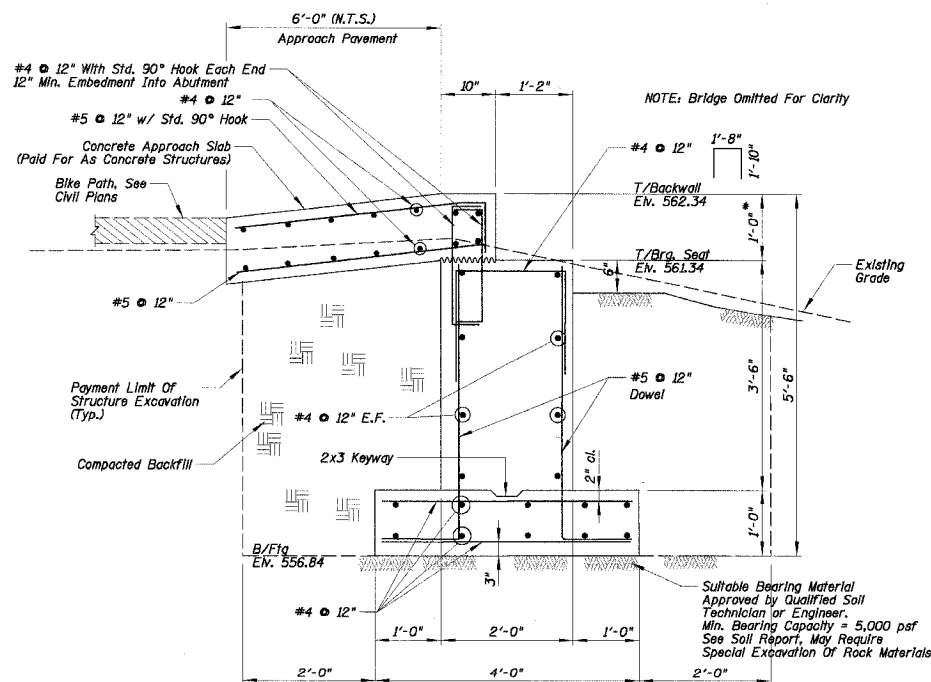
ANCHOR BOLT DETAIL

SCALE: 1 1/2" = 1'-0"



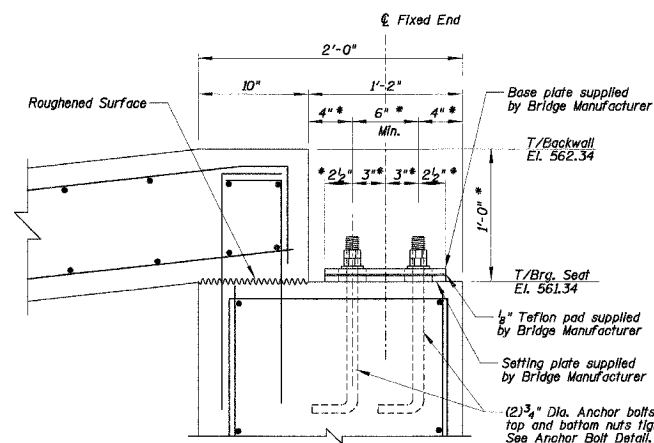
JOINT SEAL AT ABUTMENT

SCALE: 1 1/2" = 1'-0"



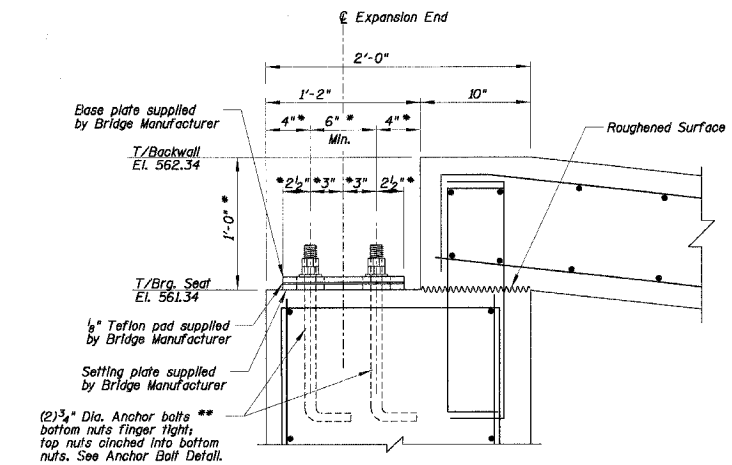
TYPICAL SECTION - ABUTMENT

SCALE: 3/4" = 1'-0"



1 FIXED BEARING DETAIL AT WEST ABUTMENT

SCALE: 1 1/2" = 1'-0"
(Shown Perpendicular To Abutment)



2 EXPANSION BEARING DETAIL AT EAST ABUTMENT

SCALE: 1 1/2" = 1'-0"
(Shown Perpendicular To Abutment)

NOTES:

- * Contractor shall coordinate this dimension with Bridge Manufacturer prior to construction.
- ** Contractor has the option of substituting anchor bolts with 4-3/4" ϕ HILTI HAS-EE AISI 304 SS Bolts embedded 6 5/8" into HIT HY 150 Injection adhesive. Bolts shall not be placed less than 5" from the edge of the structure or less than 6" apart. Contractor shall coordinate plate dimensions, bolt spacing and bolt quantity with Bridge Manufacturer prior to construction.

REVISIONS NAME	DATE
STRUCTURE REVISIONS	7/5/02

ILLINOIS DEPARTMENT OF TRANSPORTATION

PEDESTRIAN BRIDGE SECTIONS AND DETAILS

SCALE: AS SHOWN
DATE 2/1/2006

DRAWN BY PDR
CHECKED BY JPR

N:\Bids\001\BID-258\DELLWOOD\PAR\15-TRUG130125-53.PLN