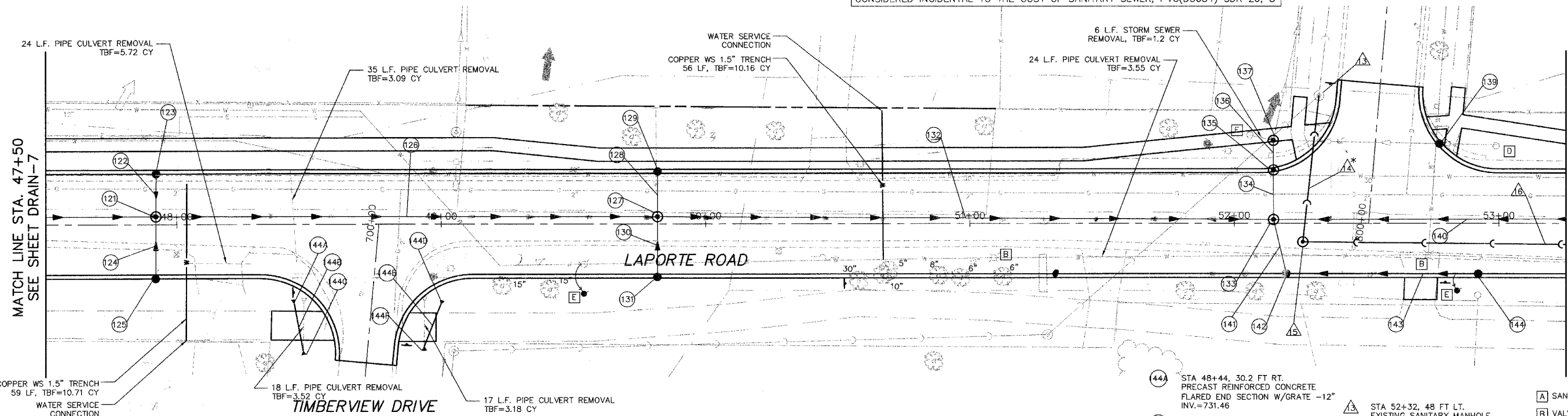


* PVC WATER MAIN QUALITY PIPE MEETING THE REQUIREMENTS OF SECTION 40 & PRESSURE TESTED PER SECTION 41 OF THE STANDARD SPECIFICATIONS FOR WATER AND SEWER MAIN CONSTRUCTION IN ILLINOIS SHALL BE PROVIDED FOR A DISTANCE OF 10 FEET TO EITHER SIDE OF THE EXISTING WATER MAIN. THIS SHALL BE CONSIDERED INCIDENTAL TO THE COST OF SANITARY SEWER, PVC(D3034) SDR 26, 8"

GREEN MEADOWS PARKWAY

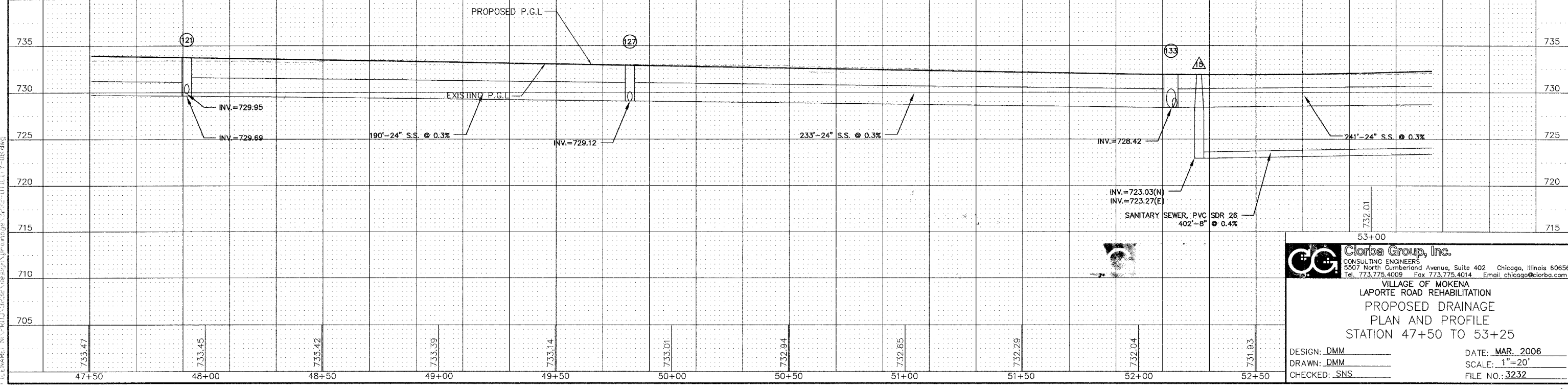
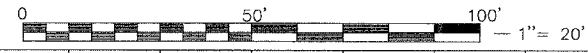
* 01-00029-00-FP



- | | | | | | | | |
|--|---|---|---|---|---|---|--|
| (121) STA 47+92, 3 FT LT. MANHOLE, T-A, 5'DIA, T-1F CL
T/F=733.75
INV.=729.69(E)(W)
INV.=729.95(N)(S) | (125) STA 47+92, 19 FT RT. CATCH BASIN, T-A, T-4 F&G
T/F=733.43
INV.=730.06 | (129) STA 49+82, 19 FT LT. CATCH BASIN, T-A, T-4 F&G
T/F=732.60
INV.=729.20 | (133) STA 52+14, 1.5 FT LT. MANHOLE, T-A, 6'DIA, T-1F CL
T/F=731.96
INV.=728.42 (N)(E)
INV.=728.73 (S) | (137) STA 52+14, 31 FT LT. MANHOLE, T-A, 5'DIA, T-1F CL
T/F=732.45
INV.=725.15(N)(EXISTING)
INV.=725.25(E)(EXISTING)
INV.=728.65(S) | (141) STORM SEWER, RG, CLASS A TYPE 1
21'-12" @ 0.5%
TBF=6.6 CY | (145) STA 48+44, 30.2 FT RT. PRECAST REINFORCED CONCRETE FLARED END SECTION W/GRATE -12"
INV.=731.46 | (149) STA 52+32, 48 FT LT. EXISTING SANITARY MANHOLE
T/F=733.04
INV.=722.71(EXISTING)(N)
INV.=722.81(S) |
| (122) STORM SEWER, RG, CLASS A TYPE 1
16'-12" @ 0.5%
TBF=4.8 CY | (126) STORM SEWER, RG, CLASS A TYPE 1
190'-24" @ 0.3%
TBF=65.2 CY | (130) STORM SEWER, RG, CLASS A TYPE 1
22'-12" @ 0.5%
TBF=6.6 CY | (134) STORM SEWER, RG, CLASS A TYPE 1
19'-24" @ 0.5%
TBF=5.0 CY | (138) NOT USED | (142) STA 52+26, 19 FT RT. CATCH BASIN, T-C, T-4 F&G
T/F=731.60
INV.=728.83 | (146) PIPE CULVERT, RG, CLASS A TYPE 1
18'-12" @ 0.17%
TBF=3.52 CY | (150) STA 48+48, 47.9 FT RT. PRECAST REINFORCED CONCRETE FLARED END SECTION W/GRATE -12"
INV.=731.49 |
| (123) STA 47+92, 19 FT LT. CATCH BASIN, T-A, T-4 F&G
T/F=733.43
INV.=730.03 | (127) STA STA 49+82, 3 FT LT. MANHOLE, T-A, 5'DIA, T-1F CL
T/F=732.92
INV.=729.12 (N)(E)
INV.=729.89 (S) | (131) STA 49+82, 19 FT RT. CATCH BASIN, T-C, T-4 F&G
T/F=732.60
INV.=730.00 | (135) STA 52+14, 19 FT LT. MANHOLE, T-A, 5'DIA, T-1F CL
T/F=731.60
INV.=728.38 | (139) STA 52+78, 28 FT LT. CATCH BASIN, T-A, T-4 F&G
T/F=731.15
INV.=726.14 | (143) STORM SEWER, RG, CLASS A TYPE 1
72'-12" @ 0.5%
TBF=17.9 CY | (147) STA 48+99, 30.5 FT RT. PRECAST REINFORCED CONCRETE FLARED END SECTION W/GRATE -12"
INV.=731.38 | (151) STA 52+26, 7 FT RT. SANITARY MANHOLE, TYPE A, 4' DIAMETER, T-1F CL
T/F=731.86
INV.=723.03(N)
INV.=723.27(E) |
| (124) STORM SEWER, RG, CLASS A TYPE 1
22'-12" @ 0.5%
TBF=6.6 CY | (128) STORM SEWER, RG, CLASS A TYPE 1
16'-12" @ 0.5%
TBF=4.8 CY | (132) STORM SEWER, RG, CLASS A TYPE 1
233'-24" @ 0.3%
TBF=71.0 CY | (136) STORM SEWER, RG, CLASS A TYPE 1
11'-12" @ 1.0%
TBF=2.3 CY | (140) STORM SEWER, RG, CLASS A TYPE 1
241'-24" @ 0.3%
TBF=263.5 CY | (144) STA 52+93, 19 FT RT CATCH BASIN, T-C, T-4 F&G
T/F=731.79
INV.=729.19 | (148) STA 48+93, 46.3 FT RT. PRECAST REINFORCED CONCRETE FLARED END SECTION W/GRATE -12"
INV.=731.55 | (152) SANITARY SEWER, PVC SDR 26
55'-8" @ 0.4%
TBF=120.1 CY |

- [A] SANITARY MANHOLES TO BE ADJUSTED
- [B] VALVE VAULTS TO BE ADJUSTED
- [C] INLETS TO BE ADJUSTED
- [D] CATCH BASINS TO BE ADJUSTED
- [E] FIRE HYDRANTS TO BE RELOCATED
- [F] REMOVING CATCH BASINS
- [G] VALVE BOXES TO BE ADJUSTED
- [H] REMOVING MANHOLES

DRAIN-8



CC Clorba Group, Inc.
CONSULTING ENGINEERS
5507 North Cumberland Avenue, Suite 402 Chicago, Illinois 60656
Tel. 773.775.4009 Fax 773.775.4014 Email: chicago@clorba.com

VILLAGE OF MOKENA
LAPORTE ROAD REHABILITATION
PROPOSED DRAINAGE
PLAN AND PROFILE
STATION 47+50 TO 53+25

DESIGN: DMM
DRAWN: DMM
CHECKED: SNS

DATE: MAR. 2006
SCALE: 1"=20'
FILE NO.: 3232

PLOT DATE: Apr 13, 2006 9:50am
 FILENAME: N:\PROJECTS\2006\1113\1113.dwg