

118+2 = 120

F.A.U. ROUTE	SECTION	COUNTY	TOTAL SHEETS	SHEET NO.
0306	*	WILL	118	1
FHWA REGION NO. ILLINOIS		PROJECT M-8003(200)		
* 01-00029-00-FP		CONTRACT NO. 83825		

STATE OF ILLINOIS DEPARTMENT OF TRANSPORTATION

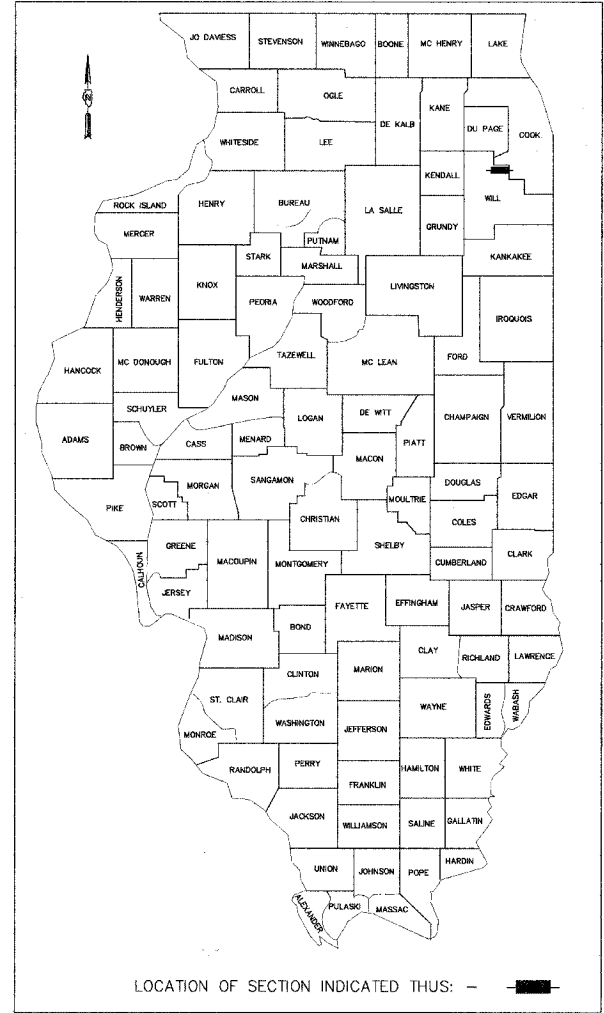
PLANS FOR PROPOSED LOCAL AGENCY IMPROVEMENT FEDERAL-AID URBAN PROJECT

**F.A.U. ROUTE 0306 (LAPORTE ROAD)
LAPORTE ROAD RECONSTRUCTION
VILLAGE SECTION: 01-00029-00-FP
WOLF ROAD (F.A.U. 2688) TO KIRKSTONE WAY
PROJECT M - 8003(200)
VILLAGE OF MOKENA
WILL COUNTY
JOB NO. C-91-162-02**

VILLAGE MAYOR
JOSEPH WERNER

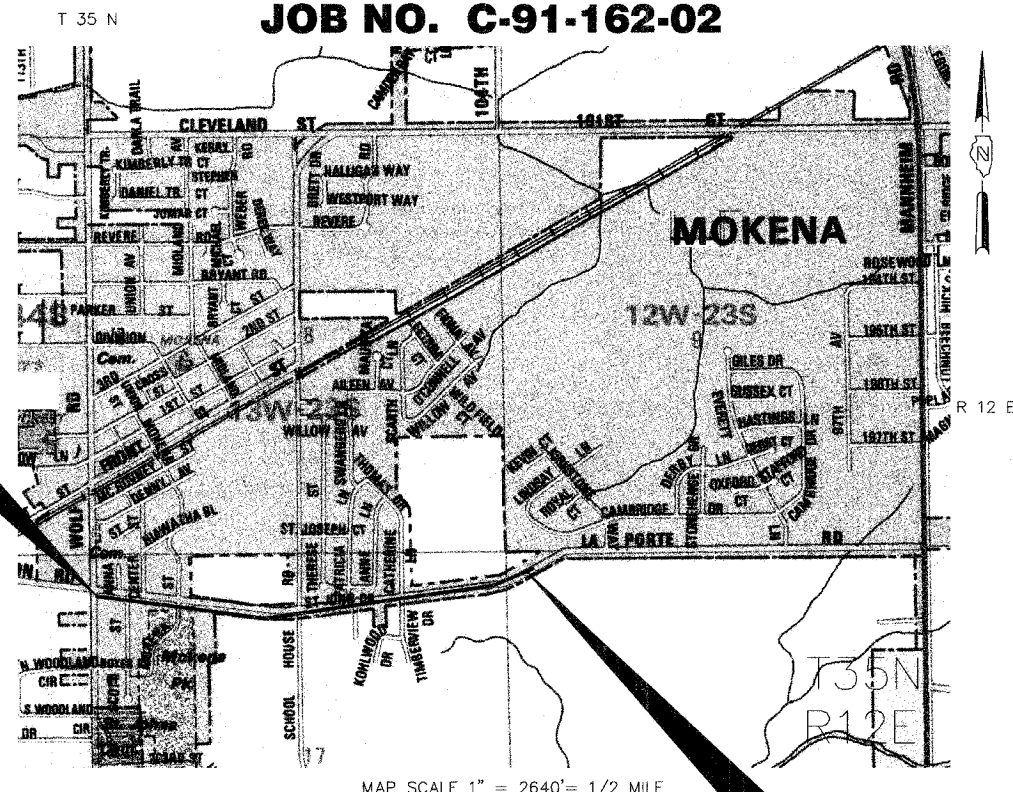
VILLAGE CLERK
ROBYN MADDEN

VILLAGE TRUSTEES
JOHN J. MAZZORANA
JOSEPH SIWINSKI
LAURA RUSINIAK
DONALD D. LABRIOLA
GEORGE METANIAS
JANE MCGINN



- INDEX OF SHEETS**
- 1 COVER SHEET, INDEX OF SHEETS AND HIGHWAY STANDARDS
 - 2 GENERAL NOTES
 - 3-4 SUMMARY OF QUANTITIES
 - 5-6 TYPICAL SECTIONS
 - 7-8 SCHEDULE OF QUANTITIES
 - 9-11 ALIGNMENT AND TIES
 - 12-22 EXISTING AND PROPOSED PLAN AND PROFILE SHEETS
 - 23-40 SUGGESTED STAGES OF CONSTRUCTION AND TRAFFIC CONTROL
 - 41-47 EROSION CONTROL AND LANDSCAPING PLANS
 - 48-58 PROPOSED DRAINAGE PLAN AND PROFILE
 - 59-64 PLAT OF HIGHWAY PLANS
 - 65-71 PROPOSED STRIPING AND SIGNING PLAN
 - 72-88 PROPOSED LIGHTING PLAN
 - 89-90 DRIVEWAY DETAILS (BD-01 & BD-02)
 - 91 OUTLET FOR CONCRETE CURB AND GUTTER (BD-03)
 - 92 STORM SEWER CONNECTION TO EXISTING SEWER (BD-07)
 - 93 DISTRICT ONE TYPICAL PAVEMENT MARKINGS (TC-13)
 - 94 DETAILS
 - 95-118 LAPORTE ROAD CROSS SECTIONS

- LIST OF HIGHWAY STANDARDS**
- 000001-04 ABBREVIATIONS, SYMBOLS AND PATTERNS
 - 280001-02 TEMPORARY EROSION CONTROL SYSTEMS
 - 424001-04 CURB RAMP FOR SIDEWALKS
 - 442201-01 CLASS C AND D PATCHES
 - 542001 REINFORCED CONCRETE END SECTIONS WITH PARALLEL WINGWALLS FOR FOR PIPE CULVERTS 300MM (12") THRU 1200MM (48") DIAMETER AT RIGHT ANGLES WITH ROADWAY.
 - 542301 PRECAST REINFORCED CONCRETE FLARED END SECTION
 - 602001 CATCH BASIN, TYPE A
 - 602011 CATCH BASIN, TYPE C
 - 602301-01 INLET, TYPE A
 - 602401-01 MANHOLE, TYPE A
 - 602406-02 MANHOLE, TYPE A, 1800MM (72") DIAMETER
 - 602501 VALVE VAULT, TYPE A
 - 602601 PRECAST REINFORCED CONCRETE FLAT SLAB TOP
 - 604016-01 FRAME AND GRATE, TYPE 4
 - 604036-01 GRATE, TYPE 8
 - 606001-02 CONCRETE CURB TYPE B AND COMBINATION CONCRETE CURB AND GUTTER
 - 701501-03 URBAN LANE CLOSURE, 2L, 2W UNDIVDED
 - 701801-03 LANE CLOSURE MULTILANE 1W OR 2W CROSSWALK OR SIDEWALK CLOSURE
 - 702001-06 TRAFFIC CONTROL DEVICES
 - 720001 SIGN PANEL MOUNTING DETAILS
 - 720006 SIGN PANEL ERECTION DETAILS
 - 780001-01 TYPICAL PAVEMENT MARKINGS



LOCATION MAP

NET LENGTH OF IMPROVEMENTS : 5850 L.F. = 1.11 MILES

Ciorba Group, Inc.
DESIGN FIRM
REGISTRATION NUMBER
* 184-001016 *

MARK R. JOHNSON
REGISTERED PROFESSIONAL ENGINEER
CHICAGO, ILLINOIS 60656 - (773) 775-4009

DATE: 12/20/2005
EXPIRATION DATE: 11/30/2007

APPROVED 12/21/05 2005
Joseph Werner
VILLAGE ENGINEER VILLAGE OF MOKENA

APPROVED JANUARY 12 2006
John J. Mazzorana
DISTRICT ENGINEER OF LOCAL ROAD & STREETS

APPROVED Jan. 12 2006
Diane M. O'Keefe
DEPUTY DIRECTOR OF HIGHWAYS REGION ENGINEER

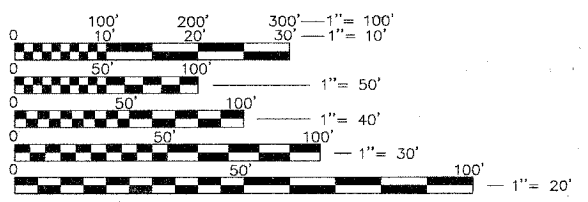
STATE OF ILLINOIS
DEPARTMENT OF TRANSPORTATION

PLANS PREPARED BY:
Ciorba Group, Inc.
CONSULTING ENGINEERS
5507 NORTH CUMBERLAND AVENUE :: CHICAGO, ILLINOIS 60656 :: (773) 775-4009

PRINTED BY THE AUTHORITY OF THE STATE OF ILLINOIS

FEDERAL AID DESIGN ENGINEER: JESSICA MILLER (847) 705-4487
CONSULTANT: CIORBA GROUP, INC. (773) 775-4009
PLOT DATE: Dec 29, 2003
FILE NAME: N:\PROJ\32332-TITLE-SHEET.DWG

CONTRACT NO. 83825



FULL SIZED PLANS HAVE BEEN PREPARED USING STANDARD ENGINEERING SCALES. REDUCED SIZED PLANS WILL NOT CONFORM TO STANDARD SCALES. IN MAKING MEASUREMENTS ON REDUCED PLANS, THE ABOVE SCALES MAY BE USED.