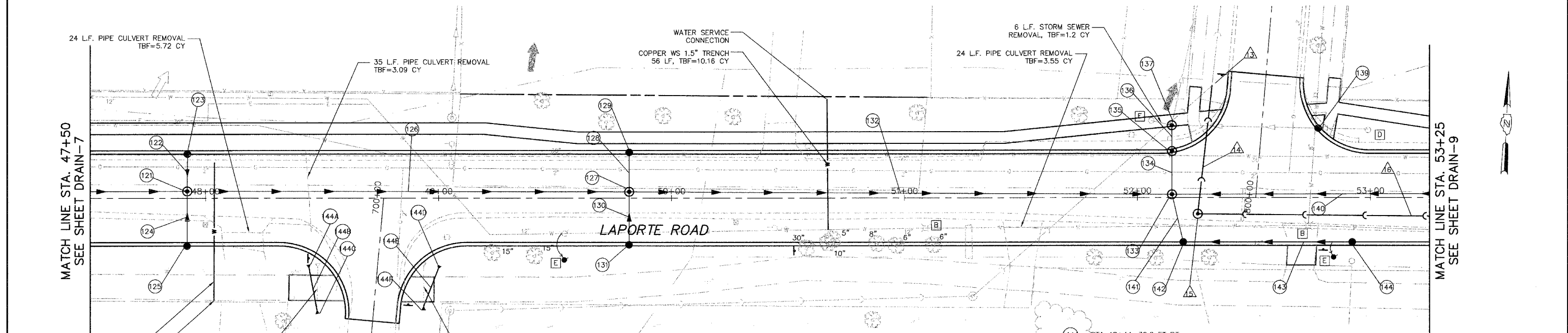
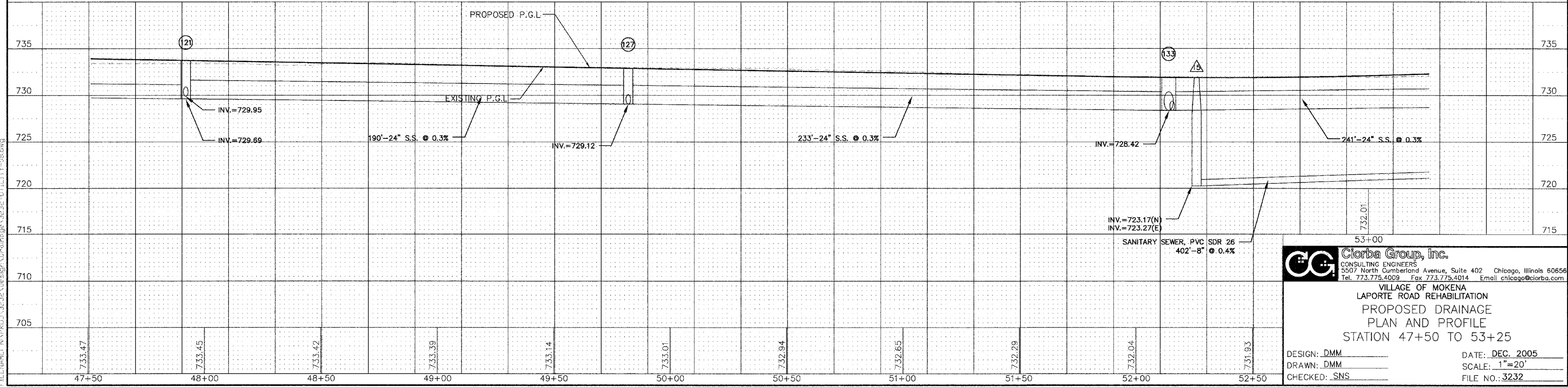


GREEN MEADOWS PARKWAY * 01-00029-00-FP



- | | | | | | | | | | | | | | | | | | | | | | | | | | | | | | | | | | | | | | |
|--|---|---|---|---|--|---|---|---|---|---|---|---|---|--|---|---|----------------|---|--|---|---|--|---|---|--|---|---|---|---|--------------------------------------|---------------------------------|---------------------------|---------------------------------|-----------------------------------|---------------------------|--------------------------------|-----------------------|
| (121) STA 47+92, 3 FT LT. MANHOLE, T-A, 5'DIA, T-1F CL
T/F=733.75
INV.=729.69(E)(W)
INV.=729.95(N)(S) | (122) STORM SEWER, RG, CLASS A TYPE 1
16'-12" @ 0.5%
TBF=4.8 CY | (123) STA 47+92, 19 FT LT. CATCH BASIN, T-A, T-4 F&G
T/F=733.43
INV.=730.03 | (124) STORM SEWER, RG, CLASS A TYPE 1
22'-12" @ 0.5%
TBF=6.6 CY | (125) STA 47+92, 19 FT RT. CATCH BASIN, T-A, T-4 F&G
T/F=733.43
INV.=730.06 | (126) STORM SEWER, RG, CLASS A TYPE 1
19'-12" @ 0.3%
TBF=65.2 CY | (127) STA STA 49+82, 3 FT LT. MANHOLE, T-A, 5'DIA, T-1F CL
T/F=732.92
INV.=729.12 (N)(E)
INV.=729.89 (S) | (128) STORM SEWER, RG, CLASS A TYPE 1
16'-12" @ 0.5%
TBF=4.8 CY | (129) STA 49+82, 19 FT LT. CATCH BASIN, T-A, T-4 F&G
T/F=732.60
INV.=729.20 | (130) STORM SEWER, RG, CLASS A TYPE 1
22'-12" @ 0.5%
TBF=6.6 CY | (131) STA 49+82, 19 FT RT. CATCH BASIN, T-C, T-4 F&G
T/F=732.60
INV.=730.00 | (132) STORM SEWER, RG, CLASS A TYPE 1
233'-24" @ 0.3%
TBF=71.0 CY | (133) STA 52+14, 1.5 FT LT. MANHOLE, T-A, 6'DIA, T-1F CL
T/F=731.96
INV.=728.42 (N)(E)
INV.=728.73 (S) | (134) STORM SEWER, RG, CLASS A TYPE 1
19'-24" @ 0.5%
TBF=5.0 CY | (135) STA 52+14, 19 FT LT. MANHOLE, T-A, 5'DIA, T-1F CL
T/F=731.60
INV.=728.36 | (136) STORM SEWER, RG, CLASS A TYPE 1
11'-12" @ 1.0%
TBF=2.3 CY | (137) STA 52+14, 31 FT LT. MANHOLE, T-A, 5'DIA, T-1F CL
T/F=732.45
INV.=725.15(N)(EXISTING)
INV.=725.25(E)(EXISTING)
INV.=728.65(S) | (138) NOT USED | (139) STA 52+78, 28 FT LT. CATCH BASIN, T-A, T-4 F&G
T/F=731.15
INV.=726.14 | (140) STORM SEWER, RG, CLASS A TYPE 1
241'-24" @ 0.3%
TBF=263.5 CY | (141) STORM SEWER, RG, CLASS A TYPE 1
21'-12" @ 0.5%
TBF=6.6 CY | (142) STA 52+26, 19 FT RT. CATCH BASIN, T-C, T-4 F&G
T/F=731.60
INV.=728.83 | (143) STORM SEWER, RG, CLASS A TYPE 1
72'-12" @ 0.5%
TBF=17.9 CY | (144) STA 52+93, 19 FT RT. CATCH BASIN, T-C, T-4 F&G
T/F=731.79
INV.=729.19 | (44A) STA 48+44, 30.2 FT RT. PRECAST REINFORCED CONCRETE FLARED END SECTION W/GRATE -12"
INV.=731.46 | (44B) PIPE CULVERT, RG, CLASS A TYPE 1
18'-12" @ 0.17%
TBF=3.52 CY | (44C) STA 48+48, 47.9 FT RT. PRECAST REINFORCED CONCRETE FLARED END SECTION W/GRATE -12"
INV.=731.49 | (44D) STA 48+99, 30.5 FT RT. PRECAST REINFORCED CONCRETE FLARED END SECTION W/GRATE -12"
INV.=731.38 | (44E) PIPE CULVERT, RG, CLASS A TYPE 1
17'-12" @ 1.0%
TBF=3.18 CY | (44F) STA 48+93, 46.3 FT RT. PRECAST REINFORCED CONCRETE FLARED END SECTION W/GRATE -12"
INV.=731.55 | (A) SANITARY MANHOLES TO BE ADJUSTED | (B) VALVE VAULTS TO BE ADJUSTED | (C) INLETS TO BE ADJUSTED | (D) CATCH BASINS TO BE ADJUSTED | (E) FIRE HYDRANTS TO BE RELOCATED | (F) REMOVING CATCH BASINS | (G) VALVE BOXES TO BE ADJUSTED | (H) REMOVING MANHOLES |
|--|---|---|---|---|--|---|---|---|---|---|---|---|---|--|---|---|----------------|---|--|---|---|--|---|---|--|---|---|---|---|--------------------------------------|---------------------------------|---------------------------|---------------------------------|-----------------------------------|---------------------------|--------------------------------|-----------------------|



CG **Corba Group, Inc.**
 CONSULTING ENGINEERS
 5307 North Cumberland Avenue, Suite 402 Chicago, Illinois 60656
 Tel. 773.775.4009 Fax 773.775.4014 Email chicago@corba.com

VILLAGE OF MOKENA
 LAPORTE ROAD REHABILITATION
 PROPOSED DRAINAGE
 PLAN AND PROFILE
 STATION 47+50 TO 53+25

DESIGN: DMM
 DRAWN: DMM
 CHECKED: SNS

DATE: DEC. 2005
 SCALE: 1"=20'
 FILE NO.: 3232

PLU: JAL: Dec 22, 2005 - 4:14pm
 FILENAME: N:\PROJ\3232\Design\Drawings\3232-UTILITY-08.dwg