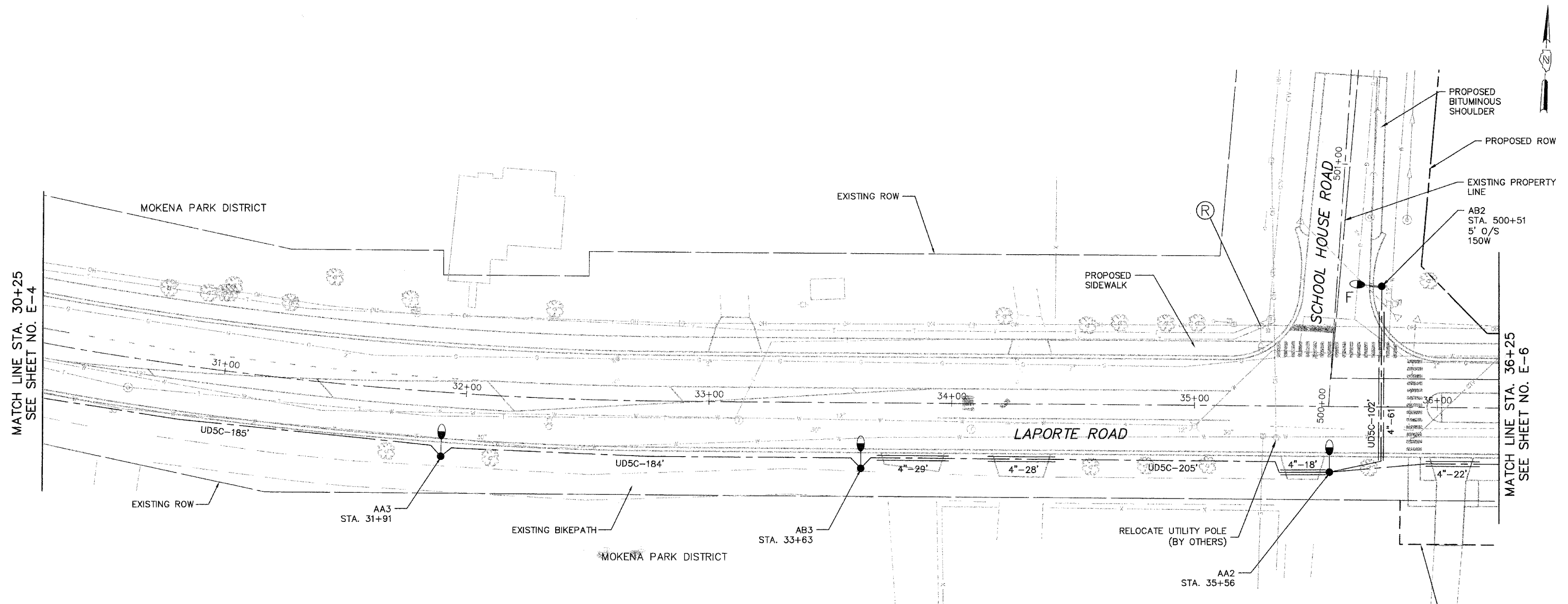


FAH ROUTE	SECTION	COUNTY	TOTAL SHEETS	SHEET NO.
0306	*	WILL.	118	76
FHWA REGION NO.	ILLINOIS	PROJECT M-	8003(200)	
* 01-00029-00-FP			CONTRACT NO. 83825	



MATCH LINE STA. 30+25
SEE SHEET NO. E-4

MATCH LINE STA. 36+25
SEE SHEET NO. E-6



LEGEND

- LIGHT POLE, 35' M.H., 10' MAST ARM, AND LUMINAIRE, 200W, UNLESS OTHERWISE NOTED
- UTILITY POLE MOUNTED MAST ARM, LUMINAIRE TO BE REMOVED BY OTHERS
- EXISTING LIGHT POLE, SIZE AS NOTED
- UD5C-10' UNIT DUCT WITH 4-1/C NO. 4 AND 1/C NO. 6 GROUND 600V (EPR-TYPE RHW) 1-1/2" POLYTHYLENE AND LENGTH AS NOTED
- 4"-10' GALVANIZED STEEL CONDUIT, PUSHED, DIAMETER AND LENGTH AS NOTED
- PROPOSED LIGHTING CONTROLLER, 120/240V, 100A
- PROPOSED SERVICE CONNECTION
- OFFSET FOUNDATION

NOTES

1. ALL POLES SHALL BE OFFSET 8' FROM EDGE OF PAVEMENT TO CENTER OF POLE, UNLESS OTHERWISE NOTED.
2. EXISTING UTILITY POLE MOUNTED LUMINAIRES SHALL REMAIN IN USE DURING CONSTRUCTION.

E-5

ML11.DAT11, Dec 22, 2005 - 5:14pm
 FILENAME: N:\PROJECTS\3232\Design\Lighting\3232-1.LIGHT-05.dwg

Ciorba Group, Inc.
 CONSULTING ENGINEERS
 5507 North Cumberland Avenue, Suite 402 Chicago, Illinois 60656
 Tel. 773.775.4008 Fax 773.775.4014 Email chicago@ciorba.com

VILLAGE OF MOKENA
 LAPORTE ROAD REHABILITATION
 LAPORTE ROAD IMPROVEMENTS
 LIGHTING PLAN
 STATION 30+25 TO 36+25

DESIGN: KDM	DATE: DEC. 2005
DRAWN: KDM	SCALE: 1"=20'
CHECKED: JMV	FILE NO.: 3232