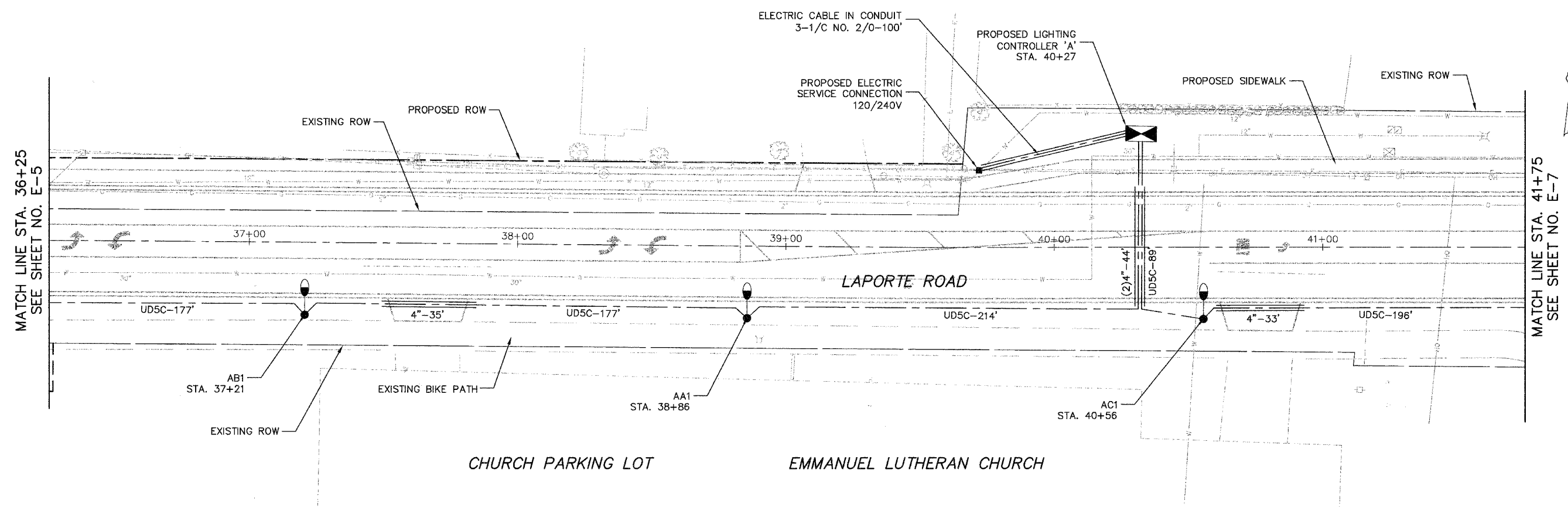


FEED ROUTE	SECTION	COUNTY	TOTAL SHEETS	SHEET NO.
0306	*	WILL	118	77
FHWA REGION NO.	ILLINOIS	PROJECT M-8003(200)		
* 01-00029-00-FP			CONTRACT NO. 83825	



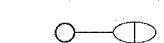
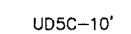
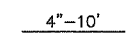


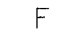


MATCH LINE STA. 36+25
SEE SHEET NO. E-5

MATCH LINE STA. 41+75
SEE SHEET NO. E-7



LEGEND

-  LIGHT POLE, 35' M.H., 10' MAST ARM, AND LUMINAIRE, 200W, UNLESS OTHERWISE NOTED
-  UTILITY POLE MOUNTED MAST ARM, LUMINAIRE TO BE REMOVED BY OTHERS
-  EXISTING LIGHT POLE, SIZE AS NOTED
-  UD5C-10' UNIT DUCT WITH 4-1/C NO. 4 AND 1/C NO. 6 GROUND 600V (EPR-TYPE RHW) 1-1/2\"/>
-  4\"/>
-  PROPOSED LIGHTING CONTROLLER, 120/240V, 100A
-  PROPOSED SERVICE CONNECTION
-  OFFSET FOUNDATION

NOTES

1. ALL POLES SHALL BE OFFSET 8' FROM EDGE OF PAVEMENT TO CENTER OF POLE, UNLESS OTHERWISE NOTED.
2. EXISTING UTILITY POLE MOUNTED LUMINAIRES SHALL REMAIN IN USE DURING CONSTRUCTION.

E-6



Clorba Group, Inc.
CONSULTING ENGINEERS
5507 North Cumberland Avenue, Suite 402 Chicago, Illinois 60666
Tel. 773.775.4009 Fax 773.775.4014 Email: chicago@clorba.com

VILLAGE OF MOKENA
LAPORTE ROAD REHABILITATION
LAPORTE ROAD IMPROVEMENTS
LIGHTING PLAN
STATION 36+25 TO 41+75

DESIGN: KDM _____ DATE: DEC. 2005 _____
DRAWN: KDM _____ SCALE: 1"=20' _____
CHECKED: JMV _____ FILE NO.: 3232 _____

M:\111\11111\11111.dwg
 FILENAME: M:\111\11111\11111.dwg
 LIGHTING\3232-LIGHT-06.dwg