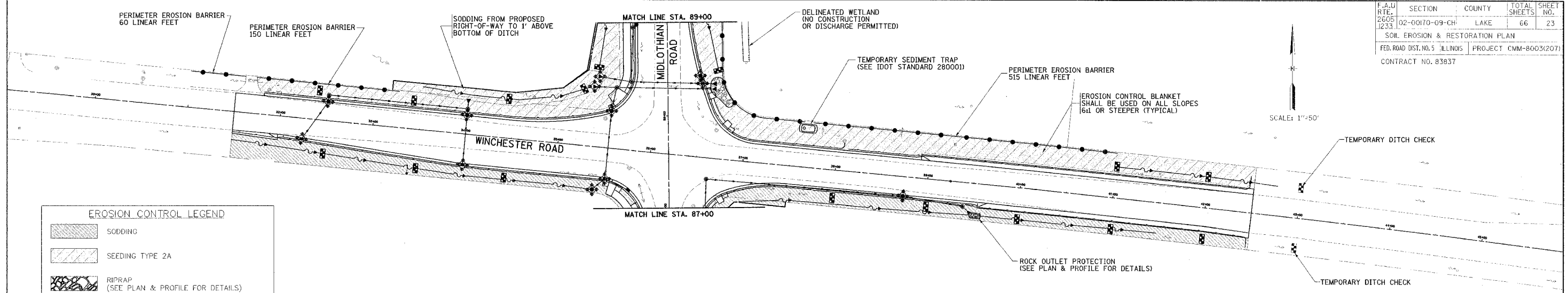


F.A.U. RTE.	SECTION	COUNTY	TOTAL SHEETS	SHEET NO.
2605 J233	02-00170-09-CH	LAKE	66	23
SOIL EROSION & RESTORATION PLAN				
FED. ROAD DIST. NO. 5 ILLINOIS			PROJECT CMM-8003(207)	
CONTRACT NO. 83837				



**EROSION CONTROL LEGEND**

- SODDING
- SEEDING TYPE 2A
- RIPRAP (SEE PLAN & PROFILE FOR DETAILS)
- PERIMETER EROSION BARRIER
- TEMPORARY SEDIMENT TRAP
- DITCH CHECK
- INLET PROTECTION, SPECIAL
- FLOW DIRECTION (SEE CROSS SECTIONS FOR DETAILS)
- PROPOSED STORM SEWER (SEE PLAN & PROFILE FOR DETAILS)

