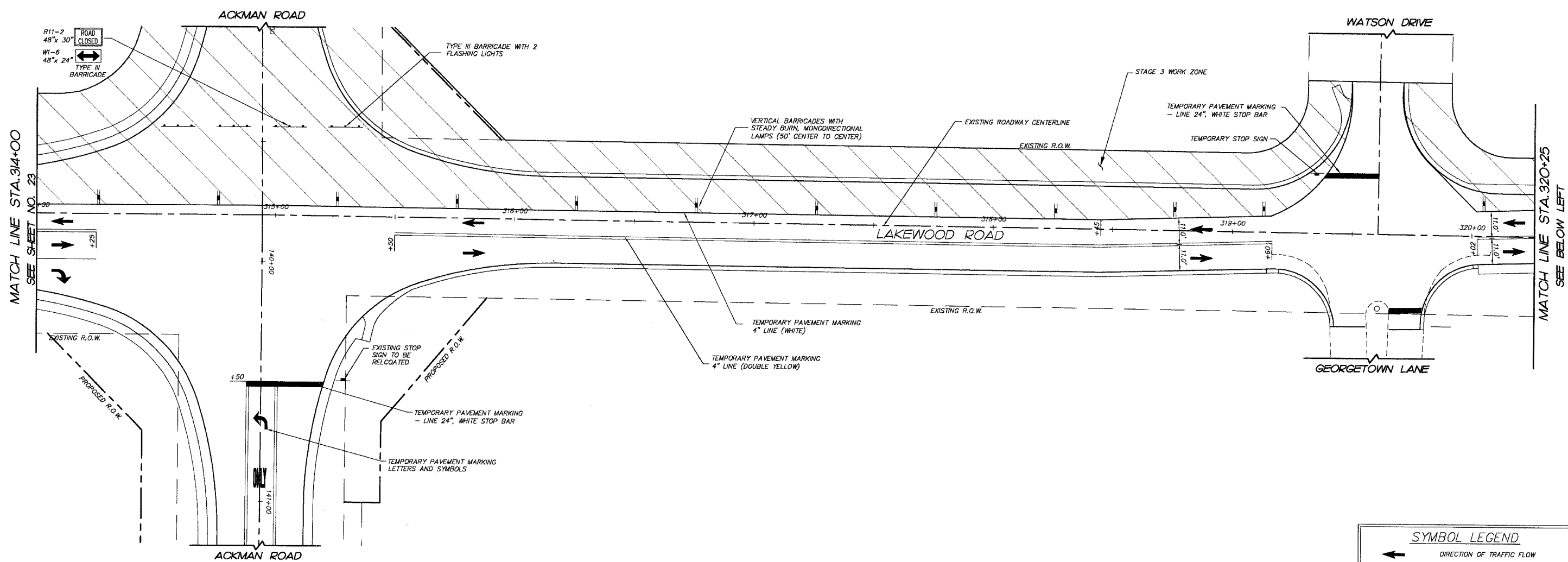


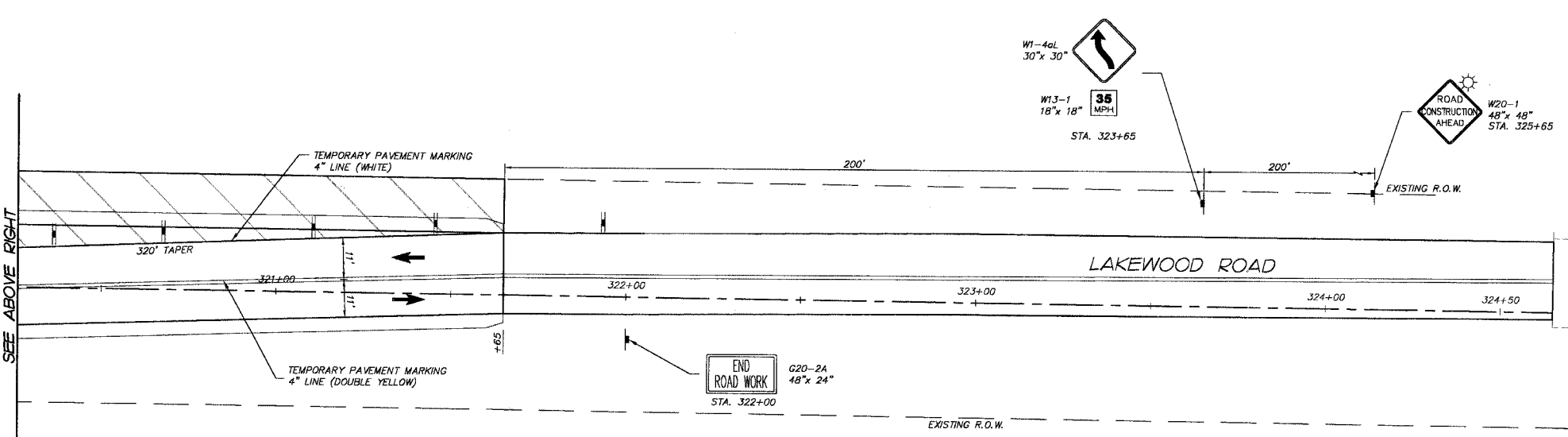
F.A.U. RTE.	SECTION	COUNTY	TOTAL SHEETS	SHEET NO.
3873 00-00243-00-FP		MCHENRY	84	24
STA.	314+00	TO STA.	324+50	
FED. ROAD DIST. NO. 1	ILLINOIS	HIGHWAY PROJECT		



MATCH LINE STA. 314+00  
SEE SHEET NO. 23

MATCH LINE STA. 320+25  
SEE BELOW LEFT

MATCH LINE STA. 320+25  
SEE ABOVE RIGHT



	DIRECTION OF TRAFFIC FLOW
	TYPE III BARRICADE WITH 2 FLASHING LIGHTS
	TEMPORARY PAVEMENT
	TEMPORARY ACCESS
	STAGE 3 WORK ZONE
	TEMPORARY SIGNAGE (SEE PLAN FOR TYPE, SIZE AND LOCATION)
	TYPE II BARRICADE WITH STEADY BURN, MONODIRECTIONAL LAMPS
	VERTICAL PANEL WITH STEADY BURN, MONODIRECTIONAL LAMPS
	DIRECTIONAL INDICATOR BARRICADE WITH STEADY BURN, MONODIRECTIONAL LAMPS (25' CENTER TO CENTER)
	STEADY BURNING AMBER BEACON

NO.	NAME	DATE
7.		
6.		
5.		
4.		
3.		
2.		
1.		

**SMITH ENGINEERING CONSULTANTS, INC.**  
 CIVIL/STRUCTURAL ENGINEERS AND SURVEYORS  
 4600 PRIME PARKWAY, SUITE 201  
 MCHENRY, ILLINOIS 60050  
 P.E. 815-385-1778 FAX: 815-385-1781  
 www.smithengineering.com E-MAIL: sec@smithengineering.com  
 MCHENRY HUNTERVILLE YORKVILLE  
 ILLINOIS PROFESSIONAL DESIGN FIRM # 184-000108

MCHENRY COUNTY DIVISION OF TRANSPORTATION  
 ACKMAN ROAD EXTENSION

SUGGESTED CONSTRUCTION STAGING  
 FOR LAKEWOOD ROAD  
 STAGE 3

SCALE: 1"=20'  
 DATE 10-05-2005  
 DRAWN BY MRJ  
 CHECKED BY GFR

PLOT FILE: STANDARD  
 VIEW: STAGE III CE-24  
 COMP. FILE: 03210-618-1.dwg