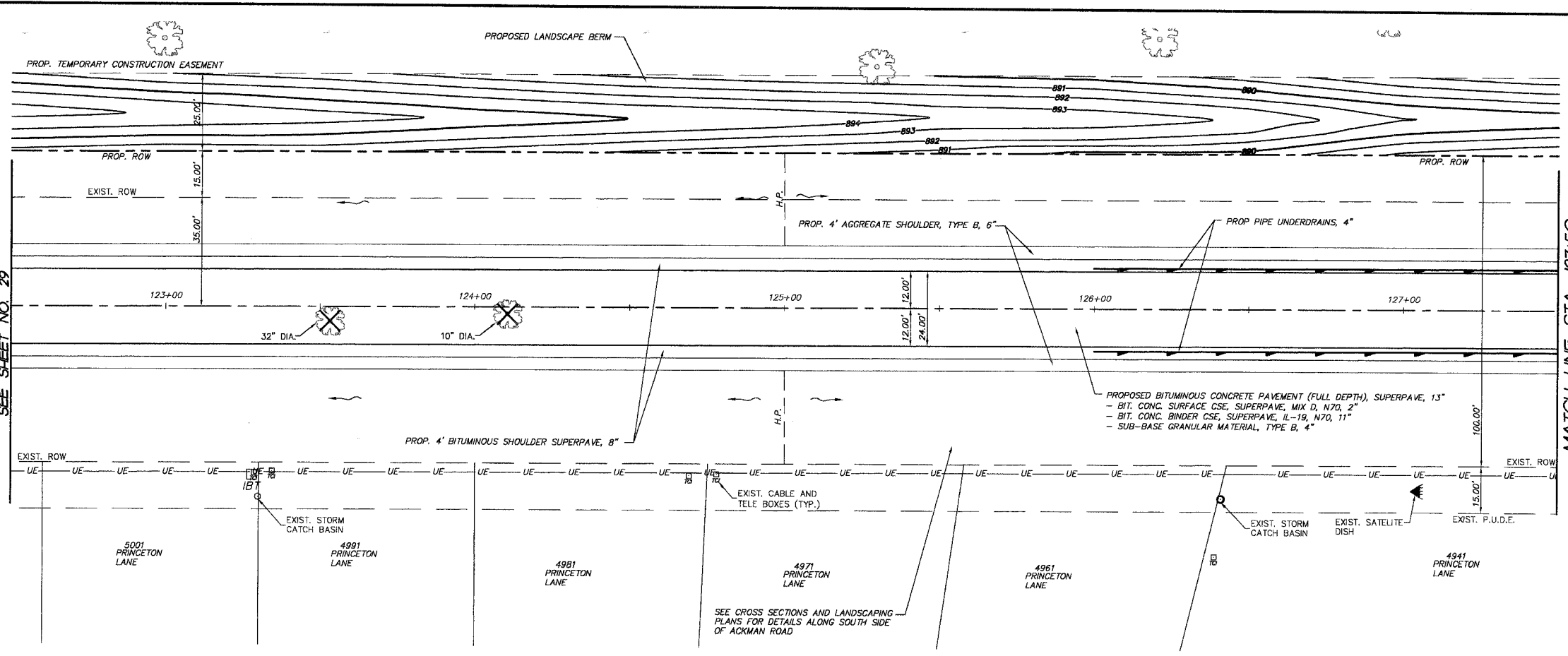


F.A.P. RTE.	SECTION	COUNTY	TOTAL SHEETS	SHEET NO.
3873	00-00243-00-FP	MCHENRY	84	30
STA. 122+50	TO STA. 127+50			
FED. ROAD DIST. NO.	ILLINOIS	HIGHWAY PROJECT		
83840				

FINAL SURVEY NO.	DATE
SURVEY PLOTTED	
NOTE BOOK	
TEMPLATE AREAS CHECKED	

MATCH LINE STA. 122+50
SEE SHEET NO. 29

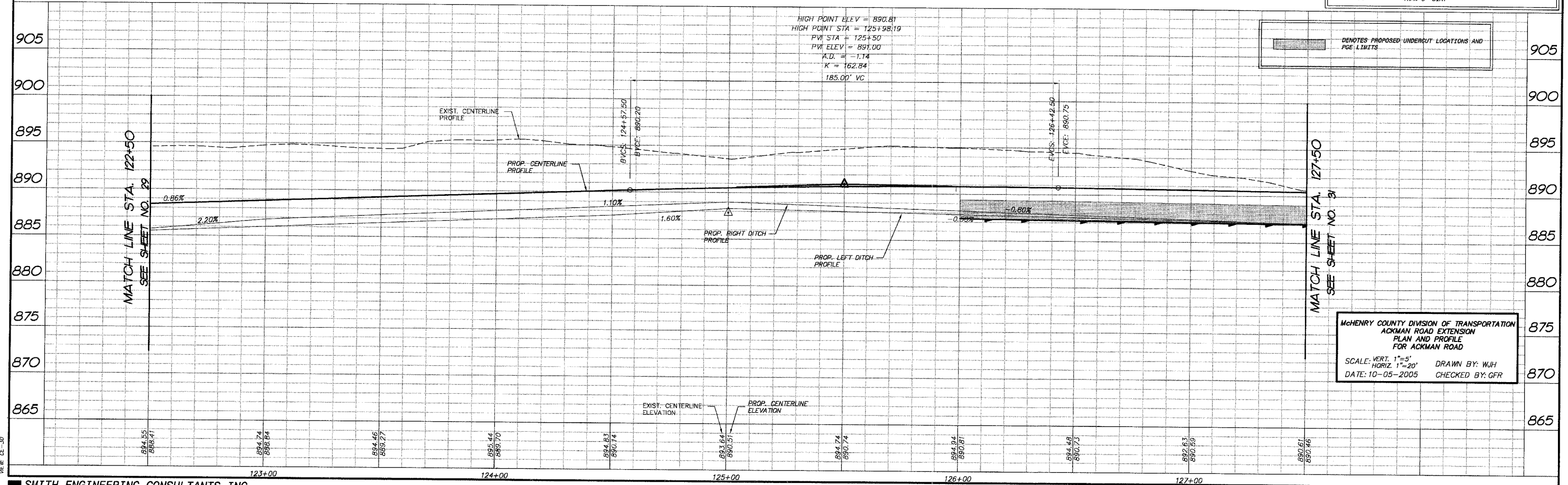
MATCH LINE STA. 127+50
SEE SHEET NO. 31



PROJECT LEGEND:

- DENOTES PROPOSED BITUMINOUS PAVEMENT REMOVAL, (FULL DEPTH)
- DENOTES PROPOSED BITUMINOUS SURFACE REMOVAL 1 1/2\"/>

Ackman Road



MCHENRY COUNTY DIVISION OF TRANSPORTATION
ACKMAN ROAD EXTENSION
PLAN AND PROFILE
FOR ACKMAN ROAD
SCALE: VERT. 1"=5'
HORIZ. 1"=20'
DATE: 10-05-2005
DRAWN BY: WJH
CHECKED BY: GFR

COMP. FILE: 030210-602A.dwg
DATE: 10-05-05
DRAWN BY: WJH
CHECKED BY: GFR