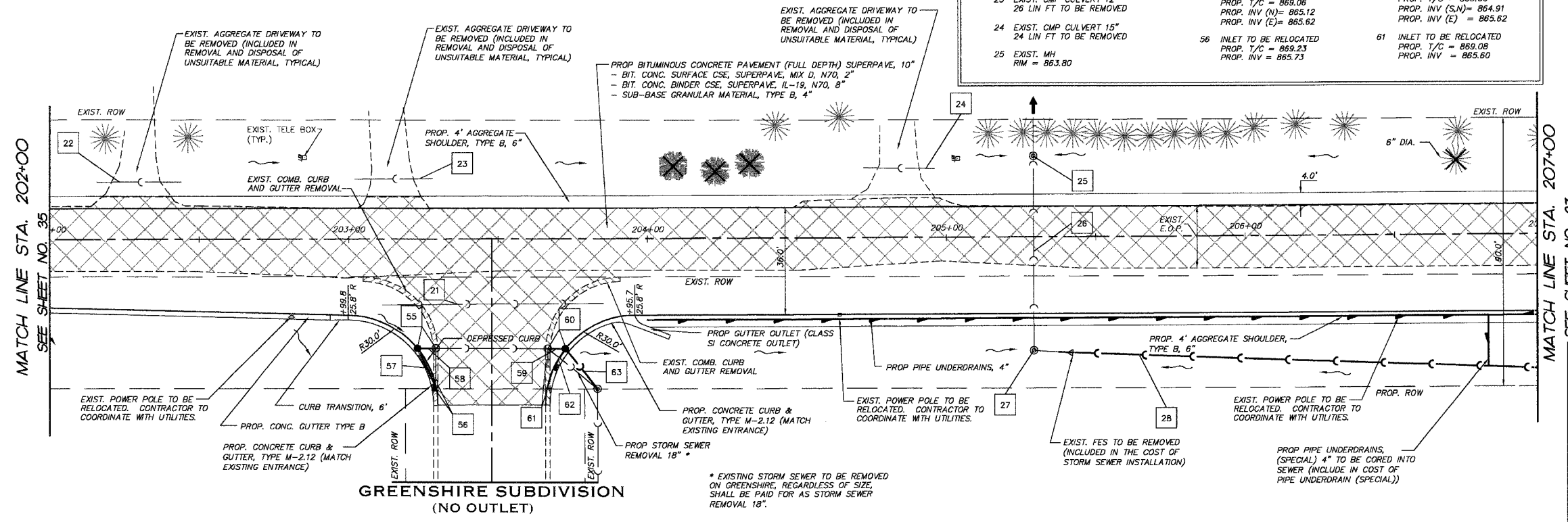


FINAL SURVEYED	DATE
SURVEY PLOTTED	BY
NOTE BOOK	
TEMPLATE	
AREAS	
CHECKED	
NO.	

F.A.P. RTE.	SECTION	COUNTY	TOTAL SHEETS	SHEET NO.
3873	00-00243-00-FP	MCHENRY	84	36
STA.	202+00	TO STA.	207+00	
FED. ROAD DIST. NO.	ILLINOIS HIGHWAY PROJECT		83840	

#	STORM SEWER TAGS	#	STORM SEWER TAGS
21	EXIST. CMP CULVERT 15" TO BE REMOVED, 60 LIN FT	57	PROP. SS CL A 1 12" 11 LIN FT @ 0.50%
22	EXIST. CMP CULVERT 15" TO BE REMOVED, 25 LIN FT	58	PROP. SS CL A 1 18" 6 LIN FT @ 0.50%
23	EXIST. CMP CULVERT 12" 26 LIN FT TO BE REMOVED	59	PROP. SS CL A 1 18" 6 LIN FT @ 0.50%
24	EXIST. CMP CULVERT 15" 24 LIN FT TO BE REMOVED	60	CATCH BASIN TO BE RELOCATED PROP. T/C = 869.06 PROP. INV (N) = 865.12 PROP. INV (E) = 865.62
25	EXIST. MH RIM = 863.80	61	INLET TO BE RELOCATED PROP. T/C = 869.08 PROP. INV = 865.60
26	EXIST. STORM SEWER 18"		
27	EXIST. STORM MH RIM = 864.80 INV N = 861.66		
28	PROP. SS RG CL A 1 18" 220 LIN FT @ 0.36%		
55	CATCH BASIN TO BE RELOCATED PROP. T/C = 869.06 PROP. INV (N) = 865.12 PROP. INV (E) = 865.62		
56	INLET TO BE RELOCATED PROP. T/C = 869.23 PROP. INV = 865.73		

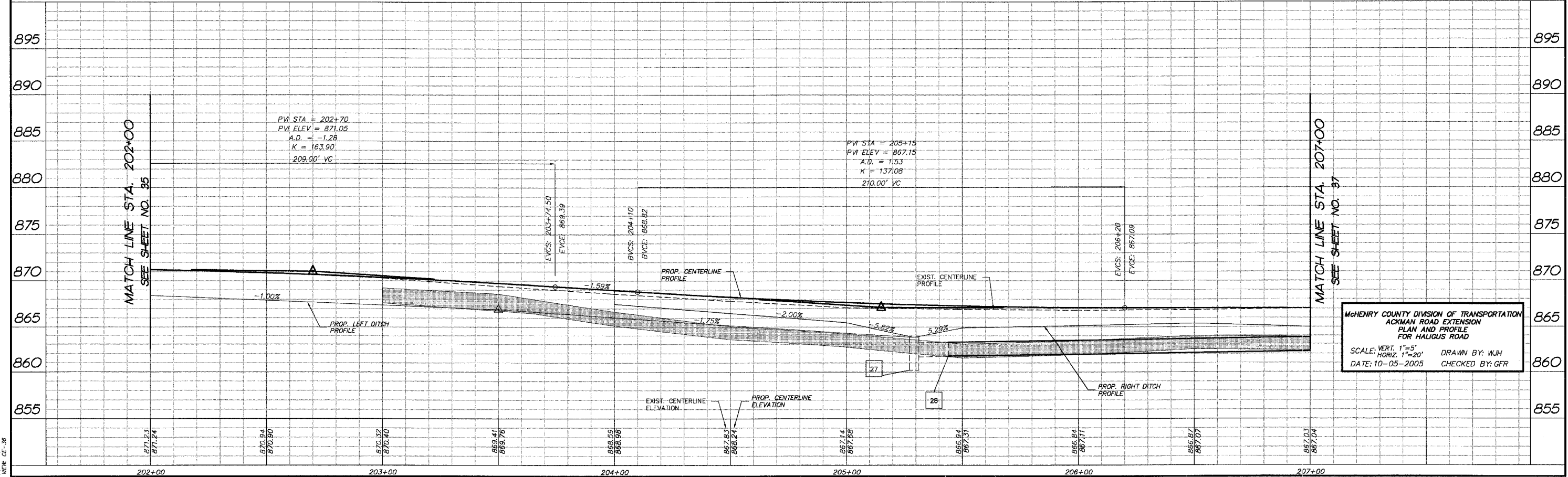
#	STORM SEWER TAGS
62	PROP. SS CL A 1 12" 8 LIN FT @ 0.50%
63	PROP. SS CL A 1 24" 13 LIN FT @ 0.30%



PROJECT LEGEND:

- DENOTES PROPOSED BITUMINOUS PAVEMENT REMOVAL, (FULL DEPTH)
- DENOTES PROPOSED BITUMINOUS SURFACE REMOVAL 1/2" & BITUMINOUS RESURFACING
- DENOTES AREA OF TRENCH BACKFILL
- DENOTES PERIMETER EROSION BARRIER (SILT FENCE), INLET & PIPE PROTECTION AND DITCH CHECK
- DENOTES PROPOSED DRAINAGE DIRECTION ARROW
- DENOTES PROPOSED OVERFLOW DIRECTION ARROW
- DENOTES EXIST. TREES TO BE REMOVED GREATER THAN 6" DIA.
- DENOTES EXIST. TREES TO BE REMOVED LESS THAN 6" DIA.

HALIGUS ROAD



MCHENRY COUNTY DIVISION OF TRANSPORTATION
 ACKMAN ROAD EXTENSION
 PLAN AND PROFILE FOR HALIGUS ROAD
 SCALE: VERT. 1"=5' DRAWN BY: WJH
 DATE: 10-05-2005 CHECKED BY: GFR

COMP. FILE: 032010-0024.dwg
 PLOT FILE: MECH CE-36