

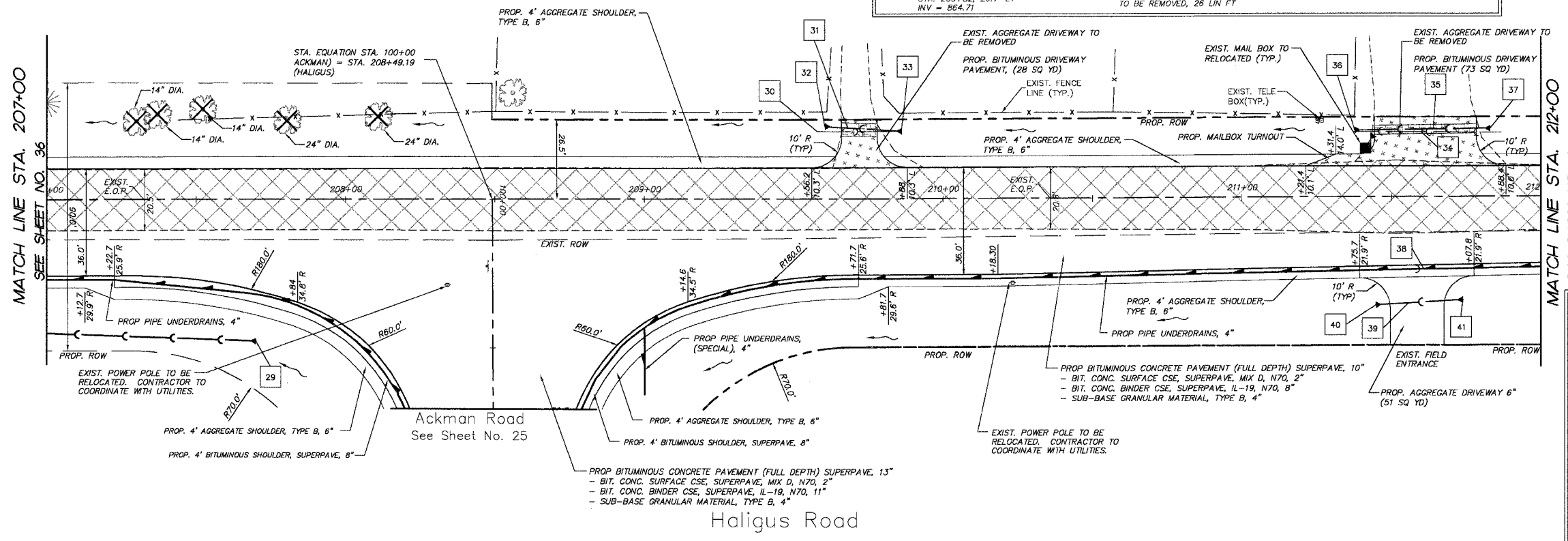
F.A.P. RTE.	SECTION	COUNTY	TOTAL SHEETS	SHEET NO.
3873	00-00243-00-FP	MCHENRY	84	37
STA. 207+00 TO STA. 212+00				
FED. ROAD DIST. NO.		ILLINOIS HIGHWAY PROJECT		
83840				



# STORM SEWER TAGS			
29	PROP. PRC FES 18" STA. 207+70, 48' RT INV = 862.50	34	EXIST. CMP CULVERT 12" TO BE REMOVED, 50 LIN FT
30	EXIST. CMP CULVERT 12" TO BE REMOVED, 27 LIN FT	35	43 LIN FT PIPE CULV CL D 1 ERS 15" @ 1.75% (TBF = 4.0 CU YD)
31	22 LIN FT PIPE CULV CL D 1 15" @ 1.80% (TBF = 5.0 CU YD)	36	ALUMINUM END SECTIONS ERS 15" STA. 211+38, 22.3' LT INV = 867.53
32	ALUMINUM END SECTIONS, 15" STA. 209+60, 27.0' LT INV = 864.35	37	ALUMINUM END SECTIONS ERS 15" STA. 211+84, 23.0' LT INV = 868.79
33	ALUMINUM END SECTIONS, 15" STA. 209+82, 26.7' LT INV = 864.71	38	EXIST. CMP CULVERT 12" TO BE REMOVED, 26 LIN FT
39	29 LIN FT PIPE CULV CL D 1 15" @ 3.30% (TBF = 2.4 CU YD)	40	ALUMINUM END SECTIONS 15" STA. 211+44, 36.5' RT INV = 868.55
41	ALUMINUM END SECTIONS 15" STA. 211+73, 34.8' RT INV = 869.50		

LIMITS OF BITUMINOUS CONCRETE PAVEMENT (FULL DEPTH) SUPERPAVE, 13" ON HALIGUS ROAD IS STA 207+22 TO STA. 209+72. OUTSIDE OF THOSE LIMITS, BITUMINOUS CONCRETE PAVEMENT (FULL DEPTH) SUPERPAVE, 10" SHALL BE CONSTRUCTED.

***** DENOTES PROPOSED BITUMINOUS DRIVEWAY PAVEMENT

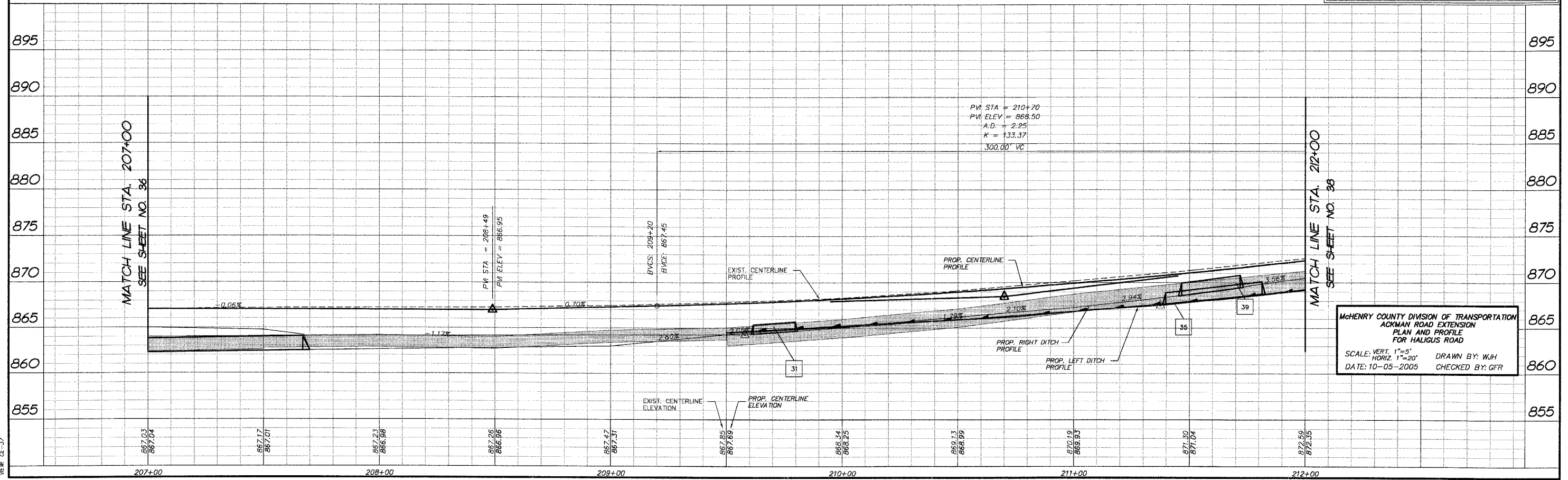


PROJECT LEGEND:

- DENOTES PROPOSED BITUMINOUS PAVEMENT REMOVAL, (FULL DEPTH)
- DENOTES PROPOSED BITUMINOUS SURFACE REMOVAL 1/2" & BITUMINOUS RESURFACING
- DENOTES AREA OF TRENCH BACKFILL
- DENOTES PERIMETER EROSION BARRIER (SILT FENCE), INLET & PIPE PROTECTION AND DITCH CHECK
- DENOTES PROPOSED DRAINAGE DIRECTION ARROW
- DENOTES PROPOSED OVERFLOW DIRECTION ARROW
- DENOTES EXIST. TREES TO BE REMOVED GREATER THAN 6" DIA.
- DENOTES EXIST. TREES TO BE REMOVED LESS THAN 6" DIA.

BY	DATE

FINAL SURVEY PLOTTED
NOTE BOOK TEMPLATE
AREAS CHECKED
NO.



MCHENRY COUNTY DIVISION OF TRANSPORTATION
ACKMAN ROAD EXTENSION
PLAN AND PROFILE FOR HALIGUS ROAD
SCALE: VERT. 1"=5'
HORIZ. 1"=20'
DATE: 10-05-2005
DRAWN BY: W/J
CHECKED BY: GFR

COMP. FILE: 030210-602H.dwg
REV: 02-37