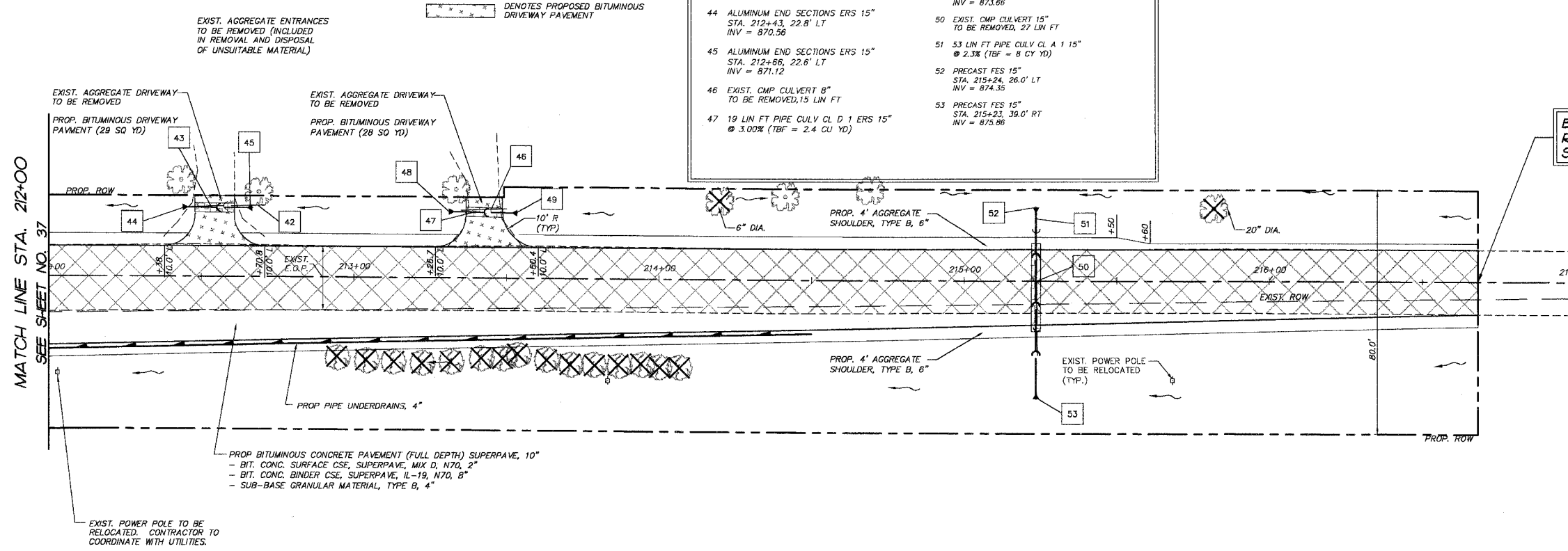


F.A.P. RTE.	SECTION	COUNTY	TOTAL SHEETS	SHEET NO.
3873	00-00243-00-FP	MCHENRY	84	38
STA. 212+00 TO STA. 216+68.27				
FED. ROAD DIST. NO. 83840		ILLINOIS HIGHWAY PROJECT		

#	STORM SEWER TAGS
42	EXIST. CMP CULVERT 12" TO BE REMOVED, 26 LIN FT
43	19 LIN FT PIPE CULV CL D 1 ERS 15" @ 3.00% (TBF = 2.5 CU YD)
44	ALUMINUM END SECTIONS ERS 15" STA. 212+43, 22.8' LT INV = 870.56
45	ALUMINUM END SECTIONS ERS 15" STA. 212+66, 22.6' LT INV = 871.12
46	EXIST. CMP CULVERT 8" TO BE REMOVED, 15 LIN FT
47	19 LIN FT PIPE CULV CL D 1 ERS 15" @ 3.00% (TBF = 2.4 CU YD)
48	ALUMINUM END SECTIONS ERS 15" STA. 213+31, 21.5' LT INV = 873.05
49	ALUMINUM END SECTIONS ERS 15" STA. 213+53, 21.1' LT INV = 873.56
50	EXIST. CMP CULVERT 15" TO BE REMOVED, 27 LIN FT
51	53 LIN FT PIPE CULV CL A 1 15" @ 2.3% (TBF = 8 CY YD)
52	PRECAST FES 15" STA. 215+24, 26.0' LT INV = 874.35
53	PRECAST FES 15" STA. 215+23, 39.0' RT INV = 875.86



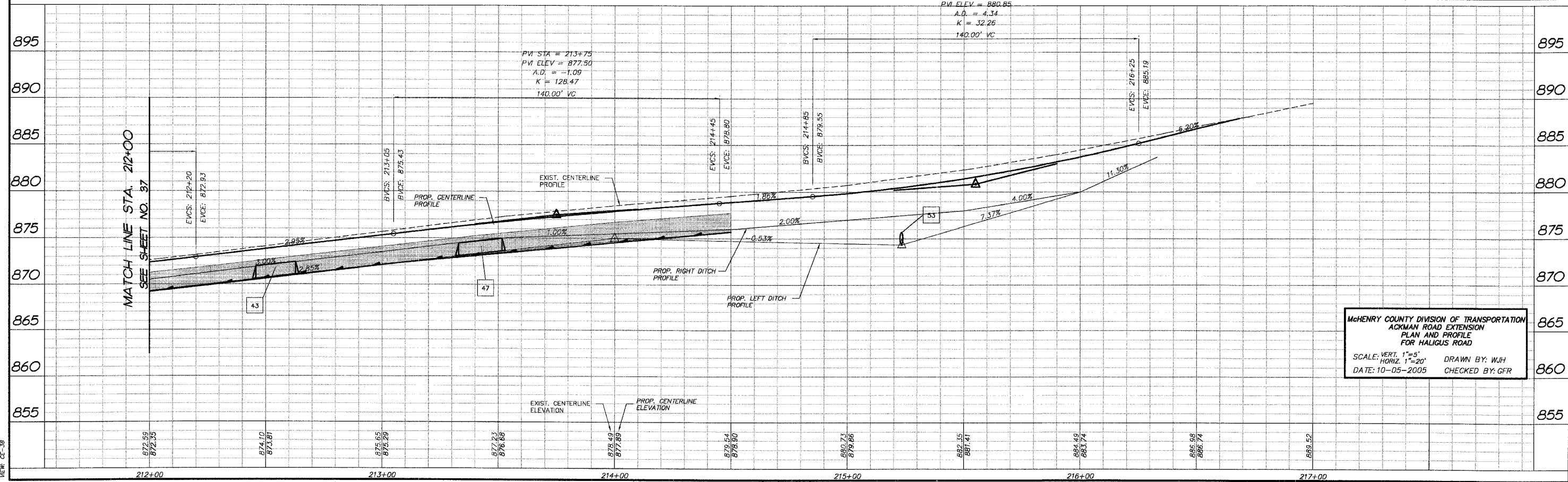
END HALIGUS ROAD IMPROVEMENTS STA. 216+68.28

PROJECT LEGEND:

- DENOTES PROPOSED BITUMINOUS PAVEMENT REMOVAL, (FULL DEPTH)
- DENOTES PROPOSED BITUMINOUS SURFACE REMOVAL 1 1/2" & BITUMINOUS RESURFACING
- DENOTES AREA OF TRENCH BACKFILL
- DENOTES PERIMETER EROSION BARRIER (SILT FENCE), INLET & PIPE PROTECTION AND DITCH CHECK
- DENOTES PROPOSED DRAINAGE DIRECTION ARROW
- DENOTES PROPOSED OVERFLOW DIRECTION ARROW
- DENOTES EXIST. TREES TO BE REMOVED GREATER THAN 6" DIA.
- DENOTES EXIST. TREES TO BE REMOVED LESS THAN 6" DIA.

Haligus Road

PVI STA = 215+55
PVI ELEV = 880.85
A.D. = 4.34
K = 32.26
140.00' VC



MCHENRY COUNTY DIVISION OF TRANSPORTATION
ACKMAN ROAD EXTENSION
PLAN AND PROFILE
FOR HALIGUS ROAD
SCALE: VERT. 1"=5'
HORIZ. 1"=20'
DATE: 10-05-2005
DRAWN BY: WJH
CHECKED BY: GFR

FINAL SURVEY PLOTTED	BY	DATE
NOTE BOOK		
TEMPLATE		
AREAS CHECKED		
NO.		

COMP. FILE: 030210-002A.dwg
VIEW: 02-38