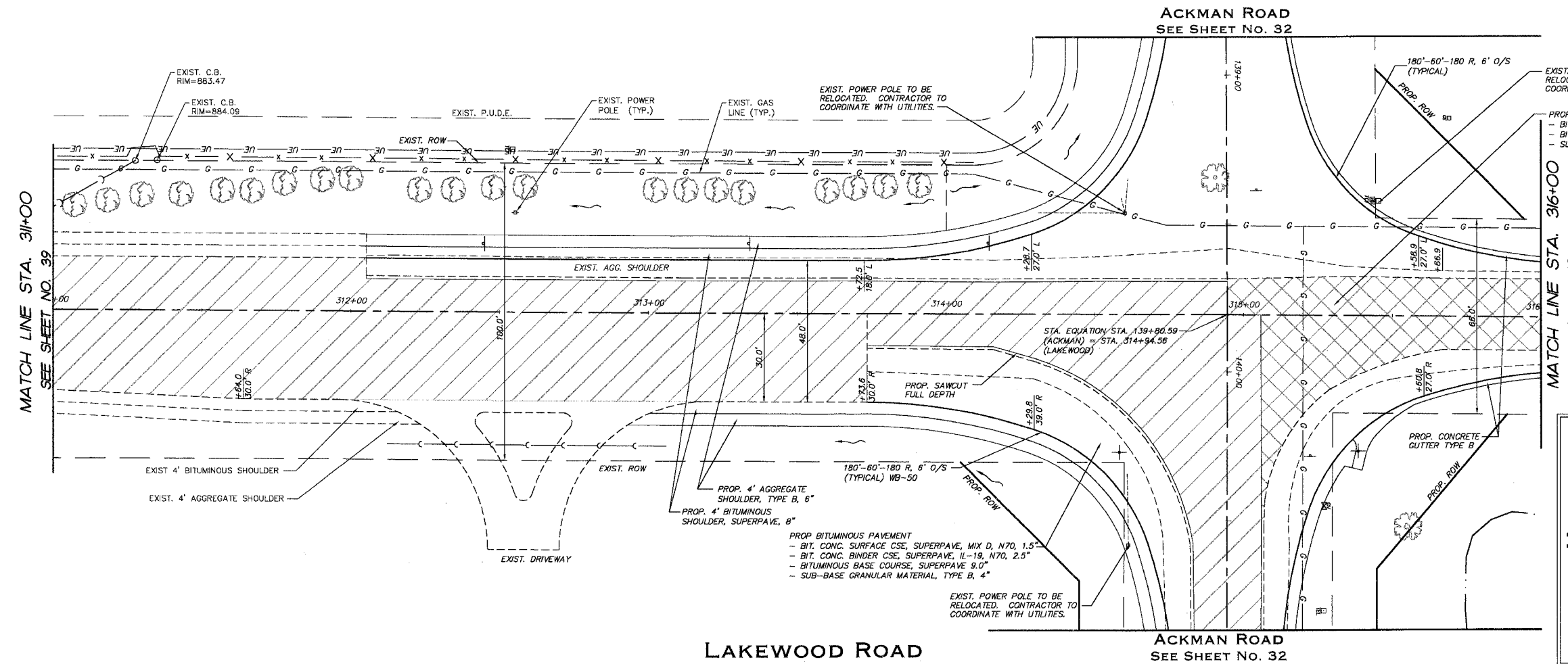


F.A.P. RTE.	SECTION	COUNTY	TOTAL SHEETS	SHEET NO.
3873	00.00243.00.FP	MCHENRY	84	40
	STA. 311+00	TO STA. 316+00		
FED. ROAD DIST. NO.	ILLINOIS HIGHWAY PROJECT 83840			



EXIST. UTILITY BOXES TO BE RELOCATED. CONTRACTOR TO COORDINATE WITH UTILITIES.

PROP. BITUMINOUS CONCRETE PAVEMENT (FULL DEPTH) SUPERPAVE, 13"
 - BIT. CONC. SURFACE CSE, SUPERPAVE, MIX D, N70, 2"
 - BIT. CONC. BINDER CSE, SUPERPAVE, IL-19, N70, 11"
 - SUB-BASE GRANULAR MATERIAL, TYPE B, 4"

LIMITS OF BITUMINOUS CONCRETE PAVEMENT (FULL DEPTH) SUPERPAVE, 13" ON LAKEWOOD ROAD IS STA 315+06 TO STA. 315+60. NORTH OF STA. 315+60 BITUMINOUS CONCRETE PAVEMENT (FULL DEPTH) SUPERPAVE, 10" SHALL BE CONSTRUCTED.

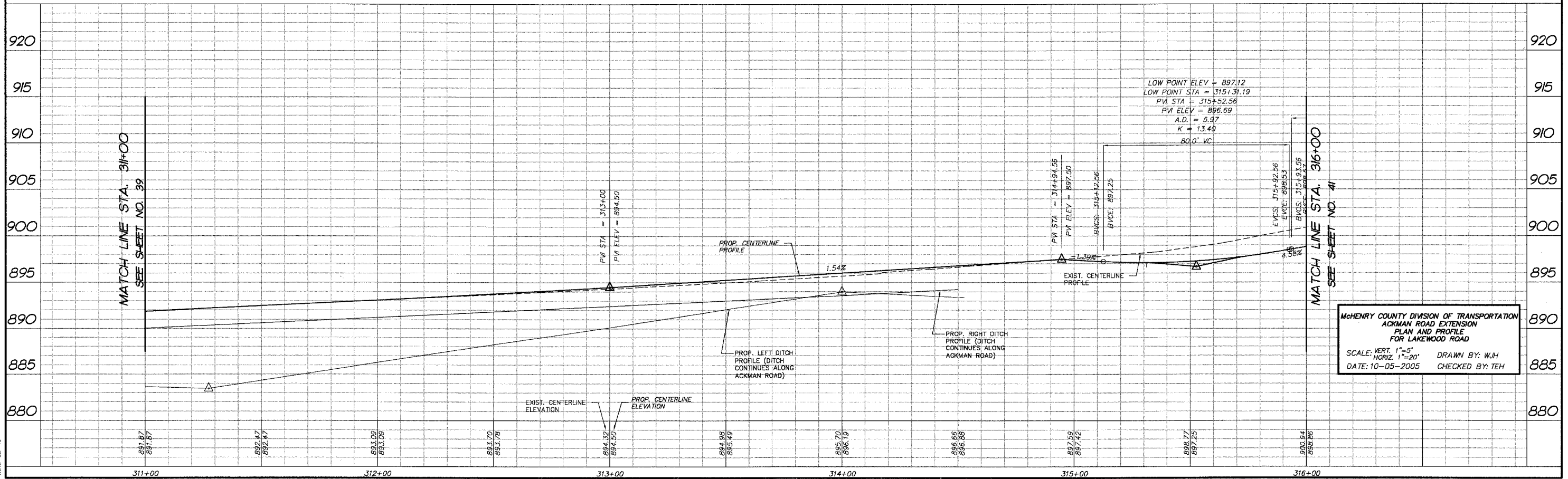
PROJECT LEGEND:

- DENOTES PROPOSED BITUMINOUS PAVEMENT REMOVAL, (FULL DEPTH)
- DENOTES PROPOSED BITUMINOUS SURFACE REMOVAL 1 1/2" & BITUMINOUS RESURFACING
- DENOTES AREA OF TRENCH BACKFILL
- DENOTES PERIMETER EROSION BARRIER (SILT FENCE), INLET & PIPE PROTECTION AND DITCH CHECK
- DENOTES PROPOSED DRAINAGE DIRECTION ARROW
- DENOTES PROPOSED OVERFLOW DIRECTION ARROW
- DENOTES EXIST. TREES TO BE REMOVED GREATER THAN 6" DIA.
- DENOTES EXIST. TREES TO BE REMOVED LESS THAN 6" DIA.

FINAL SURVEY	BY	DATE
SURVEY PLOTTED		
NOTE BOOK		
TEMPLATE AREAS CHECKED		
NO.		

LAKWOOD ROAD
SEE SHEET NO. 32

ACKMAN ROAD
SEE SHEET NO. 32



McHENRY COUNTY DIVISION OF TRANSPORTATION
 ACKMAN ROAD EXTENSION
 PLAN AND PROFILE
 FOR LAKEWOOD ROAD

SCALE: VERT. 1"=5'
 HORIZ. 1"=20'

DATE: 10-05-2005
 DRAWN BY: WJH
 CHECKED BY: TEH

COMP. FILE: 030210-602.dwg
 PLOT FILE: CE-40
 ME: WJH