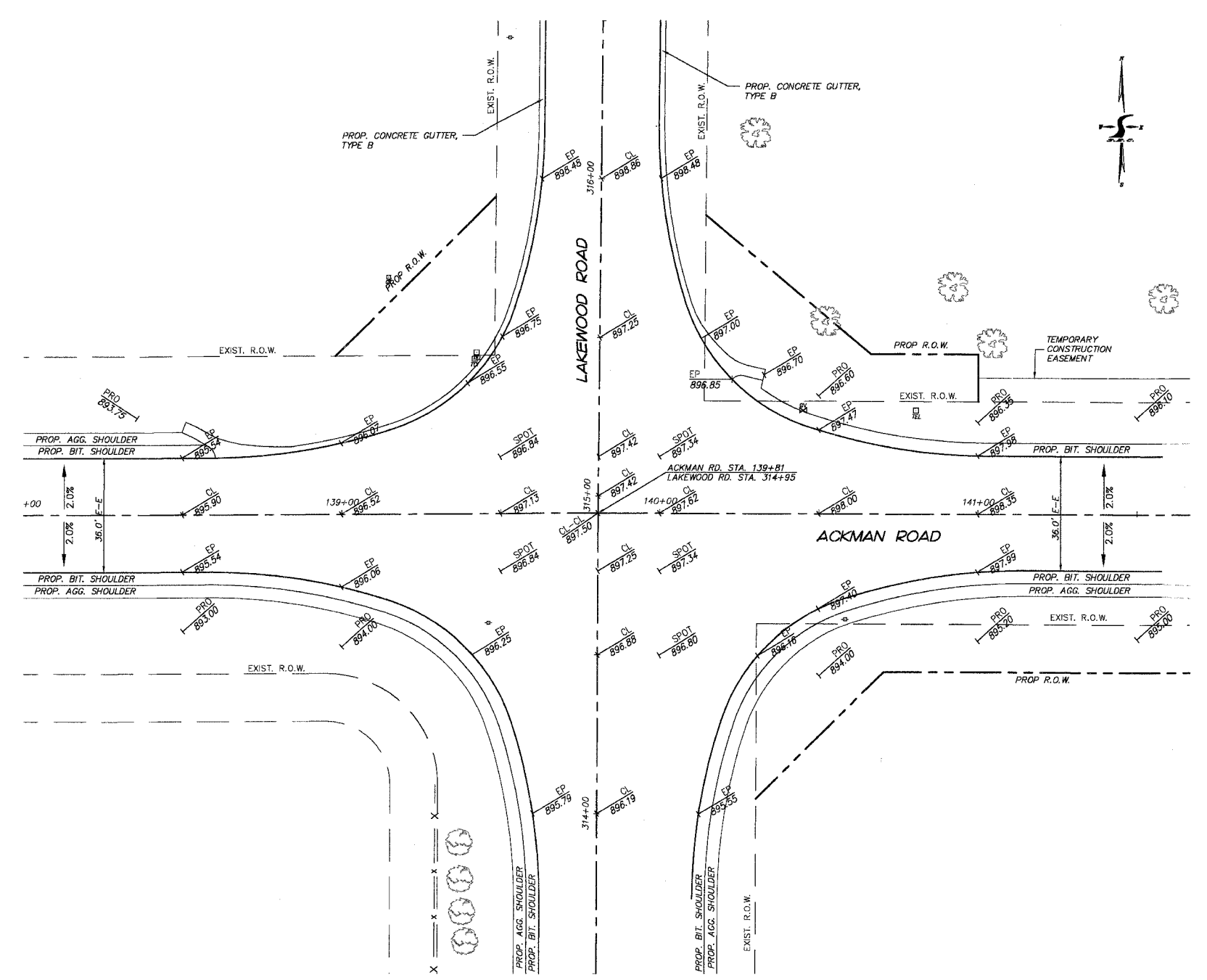
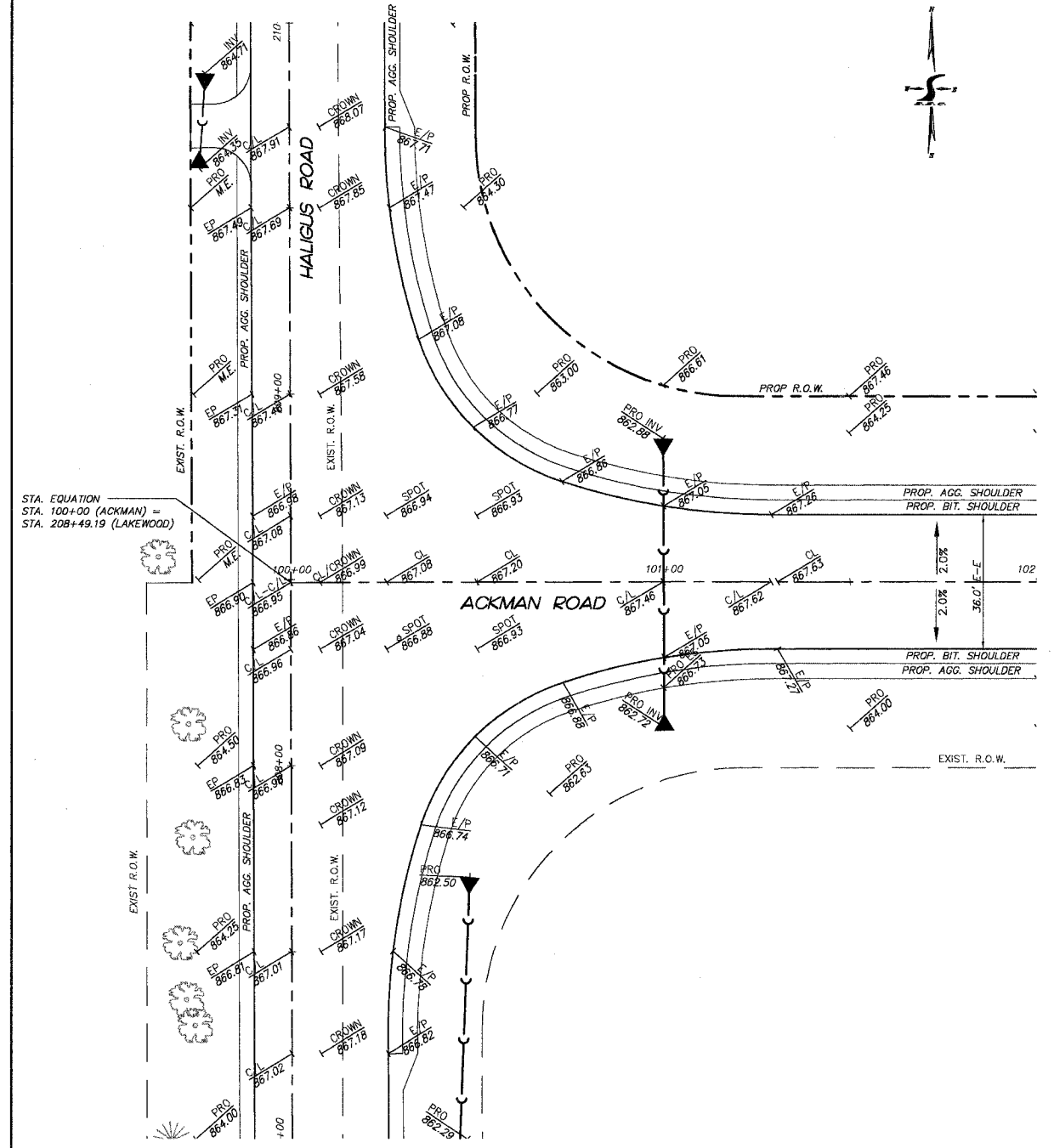


F.A.U. RTE.	SECTION	COUNTY	TOTAL SHEETS	SHEET NO.
336	00-0062-00-CH	MCHENRY	84	43
STA.		TO STA.		
FED. ROAD DIST. NO. 1		ILLINOIS HIGHWAY PROJECT		
83840				



PLOT FILE: STANDARD
 DATE: 05-04-05
 COMP. FILE: 030210-812.dwg

REVISIONS	
NO.	DATE
7.	
6.	
5.	
4.	
3.	
2.	
1.	

SMITH ENGINEERING CONSULTANTS, INC.
 CIVIL/STRUCTURAL ENGINEERS AND SURVEYORS
 4000 PRIME PARKWAY, SUITE 201
 MCHENRY, ILLINOIS 60050
 PH: 815-385-1778 FAX: 815-385-1781
 www.smithengineering.com E-MAIL: sec@smithengineering.com
 MCHENRY BURLYLE YORKVILLE
 ILLINOIS PROFESSIONAL DESIGN FIRM # 184-000108

McHENRY COUNTY DIVISION OF TRANSPORTATION
 ACKMAN ROAD EXTENSION
 INTERSECTION PAVEMENT
 ELEVATION PLAN

SCALE: 1"=20'
 DATE 10-05-2005
 DRAWN BY WJH
 CHECKED BY GFR