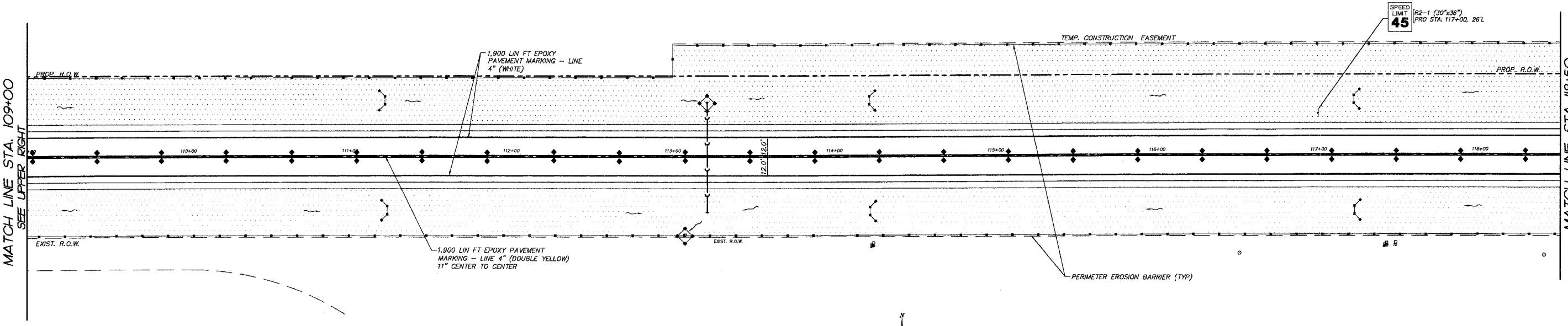
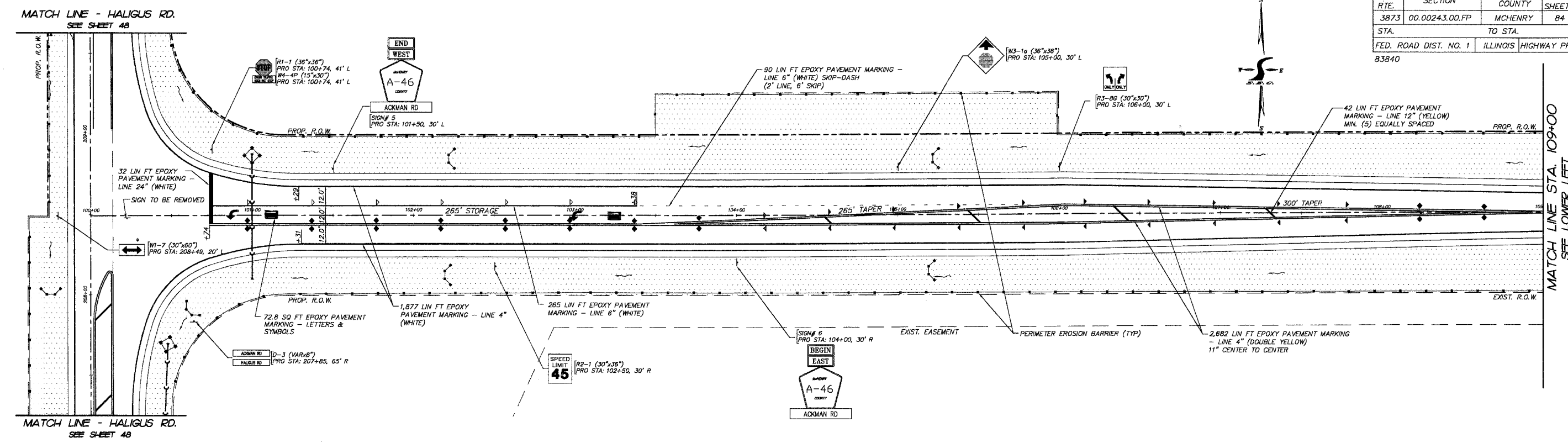


F.A.U. R.T.E.	SECTION	COUNTY	TOTAL SHEETS	SHEET NO.
3873	00.00243.00.FP	MCHENRY	84	45
STA.	TO STA.			
FED. ROAD DIST. NO. 1	ILLINOIS	HIGHWAY PROJECT	83840	



PLOT FILE: STANDARD
 VIEW: CE-45
 COMP. FILE: 030210-StrappingPlan.dwg

REVISIONS	
NO.	DATE
7.	
6.	
5.	
4.	
3.	
2.	
1.	

SMITH ENGINEERING CONSULTANTS, INC.
 CIVIL/STRUCTURAL ENGINEERS AND SURVEYORS
 4800 PRIME PARKWAY, SUITE 201
 MCHENRY, ILLINOIS 60050
 PH: 815-385-1776 FAX: 815-385-1781
 www.smithengineering.com E-MAIL: seo@smithengineering.com
 MCHENRY HUNTLEY YORKVILLE
 ILLINOIS PROFESSIONAL DESIGN FIRM # 164-000108

McHENRY COUNTY DIVISION OF TRANSPORTATION
ACKMAN ROAD EXTENSION
PAVEMENT MARKING, SIGNING, EROSION
CONTROL AND RESTORATION PLAN
STA. 100+00 TO STA. 118+50

SCALE: 1"=30'
 DATE 10-05-2005
 DRAWN BY MDJ
 CHECKED BY TEH