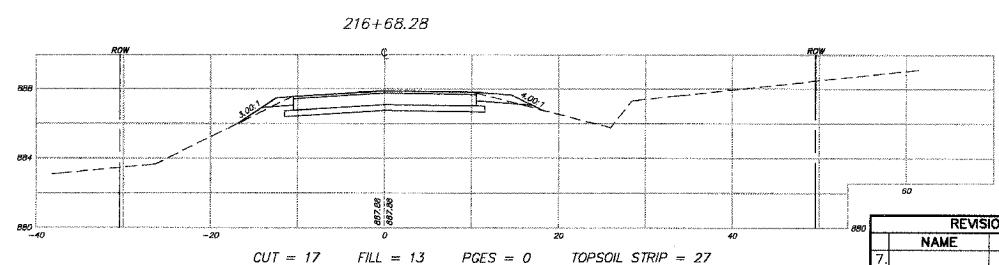
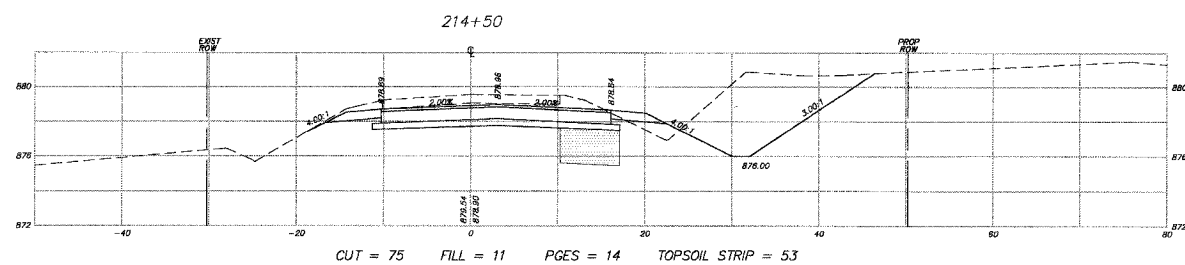
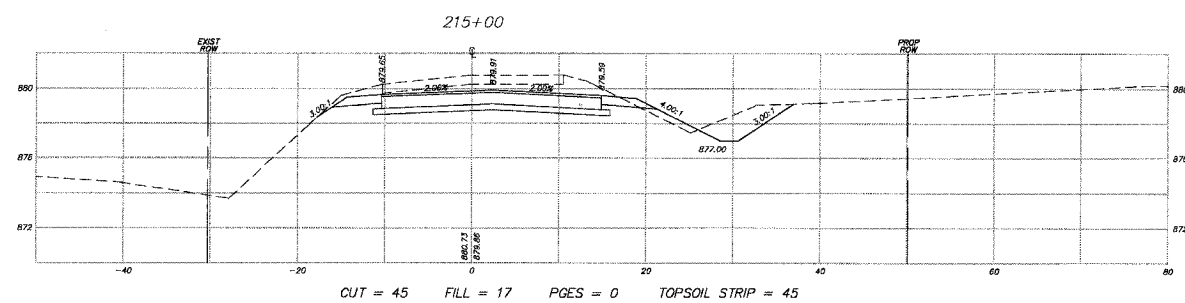
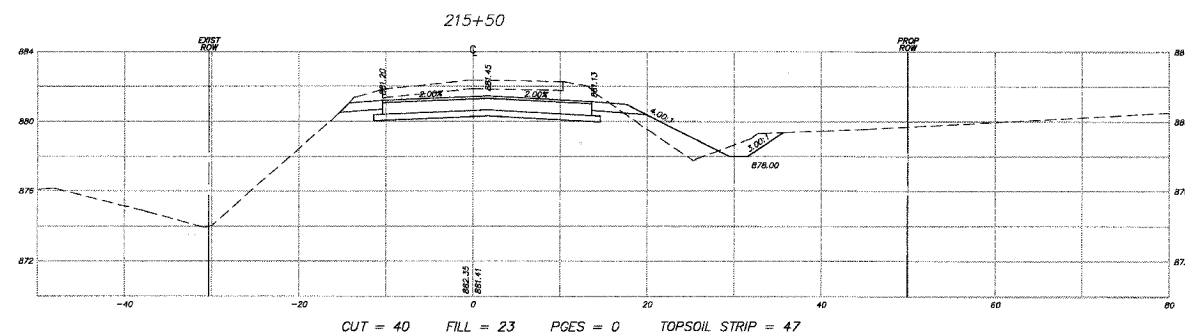
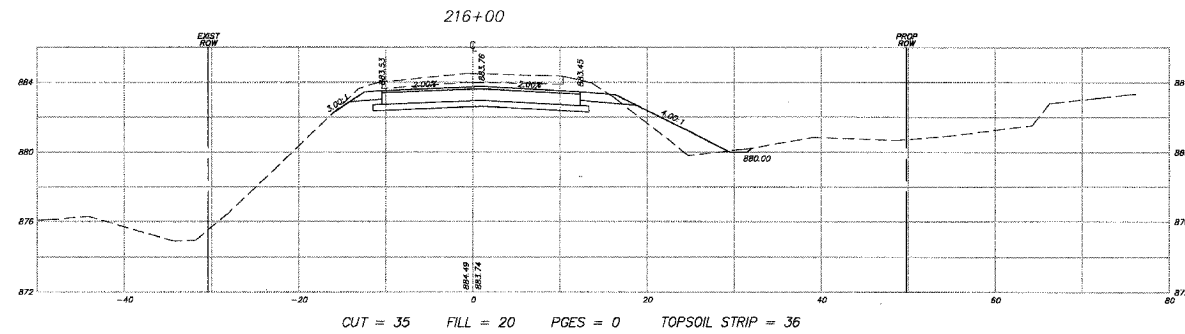
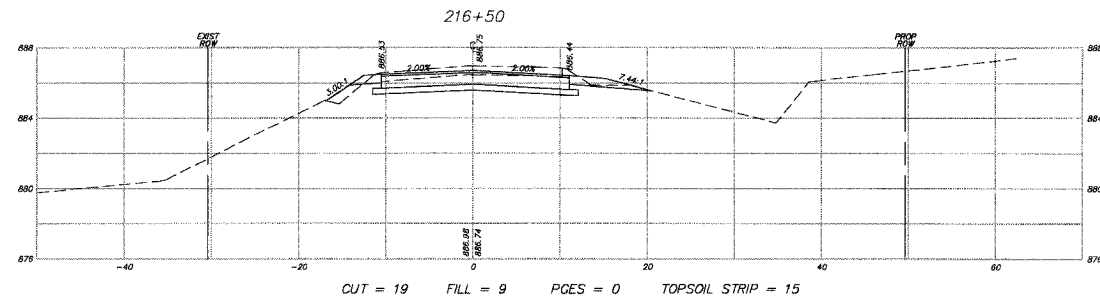
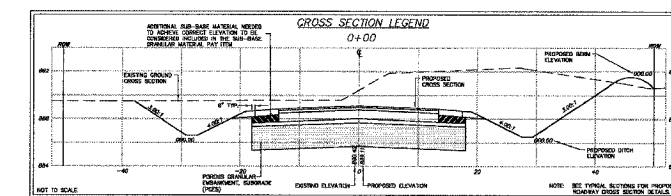


F.A.U. RTE.	SECTION	COUNTY	TOTAL SHEETS	SHEET NO.
3873	00-00243-00-FP	MCHENRY	84	79
STA.	214+50	TO STA.	216+68.28	
FED. ROAD DIST. NO. 1	ILLINOIS HIGHWAY PROJECT		83840	



NOTE:
SEE EARTHWORK TABLE FOR A
SUMMARY OF THE CUTS AND FILLS.



REVISIONS	
NAME	DATE
7.	
6.	
5.	
4.	
3.	
2.	
1.	

SMITH ENGINEERING CONSULTANTS, INC.
 CIVIL/STRUCTURAL ENGINEERS AND SURVEYORS
 4500 PRIME PARKWAY, SUITE 201
 MCHENRY, ILLINOIS 60050
 PH: 815-385-1776 FAX: 815-385-1781
 www.smithengineering.com E-MAIL: sec@smithengineering.com
 * MCHENRY * HUNTLEY * YORKVILLE
 ILLINOIS PROFESSIONAL DESIGN FIRM # 184-000108

MCHENRY COUNTY DIVISION OF TRANSPORTATION
ACKMAN ROAD EXTENSION

CROSS SECTIONS FOR HALIGUS RD

SCALE: H:1"=10', V:1"=5'
 DATE 04-16-04
 DRAWN BY CJP
 CHECKED BY TEH

PLOT FILE: X
 COMP. FILE: 0:021:0secshALIGUS.dwg