

FED. AID DIST. NO.	SECTION	COUNTY	TOTAL SHEETS	SHEET NO.
1585	02-00079-00-LT	COOK	9	1
STA.	TO STA.			
FED. ROAD DIST. NO. ILLINOIS FED. AID PROJECT				

STATE OF ILLINOIS
DEPARTMENT OF TRANSPORTATION
DIVISION OF HIGHWAYS

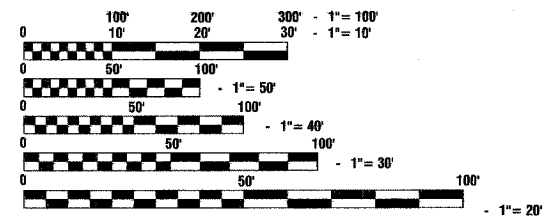
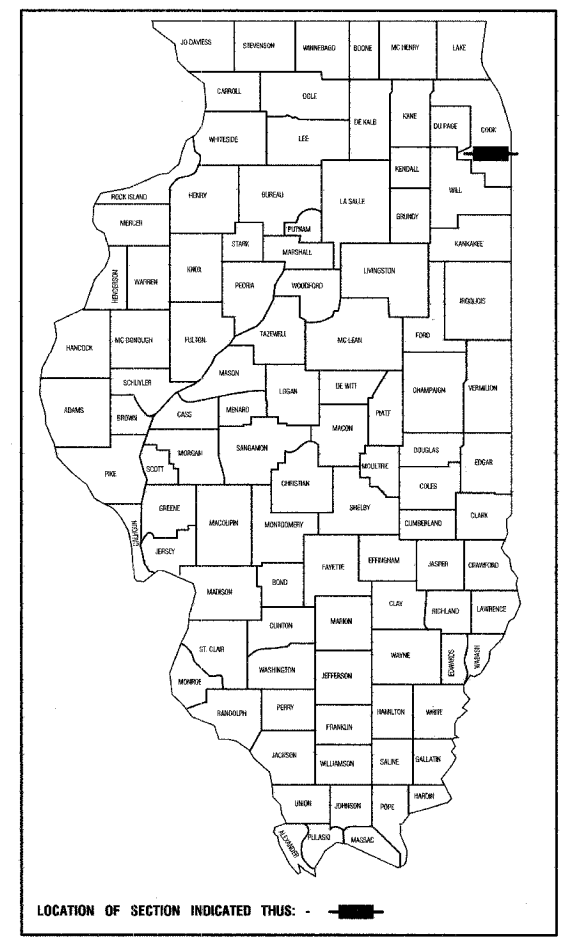
PLANS FOR PROPOSED FEDERAL AID HIGHWAY

- INDEX OF SHEETS**
1. COVER SHEET
 2. SUMMARY OF QUANTITIES
 - 3-4. PLAN SHEETS
 5. SINGLE LINE DIAGRAM
 - 6-9. CONSTRUCTION DETAILS

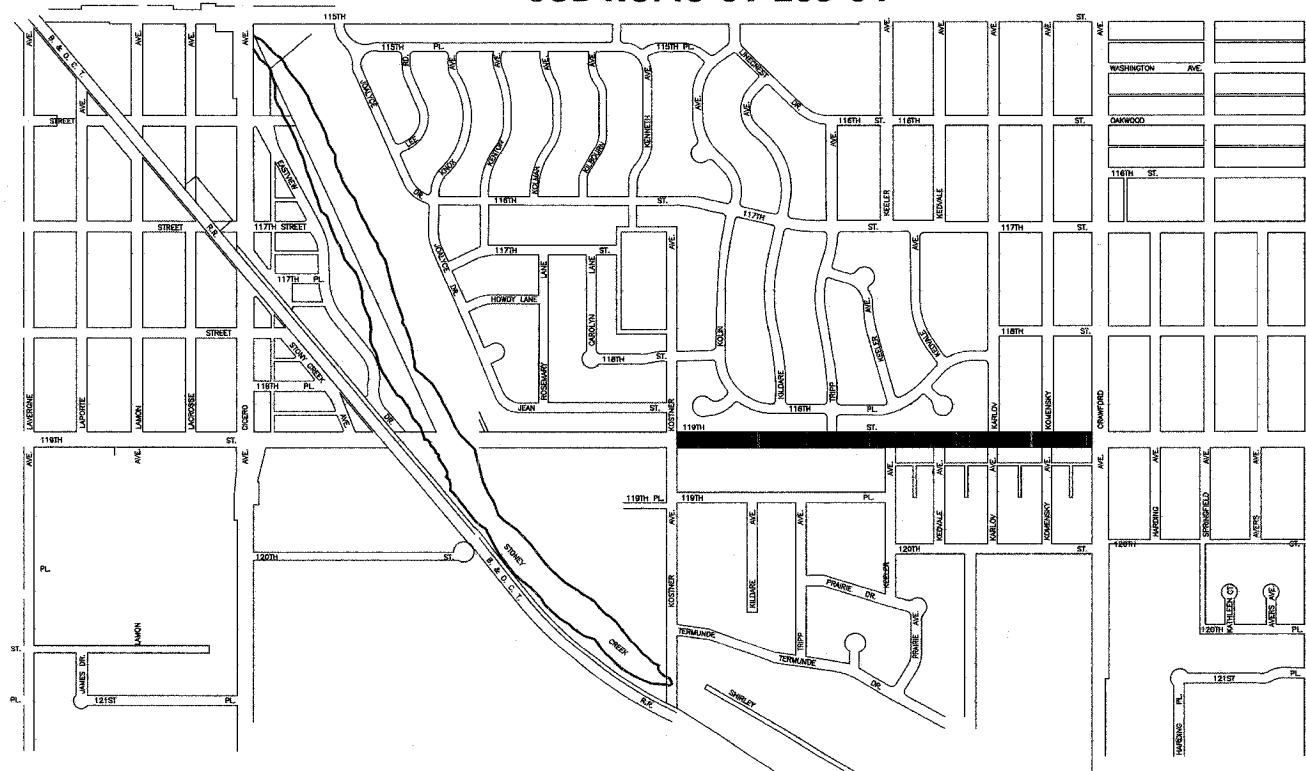
- STATE STANDARDS**
- 000001-04 Standard Symbols, Abbreviations and Patterns
 - 701501-03 Lane Closure, 2L 2W, Day Or Night Operations, For Speeds < 45 MPH
 - 701606-04 Lane Closure, Multilane, 2W, With Mountable Median, For Speeds < 45 MPH
 - 701701-04 Lane Closure, Multilane, Intersection, For Speeds < 45 MPH
 - 701801-03 Lane Closure, Multilane, 1W Or 2W, Crosswalk or Sidewalk Closure, For Speeds < 45 MPH

LOCATED IN THE VILLAGE OF:
ALSIP, ILLINOIS

SCALES { PLAN - 1"=50'
 CONSTRUCTION DETAILS - 1"=1'
**F.A.U. ROUTE 1585 (119TH STREET)
 KOSTNER AVENUE TO PULASKI AVENUE
 STREET LIGHTING
 PROJECT NO.:M-8003 (410)
 SECTION NO.: 02-00079-00-LT
 VILLAGE OF ALSIP
 COOK COUNTY
 JOB NO. :C-91-203-04**



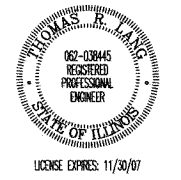
FULL SIZE PLANS HAVE BEEN PREPARED USING STANDARD ENGINEERING SCALES, REDUCED SIZED PLANS WILL NOT CONFORM TO STANDARD SCALES, IN MAKING MEASUREMENTS ON REDUCED PLANS, THE ABOVE SCALES MAY BE USED.



LOCATION MAP
SECTION 22, TOWNSHIP 37, RANGE 13
GROSS LENGTH=2,185 FEET=0.42 MILES
NET LENGTH=2,185 FEET=0.42 MILES

PREPARED BY OR UNDER THE DIRECT SUPERVISION OF:

Thomas R. J. [Signature]
2/6/06




STATE OF ILLINOIS
DEPARTMENT OF TRANSPORTATION

APPROVED 2/6 2006
Robert E. Ritzberg LOCAL AGENCY OFFICIAL

PASSED FEBRUARY 9 2006
[Signature] BUREAU CHIEF OF LOCAL ROADS & STREETS

PASSED FEB 10 2006
Diane M. O'Keefe DEPUTY DIRECTOR OF HIGHWAYS, REGION ENGINEER

I.D.O.T. FEDERAL AID COORDINATOR: PHIL MARCYN 847-705-4189



JOINT
UTILITY
LOCATING
INFORMATION FOR
EXCAVATORS

Call 48 hours before you dig
(EXCLUDING SAT., SUN. & HOL.)